

HANNEY & ASSOCIATES, ARCHITECTS  
1726 South Hillside, Wichita, Kansas, 67211  
Phone (316) 883-8965  
Fax (316) 884-1441  
www.haarchitects.com

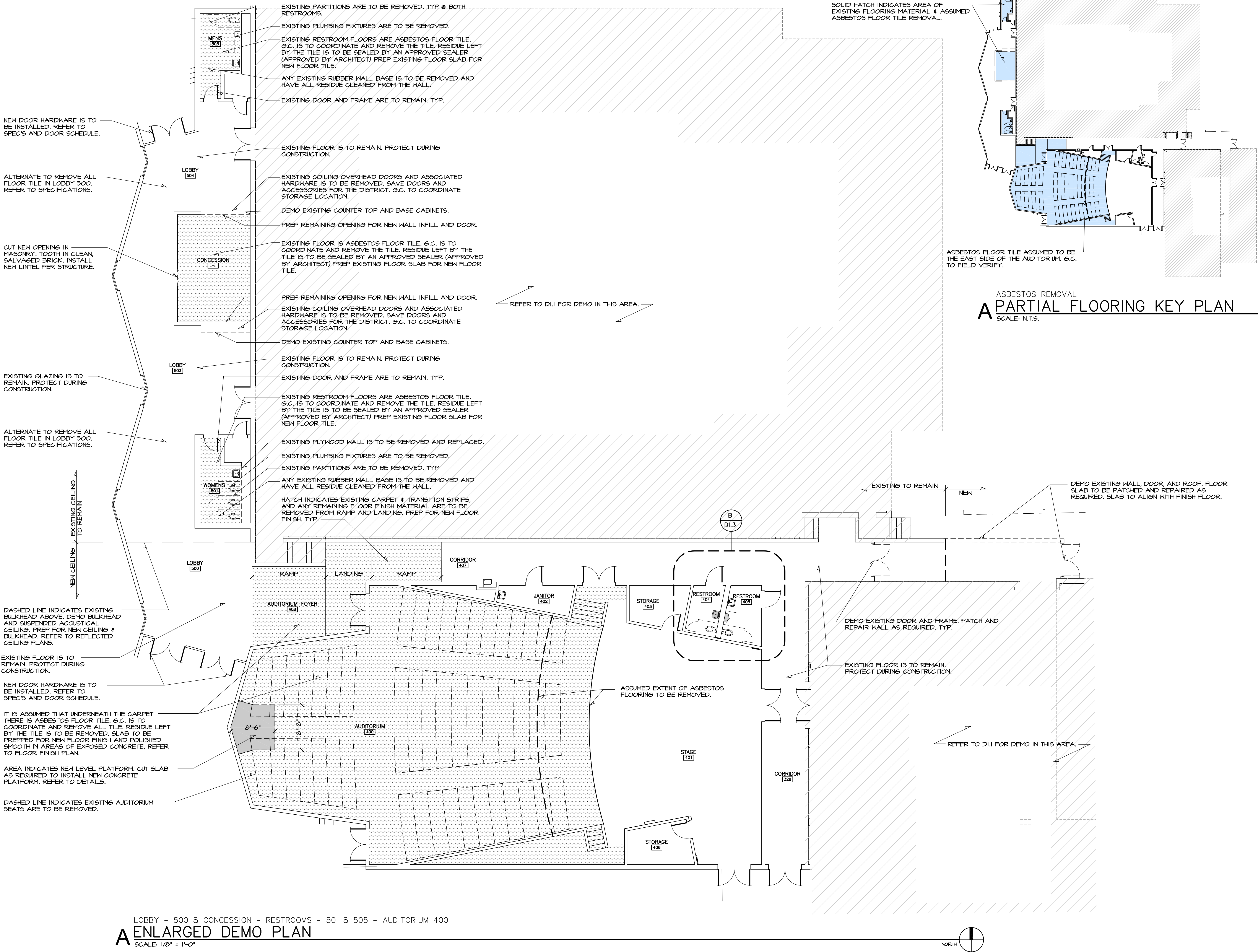
2019  
OXFORD JUNIOR/SENIOR HIGH SCHOOL  
UNIFIED SCHOOL DISTRICT #358  
515 N Water St, Oxford, KS 67119

DRAWINGS ISSUED		
NO.	DATE	ITEM ISSUED
7	12/20/19	ISSUED FOR BIDS
6	12/16/19	44% BOARD REVIEW
5	12/13/19	44% SUBMITTAL
4	11/20/19	50% REVIEW
3	6/10/19	DESIGN DEVELOPMENT
2	5/13/19	SCHEMATIC DESIGN
1	4/8/19	SCHEMATIC DESIGN

COMPUTER DRAWING  
358\_ELEM\_A401

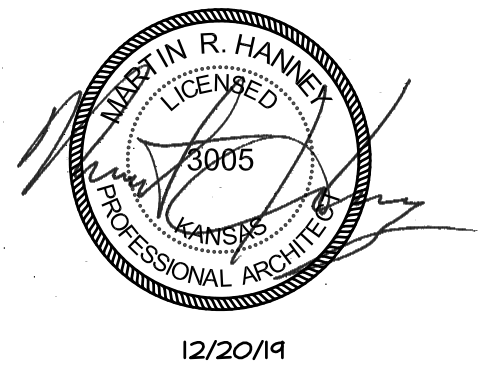
DATE: AUGUST, 2019  
DRAWN BY: MH, CH, MB, JC  
CHECKED BY: MRH

SHEET  
D1.2  
OF 1 SHEETS



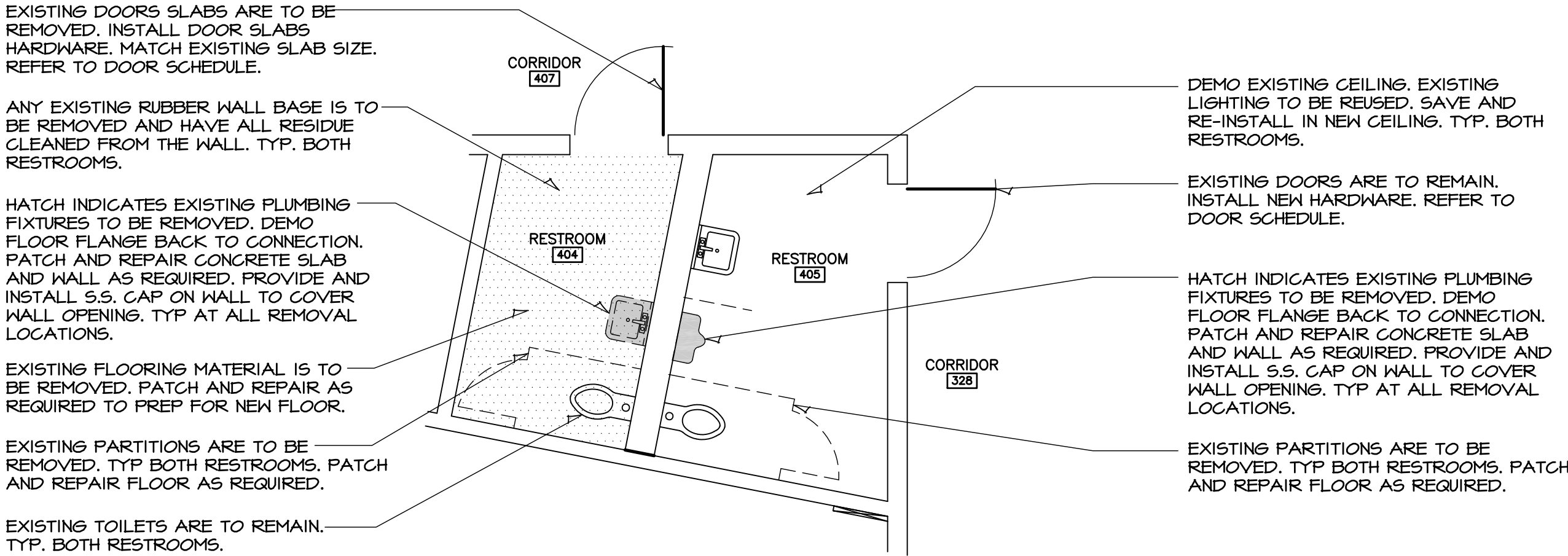
LOBBY - 500 & CONCESSION - RESTROOMS - 501 & 505 - AUDITORIUM 400  
A ENLARGED DEMO PLAN  
SCALE: 1/8" = 1'-0"



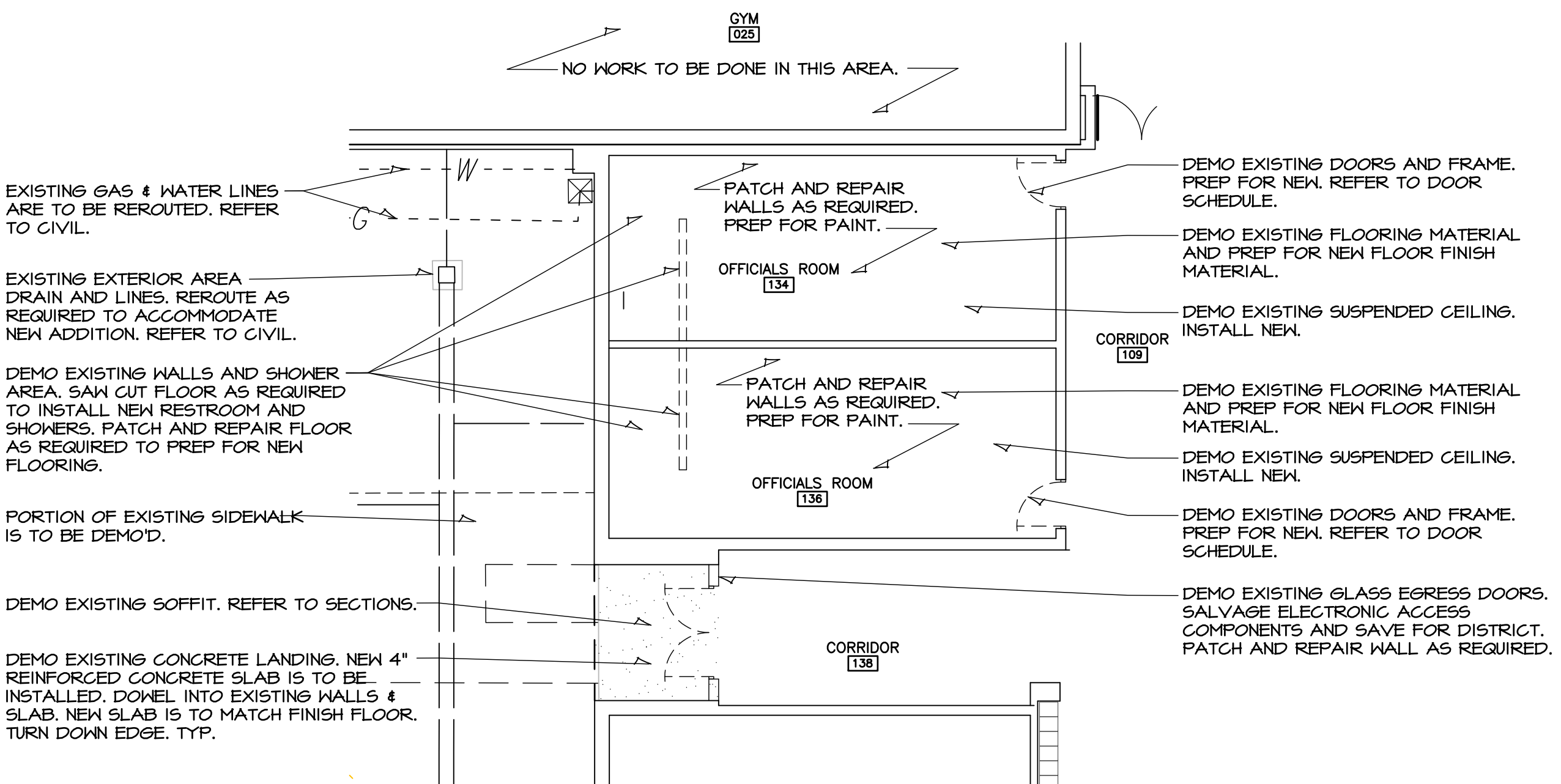


HANNEY & ASSOCIATES, ARCHITECTS  
1726 South Hillside, Wichita, Kansas, 67211  
Phone (316) 883-8965  
Fax (316) 884-1441  
www.haarchitects.com

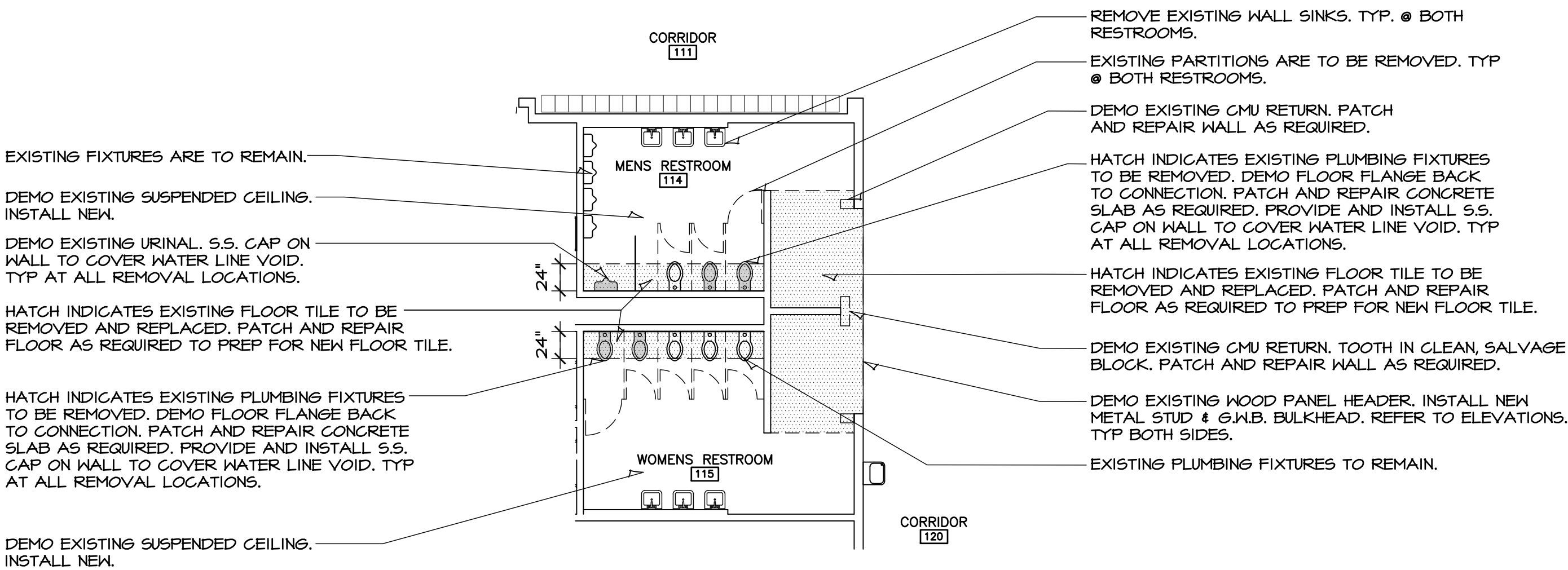
2019  
OXFORD JUNIOR/SENIOR HIGH SCHOOL  
UNIFIED SCHOOL DISTRICT #358  
515 N Water St, Oxford, KS 67119



RESTROOM 404 & 405  
**A ENLARGED DEMO PLAN**  
SCALE: 1/4" = 1'-0"



COURTYARD  
OFFICIALS ROOM - BASE BID - DEMO  
**B ENLARGED DEMO PLAN**  
SCALE: 1/8" = 1'-0"



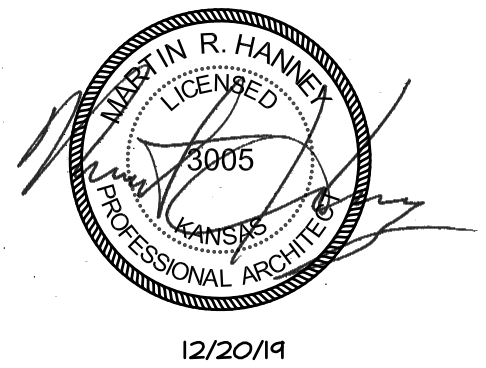
RESTROOMS - 114 & 115  
**C ENLARGED DEMO PLAN**  
SCALE: 1/8" = 1'-0"

DRAWINGS ISSUED		
NO.	DATE	ITEM ISSUED
7	12/20/19	ISSUED FOR BIDS
6	12/16/19	99% BOARD REVIEW
5	12/13/19	99% SUBMITTAL
4	9/20/19	50% REVIEW
3	6/10/19	DESIGN DEVELOPMENT
2	5/13/19	SCHEMATIC DESIGN
1	4/8/19	SCHEMATIC DESIGN

**COMPUTER DRAWING**

DATE: AUGUST, 2019	
DRAWN BY: MH, CH, MB, JC	CHECKED BY: MRH





HANVEY & ASSOCIATES, ARCHITECTS  
1726 South Hillside, Wichita, Kansas, 67211  
Phone (316) 883-8965  
Fax (316) 884-1441  
www.haarchitects.com

2019  
OXFORD JUNIOR/SENIOR HIGH SCHOOL  
UNIFIED SCHOOL DISTRICT #358  
515 N Water St, Oxford, KS 67119

DRAWINGS ISSUED		
NO.	DATE	ITEM ISSUED
1	4/8/14	SCHEMATIC DESIGN
2	5/13/14	SCHEMATIC DESIGN
3	6/10/14	DESIGN DEVELOPMENT
4	9/20/14	50% REVIEW
5	12/13/14	44% SUBMITTAL
6	12/16/14	44% BOARD REVIEW
7	12/20/14	ISSUED FOR BIDS

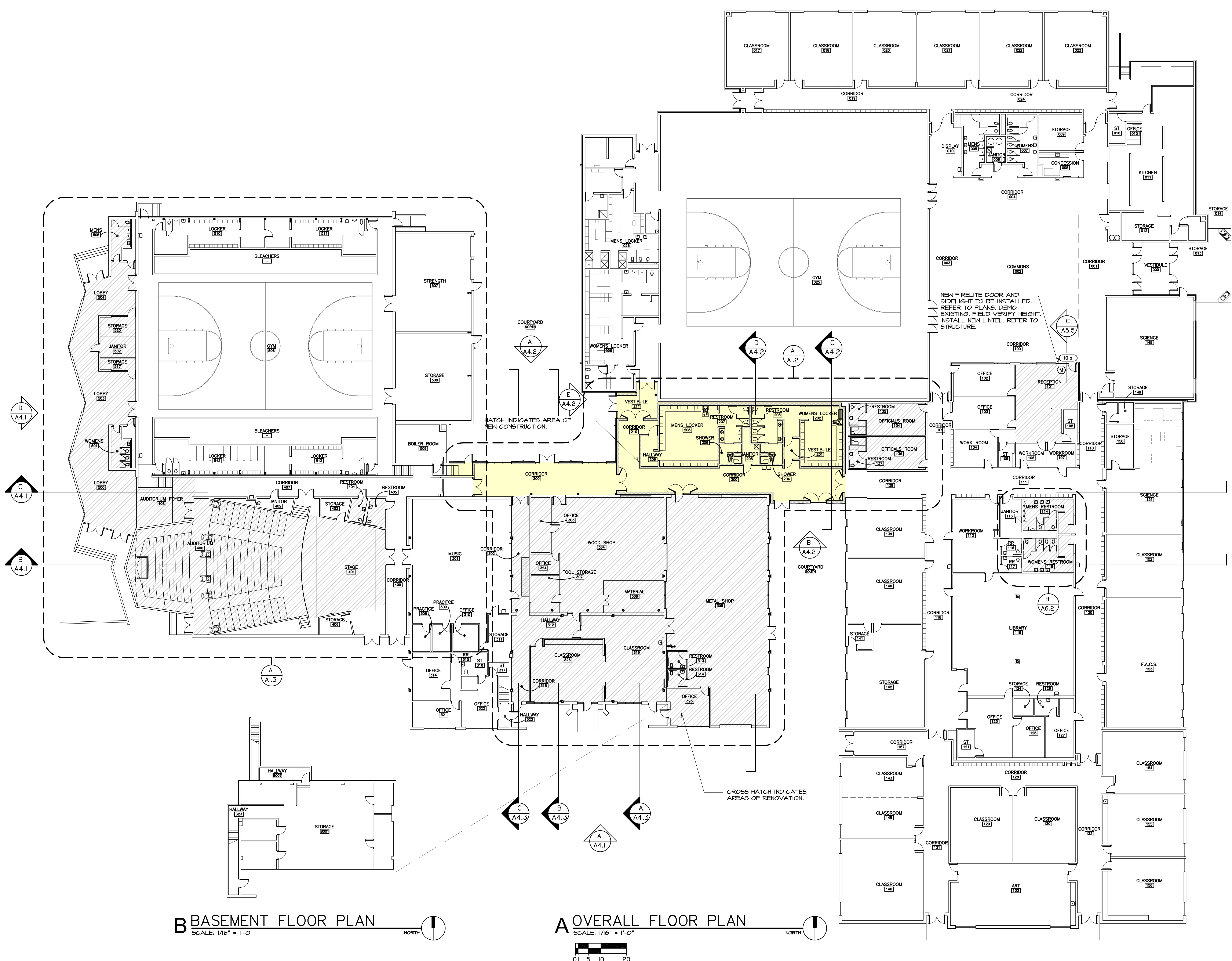
COMPUTER DRAWING  
358\_ELEM\_A401

DATE: AUGUST, 2014  
DRAWN BY: MH, CH, MB, JC  
CHECKED BY: MRH

SHEET

A1.1

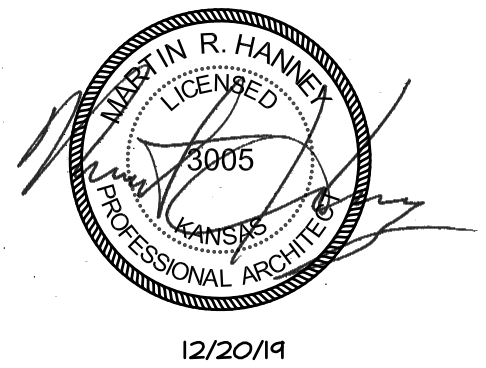
OF 1 SHEETS



**B** BASEMENT FLOOR PLAN  
SCALE: 1/16" = 1'-0"

**A** OVERALL FLOOR PLAN  
SCALE: 1/16" = 1'-0"





HANNEY & ASSOCIATES, ARCHITECTS  
1726 South Hillside, Wichita, Kansas, 67211  
Phone (316) 883-8985  
Fax (316) 884-1441  
www.haarchitects.com

# 2019

## OXFORD JUNIOR/SENIOR HIGH SCHOOL

### UNIFIED SCHOOL DISTRICT #358

515 N Water St, Oxford, KS 67119

DRAWINGS ISSUED		
NO.	DATE	ITEM ISSUED
1	4/8/14	SCHEMATIC DESIGN
2	5/13/14	SCHEMATIC DESIGN
3	6/10/14	DESIGN DEVELOPMENT
4	9/20/14	50% REVIEW
5	12/13/14	99% SUBMITTAL
6	12/16/14	99% BOARD REVIEW
7	12/20/14	ISSUED FOR BIDS

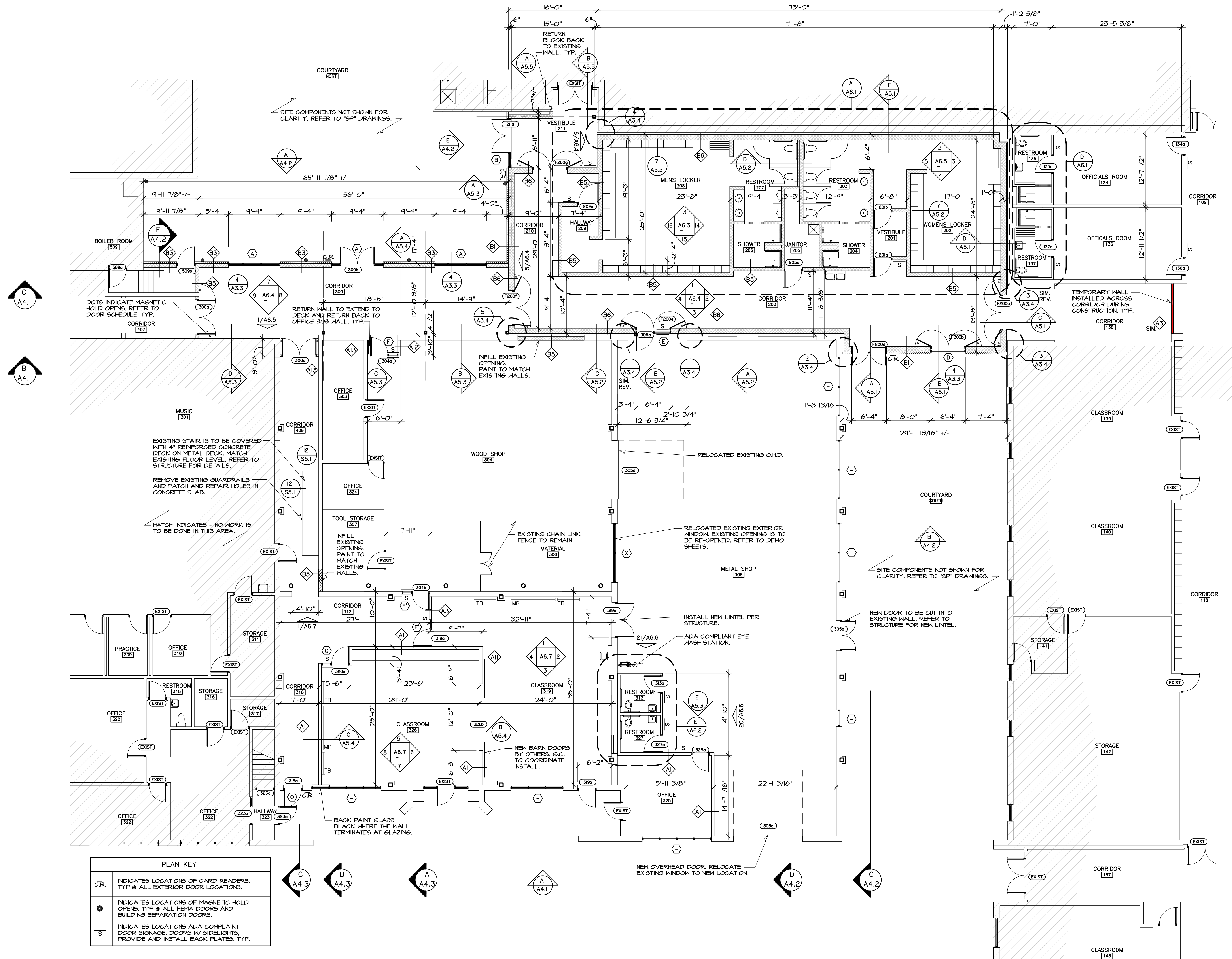
COMPUTER DRAWING  
358\_ELEM\_A401

DATE: AUGUST, 2019  
DRAWN BY: MRH  
CHECKED BY: MRH

SHEET

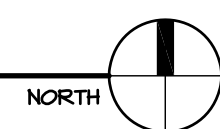
# A1.2

OF 1 SHEETS

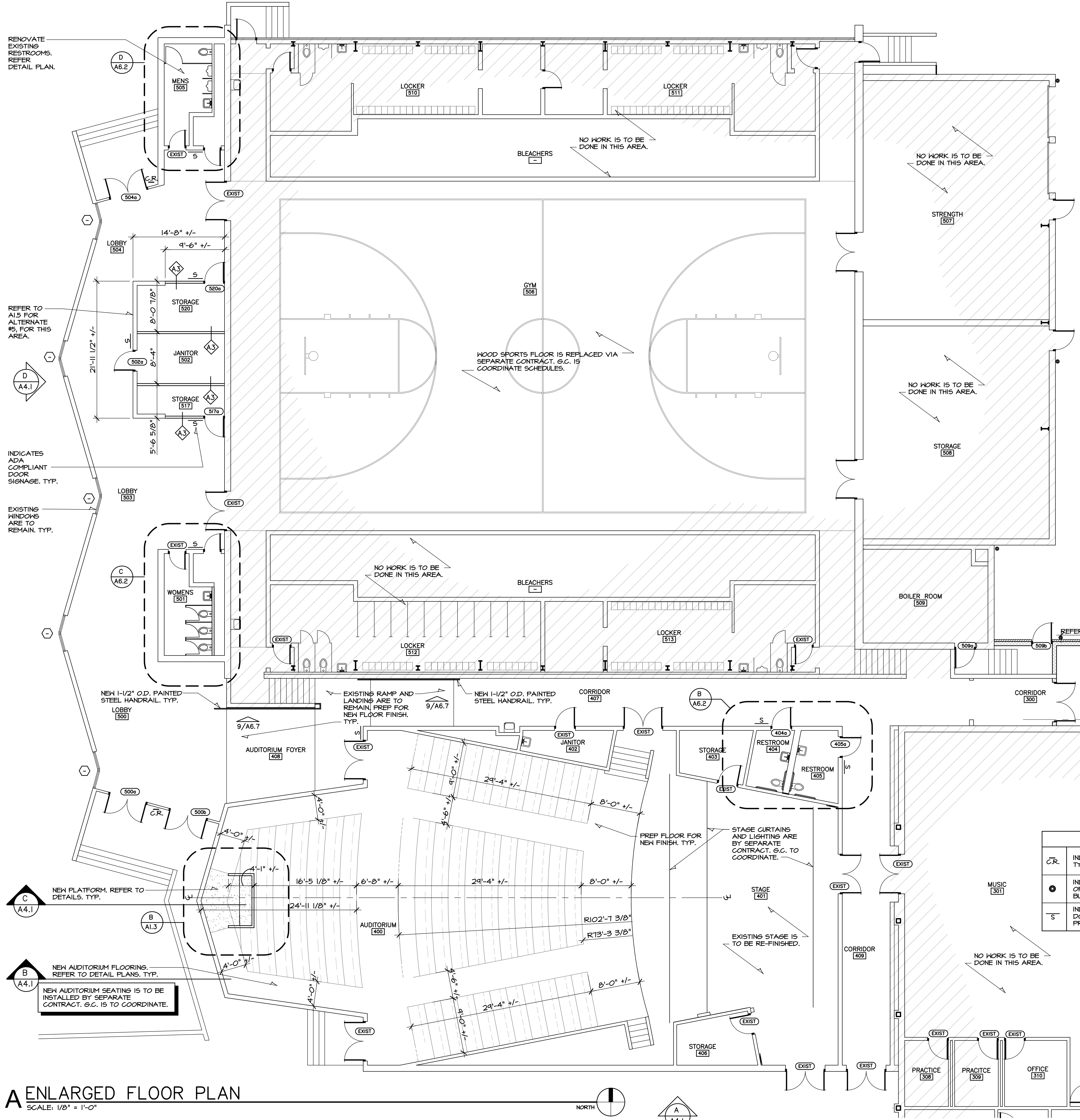


PLAN KEY	
C.R.	INDICATES LOCATIONS OF CARD READERS. TYP. @ ALL EXTERIOR DOOR LOCATIONS.
●	INDICATES LOCATIONS OF MAGNETIC HOLD OPENS. TYP. @ ALL FEMA DOORS AND BUILDING SEPARATION DOORS.
S	INDICATES LOCATIONS ADA COMPLAINT DOOR SIGNAGE. DOORS W/ SIDELIGHTS, PROVIDE AND INSTALL BACK PLATES. TYP.

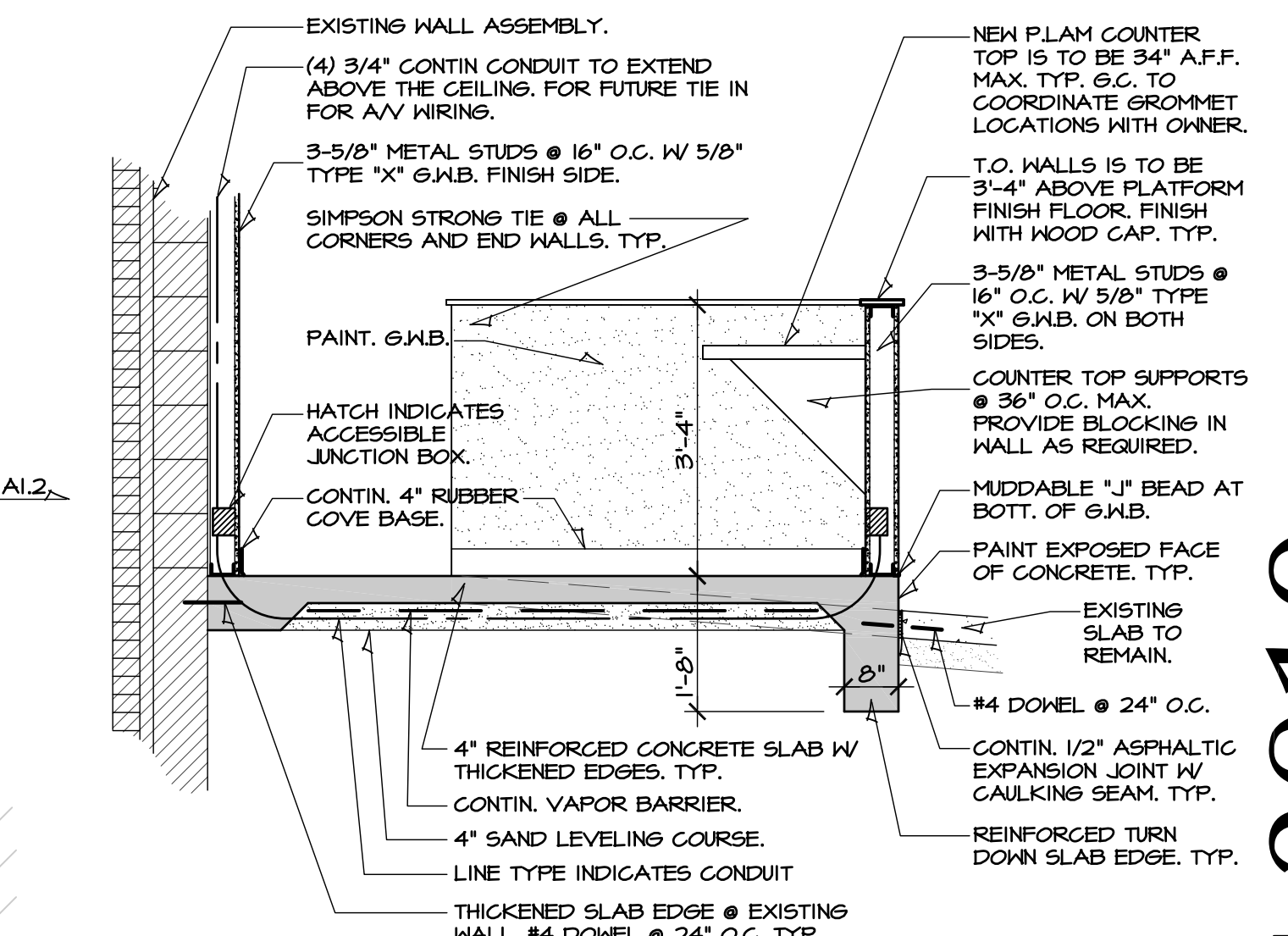
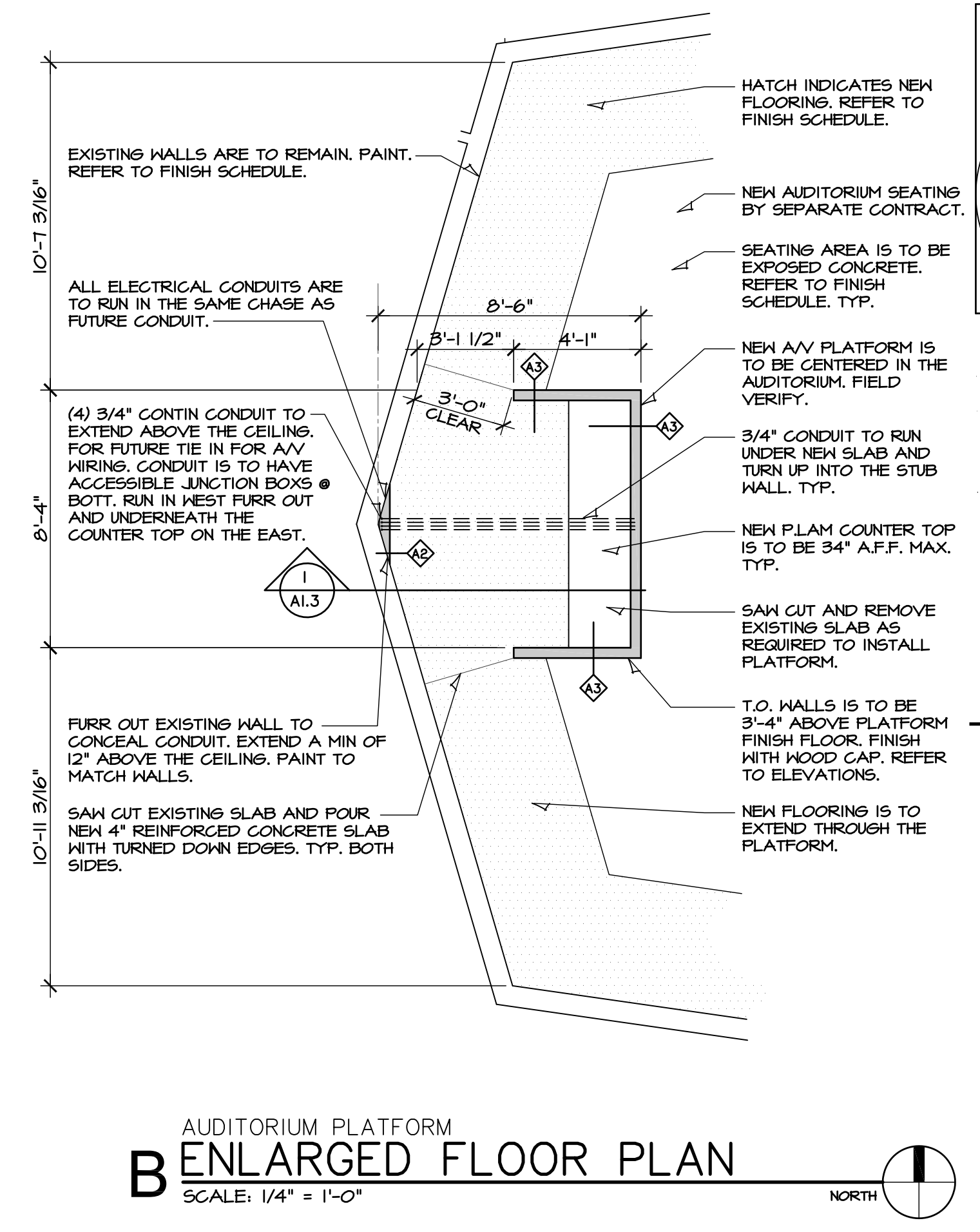
ENLARGED FLOOR PLAN  
SCALE: 1/8" = 1'-0"







**A ENLARGED FLOOR PLAN**  
SCALE: 1/8" = 1'-0"



**1 SECTION**  
SCALE: 1/2" = 1'-0"

PLAN KEY	
C.R.	INDICATES LOCATIONS OF CARD READERS. TYP. ● ALL EXTERIOR DOOR LOCATIONS.
●	INDICATES LOCATIONS OF MAGNETIC HOLD OPENS. TYP. ● ALL FEMA DOORS AND BUILDING SEPARATION DOORS.
S	INDICATES LOCATIONS ADA COMPLAINT DOOR SIGNAGE, DOORS W/ SIDELIGHTS, PROVIDE AND INSTALL BACK PLATES. TYP.



HANNEY & ASSOCIATES, ARCHITECTS  
1726 South Hillside, Wichita, Kansas, 67211  
Phone (316) 883-8985  
Fax (316) 884-1441  
www.hanneyarchitects.com

**2019**  
**OXFORD JUNIOR/SENIOR HIGH SCHOOL**  
**UNIFIED SCHOOL DISTRICT #358**  
515 N Water St, Oxford, KS 67119

DRAWINGS ISSUED		
NO.	DATE	ITEM ISSUED
1	12/20/19	ISSUED FOR BIDS
6	12/16/19	99% BOARD REVIEW
5	12/13/19	99% SUBMITTAL
4	9/20/19	50% REVIEW
3	6/10/19	DESIGN DEVELOPMENT
2	5/13/19	SCHEMATIC DESIGN
1	4/8/19	SCHEMATIC DESIGN

COMPUTER DRAWING	
358_ELEM_A401	

DATE: AUGUST, 2019	
DRAWN BY: MH, CH, MB, JC	CHECKED BY: MRH

MATERIAL GENERAL NOTES	
INTERIORS	
ID #	GENERAL NOTE
#1	ALL WORK IS TO BE IN ACCORDANCE WITH OXFORD, KS BUILDING CODES AND ALL OTHER CODES WHICH MAY HAVE AUTHORITY OVER THIS PROJECT. PROVIDE ALL NECESSARY SAFEGUARDS, BARRIERS, TEMPORARY POWER, LIGHTING, FIRE PROTECTION, ETC AS REQUIRED DURING CONSTRUCTION.
#2	G.C. TO PROVIDE AND INSTALL MATERIALS PER MANUFACTURER'S RECOMMENDATION. PROVIDE ACCESSORIES, TRIM COMPONENTS, ETC REQUIRED FOR COMPLETE INSTALLATION OF SPECIFIED MATERIAL.
#3	REFER TO PLANS, ELEVATIONS, SECTIONS AND SPECIFICATIONS FOR ADDITIONAL MATERIALS, EXTENT OF FINISH AND ADDITIONAL INFO. CONFLICTING NOTES TO BE BROUGHT TO ARCHITECT FOR REVIEW AND FINAL DECISION. PATCH AND REPAIR NOTATION MEANS NEWLY INSTALLED MATLS SHALL MATCH MATL AND COLOR OF EXISTG MATLS UNLESS NOTED OTHERWISE.
#4	FLOOR, WALL, CEILING, OPEN AREAS BENEATH/BEHIND EQUIPMENT, CABINETRY, AND MILLWORK, INSTALLER TO EXTEND NEW FINISH TO COVER OPEN AREA (APPLIES TO VIEWABLE AREAS ONLY, UNLESS NOTED OTHERWISE.)
#5	COLORS NOTED ARE FOR BIDDING PURPOSES ONLY. FINAL COLOR SELECTIONS BY ARCHITECT PRIOR TO ORDERING MATERIALS.
#6	ALL FINISHES PRODUCING NOXIOUS OR IRRITANTS FUMES OR ODORS (ELECTROSTATIC PAINTING, FLOOR FINISHING, ETC) SHALL BE DONE ONLY AFTER BUILDING MANAGEMENT REVIEW AND ONLY AFTER BUSINESS HOURS.
#7	PROVIDE A SUBMITTAL SCHEDULE ALLOWING FOR LONG LEAD TIME ITEMS TO PREVENT SUBSTITUTIONS.
#8	INTERIOR WALL AND CEILING FINISH: EXIT- CLASS A, CORRIDORS- CLASS A, ROOMS AND ENCLOSED SPACES- CLASS A. FLOOR FINISH: EXIT- NOT LESS THAN CLASS II IN ACCORDANCE WITH NFPA 253, SHALL COMPLY WITH DOC FF-I, "PILL TEST" (CPSC 16 CFR, PART 1630). FINISHES SHALL COMPLY WITH OR EXCEED THE CURRENT BUILDING CODE MINIMUM REQUIREMENTS.SMOKE DENSITY OF FINISH MATLS. LESS THAN 450. INTERIOR FLOOR FINISHES SHALL MEET ALL REQUIREMENTS OF SECTION 804 IBC. SEE TABLE 803.5 FOR FOOTNOTES.

FLOORING	
ID #	GENERAL NOTE
S.N.	PROVIDE SHOP DRAWING LAYOUT SHOWING ALL FLOOR PATTERN LOCATIONS, GRAIN DIRECTION AND SEAMING DIAGRAMS.
(FLR)	CONDUCT MOISTURE TESTS ON ALL CONCRETE SLABS WHERE FINISH MATERIALS ARE SCHEDULED. RECORD PASSING MOISTURE LEVELS PRIOR TO START OF INSTALLATION. REFERENCE MANUFACTURERS INSTALLATION SPECIFICATIONS FOR EACH FLOOR.
#1	FINISH TYPE TO VERIFY AND PROVIDE REMEDY TO MATCH MOISTURE LEVEL REQUIREMENTS.
#2	FLOORING CONTRACTOR: TILEWORK SHALL HAVE EXPANSION JOINT AT PERIMETER WALL/FLOOR JOINT. INFILL WITH A SEALANT.
#3	ALL VCT, CORK/RUBBER, AND OTHER HARD SURFACE FLOORING TO BE PREPPED AND SEALED PER MANUF.'S RECOMMENDATIONS.
#4	ALIGN TRANSITION OF FLOOR MATERIAL WITH CENTER OF HINGE IN DOORWAY. PROVIDE TRANSITION AS INDICATED BELOW: VCT TO CARPET: TR#1                      VCT TO CONCRETE: TR#2 CARPET TO CONCRETE: TR#3
#5	REMOVE EXISTING FLOORING, ADHESIVE AND MASTIC AT ALL EXISTING FLOORINGS SCHEDULED FOR DEMOLITION. PATCH AND PREP SUBFLOOR TO MEET MANUFACTURER'S REQUIREMENTS FOR NEW FLOORING MATERIALS. FLOAT SUBFLOOR AS NECESSARY TO ACHIEVE A SMOOTH & LEVEL FLOORING SURFACE.
#6	REMOVE EXISTING VA TILE FLOOR AND TACTILE MASTIC AS INDICATED ON DEMOLITION AND FLOOR PLANS

BASE	
ID #	GENERAL NOTE
#1	RUBBER COVE BASE ON ALL BUILT-IN BASE CABINETS, EXPOSED STRUCT COLUMNS, ETC. S.C. TO PROVIDE AND INSTALL CABINET BASE. FRAMEWORK HEIGHT SHALL BE 4" HEIGHT. COORDINATE LENGTH AND WIDTH WITH MILLWORK CONTRACTOR.
#2	WHERE SPECIFIED PROVIDE CONTINUOUS LENGTH OF RUBBER BASE WITH FIELD FORMED CORNERS.
#3	RESINUS BASE TO TURN UP WALL 6" AT ALL LOCATIONS WHERE RESINUS FLOORING IS SCHEDULED. REF. DETAILS FOR TRANSITION FROM RESINUS BASE TO WALL FINISH
#4	WHERE RUBBER BASE IS SCHEDULED TO BE INSTALLED OVER EXISTING GLAZED BLOCK AND WALLS IN SAME ROOM ARE SCHEDULED TO BE PAINTED, PAINTER TO TAPE OFF BOTTOM 3-1/2" OF EXISTING GLAZED BLOCK FOR ADHESION OF RUBBER BASE TO NON-PAINTED GLAZED BLOCK.

WALL	
ID #	GENERAL NOTE
#1	COORDINATE PRE-INSTALLATION MEETING FOR PATTERNED WALL TILE. PROVIDE SHOP DRAWINGS TO CONFIRM TILE LAYOUT BEFORE INSTALLATION.
#2	PATCH AND PREP ALL EXISTING WALLS TO REMAIN FOLLOWING DEMO. CONFIRM EQUIPMENT MOUNTING HEIGHTS WITH OWNER PRIOR TO RE-INSTALL.
#3	PROVIDE CERAMIC/PORCELAIN TILE TRIM PIECES - BULLNOSE, INSIDE/ OUTSIDE CORNERS, ETC. METAL TRIM PIECE WHERE NOTED.
#4	ALL EXISTING DOORS REMAINING TO REMAIN UNTOUCHED UNLESS NOTED OTHERWISE.
#5	INTERIOR H.M. FRAMES AND DOORS; PAINT. COLOR VARIES, EXTERIOR H.M. DOORS AND FRAMES; PAINT. COLOR VARIES. PAINT COLORS TO BE SELECTED ON SHOP DRAWINGS BY ARCHITECT.
#6	S.C. TO PAINT EXPOSED SIDE OF G.W.B. AT NEW CONSTRUCTION, UNLESS OTHERWISE NOTED. PROVIDE A SMOOTH LEVEL 4 DRYWALL FINISH ON ALL GYPSUM WALLS AND CEILING SOFFITS, ETC. UNLESS OTHERWISE NOTED. LEVEL 4 IS PER CURRENT VERSION OF RECOMMENDED LEVELS OF GYPSUM BOARD FINISH ACCESSED ON THE GYPSUM ASSOCIATION WEBSITE, GA-214-15
#7	GENERAL CONTRACTOR AND WALL FINISH CONTRACTOR SHALL COORDINATE INSTALL. OF FINISH MATERIALS. S.C. SHALL INSURE THE SURFACE CONDITION WILL NOT ADVERSELY AFFECT THE INSTALLATION OF THE WALL FINISH.
#8	ALL ELECTRICAL DEVICES LOCATED WITHIN AREAS SCHEDULED TO RECEIVE NEW FINISHES, NEW AND EXISTING; PROVIDE NEW COVER PLATES. VERIFY FINISH COLOR WITH ARCHITECT.
#9	PAINTED WALLS: CONFIRM COLOR WITH ARCHITECT AND OWNER PRIOR TO COMMENCING. PAINT SHEENS: REFER TO MANUFACTURER'S STANDARD DEFINITION FOR GLOSS RANGE ON THE FOLLOWING PAINT SHEENS: SATIN. PAINTED WALLS RECEIVE A TINTED PRIMER THAT COORDINATES WITH FINISH COLOR. ALL PAINTED GYPD. TO BE SATIN FINISH. ALL CMU TO BE SEMI-GLOSS FINISH.
#10	PAINTED WALLS RECEIVE A TINTED PRIMER THAT COORDINATES WITH FINISH COLOR.

CEILING	
ID #	GENERAL NOTE
G.N.	CENTER CEILING GRID AND TILE LAYOUT IN EACH ROOM UNLESS OTHERWISE NOTED. DO NOT INSTALL LESS THAN 1/2" CLG TILE.
(CLG)#1	PAINT SOFFITS, CEILINGS, ETC. COLOR: WHITE UNLESS OTHERWISE NOTED. PAINT UNDERSIDE AND FACE OF SOFFIT.
#2	REFER TO REFLECTED CEILING PLANS AND A2.11 AND A2.13 FOR ADDITIONAL SOFFIT AND CEILING DETAILS.

MISCELLANEOUS	
ID #	GENERAL NOTE
G.N. (MISC) #1	PROVIDE BLOCKING AT ALL WALLS SCHEDULED FOR WALL HUNG EQUIPMENT. ALL FURNITURE IS OWNER FURNISHED AND GENERAL CONTRACTOR INSTALLED UNLESS OTHERWISE NOTED.
#2	ROOM SIGNS ARE PROVIDED BY & INSTALLED BY GENERAL CONTRACTOR UNLESS OTHERWISE NOTED.
#3	G.G. SHALL INSTALL SIGNAGE AT INTERIOR OPENINGS TO HALLS, CORRIDORS OR EXTERIOR EXITS WHERE SIGNAGE IS SCHEDULED FOR ROOM. ALL SIGNAGE SHALL BE IN ACCORDANCE TO CURRENT LOCAL AND STATE REGULATIONS.
#4	PUBLIC AREAS AND NEW CLASSROOMS: WALLS WITH EXTERNAL CORNERS SHALL RECEIVE METAL CORNER TRIM AS DETAILED
#5	PAINT GRILLS, WALL DIFFUSERS, ELECTRICAL PANELS, WALL MOUNTED BOXES, ACCESS PANELS, ETC., WHICH ARE EXPOSED IN FINISHED SPACES TO MATCH THE SURFACE ON WHICH THEY OCCUR.
#6	CLEAN JOB SITE; REMOVING SCRAPS, DEBRIS AND WASTE MATERIALS DAILY.
#7	PROVIDE FLOOR MATERIAL TRANSITION ACCESSORIES WHERE FLOOR FINISH MATERIALS OF VARYING HEIGHT ADJOIN, INCLUDING THRESHOLDS, ADAPTORS, TRANSITIONS AND REDUCERS. ALL ACCESSORIES ARE TO BE RUBBER AS MANUFACTURED BY ROPPE OR ALUMINUM AS MANUFACTURED BY SCHLUTER.

FLOOR MATERIAL												
ID #	MATERIAL	MANUFACTURER	PRODUCT	COLOR	DIMENSION	SETTING	TRIM	ADDL INFORMATION	SETTING MATERIALS, UNDERLAYMENTS, MEMBRANE, SEALERS			
									ID #	MANUFACTURER	PRODUCT	ADDITIONAL INFO
F1	SEALED CONCRETE	SEAL-KRETE	DURA-SHELL WB	CLEAR W/ N.S. ADD.	(FULL COVERAGE)	2 COATS			SM-1			
F2	RESINOUS	STONHARD	STONBLEND	CRUSHED SLATE					SM-1	J+J FLOORING	ADHESIVE	FULL COVERAGE PER MFG'S REQ'S.
F3	CARPET-MODULAR	J+J FLOORING-KINETEX	POP, 1816	ROAO, 1712	24" x 24" TILE	SM-1		OWNER PROVIDED - FLOORING CONTRACTOR INSTALL	SM-2	FLOORING	FINISH MATERIAL MANU	MANU'S RECOMMENDED, FULL COVERAGE
F4	CARPET-MODULAR	J+J FLOORING-KINETEX	PROPEL II, 1817	1708 OUTPACE	24" x 24" TILE	SM-1		OWNER PROVIDED - FLOORING CONTRACTOR INSTALL	SM-3	TILE AND GROUTS	FINISH MATERIAL MANU	MANU'S RECOMM. PROTECTION & SEALERS
F5	CARPET-MODULAR	J+J FLOORING-KINETEX	UMBRA II, UMBRA II STRIPE	SHADOW, SHADOW STRIPE	18" x 36" PLANK	SM-1						
F6	LUX VINYL TILE	J+J FLOORING	TATAMI	1019 EDO	18" x 36" TILE	SM-2		LOOSE LAY, WALL-TO-WALL, PERIMETER GLUE				
F7	LUX VINYL TILE	J+J FLOORING	TATAMI	1018 KYOTO	18" x 36" TILE	SM-2		LOOSE LAY, WALL-TO-WALL, PERIMETER GLUE				
F8	CARPET-MODULAR WALK-OFF	J+J FLOORING	CATWALK 1427	SPOTLIGHT	24" x 24"	SM-1						
F9	CERAMIC MOSAIC TILE	DAL TILE	KEYSTONES	SUEDE GRAY SPECKLE D208	2"x2"	SM-3			GROUT AND MAINTENANCE			
F10	CERAMIC MOSAIC TILE	DAL TILE	VOLUME 1.0	ELECTRIC MOSS VL79, VL80	12"x12", 6"x6" (AMP.BLK. ACCEPT)	SM-3		PROVIDE OPT-TILE SCHLUTER MTL TRIM	ID #	MANUFACTURER	PRODUCT	COLOR
F10A	CERAMIC MOSAIC TILE	DAL TILE	VOLUME 1.0	AMPLIFY BLACK VL80	6"x6"			PROVIDE OPT-TILE SCHLUTER MTL TRIM	G-1	BOSTIC	EZ-POXY	
									G-2	BOSTIC	TRU COLOR	
									G-5	BOSTIC	SANDED	

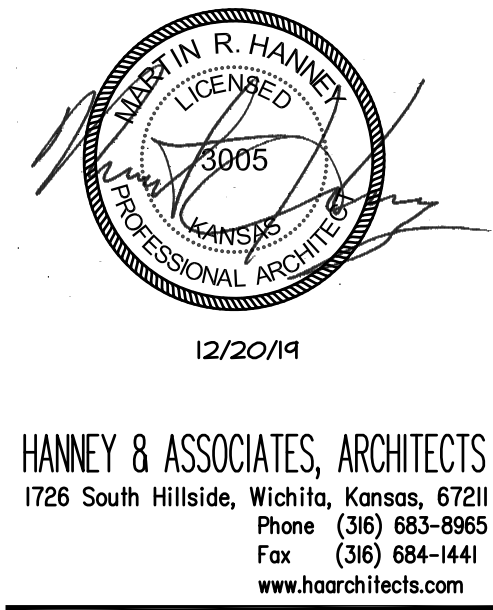
WALL BASE MATERIAL													
ID #	MATERIAL	MANUFACTURER	PRODUCT	COLOR	DIMENSION	SETTING	MTL TRIM	ADDL INFORMATION					
B1	RUBBER WALL BASE	ROPPE	PINNACLE - STAND, COVE	100 BLACK	4" X 1/8"	SM-2	-	-					
B2	RESINOUS	DUR-A-FLEX	DUR-A-CHIP	GALAXY									
ID #	MATERIAL	MANUFACTURER	PRODUCT	COLOR	DIMENSION	SETTING	MTL TRIM	ADDL INFORMATION					
W1	WATER BASED EPOXY PAINT	SHERWIN WILLIAMS	PRE CAT WATER BASE EPOXY	MULTIPLE COLORS	5.2 DRY HILLS TOTAL			LOW SHEEN					
W2	LATEX PAINT	SHERWIN WILLIAMS	PROMAR 1000 PRM & ZERO	MULTIPLE COLORS	5.2 DRY HILLS TOTAL			T-1	ROPPE	VCT-CPT #50	100 BLACK		
W3	ENAMEL PAINT- DOOR FRAMES	SHERWIN WILLIAMS	PRO-OYL PRM & WAT BASE	AKOYO URETHANE ENAMEL	COLOR: CUSTOM MATCH			T-2	ROPPE	VCT-CONG #45	100 BLACK		
W4	CERAMIC WALL TILE	DAL-TILE	COLOR WHEEL	WHITE OOD, DESERT GRAY XII	4" x 12"	SM-3	T-3, T-4	REF TO DETAILS AND ELEVATIONS FOR PATTERN, AB.2	T-3	ROPPER	CPT-CONG #24	100 ALUMINUM	
				BLACK XIII, SUEDE GRAY OIBS,					T-4	SCHLUTER	JOLLY	SATIN ALUMINUM	
				SHIT, CURRANT					T-5	SCHLUTER	RONDEC	SATIN ALUMINUM	
									T-6	SCHLUTER	QUADEC	SATIN ALUMINUM	

CEILING FINISH MATERIALS											INCL. ADDTL. ACCESSORIES FOR COMPLETE INSTALL.		
ID #	MATERIAL	MANUFACTURER	PRODUCT	COLOR	DIMENSION	SETTING	MTL TRIM	ADDL. INFORMATION					
C1	ACOUSTICAL TILE	ROCKFON, CLASS A	ARTIC. STONE WOOL	WHITE	24" x 24" x 5/8"	SO EDGE	-	CIA: 24 X 48. NRC: .75					
	9/16 SUSPENSION SYSTEM	CHICAGO METALLIC	FIRE RATED: 1 HR	WHITE	24" x 24" SYSTEM	-	-						
C2	ACOUSTICAL TILE	ROCKFON, CLASS A	ALASKA: STONE WOOL	WHITE	24" X 48" x 3/4"	SO EDGE	-	NRC: .90					
	9/16 SUSPENSION SYSTEM	CHICAGO METALLIC	FIRE RATED: 1 HR	WHITE	24" x 48" SYSTEM	-	-						
C3	ACOUSTICAL TILE	ROCKFON, CLASS A	TROPIC: STONE WOOL	WHITE	24" x 24" x 5/8"	SLN EDGE	-	NRC: .85					
	9/16 SUSPENSION SYSTEM	CHICAGO METALLIC	FIRE RATED: 1 HR	WHITE	24" x 24" SYSTEM	-	-						
C4	ACOUSTICAL TILE	ROCKFON, CLASS A	KORAL	WHITE	24" x 48" x 5/8"	SO EDGE	-	NRC: .75					
	9/16 SUSPENSION SYSTEM	CHICAGO METALLIC	FIRE RATED: 1 HR	WHITE	24" x 48" SYSTEM	-	-						
C5	LATEX PAINT (ON GYPD.)	SHERWIN WILLIAMS	PROMAR 200 PRM & ZERO	WHITE, VERIFY COLOR NO.	5.2 DRY MILLS TOTAL			SATIN SHEEN, FINISH LEVEL 4, GA-215-15					
C6	LATEX PAINT (ON AGLAY-IN)	SHERWIN WILLIAMS	PROMAR 200 PRM & ZERO	WHITE, VERIFY COLOR NO.	5.2 DRY MILLS TOTAL			SATIN SHEEN, FINISH LEVEL 4, GA-215-15					
DOOR STAIN, AND WOOD TRIM:													
ID #	MANUFACTURER	PRODUCT	COLOR										
ST-1	SHERWIN WILLIAMS	STAIN COLOR	CUSTOM MATCH TO MATCH EXISTING										
SPECIAL PROVISIONS REQUIRED: ALL WOOD AND WOOD LOOK MATERIALS SHALL MATCH EXISTING WOOD													
RUBBER STAIR TREADS:													
ID #	MANUFACTURER	PRODUCT	COLOR										
STR-1	ROPPE	RELIEF CUT, RAISED DOT	BLACK - PAINT RISER TO MATCH										
											#98 W/OUT RISER		
SPECIAL PROVISIONS REQUIRED: ALL WOOD AND WOOD LOOK MATERIALS SHALL MATCH EXISTING WOOD													

MILLWORK MATERIALS								
ID #	MATERIAL	MANUFACTURER	PRODUCT	COLOR	DIMENSION	SETTING	MTL TRIM	ADDL INFORMATION
M1	LAMINATE COUNTER-	FORMICA	HORIZONTAL GRADE LAM	NATURAL GRAY FELT 4971-58	VARIES	SM-2	3MM PVC EDGE	EDGE: 1 1/2" W. BACKSPLASH: 3/4" EDGE
	LAMINATE CABINET	FORMICA	VERTICAL GRADE LAM	BLACK 909-58	VARIES	SM-2	3MM PVC EDGE	
M2	LAMINATE COUNTER	FORMICA	HORIZONTAL GRADE LAM	NATURAL GRAY FELT 4971-58		SM-2	3MM PVC EDGE	EDGE: 1 1/2" W. BACKSPLASH: 3/4" EDGE
	LAMINATE CABINET	FORMICA	VERTICAL GRADE LAM	NORTH SEA C90-60		SM-2	3MM PVC EDGE	
								INT: THERMOFUSED MELAMINE: WHITE

WINDOW SILL MATERIALS								
ID #	MATERIAL	MANUFACTURER	PRODUCT	COLOR	DIMENSION	SETTING	MTL TRIM	ADDL INFORMATION
WS1	QUARRY TILE	DALTILE	QUARRY TEXTURES	ASHEN GRAY 0T03	8"x8"x1/2"	SM-3	-	

HIGH SCHOOL ROOM FINISH SCHEDULE	
1	2
3	4
5	6
7	8
9	10
11	12
13	14
15	16
17	18
19	20
21	22
23	24
25	26
27	28
29	30
31	32
33	34
35	36
37	38
39	40
41	42
43	44
45	46
47	48
49	50
51	52
53	54
55	56
57	58
59	60
61	62
63	64
65	66
67	68
69	70
71	72
73	74
75	76
77	78
79	80
81	82
83	84
85	86
87	88
89	90
91	92
93	94
95	96
97	98
99	100



DRAWINGS ISSUED		
NO.	DATE	ITEM ISSUED
7	2/20/14	ISSUED FOR BIDS
6	12/16/14	94% BOARD REVIEW
5	12/13/14	94% SUBMITTAL
4	9/20/14	50% REVIEW
3	6/10/14	DESIGN DEVELOPMENT
2	5/13/14	SCHEMATIC DESIGN
1	4/18/14	SCHEMATIC DESIGN

COMPUTER DRAWING

SHEET	
-------	--

\_\_\_\_\_

# A8.1

OF 1 SHEETS



MATERIAL GENERAL NOTES	
INTERIORS	
ID #	GENERAL NOTE
G.N. (INT)	ALL WORK IS TO BE IN ACCORDANCE WITH OXFORD, KS BUILDING CODES AND ALL OTHER CODES WHICH MAY HAVE AUTHORITY OVER THIS PROJECT. PROVIDE ALL NECESSARY SAFEGUARDS, BARRIERS, TEMPORARY POWER, LIGHTING, FIRE PROTECTION, ETC AS REQUIRED DURING CONSTRUCTION.
#2	G.C. TO PROVIDE AND INSTALL MATERIALS PER MANUFACTURER'S RECOMMENDATION. PROVIDE ACCESSORIES, TRIM COMPONENTS, ETC REQUIRED FOR COMPLETE INSTALLATION OF SPECIFIED MATERIAL.
#3	REFER TO PLANS, ELEVATIONS, SECTIONS AND SPECIFICATIONS FOR ADDITIONAL MATERIALS, EXTENT OF FINISH AND ADDITIONAL INFO. CONFLICTING NOTES TO BE BROUGHT TO ARCHITECT FOR REVIEW AND FINAL DECISION. PATCH AND REPAIR NOTATION MEANS NEWLY INSTALLED MATLS SHALL MATCH MATL AND COLOR OF EXISTG MATLS UNLESS NOTED OTHERWISE.
#4	FLOOR, WALL, CEILING: OPEN AREAS BENEATH/BEHIND EQUIPMENT, CABINETRY, AND MILLWORK, INSTALLER TO EXTEND NEW FINISH TO COVER OPEN AREA (APPLIES TO VIEWABLE AREAS ONLY, UNLESS NOTED OTHERWISE.)
#5	COLORS NOTED ARE FOR BIDDING PURPOSES ONLY. FINAL COLOR SELECTIONS BY ARCHITECT PRIOR TO ORDERING MATERIALS.
#6	ALL FINISHES PRODUCING NOXIOUS OR IRRITATING FUMES OR ODORS (ELECTROSTATIC PAINTING, FLOOR FINISHES, ETC) SHALL BE DONE ONLY AFTER BUILDING MANAGEMENT REVIEW AND ONLY AFTER BUSINESS HOURS.
#7	PROVIDE A SUBMITTAL SCHEDULE ALLOWING FOR LONG LEAD TIME ITEMS TO PREVENT SUBSTITUTIONS.
#8	INTERIOR WALL AND CEILING FINISH: EXIT- CLASS A, CORRIDORS- CLASS A, ROOMS AND ENCLOSED SPACES- CLASS A. FLOOR FINISH: EXIT- NOT LESS THAN CLASS II IN ACCORDANCE WITH NFPA 253, SHALL COMPLY WITH DOC FF-1, "PILL TEST" (CPSC 16 CFR, PART 1630). FINISHES SHALL COMPLY WITH OR EXCEED THE CURRENT BUILDING CODE MINIMUM REQUIREMENTS.SMOKE DENSITY OF FINISH MATLS: LESS THAN 450. INTERIOR FLOOR FINISHES SHALL MEET ALL REQUIREMENTS OF SECTION 804 IBC. SEE TABLE 803.5 FOR FOOTNOTES.
FLOORING	
ID #	GENERAL NOTE
G.N. (FLR)	PROVIDE SHOP DRAWING LAYOUT SHOWING ALL FLOOR PATTERN LOCATIONS, GRAIN DIRECTION AND SEAMING DIAGRAMS. CONDUCT MOISTURE TESTS ON ALL CONCRETE SLABS WHERE FINISH MATERIALS ARE SCHEDULED. RECORD PASSING MOISTURE LEVELS PRIOR TO START OF INSTALLATION. REFERENCE MANUFACTURERS INSTALLATION SPECIFICATIONS FOR EACH FLOOR FINISH TYPE TO VERIFY AND PROVIDE REMEDY TO MATCH MOISTURE LEVEL REQUIREMENTS.
#2	FLOORING CONTRACTOR: TILEWORK SHALL HAVE EXPANSION JOINT AT PERIMETER WALL/FLOOR JOINT. INFILL WITH A SEALANT.
#3	ALL VCT, CORK/RUBBER, AND OTHER HARD SURFACE FLOORING TO BE PREPPED AND SEALED PER MANUF'S RECOMMENDATIONS
#4	ALIGN TRANSITION OF FLOOR MATERIAL WITH CENTER OF HINGE IN DOORWAY. PROVIDE TRANSITION AS INDICATED BELOW: VCT TO CARPET: TR#1 VCT TO CONCRETE: TR#2 CARPET TO CONCRETE: TR#3
#5	REMOVE EXISTING FLOORING, ADHESIVE AND MASTIC AT ALL EXISTING FLOORING SCHEDULED FOR DEMOLITION. PATCH AND PREP SUBFLOOR TO MEET MANUFACTURER'S REQUIREMENTS FOR NEW FLOORING MATERIALS. FLOAT SUBFLOOR AS NECESSARY TO ACHIEVE A SMOOTH & LEVEL FLOORING SURFACE.
#6	REMOVE EXISTING VA TILE FLOOR AND TACTILE MASTIC AS INDICATED ON DEMOLITION AND FLOOR PLANS
BASE	
ID #	GENERAL NOTE
#1	RUBBER COVE BASE ON ALL BUILT-IN BASE CABINETS, EXPOSED STRUCT COLUMNS, ETC. G.C. TO PROVIDE AND INSTALL CABINET BASE. FRAMEWORK HEIGHT SHALL BE 4" HEIGHT. COORDINATE LENGTH AND WIDTH WITH MILLWORK CONTRACTOR.
#2	WHERE SPECIFIED PROVIDE CONTINUOUS LENGTH OF RUBBER BASE WITH FIELD FORMED CORNERS.
#3	RESINOUS BASE TO TURN UP WALL 6" AT ALL LOCATIONS WHERE RESINOUS FLOORING IS SCHEDULED, REF. DETAILS FOR TRANSITION FROM RESINOUS BASE TO WALL FINISH
#4	WHERE RUBBER BASE IS SCHEDULED TO BE INSTALLED OVER EXISTING GLAZED BLOCK AND WALLS IN SAME ROOM ARE SCHEDULED TO BE PAINTED, PAINTER TO TAPE OFF BOTTOM 3-1/2" OF EXISTING GLAZED BLOCK FOR ADHESION OF RUBBER BASE TO NON-PAINTED GLAZED BLOCK.
WALL	
ID #	GENERAL NOTE
G.N. (WALL)	COORDINATE PRE-INSTALLATION MEETING FOR PATTERNED WALL TILE. PROVIDE SHOP DRAWINGS TO CONFIRM TILE LAYOUT BEFORE INSTALLATION.
#2	PATCH AND PREP ALL EXISTING WALLS TO REMAIN FOLLOWING DEMO. CONFIRM EQUIPMENT MOUNTING HEIGHTS WITH OWNER PRIOR TO RE-INSTALL.
#3	PROVIDE CERAMIC/PORCELAIN TILE TRIM PIECES - BULLNOSE, INSIDE/ OUTSIDE CORNERS, ETC. METAL TRIM PIECE WHERE NOTED
#4	ALL EXISTING DOORS REMAINING TO REMAIN UNTOUCHED UNLESS NOTED OTHERWISE.
#5	INTERIOR H.M. FRAMES AND DOORS: PAINT. COLOR VARIES. EXTERIOR H.M. DOORS AND FRAMES: PAINT. COLOR VARIES. PAINT COLORS TO BE SELECTED ON SHOP DRAWINGS BY ARCHITECT.
#6	G.C. TO PAINT EXPOSED SIDE OF G.W.B. AT NEW CONSTRUCTION, UNLESS OTHERWISE NOTED. PROVIDE A SMOOTH LEVEL 4 DRYWALL FINISH ON ALL GYPSUM WALLS AND CEILING SOFFITS, ETC. UNLESS OTHERWISE NOTED. LEVEL 4 IS PER CURRENT VERSION OF RECOMMENDED LEVELS OF GYPSUM BOARD FINISH ACCESSSED ON THE GYPSUM ASSOCIATION WEBSITE. GA-214-15
#7	GENERAL CONTRACTOR AND WALL FINISH CONTRACTOR SHALL COORDINATE INSTALL OF FINISH MATERIALS. G.C. SHALL INSURE THE SURFACE CONDITION WILL NOT ADVERSELY AFFECT THE INSTALLATION OF THE WALL FINISH.
#8	ALL ELECTRICAL DEVICES LOCATED WITHIN AREAS SCHEDULED TO RECEIVE NEW FINISHES, NEW AND EXISTING: PROVIDE NEW COVER PLATES. VERIFY FINISH COLOR WITH ARCHITECT.
#9	PAINTED WALLS: CONFIRM COLOR WITH ARCHITECT AND OWNER PRIOR TO COMMENCING. PAINT SHEENS: REFER TO MANUFACTURER'S STANDARD DEFINITION FOR GLOSS RANGE ON THE FOLLOWING PAINT SHEENS: SATIN. PAINTED WALLS RECEIVE A TINTED PRIMER THAT COORDINATES WITH FINISH COLOR. ALL PAINTED GYPBD. TO BE SATIN FINISH. ALL CMU TO BE SEMI-GLOSS FINISH.
#10	PAINTED WALLS RECEIVE A TINTED PRIMER THAT COORDINATES WITH FINISH COLOR.
CEILING	
ID #	GENERAL NOTE
G.N. (CLG)	CENTER CEILING GRID AND TILE LAYOUT IN EACH ROOM UNLESS OTHERWISE NOTED. DO NOT INSTALL LESS THAN 1/2" CLG TILE.
#2	REFER TO REFLECTED CEILING PLANS AND A2.11 AND A2.13 FOR ADDITIONAL SOFFIT AND CEILING DETAILS.
MISCELLANEOUS	
ID #	GENERAL NOTE
G.N. (MISC)	PROVIDE BLOCKING AT ALL WALLS SCHEDULED FOR WALL HUNG EQUIPMENT. ALL FURNITURE IS OWNER FURNISHED AND GENERAL CONTRACTOR INSTALLED UNLESS OTHERWISE NOTED.
#2	ROOM SIGNS ARE PROVIDED BY & INSTALLED BY GENERAL CONTRACTOR UNLESS OTHERWISE NOTED.
#3	G.C. SHALL INSTALL SIGNAGE AT INTERIOR OPENINGS TO HALLS, CORRIDORS OR EXTERIOR EXITS WHERE SIGNAGE IS SCHEDULED FOR ROOM. ALL SIGNAGE SHALL BE IN ACCORDANCE TO CURRENT LOCAL AND STATE REGULATIONS.
#4	PUBLIC AREAS AND NEW CLASSROOMS: WALLS WITH EXTERNAL CORNERS SHALL RECEIVE METAL CORNER TRIM AS DETAILED
#5	PAINT GRILLS, WALL DIFFUSERS, ELECTRICAL PANELS, WALL MOUNTED BOXES, ACCESS PANELS, ETC., WHICH ARE EXPOSED IN FINISHED SPACES TO MATCH THE SURFACE ON WHICH THEY OCCUR.
#6	CLEAN JOB SITE; REMOVING SCRAPS, DEBRIS AND WASTE MATERIALS DAILY.
#7	PROVIDE FLOOR MATERIAL TRANSITION ACCESSORIES WHERE FLOOR FINISH MATERIALS OF VARYING HEIGHT ADJOIN, INCLUDING THRESHOLDS, ADAPTORS, TRANSITIONS AND REDUCERS. ALL ACCESSORIES ARE TO BE RUBBER AS MANUFACTURED BY ROPPE OR ALUMINUM AS MANUFACTURED BY SCHLUTER.

FLOOR MATERIAL									
ID #	MATERIAL	MANUFACTURER	PRODUCT	COLOR	DIMENSION	SETTING	TRIM	ADDL INFORMATION	
F1	SEALED CONCRETE	SEAL-KRETE	DURA-SHELL WB	CLEAR W/ N.S. ADD.	(FULL COVERAGE)	2 COATS			
F2	RESINOUS	DUR-A-FLEX	DUR-A-CHIP						
F3	CARPET-MODULAR	J+J FLOORING-KINETEX	POP, 1816	ROJO, 1712	24" x 24" TILE	SM-1		OWNER PROVIDED - FLOORING CONTRACTOR INSTALL	
F4	CARPET-MODULAR	J+J FLOORING-KINETEX	PROPEL II, 1817	1708 OUTPACE	24" x 24" TILE	SM-1		OWNER PROVIDED - FLOORING CONTRACTOR INSTALL	
F5	CARPET-MODULAR	J+J FLOORING-KINETEX	UMBRA II, UMBRA II STRIPE	SHADOW, SHADOW STRIPE	18" x 36" PLANK	SM-1			
F6	LUX VINYL TILE	J+J FLOORING	TATAMI	1019 EDO	18" x 36" TILE	SM-2		LOOSE LAY, WALL-TO-WALL, PERIMETER GLUE	
F7	LUX VINYL TILE	J+J FLOORING	TATAMI	1018 KYOTO	18" x 36" TILE	SM-2		LOOSE LAY, WALL-TO-WALL, PERIMETER GLUE	
F8	CARPET-MODULAR WALK-OFF	J+J FLOORING	CATWALK 1427	SPOTLIGHT	24" x 24"	SM-1			
F9	CERAMIC MOSAIC TILE	DAL TILE	KEYSTONES	SUEDE GRAY SPOCKLE D208	2"x2"	SM-3			
F10	CERAMIC MOSAIC TILE	DAL TILE	VOLUME 1.0	ELECTRIC MOSS VL79, VL80	12"x12", 6"x6" (AMP-BLK. ACCENT)	SM-3		PROVIDE OPT-TILE SCHLUTER MTL TRIM	
F10A	CERAMIC MOSAIC TILE	DAL TILE	VOLUME 1.0	AMPLIFY BLACK VL80	6"x6"	SM-3		PROVIDE OPT-TILE SCHLUTER MTL TRIM	
WALL BASE MATERIAL									
ID #	MATERIAL	MANUFACTURER	PRODUCT	COLOR	DIMENSION	SETTING	MTL TRIM	ADDL INFORMATION	
B1	RUBBER WALL BASE	ROPPE	PINNACLE, STAND, COVE	100 BLACK	4" X 1/8"	SM-2	-		
B2	RESINOUS	DUR-A-FLEX	DUR-A-CHIP	GALAXY					
ID #	MATERIAL	MANUFACTURER	PRODUCT	COLOR	DIMENSION	SETTING	MTL TRIM	ADDL INFORMATION	
W1	WATER BASED EPOXY PAINT	SHERWIN WILLIAMS	PRE CAT WAT BASE EPOXY	MULTIPLE COLORS	5.2 DRY MILLS TOTAL	-	-	LOW SHEEN	
W2	LATEX PAINT	SHERWIN WILLIAMS	PROMAR 200 PRM & ZERO	MULTIPLE COLORS	5.2 DRY MILLS TOTAL	-	-	SATIN SHEEN, FINISH LEVEL 4, GA-214-15	
W3	ENAMEL PAINT- DOOR FRAMES	SHERWIN WILLIAMS	PRO-CRYL PRIM & WAT BASE	AKYD URETHANE ENAMEL	COLOR: CUSTOM MATCH	-	-		
W4	CERAMIC WALL TILE	DAL-TILE	COLOR WHEEL	WHITE D100, DESERT GRAY X114	4" x 12"	SM-3	T-4, T-5	REF TO PATTERNS A8.2	
				BLACK K111, SUEDE GRAY O182					
				SH7, CURRANT					
CEILING FINISH MATERIALS									
ID #	MATERIAL	MANUFACTURER	PRODUCT	COLOR	DIMENSION	SETTING	MTL TRIM	ADDL INFORMATION	
C1	ACOUSTICAL TILE	ROCKFON, CLASS A	ARTIC. STONE WOOL	WHITE	24" x 24" x 5/8"	SQ EDGE	-	CIA: 24 X 48. NRC: .75	
	9/16 SUSPENSION SYSTEM	CHICAGO METALLIC	FIRE RATED: 1 HR	WHITE	24" x 24" SYSTEM	-	-		
C2	ACOUSTICAL TILE	ROCKFON, CLASS A	ALASKA: STONE WOOL	WHITE	24" x 48" x 3/4"	SQ EDGE	-	NRC: .90	
	9/16 SUSPENSION SYSTEM	CHICAGO METALLIC	FIRE RATED: 1 HR	WHITE	24" x 48" SYSTEM	-	-		
C3	ACOUSTICAL TILE	ROCKFON, CLASS A	TROPIC: STONE WOOL	WHITE	24" x 24" x 5/8"	SLN EDGE	-	NRC: .85	
	9/16 SUSPENSION SYSTEM	CHICAGO METALLIC	FIRE RATED: 1 HR	WHITE	24" x 24 SYSTEM	-	-		
C4	ACOUSTICAL TILE	ROCKFON, CLASS A	KORAL	WHITE	24" x 48" x 5/8"	SQ EDGE	-	NRC: .75	
	9/16 SUSPENSION SYSTEM	CHICAGO METALLIC	FIRE RATED: 1 HR	WHITE	24" x 48" SYSTEM	-	-		
C5	LATEX PAINT (ON GYPBD.)	SHERWIN WILLIAMS	PROMAR 200 PRM & ZERO	WHITE, VERIFY COLOR NO.	5.2 DRY MILLS TOTAL			SATIN SHEEN, FINISH LEVEL 4, GA-215-15	
C6	LATEX PAINT (ON AGLAY-IN)	SHERWIN WILLIAMS	PROMAR 200 PRM & ZERO	WHITE, VERIFY COLOR NO.	5.2 DRY MILLS TOTAL			SATIN SHEEN, FINISH LEVEL 4, GA-215-15	
MILLWORK MATERIALS									
ID #	MATERIAL	MANUFACTURER	PRODUCT	COLOR	DIMENSION	SETTING	MTL TRIM	ADDL INFORMATION	
M1	LAMINATE COUNTER-	FORMICA	HORIZONTAL GRADE LAM	NATURAL GRAY FELT 4971-58	VARIES	SM-2	3MM PVC EDGE	EDGE: 1 1/2" W. BACKSPLASH: 3/4" EDGE	
	LAMINATE CABINET	FORMICA	VERTICAL GRADE LAM	BLACK 909-58	VARIES	SM-2	3MM PVC EDGE		
M2	LAMINATE COUNTER	FORMICA	HORIZONTAL GRADE LAM	NATURAL GRAY FELT 4971-58		SM-2	3MM PVC EDGE	EDGE: 1 1/2"W. BACKSPLASH: 3/4" EDGE	
	LAMINATE CABINET	FORMICA	VERTICAL GRADE LAM	NORTH SEA C90-60		SM-2	3MM PVC EDGE	INT: THERMOFUSED MELAMINE: WHITE	
WINDOW SILL MATERIALS									
ID #	MATERIAL	MANUFACTURER	PRODUCT	COLOR	DIMENSION	SETTING	MTL TRIM	ADDL INFORMATION	
WS1	QUARRY TILE	DAL-TILE	QUARRY TEXTURES	ASHEN GRAY 0703	8"x8"x1/2"	SM-3	-		

HIGH SCHOOL - ALTERNATES - ROOM FINISH SCHEDULE											
FIRST FLOOR ROOM NAME	ROOM #	FLOOR DTL/USHT	BASE DTL/USHT	WALLS: DTL/USHT				CEILING		MILLWORK SILL	FINISH NOTE
				NORTH	SOUTH	WEST	EAST	MAT'L	HEIGHT		
CORRIDOR	109	F3/F4/F5	BI	EXIST.	EXIST.	EXIST.	EXIST.	EXIST.	EXIST.		CARPET ALTERNATE 1
CORRIDOR	110	F3/F4/F5	BI	EXIST.	EXIST.	EXIST.	EXIST.	EXIST.	EXIST.		CARPET ALTERNATE 1
CORRIDOR	111	F3/F4/F5	BI	EXIST.	EXIST.	EXIST.	EXIST.	EXIST.	EXIST.		CARPET ALTERNATE 1
MENS RR	114	F10	BI	W1	W1	W1	W1	C3	EXIST.		GEN. FLOORING NOTE 6, BASE NOTE 4
WOMEN'S RR	115	F10	BI	W1	W1	W1	W1	C3	EXIST.		GEN. FLOORING NOTE 6, BASE NOTE 4
CORRIDOR	118	F3/F4/F5	BI	W2	W2	W2	W2	EXIST.	EXIST.		CARPET ALTERNATE 1
LIBRARY	119	F3/F4/F5	BI	EXIST.	EXIST.	EXIST.	EXIST.	EXIST.	EXIST.		CARPET ALTERNATE 1
CORRIDOR	120	F3/F4/F5	BI	EXIST.	EXIST.	EXIST.	EXIST.	EXIST.	EXIST.		CARPET ALTERNATE 1
CORRIDOR	128	F3/F4/F5	BI	EXIST.	EXIST.	EXIST.	EXIST.	EXIST.	EXIST.		CARPET ALTERNATE 1
CORRIDOR	131	F3/F4/F5	BI	EXIST.	EXIST.	EXIST.	EXIST.	EXIST.	EXIST.		CARPET ALTERNATE 1
CORRIDOR	132	F3/F4/F5	BI	EXIST.	EXIST.	EXIST.	EXIST.	EXIST.	EXIST.		CARPET ALTERNATE 1
OFFICIAL'S ROOM	134	F3/F4/F5	BI	W2	W2	W2	W2	C2	EXIST.		CONSTRUCTION ALTERNATE 6
OFFICIAL'S RESTROOM	135	F10A	BI	-	-	-	-	-	-		CONSTRUCTION ALTERNATE 6
OFFICIAL'S ROOM	136	F3/F4/F5	BI	W2	W2	W2	W2	C2	EXIST.		CONSTRUCTION ALTERNATE 6
OFFICIAL'S RESTROOM	137	F10A	BI	-	-	-	-	-	-		CONSTRUCTION ALTERNATE 6
CORRIDOR	138	F3/F4/F5	BI	EXIST.	EXIST.	EXIST.	EXIST.	EXIST.	EXIST.		CARPET ALTERNATE 1
CORRIDOR	157	F3/F4/F5	BI	EXIST.	EXIST.	EXIST.	EXIST.	EXIST.	EXIST.		CARPET ALTERNATE 1
CORRIDOR	407	F3/F4/F5	BI	EXIST	EXIST	EXIST	EXIST	EXIST	EXIST		CARPET ALTERNATE 2
CORRIDOR	409	F3/F4/F5	BI	EXIST	EXIST	EXIST	EXIST	EXIST	EXIST		CARPET ALTERNATE 2
LOBBY	500	F3/F4/F5	BI	EXIST	EXIST	EXIST	EXIST	EXIST	EXIST		CARPET ALTERNATE 3
LOBBY	503	F3/F4/F5	BI	EXIST	EXIST	EXIST	EXIST	EXIST	EXIST		CARPET ALTERNATE 3
LOBBY	504	F3/F4/F5	BI	EXIST	EXIST	EXIST	EXIST	EXIST	EXIST		CARPET ALTERNATE 3

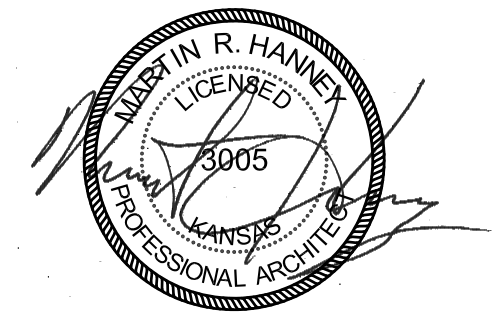
ALTERNATE 9: COMPLETELY REMOVE ALL EXISTING FLOOR TILE IN RESTROOMS 114 & 115. PREP FLOOR FOR NEW TILE.

DALTILE, VOLUME 1.0  
12"x12" COLOR: ELECTRIC MOSS,  
6"x6" ACCENT, COLOR: AMPLIFY  
BLACK VL70

DALTILE, VOLUME 1.0  
12"x12" COLOR: ELECTRIC MOSS,  
6"x6" ACCENT, COLOR: AMPLIFY  
BLACK VL70

ALTERNATE 9: COMPLETELY REMOVE ALL EXISTING FLOOR TILE IN RESTROOMS 114 & 115. PREP FLOOR FOR NEW TILE.

MEN'S RESTROOM 114, WOMEN'S RESTROOM 115  
ENLARGED FLOOR PLANS  
SCALE: 1/4" = 1'-0"



12/20/19  
HANNEY & ASSOCIATES, ARCHITECTS  
1726 South Hillside, Wichita, Kansas, 67211  
Phone (316) 883-8985  
Fax (316) 884-1441  
www.haarchitects.com

2019  
OXFORD JUNIOR/SENIOR HIGH SCHOOL  
UNIFIED SCHOOL DISTRICT #358  
515 N Water St, Oxford, KS 67119

DRAWINGS ISSUED		
NO.	DATE	ITEM ISSUED
7	12/20/19	ISSUED FOR BIDS
6	12/16/19	99% BOARD REVIEW
5	12/13/19	99% SUBMITTAL
4	9/20/19	50% REVIEW
3	6/10/19	DESIGN DEVELOPMENT
2	5/13/19	SCHEMATIC DESIGN
1	4/8/19	SCHEMATIC DESIGN

COMPUTER DRAWING	
323_H5_A801.dwg	

DATE: AUGUST, 2019	
DRAWN BY: MH, CH, MB, JC	CHECKED BY: MRH

SHEET  
A8.1  
ALT.  
OF 1 SHEETS



INSTALLATION DETAILS

FINISH MATERIAL ID

SYM	DESCRIPTION	SHEET
F#	FLOOR MATERIAL	A8.1
B#	BASE MATERIAL	A8.1
ST #	STAIR MATERIAL	A8.1
MT #	METAL TRIM MATERIAL	A8.1
W#	WALL MATERIAL	A8.1
C#	CEILING MATERIAL	A8.1
M#	MILLWORK MATERIAL	A8.1
WS#	WINDOWSILL MATERIAL	A8.1
SM #	SETTING MATERIAL	A8.1

GENERAL FINISH NOTES REFERENCED ON SHEET A8.0



HANNEY & ASSOCIATES, ARCHITECTS  
1726 South Hillside, Wichita, Kansas, 67211  
Phone (316) 883-8965  
Fax (316) 884-1441  
www.haarchitects.com

2019  
OXFORD JUNIOR/SENIOR HIGH SCHOOL  
UNIFIED SCHOOL DISTRICT #358  
515 N Water St, Oxford, KS 67119

DRAWINGS ISSUED		
NO.	DATE	ITEM ISSUED
1	4/8/19	SCHEMATIC DESIGN
2	5/13/19	SCHEMATIC DESIGN
3	6/10/19	DESIGN DEVELOPMENT
4	9/20/19	50% REVIEW
5	12/13/19	99% SUBMITTAL
6	12/16/19	99% BOARD REVIEW
7	12/20/19	ISSUED FOR BIDS

COMPUTER DRAWING	
358_A802.dwg	

DATE: AUGUST, 2019	
DRAWN BY: MH, CH, MB, JC	CHECKED BY: MRH

SHEET

A8.2

OF 1 SHEETS

1 RUBBER WALL BASE  
COIL LENGTH  
CONCEAL ATTACHMENT

2 CERAMIC TILE WAINCOT  
METAL TRIM AT TRANSITION FROM TILE TO BLOCK

3 METAL TRIM AT RESINOUS COVE BASE

4 RESINOUS FLASH COVE BASE  
TROWEL AND BROADCAST SYSTEM

5 RUBBER WALL BASE  
COIL LENGTH  
CONCEAL ATTACHMENT

6 MIRROR TRIM

7 CARPET TO VCT RUBBER TRANSITION

8 CERAMIC TILE EDGE PROTECTION

9 HIGH-TO-LOW FLOOR TRANSITION

10 CERAMIC TILE INSIDE CORNER

11 SHOWER DRAIN TROUGH

12 CERAMIC TILE-TO-CPT TRANSITION

13 WINDOW SILL

14 BLOCKING DETAIL AT WALL ACCESSORIES

15 BLOCKING REQUIRED FOR WALL MOUNTED FIXTURES, FURNITURE & EQUIP.  
GRAB BAR SHOWN FOR APPLICATION REFERENCE.

16 TYPICAL CORRIDOR TILE WAINSCOT PATTERN

17 TILE PATTERN AT VESTIBULE 211

18 TILE PATTERN AT CORRIDOR 200, NORTH WALL, CONTINUE AT CORRIDOR 210

19 CARPET PATTERN AT CORRIDOR 200 & 210 - CARPET PATTERN AT CARPET ALTERNATES #1-3 CORRIDORS SIMILAR,  
CARPET PATTERN AT LIBRARY ALTERNATE SIMILAR, VERIFY EXACT PATTERN W/ ARCHITECT AND OWNER





HANNEY & ASSOCIATES, ARCHITECTS  
1726 South Hillside, Wichita, Kansas, 67211  
Phone (316) 883-8965  
Fax (316) 884-1441  
www.haarchitects.com

2019  
OXFORD JUNIOR/SENIOR HIGH SCHOOL  
UNIFIED SCHOOL DISTRICT #358  
515 N Water St, Oxford, KS 67119



- FLOOR FINISH LEGEND**
- BASE BID - CARPET OVER EXISTING VCT
  - BASE BID - REMOVE EXIST VAT, REPLACE WITH CARPET WHERE INDICATED
  - BASE BID - REPLACE EXISTING CARPET WITH NEW CARPET
  - BASE BID - NEW SEALED CONCRETE
  - BASE BID - EXIST CONCRETE
  - BASE BID - REMOVE EXIST VCT, CLEAN AND SEAL EXIST. CONCRETE
  - BASE BID - REMOVE AND REPLACE CERAMIC TILE
  - ALTERNATE - REMOVE AND REPLACE CERAMIC TILE / NEW CERAMIC TILE
  - BASE BID - CERAMIC TILE
  - BASE BID - INSTALL NEW LVT
  - BASE BID - RESINOUS
  - BASE BID - REFINISH EXISTING WOOD STAGE
  - ALTERNATE #1 - CPT TILE OVER EXISTING VCT
  - ALTERNATE #2 - CPT TILE OVER EXISTING VCT
  - ALTERNATE #3 - CARPET - REMOVE AND REPLACE VAT

**A FLOOR FINISH PLAN**  
SCALE: 1/16" = 1'-0"  
NORTH

NOTE: THIS SHEET IS TO BE PRINTED AND VIEWED IN COLOR FOR REPRESENTATION OF FLOOR FINISHES PER AREA

DRAWINGS ISSUED		
NO.	DATE	ITEM ISSUED
1	4/8/14	SCHEMATIC DESIGN
2	5/13/14	SCHEMATIC DESIGN
3	6/10/14	DESIGN DEVELOPMENT
4	9/20/14	50% REVIEW
5	12/13/14	94% SUBMITTAL
6	12/16/14	94% BOARD REVIEW
7	12/20/14	ISSUED FOR BIDS

COMPUTER DRAWING	
358_ELEM_A401	

DATE: AUGUST, 2014	
DRAWN BY: MH, CH, MB, JC	CHECKED BY: MRH