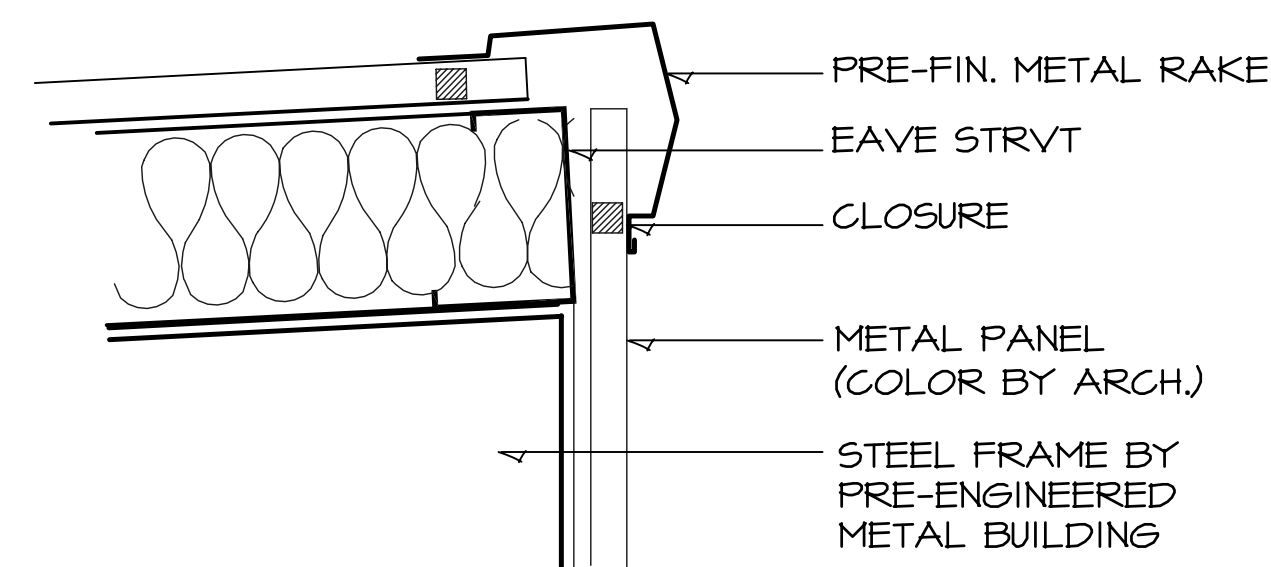


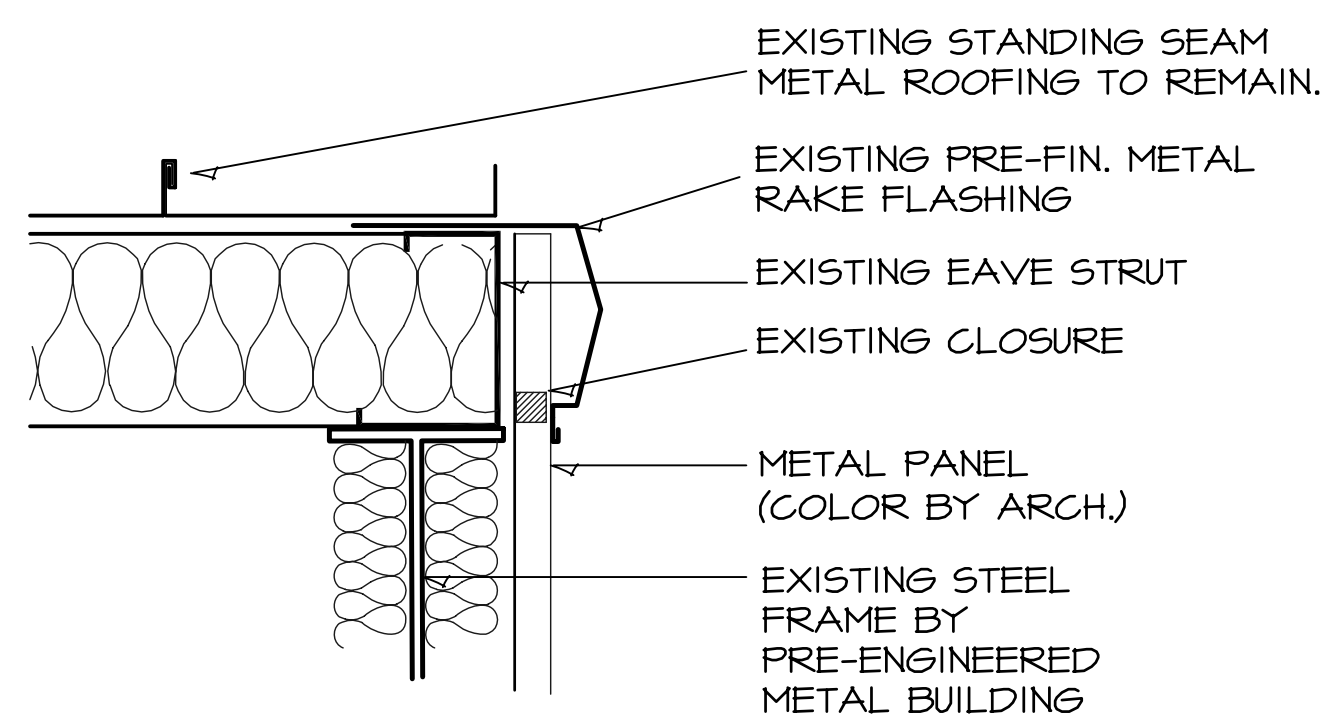
**1 ROOF DETAIL**

SCALE: 1-1/2" = 1'-0"



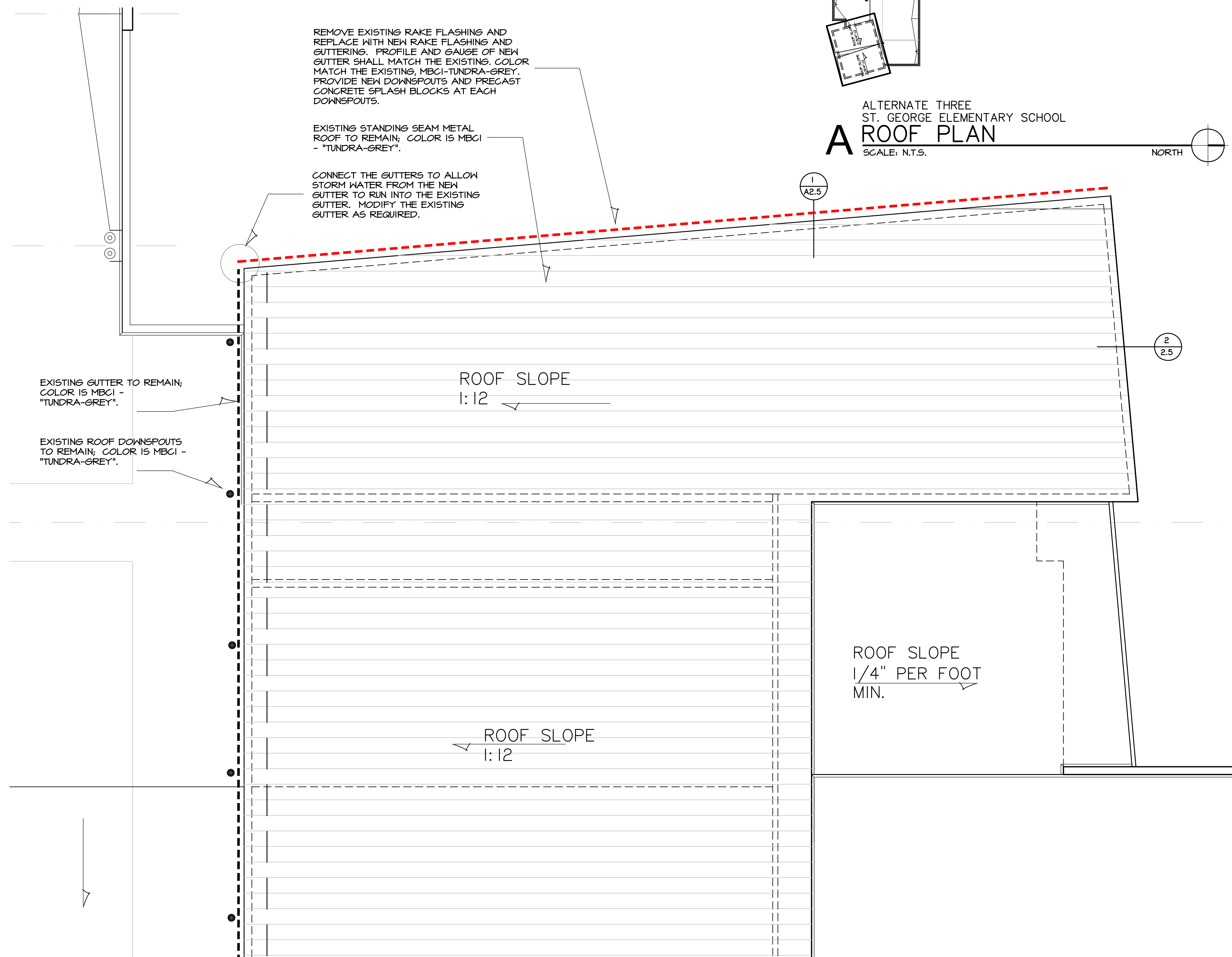
**2 ROOF DETAIL - EXISTING EAVE**

SCALE: 1-1/2" = 1'-0"



**3 ROOF DETAIL- EXISTING RAKE**

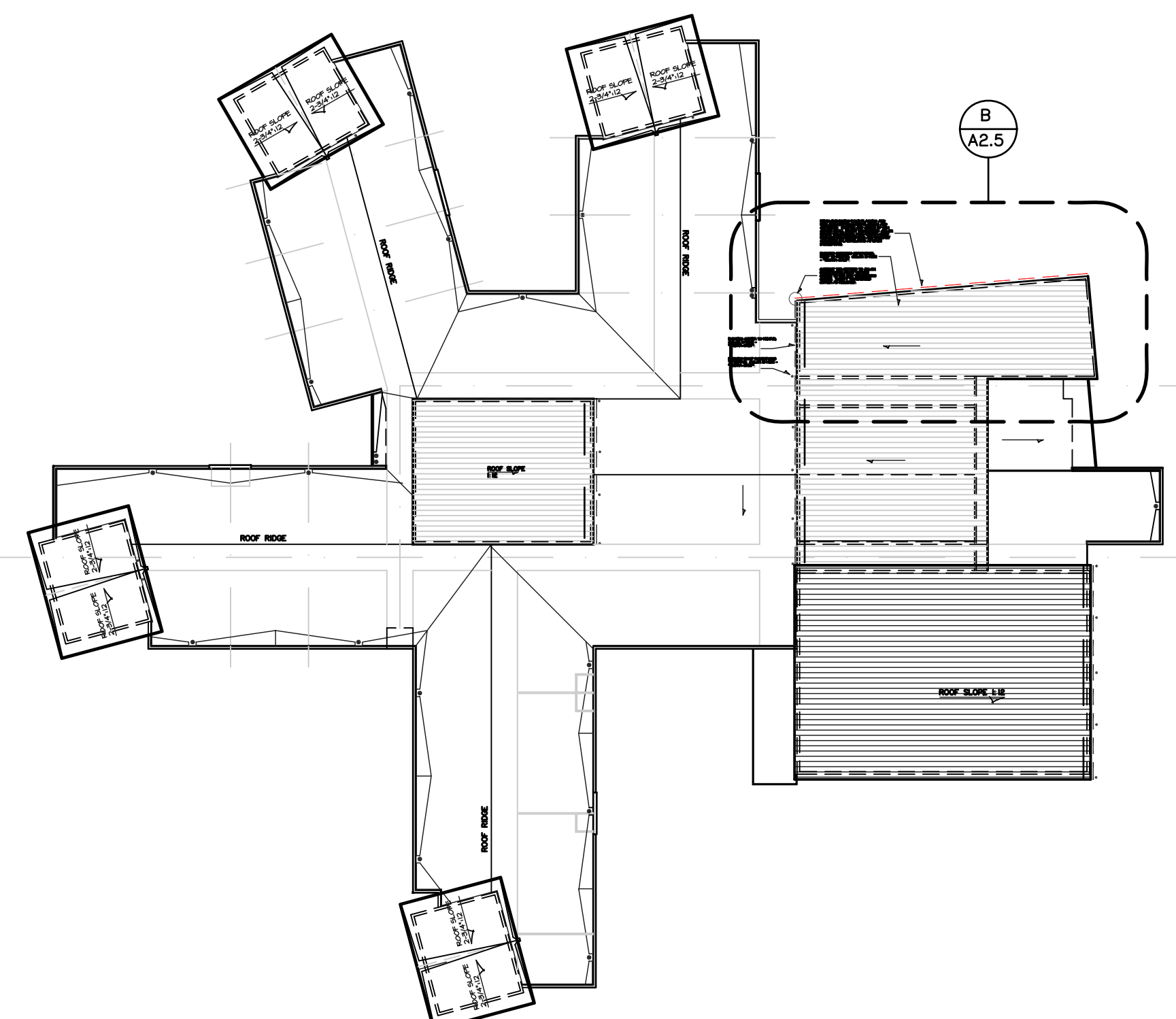
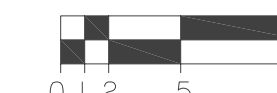
SCALE: 1-1/2" = 1'-0"



ALTERNATE THREE  
ST. GEORGE ELEMENTARY SCHOOL  
**B PARTIAL ROOF PLAN**

SCALE: 1/8" = 1'-0"

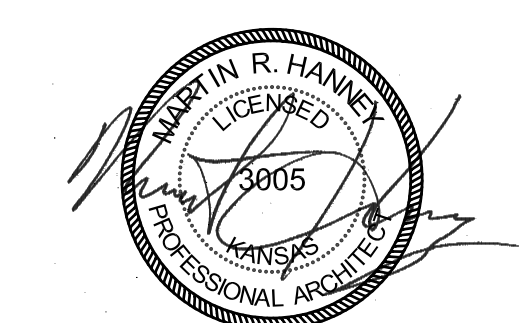
NORTH



ALTERNATE THREE  
ST. GEORGE ELEMENTARY SCHOOL  
**A ROOF PLAN**

SCALE: N.T.S.

NORTH



02/02/20  
**HANNEY & ASSOCIATES, ARCHITECTS**  
1726 South Hillside, Wichita, Kansas, 67211  
Phone (316) 883-8865  
Fax (316) 884-1441

**2020**  
**RCJSHS - ReROOFING PROJECT**  
**UNIFIED SCHOOL DISTRICT 323**  
ROCK CREEK J-S HIGH SCHOOL -- 9355 FLUSH ROAD - FLUSH, KANSAS

DRAWINGS ISSUED			
NO.	DATE	ITEM	ISSUED
2	1/17/20	ISSUED FOR BIDS	
1	1/13/20	BOE REVIEW	

COMPUTER DRAWING  
2020\ROOF\323\_A205.dwg

DATE: JANUARY 2020  
DRAWN BY: CH MH CHECKED BY: MRH

SHEET  
**A2.5**  
OF - SHEETS