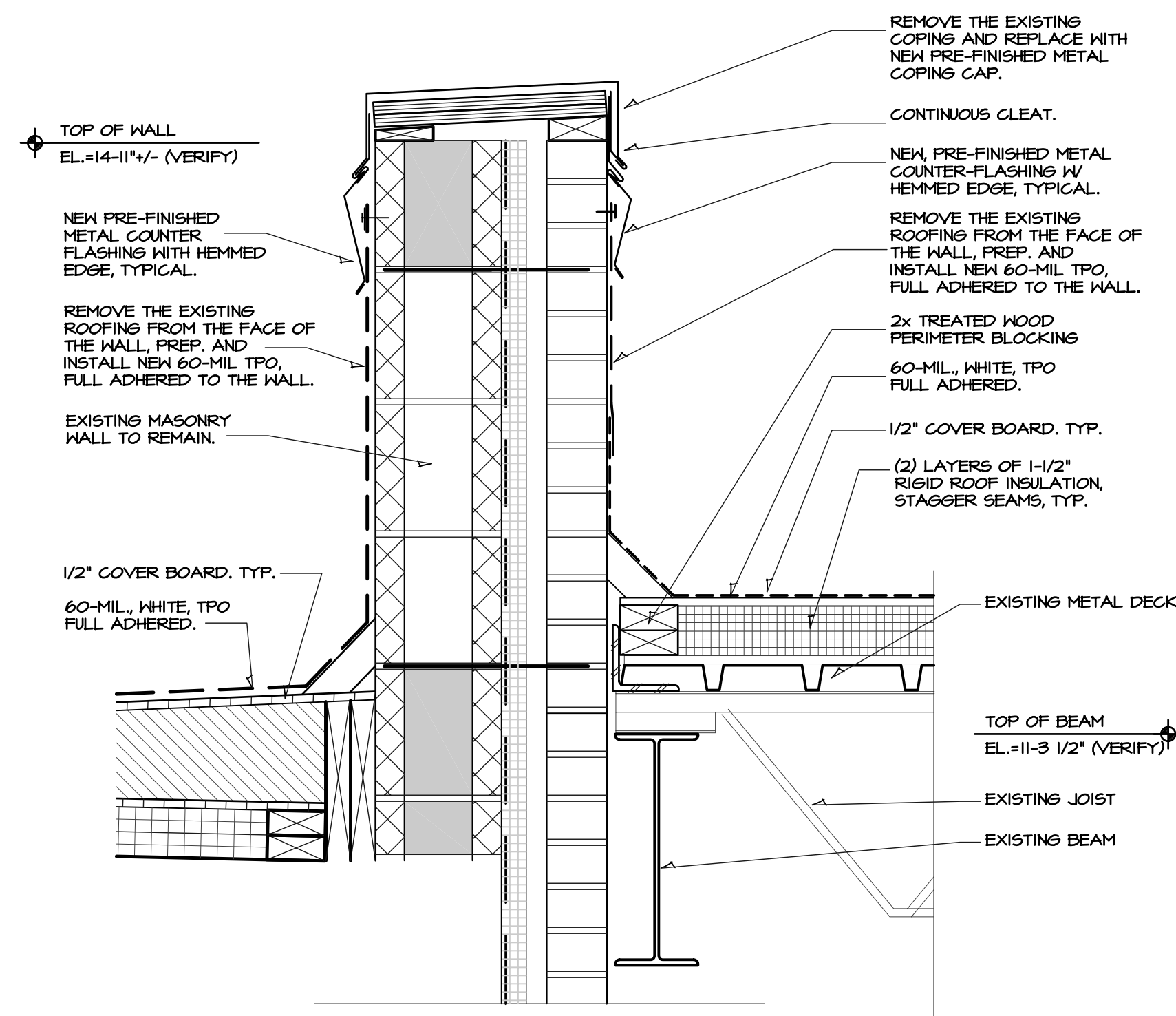
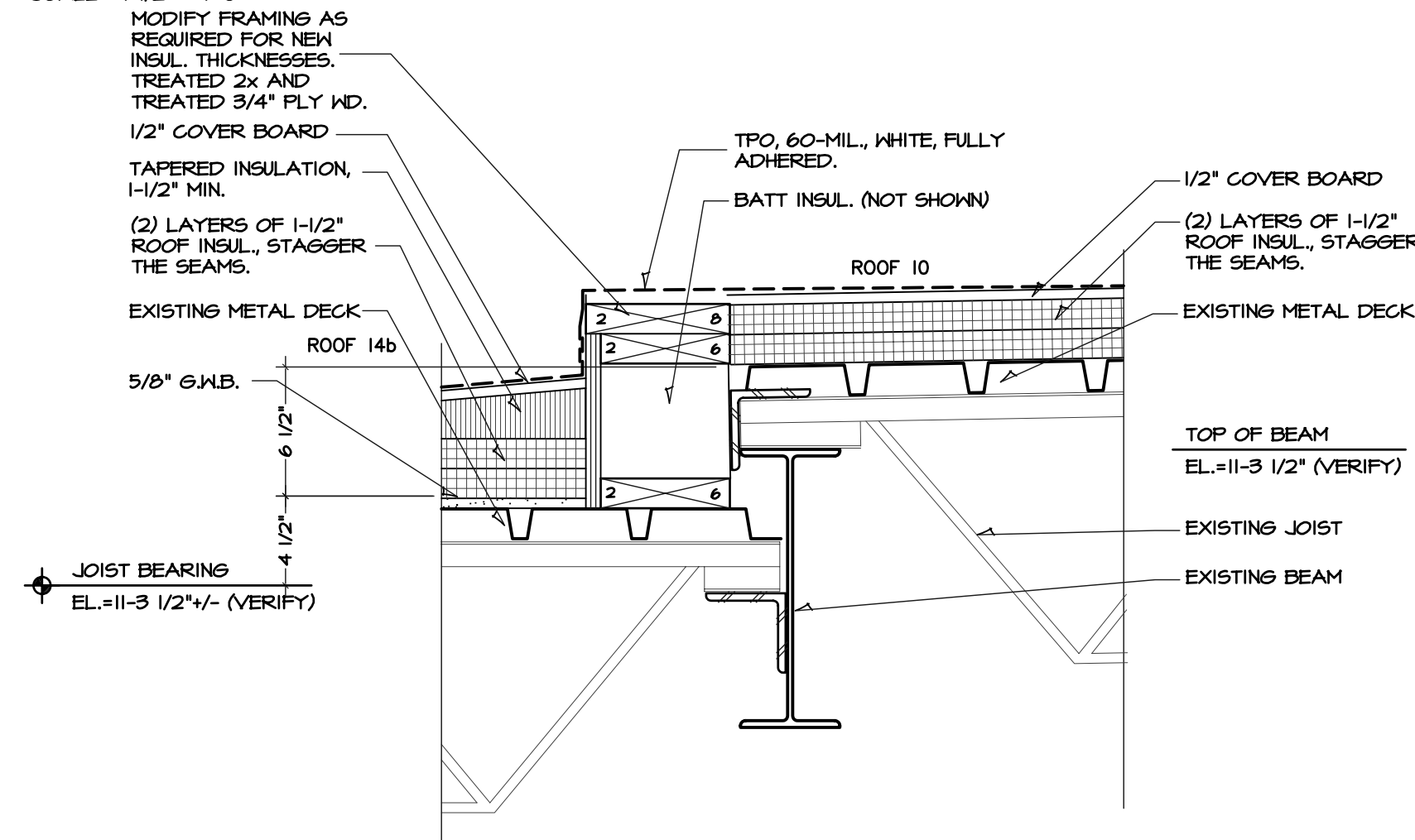


02/02/20
HANNEY & ASSOCIATES, ARCHITECTS
 1726 South Hillside, Wichita, Kansas, 67211
 Phone (316) 853-8865
 Fax (316) 854-1441

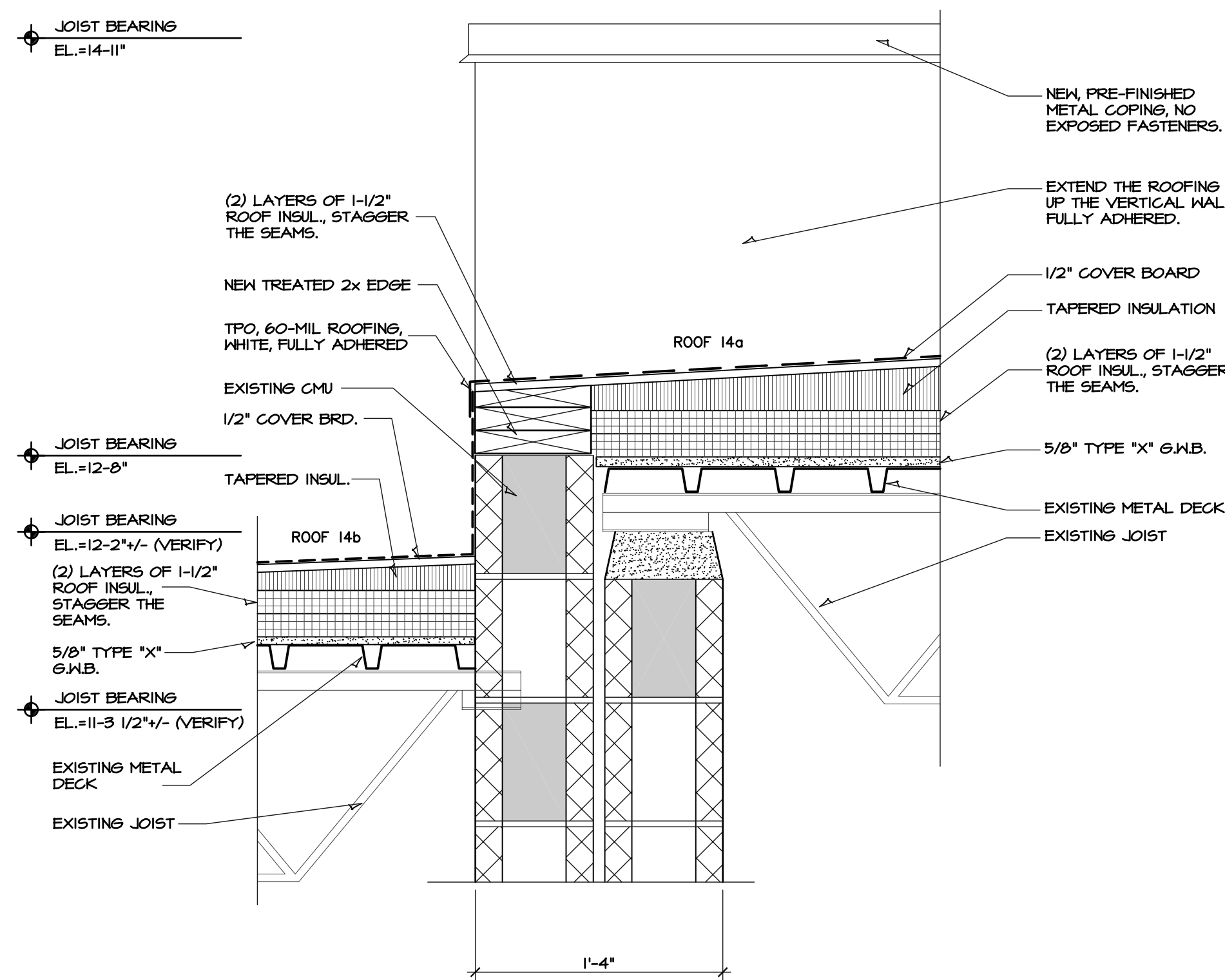
2020
RCJSHS - ReROOFING PROJECT
UNIFIED SCHOOL DISTRICT 323
 ROCK CREEK J-S HIGH SCHOOL -- 9355 FLUSH ROAD - FLUSH, KANSAS



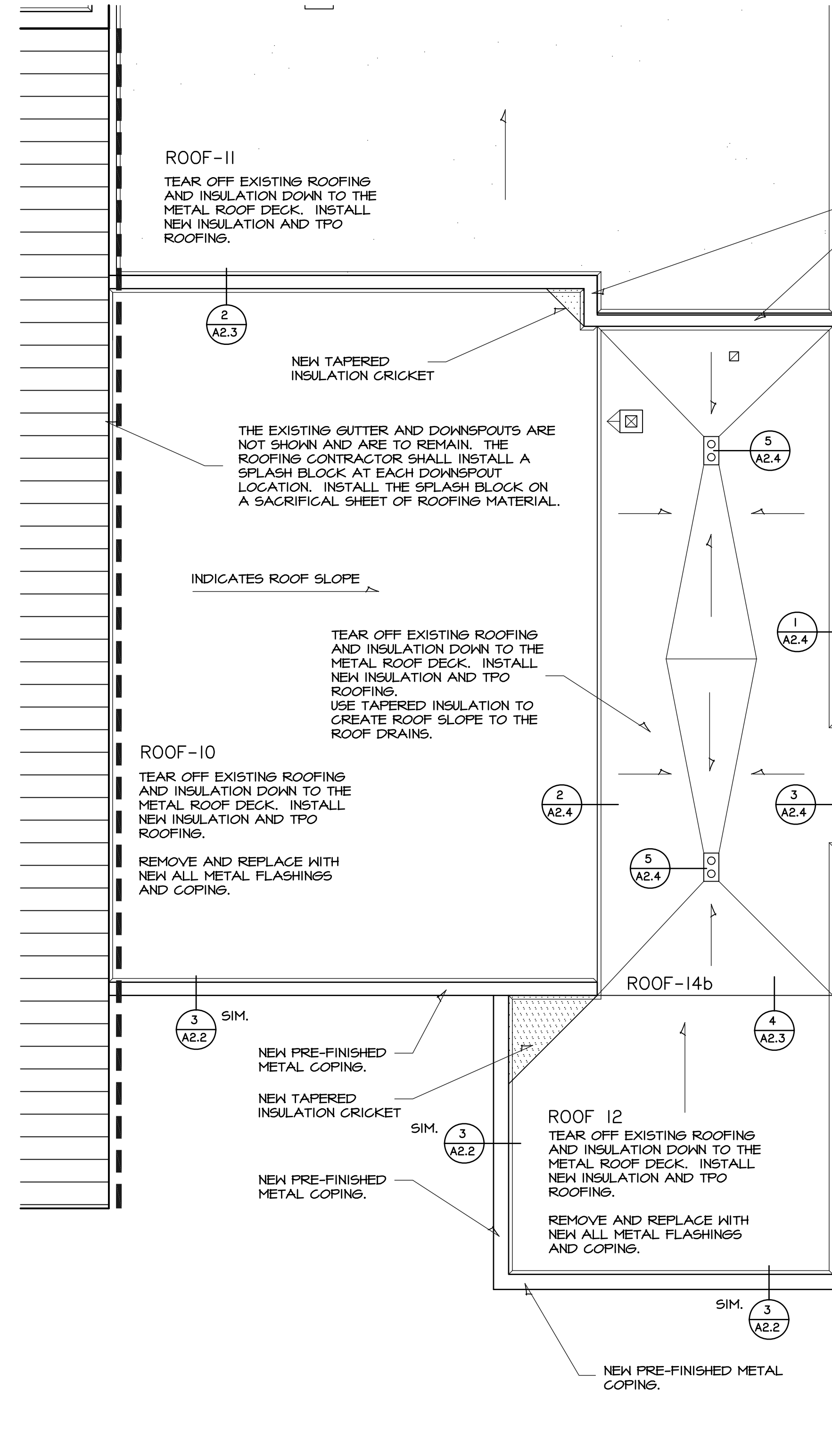
1 ROOF DETAIL
 SCALE: 1/2" = 1'-0"



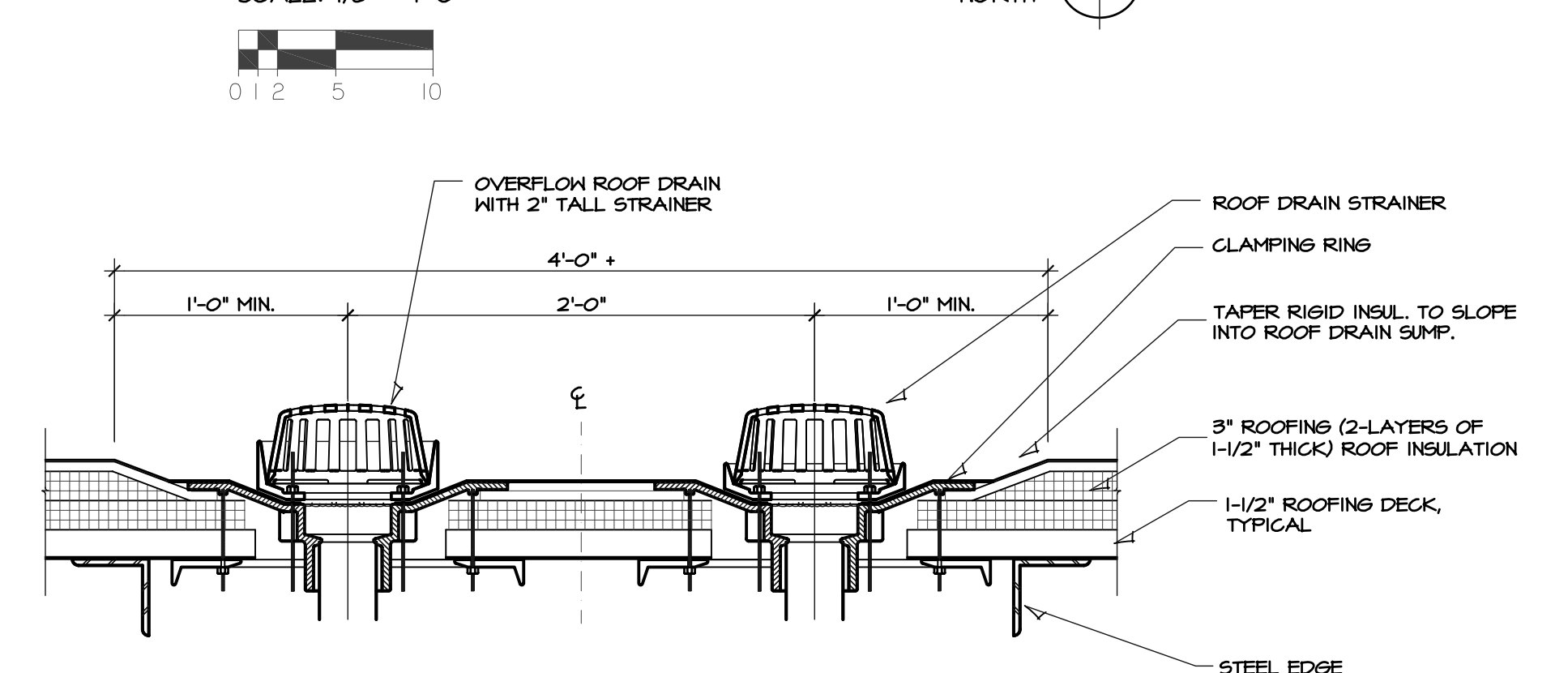
2 ROOF DETAIL
 SCALE: 1/2" = 1'-0"



3 ROOF DRAIN
 SCALE: 1/2" = 1'-0"

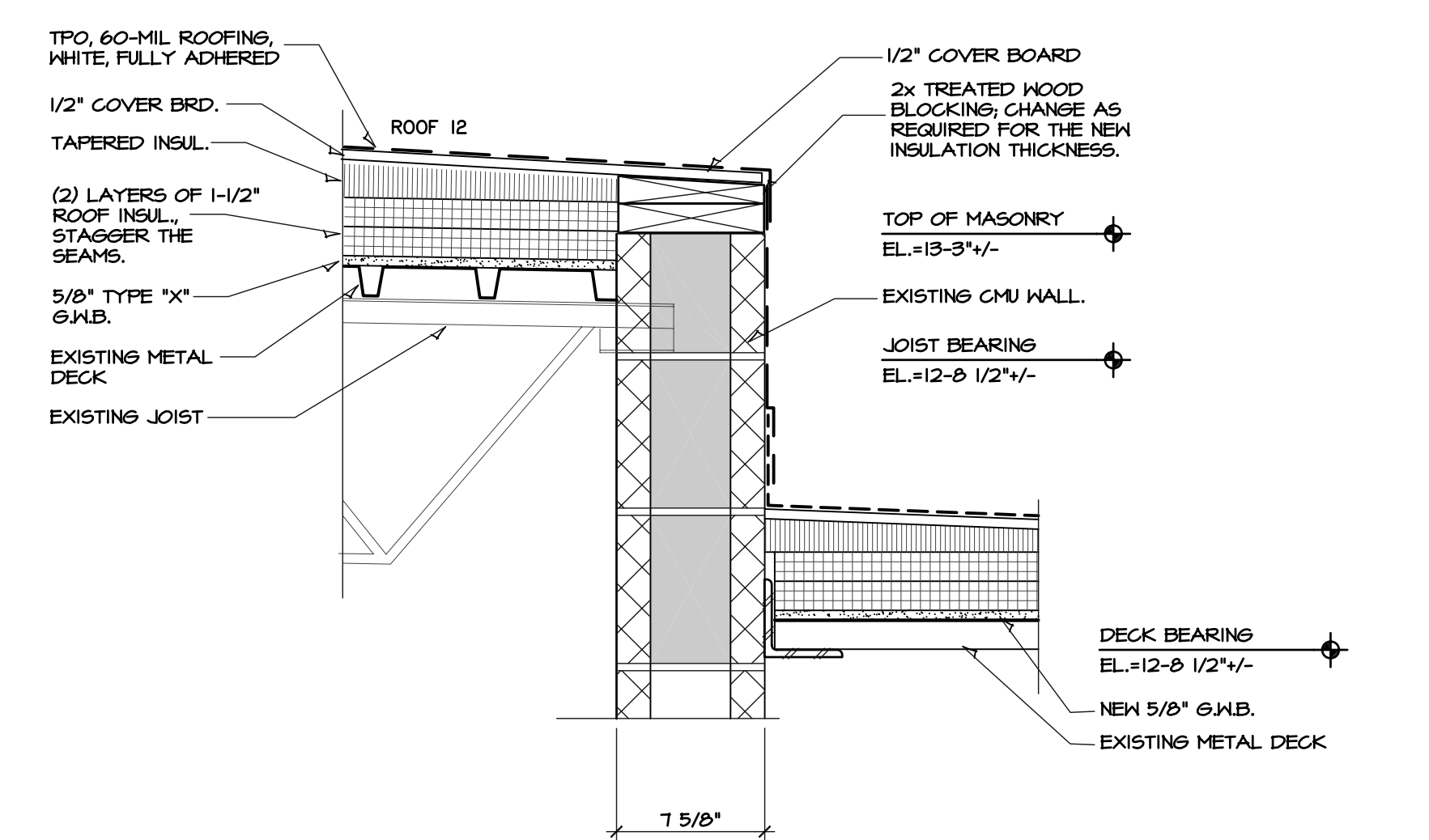


B PARTIAL ROOF PLAN
 SCALE: 1/8" = 1'-0"



1. ALL BOLTS OR CLAMPS MUST BE IN PLACE TO PROVIDE CONSTANT COMPRESSION ON WATER CUT-OFF MASTIC
 2. HOLE IN MEMBRANE MUST EXCEED SIZE OF DRAIN PIPE

5 ROOF DRAIN
 SCALE: 1/2" = 1'-0"



4 ROOF DRAIN
 SCALE: 1/2" = 1'-0"

DRAWINGS ISSUED			
NO.	DATE	ITEM	ISSUED
2	1/17/20	ISSUED FOR BIDS	
1	1/13/20	BOE REVIEW	

COMPUTER DRAWING
 2020\ROOF\323_A204.dwg

DATE: JANUARY 2020
 DRAWN BY: CH MH CHECKED BY: MRH

SHEET

A2.4

OF SHEETS