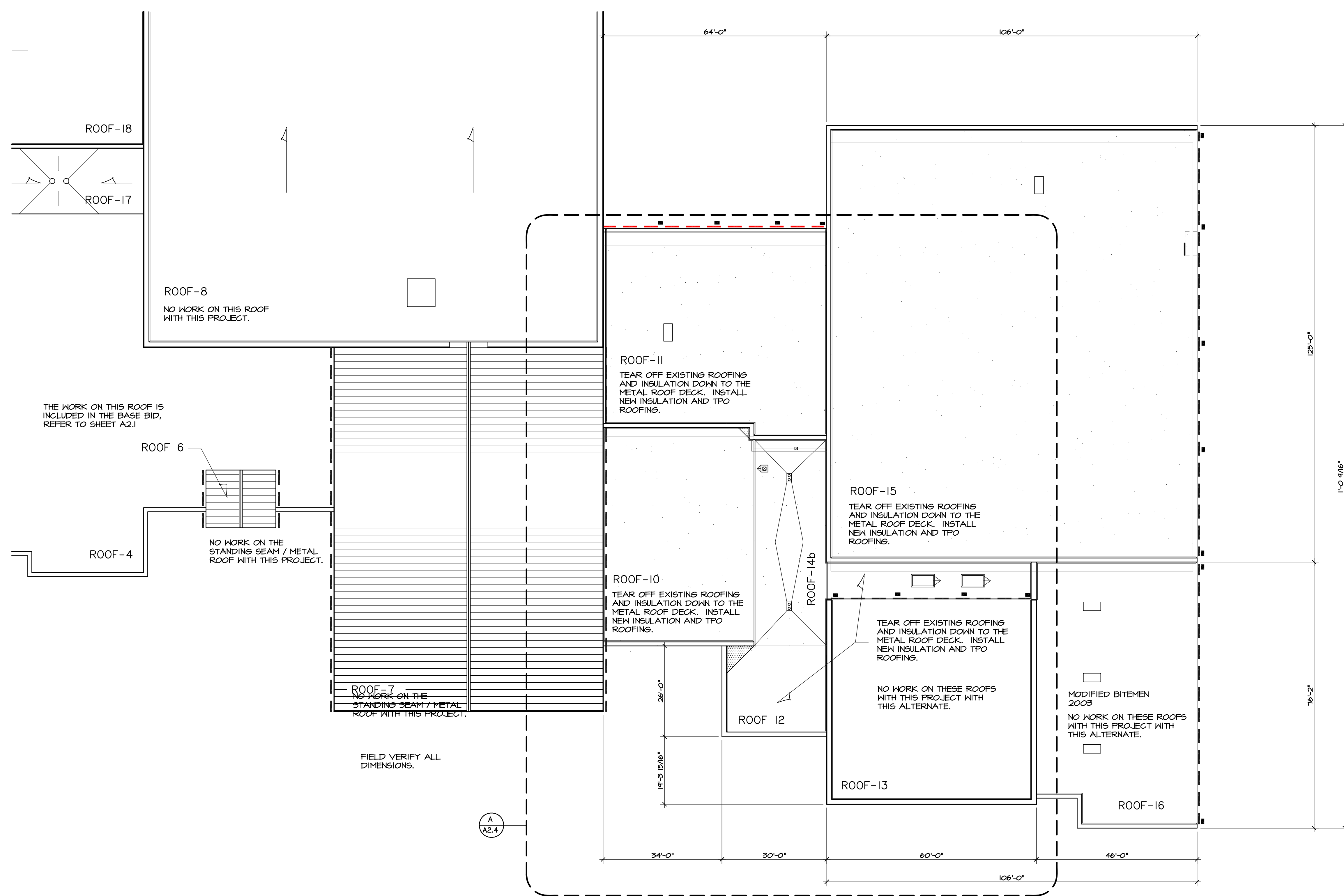


02/02/20

HANNAY & ASSOCIATES, ARCHITECTS
 1726 South Hillside, Wichita, Kansas, 67211
 Phone (316) 833-8865
 Fax (316) 834-1441

2020
RCJSHS - ReROOFING PROJECT
UNIFIED SCHOOL DISTRICT 323
 ROCK CREEK J-S HIGH SCHOOL -- 9355 FLUSH ROAD - FLUSH, KANSAS

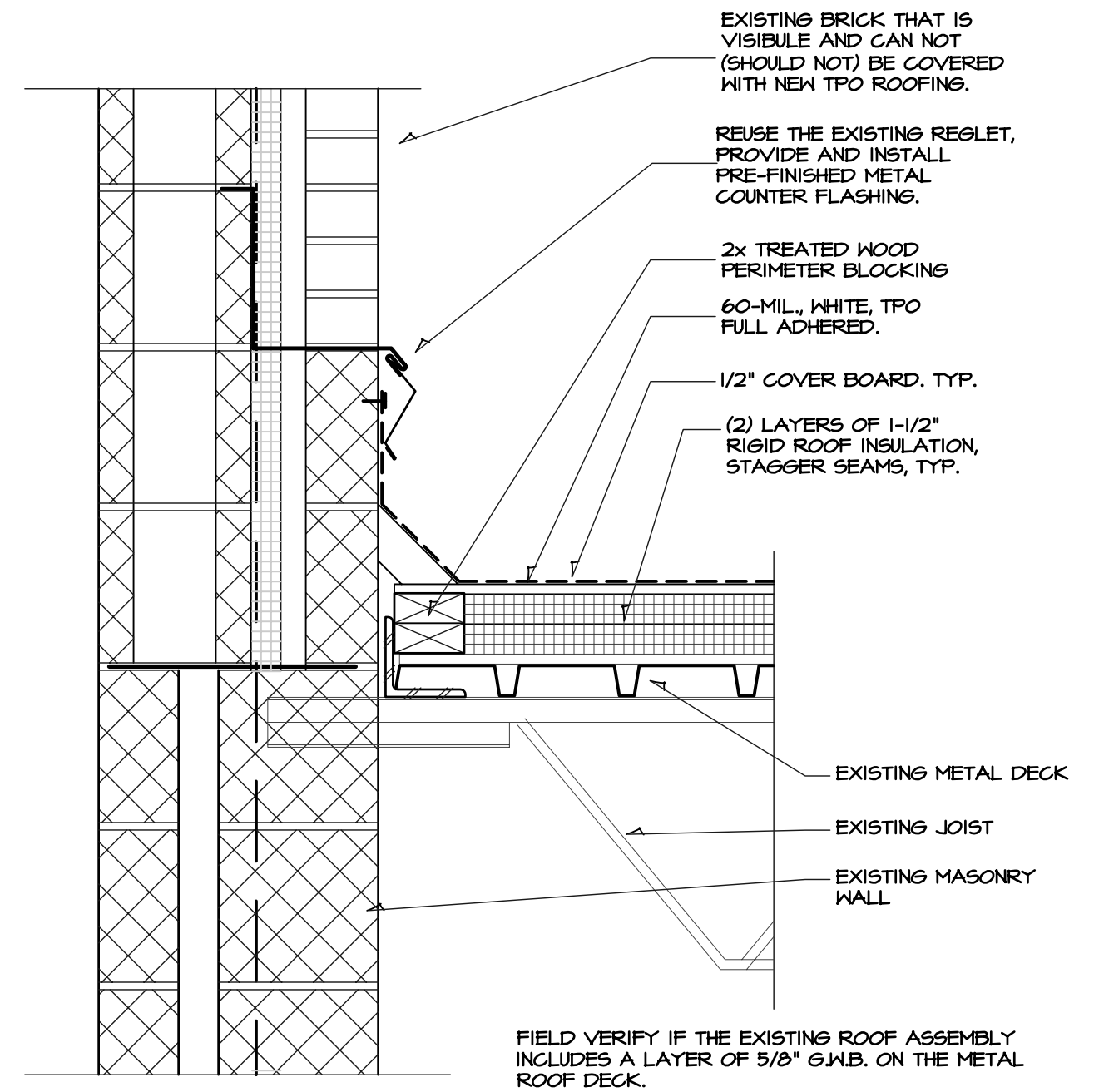


| DRAWINGS ISSUED | | | |
|-----------------|---------|-----------------|--------|
| NO. | DATE | ITEM | ISSUED |
| 2 | 1/17/20 | ISSUED FOR BIDS | |
| 1 | 1/13/20 | BOE REVIEW | |

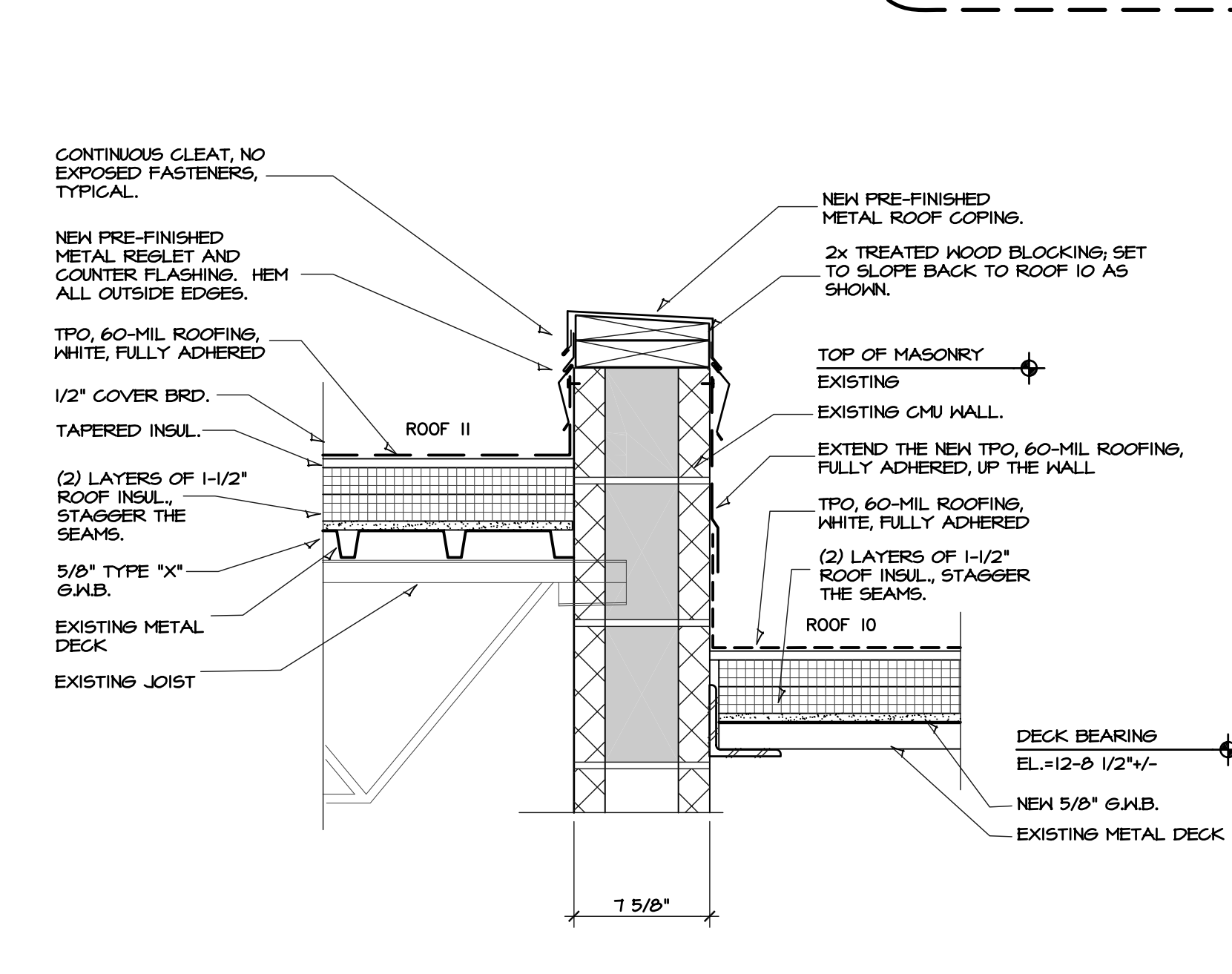
COMPUTER DRAWING
 2020\ROOF\323_A203.dwg

DATE: JANUARY 2020
 DRAWN BY: CH MH
 CHECKED BY: MRH

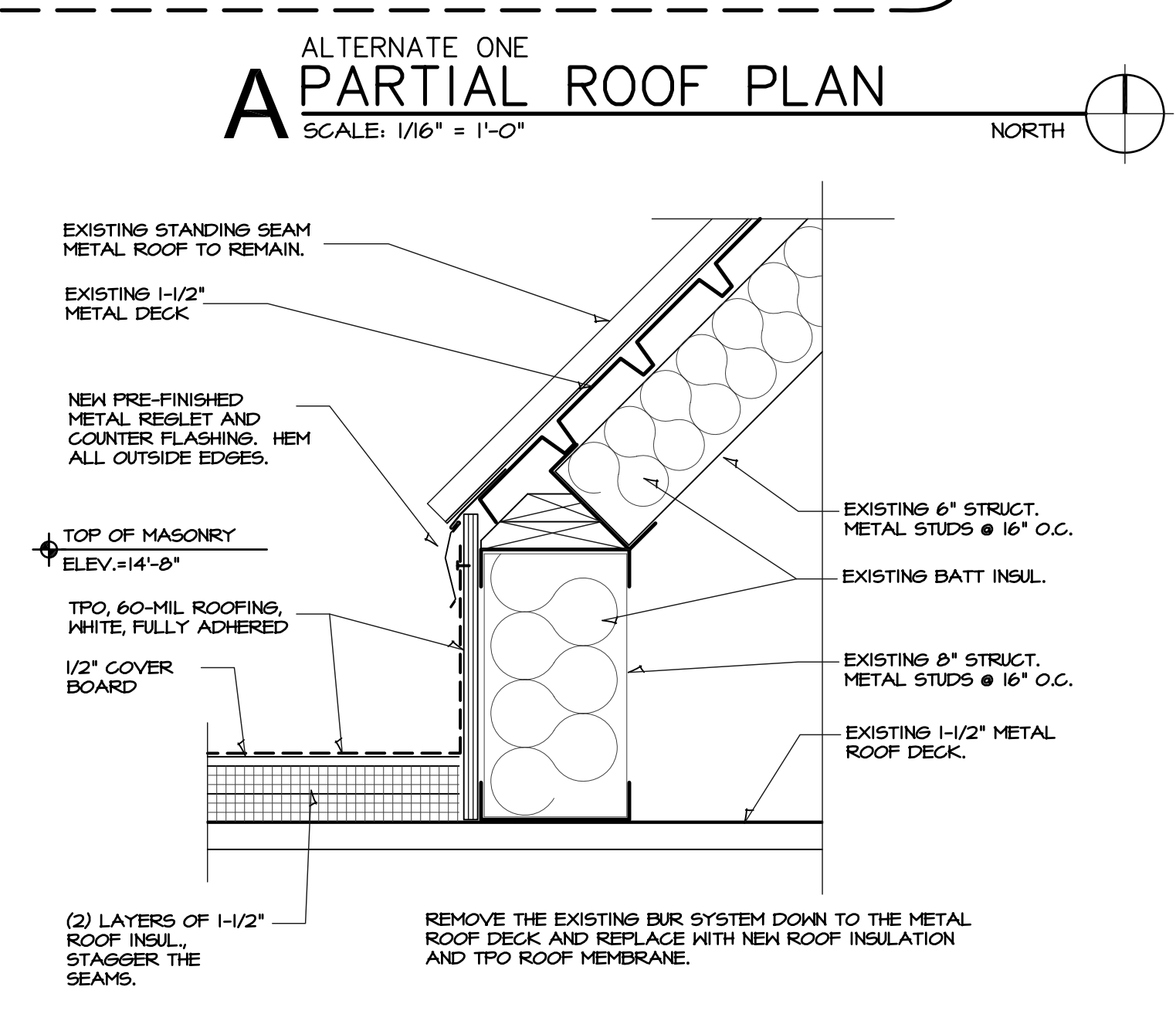
SHEET
A2.3
 OF - SHEETS



1 PARAPET WALL DETAIL
 SCALE: 1-1/2" = 1'-0"



2 PARAPET WALL DETAIL
 SCALE: 1-1/2" = 1'-0"



3 PARAPET WALL DETAIL
 SCALE: 1-1/2" = 1'-0"