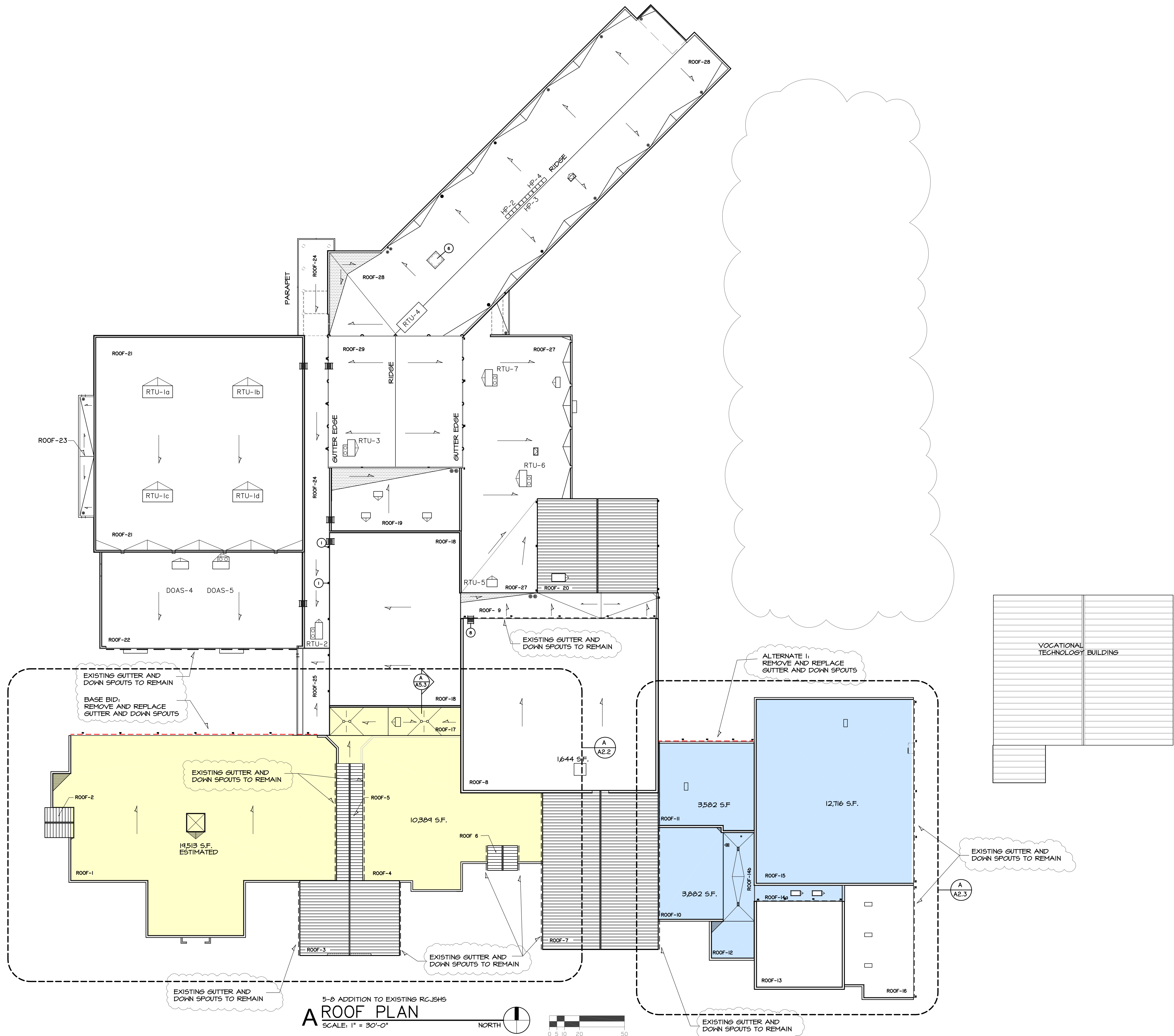




02/06/20

HANNEY & ASSOCIATES, ARCHITECTS
 1726 South Hillside, Wichita, Kansas, 67211
 Phone (316) 683-8985
 Fax (316) 684-1441



5-0 ADDITION TO EXISTING RCJSHS
A ROOF PLAN
 SCALE: 1" = 30'-0"

2020
 RCJSHS - ReROOFING PROJECT
 UNIFIED SCHOOL DISTRICT 323
 ROCK CREEK J-S HIGH SCHOOL -- 9355 FLUSH ROAD - FLUSH, KANSAS

DRAWINGS ISSUED		
NO.	DATE	ITEM ISSUED
3	2/6/20	ADDENDUM 1
2	1/17/20	ISSUED FOR BIDS
1	1/13/20	BOE REVIEW

COMPUTER DRAWING
 202\ROOF\323_201.dwg

DATE: JANUARY 2020
 DRAWN BY: CH MH CHECKED BY: MRH

SHEET
A2.1
 OF SHEETS