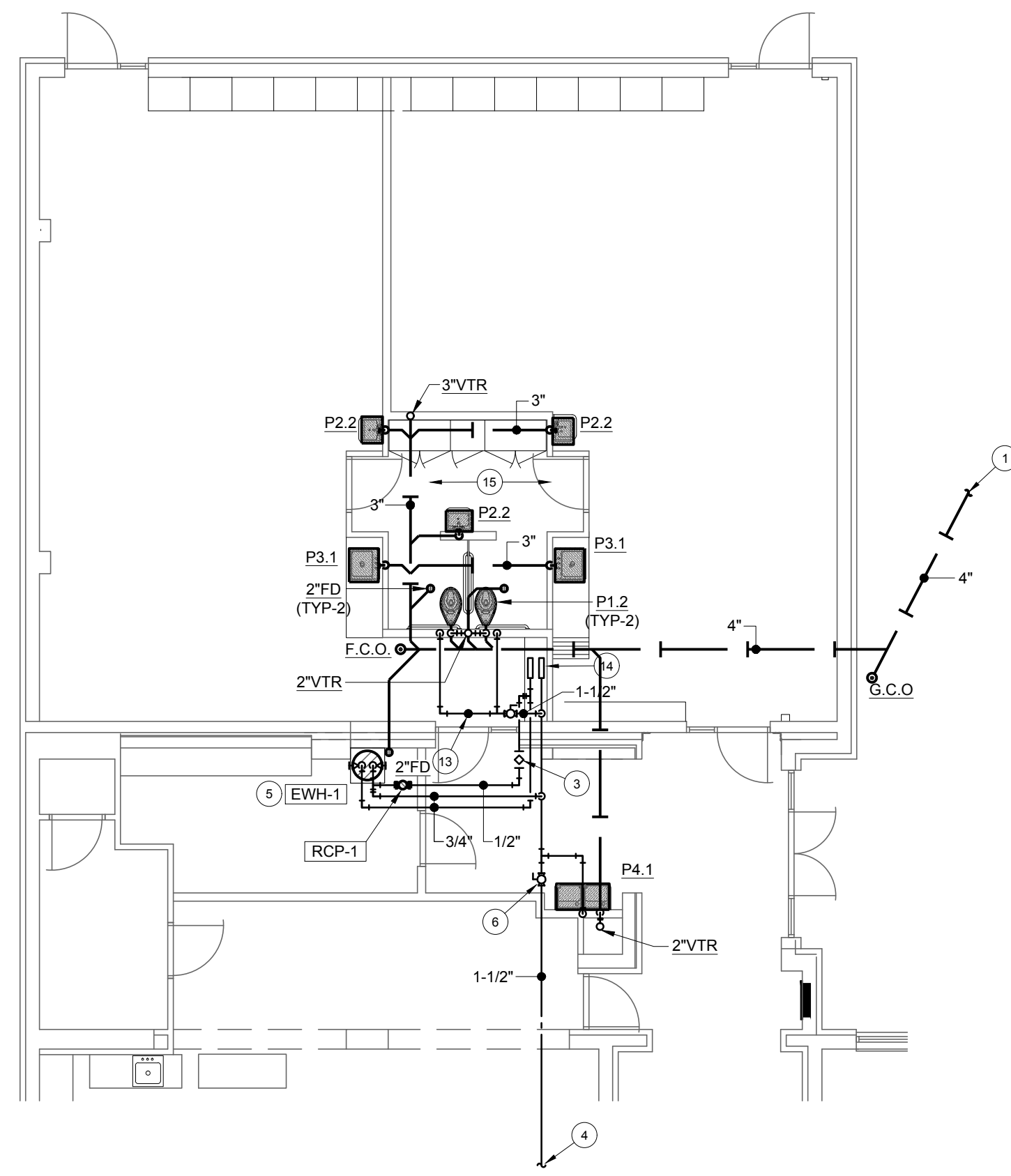
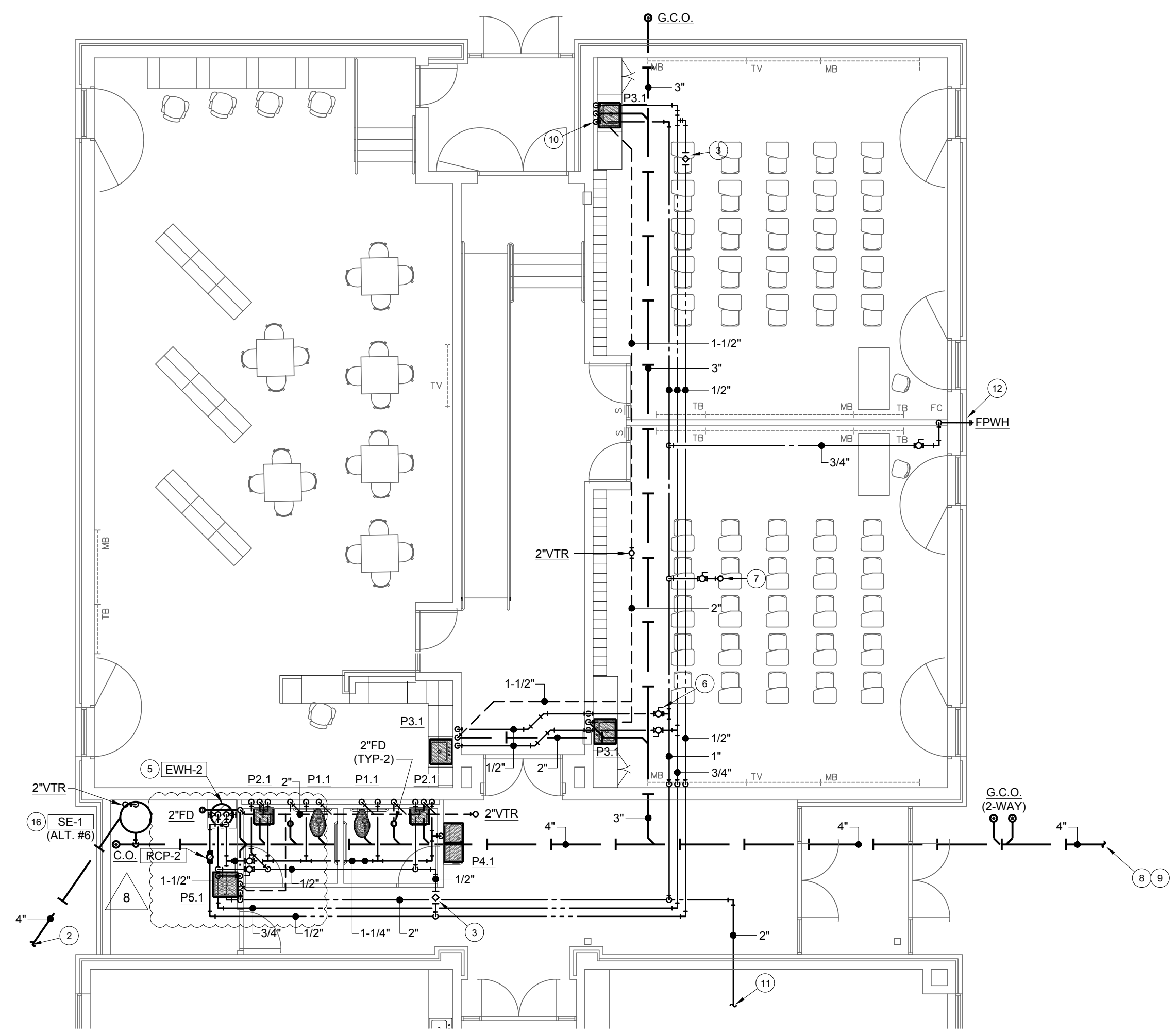


HANNEY & ASSOCIATES, ARCHITECTS
 1726 South Hillside, Wichita, Kansas, 67211
 Phone (316) 683-8965
 Fax (316) 684-1441
 www.haararchitects.com

2019
OXFORD ELEMENTARY SCHOOL
UNIFIED SCHOOL DISTRICT 358
 319 East College Street, Oxford, Kansas 67119



PLUMBING, WASTE, AND VENT PLAN (ALTERNATE #6)



PLUMBING, WASTE, AND VENT PLAN



PLAN NOTES:

- 1 EXTEND WASTE PIPING TO AREA SHOWN ON PLAN 'B'. FIELD VERIFY EXACT ROUTING.
- 2 WASTE PIPING EXTEND FROM AREA SHOWN ON PLAN 'A'. FIELD VERIFY EXACT ROUTING.
- 3 PROVIDE CIRCUIT SETTER. (SET @ 0.5 GPM)
- 4 EXTEND 1-1/2" CW PIPING TO EXISTING 2" OR LARGER CW PIPING AND CONNECT AS REQUIRED. PROVIDE BALL VALVE IN PIPING PRIOR TO CONNECTION TO EXISTING PIPING. COORDINATE PIPE ROUTE ABOVE EXISTING CEILINGS WITH G.C. PRIOR TO CONSTRUCTION.
- 5 SET WATER HEATER ON 4" CONCRETE PAD. CONNECT 3/4" HW / CW PIPING TO WATER HEATER PER MANUFACTURER RECOMMENDATIONS. PROVIDE BALL VALVES IN CONNECTING PIPE RISERS. EXTEND P&T RELIEF VALVE DOWN TO FLOOR DRAIN AND TERMINATE WITH AIR GAP.
- 6 PROVIDE BALL VALVE IN PIPING AS SHOWN. (TYPICAL)
- 7 EXTEND 3/4" CW PIPING UP THROUGH ROOF TO WOODFROE FREEZELESS ROOF HYDRANT (NO DRAIN LINE REQUIRED) MODEL SRH-MS AND CONNECT PER MANUFACTURER RECOMMENDATIONS.
- 8 EXTEND 4" WASTE PIPING TO EXISTING SANITARY SEWER MAIN ON SITE. CONTRACTOR TO VERIFY EXISTING SEWER PIPE INVERT PRIOR TO CONSTRUCTION. CONTACT ARCHITECT / G.C. / ENGINEER FOR FURTHER INSTRUCTION IF EXISTING PIPING DOES NOT HAVE SUFFICIENT DEPTH TO CONNECT NEW SEWER PIPING. REFER TO ARCHITECTURAL / CIVIL SITE PLAN FOR CONTINUATION.
- 9 REFER TO ARCHITECTURAL / CIVIL SITE PLAN FOR CONTINUATION.
- 10 DROP PIPING DOWN IN FURRED OUT WALL BEHIND CABINETS.
- 11 EXTEND 2" CW PIPING TO EXISTING 2" OR LARGER CW PIPING AND CONNECT AS REQUIRED. PROVIDE BALL VALVE IN PIPING PRIOR TO CONNECTION TO EXISTING PIPING. COORDINATE PIPE ROUTE ABOVE EXISTING CEILINGS WITH G.C. PRIOR TO CONSTRUCTION.
- 12 DROP 3/4" CW PIPING DOWN IN WALL AND TERMINATE THROUGH EXTERIOR WALL TO FPWH. MOUNT 18" A.F.G.
- 13 PROVIDE WATER HAMMER ARRESTOR ON CW PIPING AS SHOWN.
- 14 PROVIDE COPPER MANIFOLD ABOVE CEILING. EXTEND PEX PIPING FOR MANIFOLD DOWN IN WALL TO BELOW FLOOR AND ROUTE TO SINK(S) AND LAVATORY(S). ALL PEX RUNS ARE TO BE HOMERUNS FROM THE MANIFOLD TO FIXTURES. NO FITTINGS ALLOWED IN PEX RUNS. PROVIDE INDIVIDUAL SHUT-OFF VALVES FOR EACH PEX RUN AT THE MANIFOLD. INSULATE ALL ABOVE GROUND PEX PIPE WITH 1/2" ARMAFLEX INSULATION.
- 15 WASTE AND VENT PIPING SERVING THE SINK(S), LAVATORY(S), AND FLOOR DRAIN IN RESTROOM AREA IS SERVED BY COMBINATION WASTE AND VENT SYSTEM.
- 16 INSTALL SEWAGE EJECTOR PER MANUFACTURER INSTRUCTIONS. FIELD VERIFY INLET AND DISCHARGE ELEVATIONS WITH REQUIRED FLOW ELEVATIONS.

DRAWINGS ISSUED		
NO.	DATE	ITEM ISSUED
6	4/2/19	APPENDIX 3
1	8/1/19	ISSUED FOR BIDS
6	8/1/19	10% REVIEW
5	7/5/19	REVIEW
4	6/24/19	REVIEW
3	5/6/19	REVIEW
2	4/27/19	REVIEW
1	4/08/19	REVIEW

COMPUTER DRAWING

DATE: APRIL, 2019
 DRAWN BY: CHECKED BY:

SHEET
P1.1
 OF 1 SHEETS

