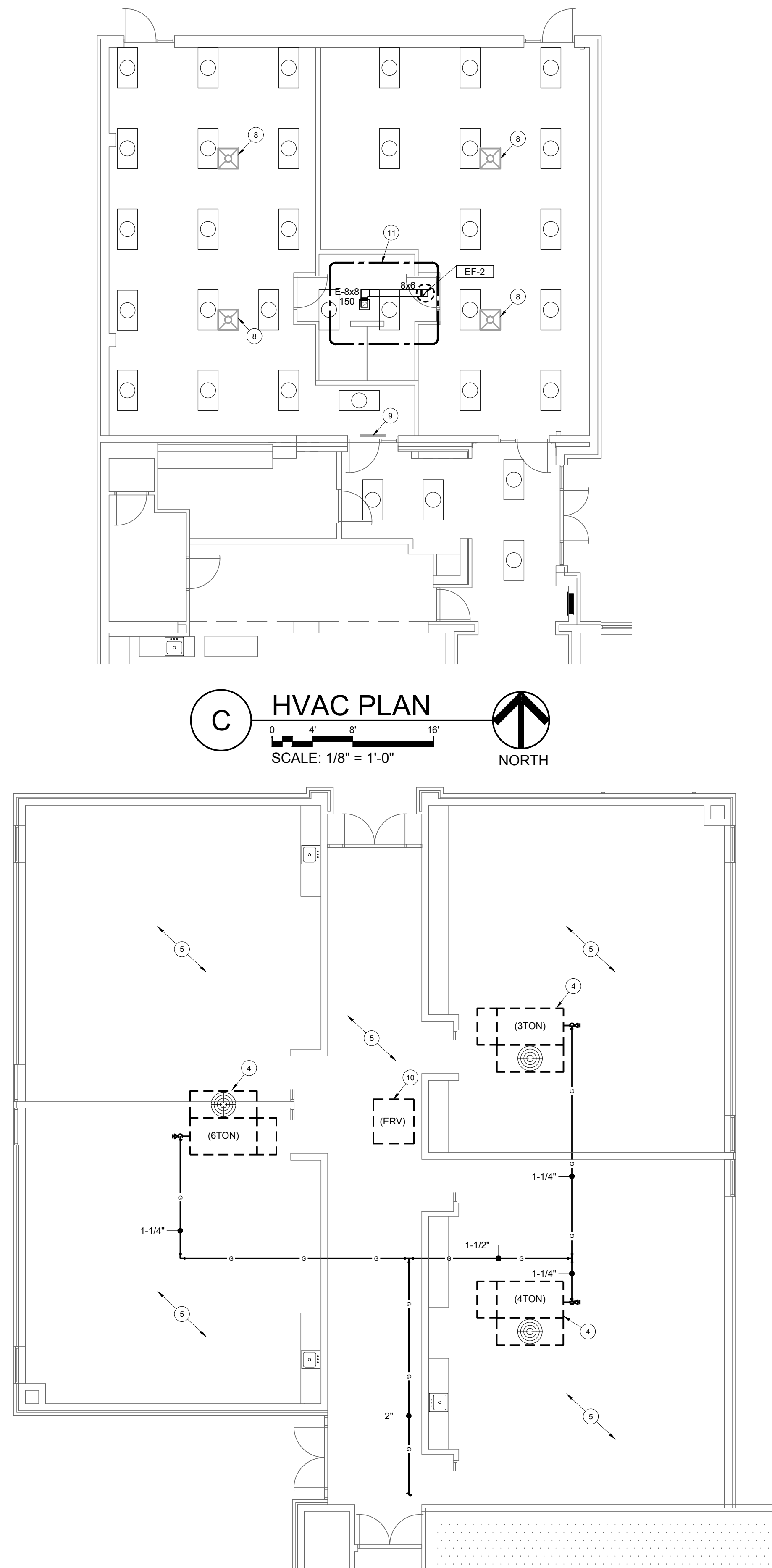
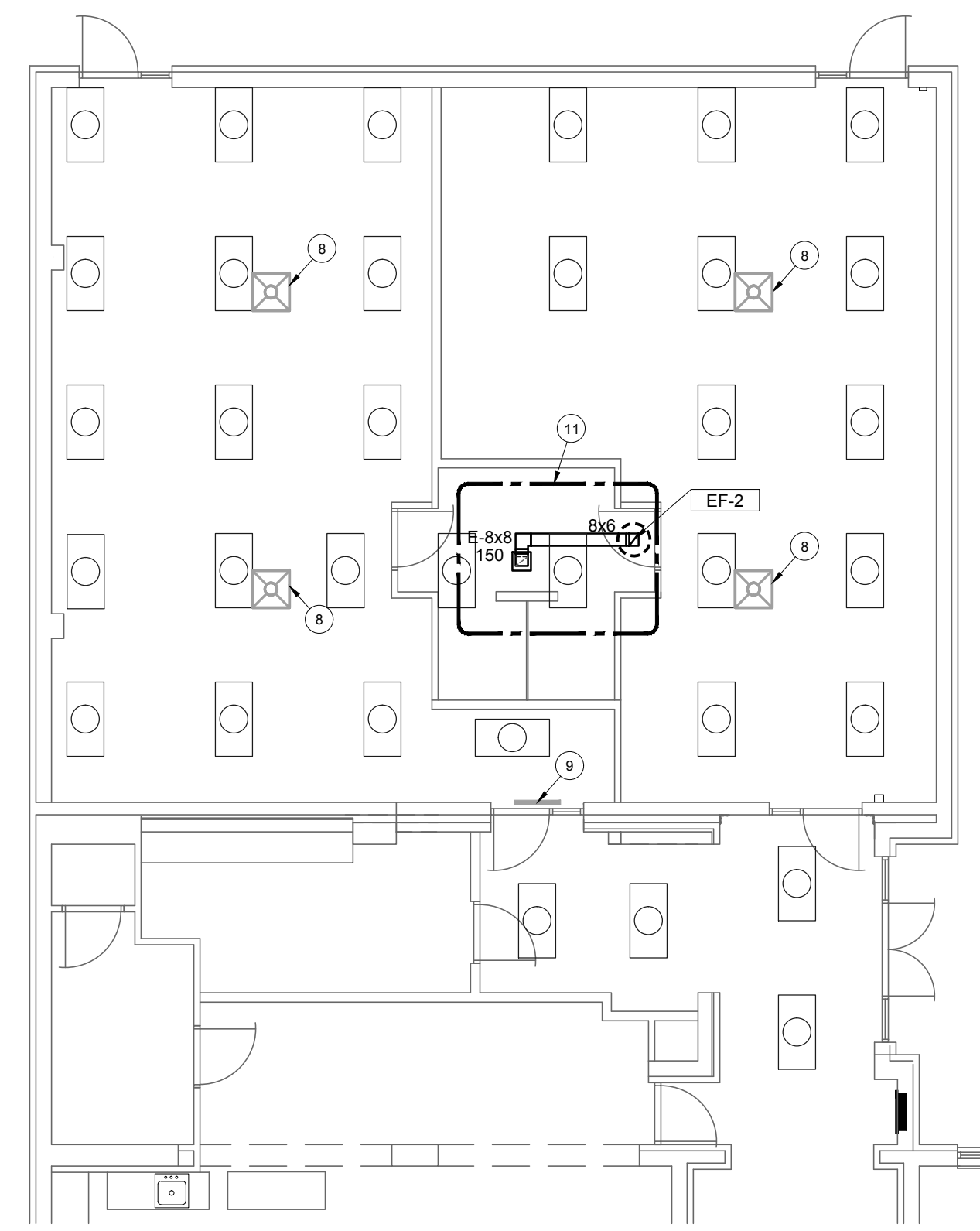


B HVAC PLAN
 SCALE: 1/8" = 1'-0"
 NORTH



A HVAC DEMO PLAN (ALTERNATE #7)
 SCALE: 1/8" = 1'-0"
 NORTH

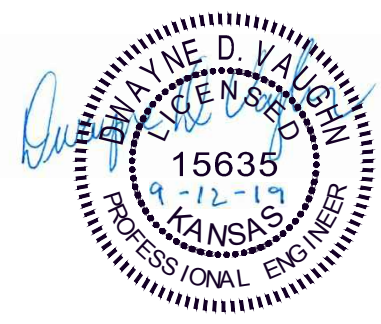
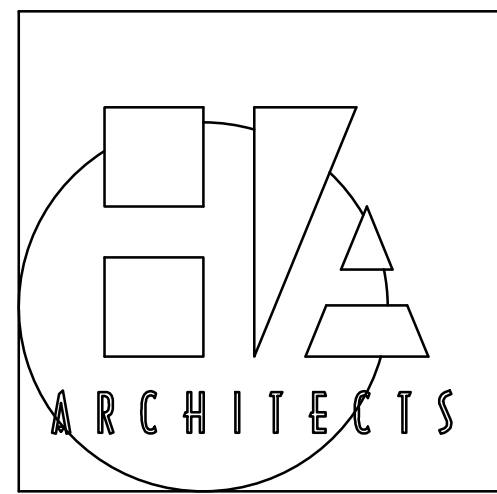


C HVAC PLAN
 SCALE: 1/8" = 1'-0"
 NORTH

PLAN NOTES:

- 1 REPLACE RTU AS PART OF ALTERNATE #7. REFER TO RTU SCHEDULE FOR NEW EQUIPMENT INFORMATION.
- 2 PROVIDE STRUCTURAL STEEL DUCT SHROUD TO PROTECT DUCT PENETRATION INTO SHELTER. REFER TO DETAIL ON STRUCTURAL SHEETS FOR ADDITIONAL INFORMATION.
- 3 PROVIDE TRANSITION ROOF CURB FOR INSTALLATION OF NEW ROOF TOP UNIT. CONNECT EXISTING GAS PIPING TO NEW UNIT AND CONNECT PER MANUFACTURERS RECOMMENDATIONS.
- 4 REMOVE EXISTING ROOF TOP UNIT AS PART OF ALTERNATE #7.
- 5 ALL EXISTING DUCTWORK, S.A. / R.A. GRILLES TO REMAIN IF ALTERNATE #7 IS ACCEPTED.
- 6 EXTEND GAS PIPING BACK TO EXISTING 4" GAS PIPING AND CONNECT. CONTRACTOR TO COORDINATE WITH LOCAL UTILITY TO DETERMINE IF EXISTING GAS METER & SERVICE LINE HAS CAPACITY FOR NEW ADDITIONAL LOAD = (390 MBH). PROVIDE NEW METER, REGULATOR, ETC. AS REQUIRED.
- 7 GAS PIPING LOCATED ON ROOF. PROVIDE MIRO SUPPORT FOR ALL GAS PIPING. INSTALL EVERY 10'-0" AND AT EVERY FITTING. ALL GAS PIPING ON ROOF TO BE PAINTED. (TYP.)
- 8 ALL DIFFUSERS LOCATED IN SPACE TO BE REUSED IN NEW WORK. COORDINATE EXACT LOCATION OF REUSED DIFFUSERS WITH NEW CEILING, LIGHTING, ETC.
- 9 EXISTING RETURN AIR GRILLE TO REMAIN. FIELD VERIFY WITH NEW CEILING.
- 10 REMOVE EXISTING ERV UNIT AND ALL ASSOCIATED CONTROLS. CAP ROOF CURB WEATHER TIGHT AS PART OF ALTERNATE #7.
- 11 PROVIDE EXHAUST FAN AS PART OF ALTERNATE #6. REFER TO EXHAUST FAN SCHEDULE FOR NEW EQUIPMENT INFORMATION.

PENETRATIONS THROUGH THE STORM SHELTER ENVELOPE LARGER THAN 3-1/2 SQUARE INCHES OR 2-1/2 INCHES IN DIAMETER. FOR SYSTEMS AND UTILITIES INSTALLED FOR ANY PURPOSE, SHALL BE CONSIDERED OPENINGS AND SHALL BE PROTECTED. REFER TO SHELTER PENETRATION DETAIL FOR ADDITIONAL INFORMATION.



HANNEY & ASSOCIATES, ARCHITECTS
 1726 South Hillside, Wichita, Kansas, 67211
 Phone (316) 683-8965
 Fax (316) 684-1441
 www.haararchitects.com

2019
OXFORD ELEMENTARY SCHOOL
UNIFIED SCHOOL DISTRICT 358
 319 East College Street, Oxford, Kansas 67119

DRAWINGS ISSUED		
NO.	DATE	ITEM ISSUED
6	4/2/19	APPENDIX 3
1	8/14/18	ISSUED FOR BIDS
6	8/1/18	10% REVIEW
5	7/5/18	REVIEW
4	6/24/18	REVIEW
3	5/6/18	REVIEW
2	4/27/18	REVIEW
1	4/08/18	REVIEW

COMPUTER DRAWING

DATE: APRIL, 2019
 DRAWN BY: CHECKED BY:

SHEET

M1.1

OF 1 SHEETS



19114.00-107