

FIXTURE SCHEDULE

MARK	FIXTURE	WATER				REMARKS	FURNISHED BY
		COLD CONN.	HOT CONN.	WASTE CONN.	VENT		
P-1	WATER CLOSET	1"	0	3"	2"	HANDICAP	P.C.
P-2	WATER CLOSET	1"	0	3"	2"		P.C.
P-3	LAVATORY	1/2"	1/2"	2"	1-1/2"	HANDICAP	P.C.
P-4	URINAL	3/4"	0	2"	2"	HANDICAP	P.C.
P-5	URINAL	3/4"	0	2"	2"		P.C.
P-6	LAVATORY	1/2"	1/2"	2"	1-1/2"	HANDICAP	P.C.
P-7	MOP SINK	1/2"	1/2"	3"	2"		P.C.
P-8	2 COMP SINK	1/2"	1/2"	2"	1-1/2"		P.C.
P-9	3 COMP SINK	1/2"	1/2"	3"	2"		P.C.
P-10	HAND SINK	1/2"	1/2"	2"	1-1/2"	HANDICAP	P.C.
P-11	ICE MAKER	1/2"	0				P.C.
P-12	WASHER BOX	1/2"	1/2"	2"	1-1/2"		P.C.
P-13	DRINKING FOUNTAIN	1/2"	0	2"	1-1/2"	HANDICAP	P.C.
P-14	HOSE BIBB	3/4"	3/4"				P.C.
P-15	ROOF HYDRANT	3/4"	0	2"			P.C.
P-16	SHOWER SINK			4"	2"		P.C.
P-17	SHOWER	1/2"	1/2"				P.C.
P-18	HANDICAP SHOWER	1/2"	1/2"			HANDICAP	P.C.
P-19	FLOOR SINK			4"	2"		P.C.
P-20	HOSE BIBB	3/4"					P.C.
P-21	2 COMP SINK	1/2"	1/2"	2"	1-1/2"		P.C.
P-22	TRENCH DRAIN			2"	2"		P.C.
P-23	SWIM SUIT DRYER			2"	1-1/2"		P.C.
P-24	TRENCH DRAIN			2"	2"		P.C.
P-25	TRENCH DRAIN			2"	2"		P.C.
P-26	TRENCH DRAIN			2"	2"		P.C.
P-26	TRENCH DRAIN			4"	2"		P.C.
P-27	TRENCH DRAIN			4"	2"		P.C.

PLUMBING FIXTURES SCHEDULE

Owner standard fixtures no equals.

- P-1 Kohler Highcrest K-4302 16 1/2" high, elongated, white floor mounted water closet with Zurn WS1 1.5 GPF Flush Valve. Church 295C White elongated open front seat less cover.
- P-2 Kohler Wellcome K-4350 15" high, elongated, white floor mounted water closet with Zurn WS1 1.5 GPF Flush Valve. Church 295C White elongated open front seat less cover.
- P-3 Kohler Chesapeake K1730 4" center 20"x18-1/4" Lavatory White with Kohler 15198-4RA-CP Single Lever Faucet, 4" C.C. Dearborn 750 offset grid drain, Dearborn 507 1-1/4" P-trap, Brasscraft CR1912AC Supply kit, Trubro 102W hot/cold wrap, Zurn Z-1231 Concealed Arm Carrier.
- P-4 Kohler Bardon K4960-ET .5GPF Wall Hung Urinal with Zurn AquaSense Zer6003AV-CPM Valve, Zurn 1221 Hanger Plate.
- P-5 Kohler Bardon K4960-ET .5GPF Wall Hung Urinal with Zurn AquaSense Zer6003AV-CPM Valve, Zurn 1221 Hanger Plate.
- P-6 Just USIF-ADA-16 Stainless steel round lavatory undermount with overflow. Grohe 32710-001 Single Lever Faucet, Dearborn 760W 1-1/4" P-trap, Brasscraft CR1912AC Supply kit, Trubro 102W hot/cold wrap
- P-7 Fiat MSB-2424 Molded Stone Mop Basin, Fiat 830 AA RCP Service Sink Faucet With wall brace and pail hook.
- P-8 Just DL-1933-A-GR S.S. Double compartment Sink 19"x33" self rimming with Delta 190 faucet, Just-Basket Strainer, Dearborn 510 1-1/2" P-trap, Brasscraft CR1920AC Supply kit.
- P-9 (3)Just USX 1615-A 16"x16x10.5 S.S. Single compartment Sink 16"x16" undermount with (2) Delta 26C3133 faucet, Just-Basket Strainer, Dearborn 510 1-1/2" P-trap, Brasscraft CR1920AC Supply kit.
- P-10 Just USIL-ADA-1815-A-GR S.S. Sink undermount complete one hole center one hole right with Delta 710WFDHF faucet and strainer, Dearborn 510 1-1/2" P-trap, Brasscraft CR19C Angle stop.
- P-11 Sioux Chief OX Box Ice Maker Box with Watts 1/2" 007 backflow preventor.
- P-12 Guy Gray T-200 Metal Washer box with valves and 2" drain.
- P-13 Halsey Taylor HTHB-HVRGRN8BL-NT bi level water cooler, with bottle filling station, brushed Stainless steel, Dearborn 510 1-1/2" P-trap, Brasscraft CR19C angle stop.
- P-14 Woodford B22 hot cold hydrant with chrome box.
- P-15 Woodford RHY-2 Roof Hydrant
- P-16 Shower Drain Mifab FS1530-184-1—69-83-Z
- P-17 Delta 10000 Shower Valve, Delta T-13220 Shower Trim
- P-18 Delta 10000 Shower Valve, Delta T-13220 Shower Trim, Delta T-13020 Diverter valve, Alson 462 Hand shower, Alson 495DS hose, Alson 4980 Supply Elbow, Alson 4900 Vacuum Breaker, Proflow PFG18FS Grab Bar, Kohler K422 Hand Shower Holder.
- P-19 Floor Sink Zurn ZN1900-P 12x12 floor sink w/NB frame & grate.
- P-20 Woodford Model 68 Hvdrant
- P-21 Not used
- P-22 Schluer Kerdi Brushed Stainless Steel perforated drain 36"
- P-23 Dearborn 510 1-1/2" P-Trap
- P-24 Schluer Kerdi Brushed Stainless Steel perforated drain 60"
- P-25 Schluer Kerdi Brushed Stainless Steel perforated drain 70"
- P-26 Schluer Kerdi Brushed Stainless Steel perforated drain 48"
- P-27 Zurn ZN1920-P 16x16 4" pipe floor sink w/NB frame & grate

PLUMBING GENERAL NOTES:

1. THE PLUMBING CONTRACTOR SHALL FIELD VERIFY ALL EXISTING JOB CONDITIONS PRIOR TO STARTING WORK, ORDERING EQUIPMENT, FABRICATION OF MATERIALS, ETC.
2. THE PLUMBING CONTRACTOR SHALL COMPLY AND INSTALL ALL WORK IN ACCORDANCE TO INTERNATIONAL PLUMBING CODE, AND ALL CITY, COUNTY AND STATE CODES.
3. THE PLUMBING DRAWINGS ARE DIAGRAMMATIC AND ARE INTENDED TO SHOW APPROXIMATE LOCATION OF EQUIPMENT AND PIPING. EXACT LOCATION OF FIXTURES, EQUIPMENT, ETC. SHALL BE COORDINATED WITH WORK OF OTHER TRADES.
5. DO NOT ROUTE PIPING ABOVE ELECTRICAL PANELS, COORDINATE WITH ELECTRICAL CONTRACTOR.
6. FIELD VERIFY ALL EXISTING UTILITIES BEFORE STARTING WORK.
7. PROVIDE ALL EQUIPMENT AND FIXTURES WITH ISOLATING VALVES LOCATED CONVENIENTLY, USE ONLY FULL FLOW BALL VALVES.
8. ALL WASTE PIPING SHALL MAINTAIN A SLOPE OF 1/4" PER FOOT.
9. SUBMIT SHOP DRAWINGS ON EACH PIECE OF EQUIPMENT, PLUMBING FIXTURES, PIPE INSULATION, ETC. FOR REVIEW AND APPROVAL.
10. SUPPORT ALL PIPING AND ANCHOR TO BUILDING STRUCTURE PER CODE.
11. PLUMBING CONTRACTOR SHALL BE RESPONSIBLE FOR REMOVAL AND DISPOSAL OF HIS MATERIAL AND TRASH.
12. PLUMBING CONTRACTOR SHALL BE RESPONSIBLE FOR ALL PERMITS FOR HIS WORK.
13. PLUMBING CONTRACTOR SHALL COORDINATE GAS, SEWER AND WATER SERVICE WITH UTILITIES AND PAY FOR ASSOCIATED FEES AND METER CHARGES.
14. PLUMBING CONTRACTOR SHALL COORDINATE HIS WORK WITH OWNER TO AVOID SHUTDOWNS.
15. ALL MATERIAL SHALL BE NEW AND OF BEST QUALITY.
16. PROVIDE 12" AIR CHAMBER AT EACH FIXTURE FOR THE HOT AND COLD WATER.
17. ALL PIPING SHALL BE TESTED AND INSPECTED BEFORE COVERING UP.
18. PLUMBING CONTRACTOR SHALL GUARANTEE ALL EQUIPMENT, MATERIAL AND WORKMANSHIP FURNISHED BY HIM AND SHALL BE FREE FROM DEFECT, SHOULD ANY SUCH DEFECT APPEAR WITHIN ONE (1) YEAR FROM DATE OF ACCEPTANCE OF THE INSTALLATION SAME SHALL BE REPAIRED OR REPLACED AT NO COST TO THE OWNER.
19. PLUMBING CONTRACTOR SHALL PROVIDE OWNER WITH ONE (3) RING BINDER WITH PLUMBING FIXTURES, OPERATION AND MAINTENANCE MANUALS.

MATERIAL SPECIFICATIONS:

1. ALL WASTE & VENT PIPING SHALL BE SCH. 40 PVC PIPE WITH DWV FITTINGS.
2. ALL UNBURIED DOMESTIC WATER PIPING SHALL BE TYPE "L" HARD COPPER. AT CONTRACTOR'S OPTION MEGA PROGRESS FITTINGS MAY BE USED. AT CONTRACTOR'S OPTION PEX TUBING MAY BE USED.
3. ALL BURIED DOMESTIC WATER PIPING SHALL BE TYPE "K" SOFT COPPER. BURIED LINES SHALL HAVE NO JOINTS OR BE SILVER SOLDERED.
4. ALL GAS PIPING SHALL BE STEEL SCH. 40 BLACK PIPE. WELD PIPE LARGER THAN 2". PROVIDE COATED STEEL PIPE WITH WRAPPED JOINTS IF BURIED. IF LOCATED ON ROOF PROVIDE PATE PRS-1 OR EQUAL ROOF SUPPORTS. ALL GAS PIPING ON ROOF MEDIUM PRESSURE, BELOW ROOF LOW PRESSURE.
6. INSULATE ALL HOT AND COLD WATER WITH 1" THICK ARMAFLEX OR FIBERGLASS INSULATION. UP TO 2" AND 1-1/2" ABOVE 2". PROVIDE HEAT TRAPS ON HOT WATER HEATERS THAT DO NOT CIRCULATE. WHERE WATER PIPING IS RUN ABOVE FLOOR IT SHALL BE RUN ON WARM SIDE OF INSULATION.
7. HOT WATER FLUE SHALL BE TYPE "B" VENT
8. VERIFY GAS EQUIPMENT SIZING WITH HVAC CONTRACTOR
9. DOMESTIC WATER SERVICE MAY BE SCH. 40 PVC.
10. USE METALLIC PIPE IN FIRE RATED WALLS.
11. WASTE & VENT PIPE IN R.A. PLENUM MUST BE ONE OF THREE METHODS. C.P.V.C. SCH 80 WITH FLAME SPREAD 25 AND SMOKE INDEX OF 50 OR CAST IRON OR WRAPPED BY A CERTIFIED INSTALLER OF THERMAL CERAMIC'S PLENUM WRAP +. OR APPROVED EQUAL. PROVIDE GAS SHUT OFF VALVES, UNIONS AND DRIP LEGS TO ALL GAS EQUIPMENT.

PLUMBING SYMBOL SCHEDULE

MARK	DESCRIPTION	MARK	DESCRIPTION
	SANITARY SEWER		FLOOR DRAIN
	PLUMBING VENT LINE		CLEANOUT
	DOMESTIC COLD WATER LINE		GAS VALVE
	DOMESTIC HOT WATER LINE		BALL VALVE
	DOMESTIC TEMPERED WATER LINE		CHECK VALVE
	DOMESTIC HOT WATER RECIRCULATING		VENT THROUGH ROOF
	NATURAL GAS LINE		WALL HYDRANT (FREEZE PROOF)
	STEAM LINE		ROOF DRAIN PIPING

CP1,2 CIRCULATING PUMP Armstrong H51B 23 GPM 16' H.D. 1/4 H.P. 115/1/60. Provide With 3 D valve. Shut off valves and unions. Provide with aquastat.

HW-1,2,3 A.O. Smith BTXL 100, 75 gallon 100,000 BTU with P&T and concentric flue adapter

HW-4&5 E.E. SPEX3512TEE 3.5 KW 29 amps 120/1/60

Floor Drain Zurn ZN415-6S floor drain w/sqr strainer and Sure Seal SS3509 Trap Guard

Floor Sink Zurn ZN1900-P 12x12 floor sink w/NB frame & grate

Cleanout- (Interior) Zurn ZN-1400 C.I. Floor Cleanout with adjustable N.B. top.

Cleanout- (Exterior) Zurn Z-1400 C.I. Floor Cleanout with C.I. top.

Wall Cleanout (Interior) Zurn Z-1468 access cover and c/o plug

Shower Drain Mifab FS1530-184-1—69-83-Z

Watts LF009 3" Reduced Pressure Zone Backflow preventor.

Zurn Z101CR 20" roof drain 10: pipe. With underdeck clamp and roof sump receiver.

PLUMBING PLAN NOTES:

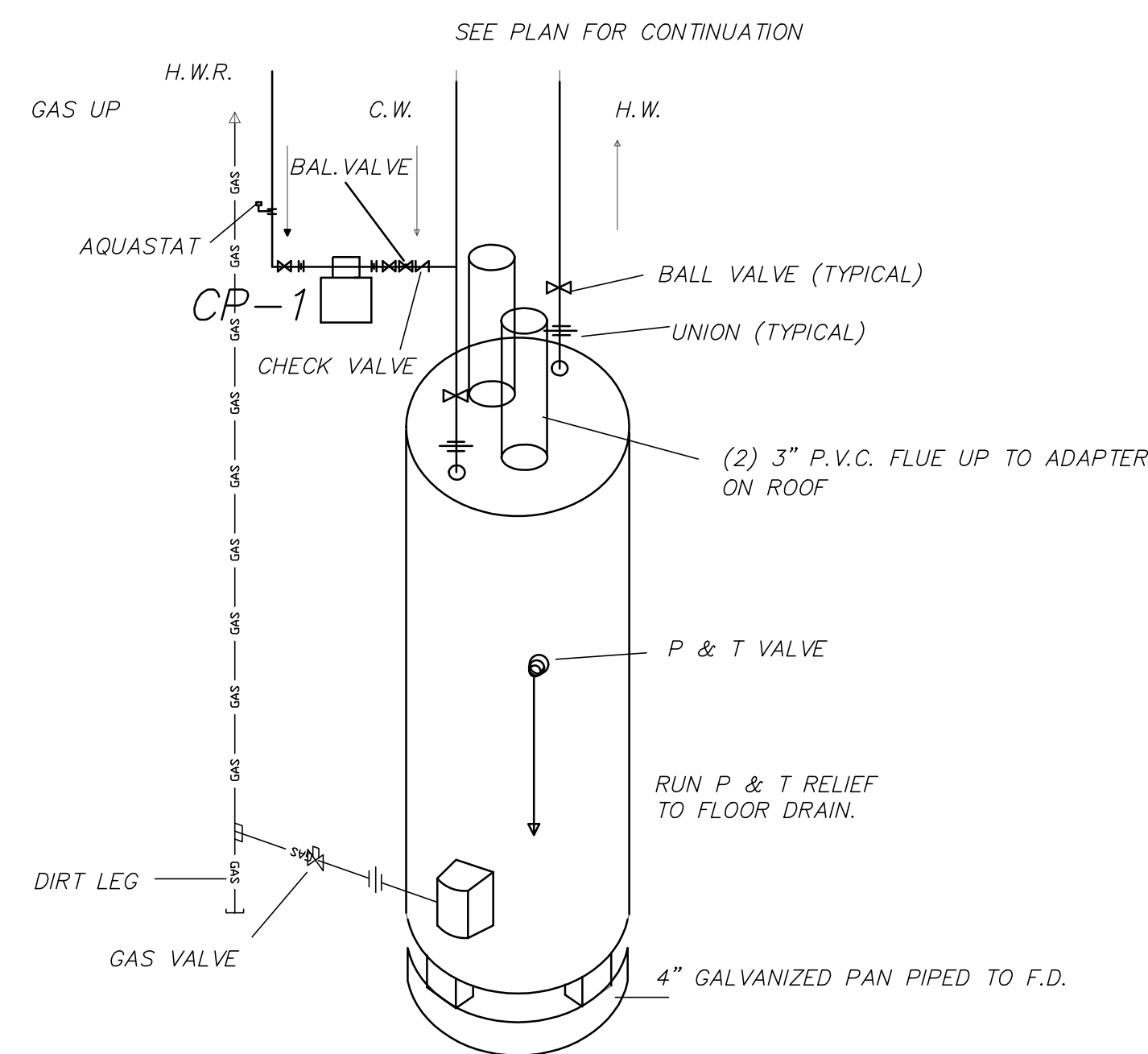
- REMOVE ALL EXISTING PLUMBING, CAP BELOW FLOOR FIELD VERIFY EXACT LOCATION.
- TIE INTO EXISTING SANITARY SEWER FIELD VERIFY EXACT LOCATION.
- SPRINKLER CONTRACTOR TO MOVE EXISTING SPRINKLER MAIN, RISER, AND WATER METER FIELD VERIFY EXACT LOCATION.
- WATER UNDERGROUND TO BAR
- P.C. TO NOTIFY GAS UTILITY OF GAS LOAD AND PAY ALL FEES.
- SEE STEAM DETAIL SHEET

PLAN REVIEW NOTES:

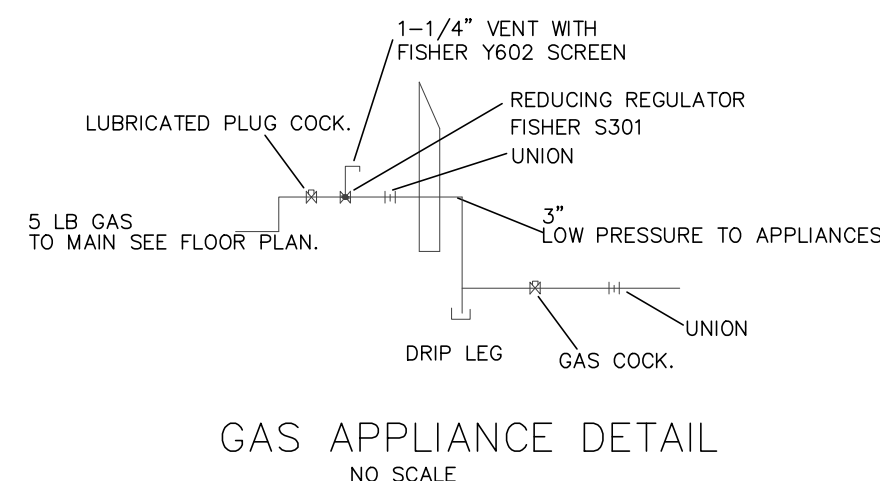
- GREASE TRAP PER PLAN REVIEW NOTE 32
- FIXTURE AMENDED PER PLAN REVIEW NOTE 19

ADDEMDA 4

- CHANGE TRENCH DRAIN



WATER HEATER PIPING DIAGRAM
NO SCALE



GAS APPLIANCE DETAIL
NO SCALE



HANNEY & ASSOCIATES, ARCHITECTS
1726 South Hillside, Wichita, Kansas, 67218
Phone (316) 853-8665
Fax (316) 864-1441

2021 GENESIS HEALTH CLUBS
SOUTHRIDGE MALL
 1111 East Army Post Road
 Des Moines, Iowa 50315



DRAWINGS ISSUED			
NO.	DATE	ITEM	ISSUED
12	5/9/22	ADDENDA #4	
11	4/24/22	ADDENDA #3	
10	3/25/22	CODE REVISIONS	
9	2/11/22	PERMIT SET	
8	1/25/22	CHECK SET	
7	12/15/21	CHECK SET	
6	9/24/21	CHECK SET	
5	8/27/21	SITE PLAN REVIEW	
4	7/21/21	UDRB SUBMITTAL	
03	7/08/21	MILESTONE DEV. PLAN	
02	5/25/21	CONCEPT. DEV. PLAN	
01	3/20/21	CONCEPT. DEV. PLAN	

COMPUTER DRAWING

DATE: AUGUST 2021
DRAWN BY: CHECKED BY:
RJB NEM

SHEET

MP1.2

OF SHEETS

MECHANICAL CONCEPTS L.L.C.
14801 TIMBERLAKE RD.
WICHITA, KANSAS 67230
PHONE 316-733-2718
FAX 877-839-4680
EMAIL
RICHARD@MECHANICALCONCEPTS.COM