



04/20/22  
**HANNEY & ASSOCIATES, ARCHITECTS**  
 1726 South Hillside, Wichita, Kansas 67211  
 Phone (316) 683-8985  
 Fax (316) 684-1441

**2022 GENESIS HEALTH CLUBS**  
**SOUTHBRIDGE MALL**  
 1111 East Army Post Road  
 Des Moines, Iowa 50315



DRAWINGS ISSUED			
NO.	DATE	ITEM	ISSUED
10	4/20/22	ADDENDUM #2	
9	2/1/22	PERMIT SET	
8	1/25/22	CHECK SET	
7	12/15/21	CHECK SET	
6	9/24/21	CHECK SET	
5	8/21/21	SITE PLAN REVIEW	
4	1/21/21	UDRB SUBMITTAL	
3	1/08/21	MILESTONE DEV. PLAN	
2	5/25/21	CONCEPT DEV. PLAN	
1	3/20/21	CONCEPT DEV. PLAN	

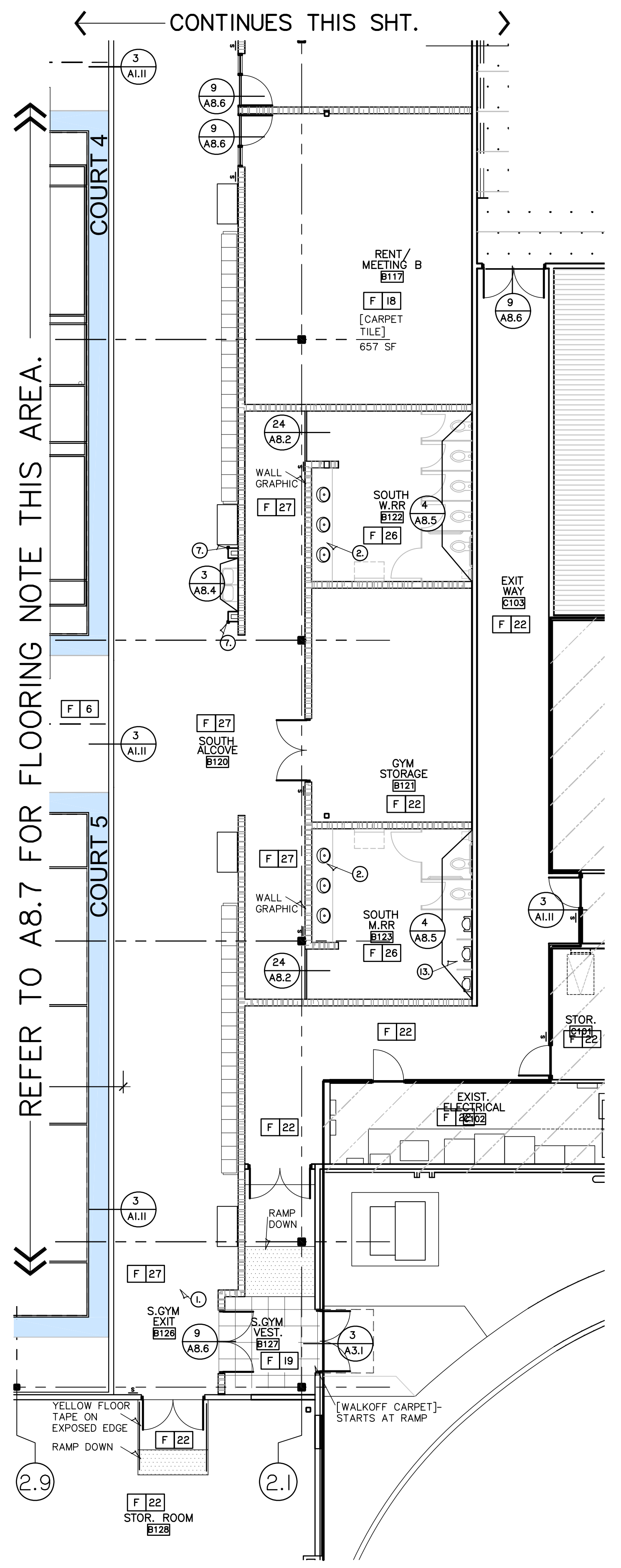
COMPUTER DRAWING  
 DMS\_A808.dwg

DATE: AUGUST 2021  
 DRAWN BY: CHECKED BY:  
 MH, CH, DH, TH, TC MRRH

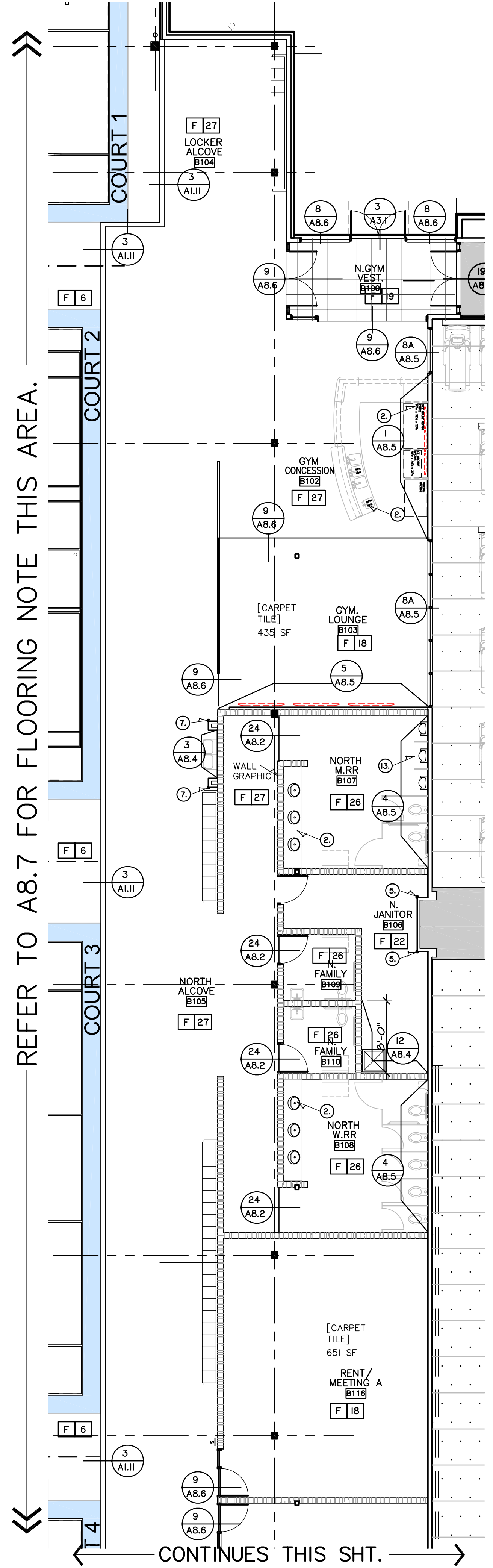
SHEET  
**A8.11**  
 OF SHEETS

- # GENERAL FINISH NOTES**
- FIELD VERIFY ALL DIMENSIONS PRIOR TO ORDERING MATERIAL. UPDATE QUANTITIES ACCORDINGLY.
  - MATERIAL REPEATS WERE NOT FACTORED INTO THE LENGTHS OF FINISH MATERIALS.
  - CARPET TO TILE TRANSITION: SCHLUTER RENO TK, RADIUS WHR APPLICABLE. MATERIAL: MTI
  - TILE TO RESINOUS TRANSITION: SCHLUTER RAMP. 2 1/2" WIDTH, SATIN ANODIZED
  - RESINOUS TO SEALED CONCRETE TRANSITION: SCHLUTER RAMP. 3 1/2" WIDTH, SATIN ANODIZED
  - OUTSIDE CORNERS CRITICAL NOTE: WHERE APPLICABLE, HOLD WALLCOVERING FROM OUTSIDE EDGE. REFER TO DETAIL 5B/A6.4 FOR EXTENT OF WALL TILE TO RUN VERTICALLY ALONG OUTSIDE CORNERS.
  - SLOPE FLOORS TO DRAIN: SLOPES SHALL NOT BE STEEPER THAN 1:50 ON CROSS SLOPES AND 1:48 WITHIN SHOWER STALL.
  - DEMO SHEETS INDICATE AREAS WHERE SUBFLOOR LEVEL IS RECESSED.
  - TILE THICKNESS VARY. TILE PATTERNS WITH DIFFERENT TILE THICKNESS, THE INSTALLATION SHALL ALIGN FLUSH WITH THICKEST TILE.
  - TILE INSTALLER: REFER TO SHEET A8.2 FOR TCNA TILE GUIDELINES. COMPLY WITH NOTED DETAILS. APPLY WHERE APPLICABLE
  - RESINOUS INSTALLER: REFER TO SHEET A8.2 FOR GUIDELINES. COMPLY WITH NOTED DETAILS. APPLY WHERE APPLICABLE.

- MARK KEYED FINISH NOTES**
- TRANSITION: SCHLUTER, PROFILE FOR RESILIENT FLOORING, VINPRO-T. 1"W, ABGB FINISH
  - EXTEND FINISH FLOORING BENEATH CABINETRY.
  - RAISED CONCRETE PAD, COORDINATE SIZE OF PAD WITH OWNER PROVIDED WASHER AND DRYER EQUIPMENT. FINISH PAD: MAT'L; F22
  - DASH/DOT LINE SHOWS EXTENT OF FRP, DETAIL 12/A8.4. INCLUDE TRIM ACCESSORIES. REMAINING WALLS: PAINT
  - CORNER GUARD AND END WALL GUARDS, REFER TO DETAIL 29/A8.6
  - MIRROR REFER TO DETAIL 9/A8.4. HEIGHT OF SPORTS RUBBER BASE 24" UNO.
  - STAINLESS STEEL CORNER GUARDS FULL HEIGHT OF WALL. REF TO DETAIL 30/A8.6
  - POINT SHOWN DIMENSIONED. GUIDE FOR LAYOUT OF RADIUS OF TILEWORK. POINT DOES NOT REPRESENT A FINISH MATERIAL.
  - DASH LINE: REPRESENTS METAL TRIM MAT'L MTI3, SCHLUTER-DECO. RADIUS. DTL 16/A8.6
  - LOCKER ROOM HEADER WITHIN LOCKER ROOM RESTROOM: REF TO 5B/A6.4- TILE INFO: 6/A8.4
  - LOCKER ROOM HEADER WITHIN LOCKER ROOM : REFER TO 5A/A6.4- TILE INFO: 5/A8.5
  - FAMILY RESTROOM HEADER : REFER TO 5A/A6.4-TILE INFO: 6/A8.5
  - EPOXY GROUT ON WALL
  - CORNER GUARD AT LOCKER ROOM TOWEL DROP: MATERIAL: MT5
  - TILEWORK: REFER TO DETAIL 7/A8.4 AT LAVATORY WALLS. SOFFIT: W7
  - COVERED FLOOR TRENCH DRAIN, REF TO MECH. LENGTH TO SPAN AS SHOWN: A/A8.10
  - METAL ACCENT TILE: MATERIAL FII A. AND FII B. DETAIL 2/A8.3 FOR INSTALL.
  - METAL ACCENT TILE: MATERIAL FII A. (I) ROW X 24" LENGTH.
  - OPEN FLOOR TROUGH DRAIN. REFER TO MECH FOR DRAIN WITHIN TROUGH.



BALL COURT TLT. RMS.  
**B FLOOR FINISH PLAN**  
 SCALE: 1/8"=1'-0" NORTH



BALL COURT TLT. RMS.  
**A FLOOR FINISH PLAN**  
 SCALE: 1/8"=1'-0" NORTH