

04/20/22
HANNEY & ASSOCIATES ARCHITECTS
 1728 South Hillside, Wichita, Kansas 67211
 Phone (316) 653-8985
 Fax (316) 684-1441

2022 GENESIS HEALTH CLUBS
SOUTHBRIDGE MALL
 1111 East Army Post Road
 Des Moines, Iowa 50315

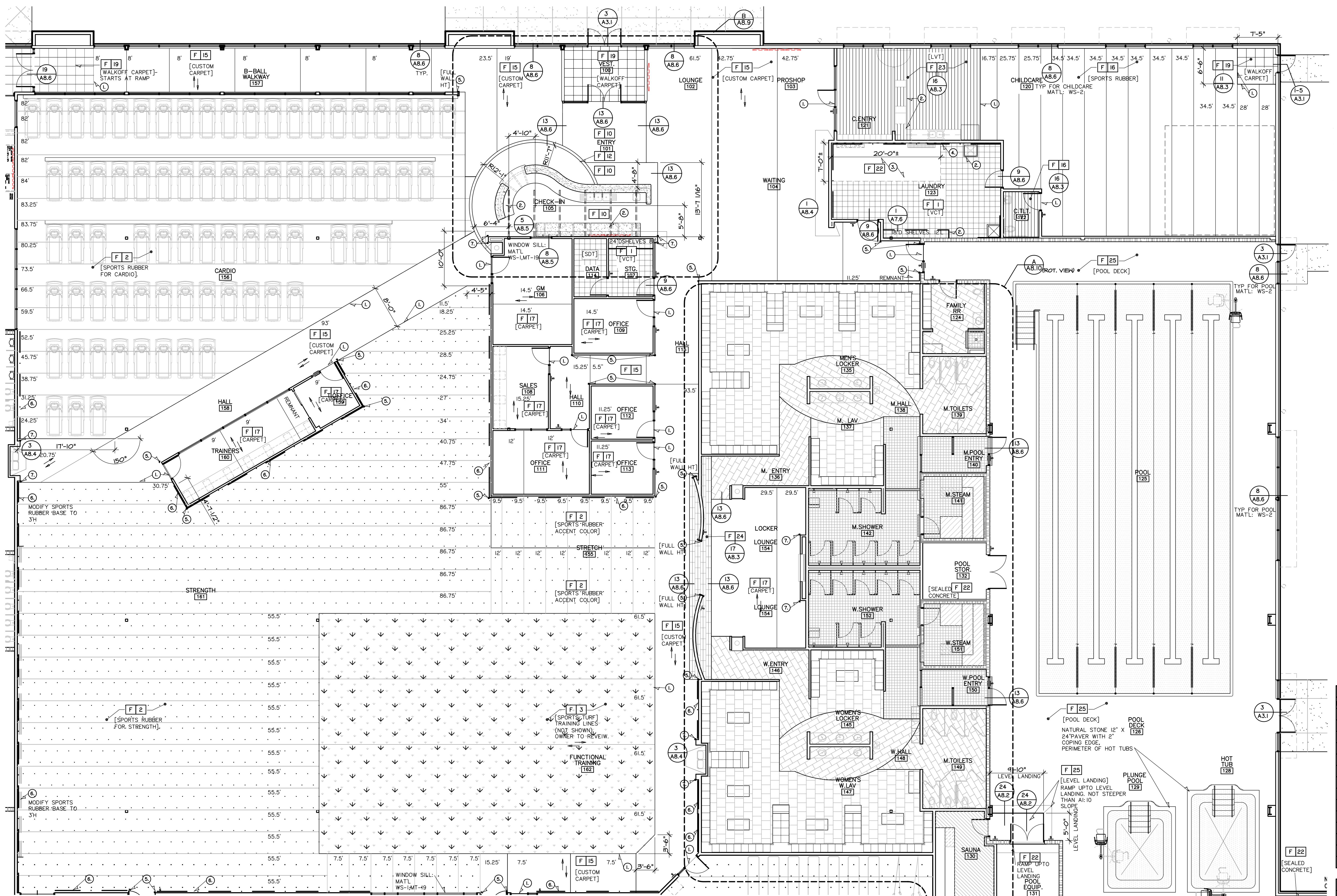


DRAWINGS ISSUED			
NO.	DATE	ITEM	ISSUED
10	4/20/22	ADDENDUM #2	
4	2/1/22	PERMIT SET	
8	1/25/22	CHECK SET	
7	12/15/21	CHECK SET	
6	9/24/21	CHECK SET	
5	8/21/21	SITE PLAN REVIEW	
4	7/21/21	UDRB SUBMITTAL	
3	1/08/21	MILESTONE DEV. PLAN	
2	5/25/21	CONCEPT DEV. PLAN	
1	3/20/21	CONCEPT DEV. PLAN	

COMPUTER DRAWING
 DMS_A808.dwg

DATE: AUGUST 2021
 DRAWN BY: CHECKED BY:
 MH, CH, DH, TH, TC MRH

SHEET
A8.8
 OF SHEETS



REFER TO A8.9 FOR CONT. OF FLR. FINISHES.

GENERAL FINISH NOTES

- FIELD VERIFY ALL DIMENSIONS PRIOR TO ORDERING MATERIAL. UPDATE QUANTITIES ACCORDINGLY.
- MATERIAL REPEATS WERE NOT FACTORED INTO THE LENGTHS OF FINISH MATERIALS.
-

MARK KEYED FINISH NOTES

- TRANSITION: SCHLUTER, PROFILE FOR RESILIENT FLOORING, VINPRO-T, 1"W, ABGB FINISH
- EXTEND FINISH FLOORING BENEATH CABINetry.
- RAISED CONCRETE PAD, COORDINATE SIZE OF PAD WITH OWNER PROVIDED WASHER AND DRYER EQUIPMENT. FINISH PAD: MAT'L; F22
- DASH/DOT LINE SHOWS EXTENT OF FRP, DETAIL 12/A8.4. INCLUDE TRIM ACCESSORIES. REMAINING WALLS: PAINT
- CORNER GUARD AND END WALL GUARDS, REFER TO DETAIL 29/A8.6
- MIRROR REFER TO DETAIL 9/A8.4. HEIGHT OF SPORTS RUBBER BASE 24" UNO.
- STAINLESS STEEL CORNER GUARDS FULL HEIGHT OF WALL. REF TO DETAIL 30/A8.6

GENESIS HEALTH CLUBS
A FLOOR FINISH PLAN
 SCALE: 1/8"=1'-0"
 NORTH

