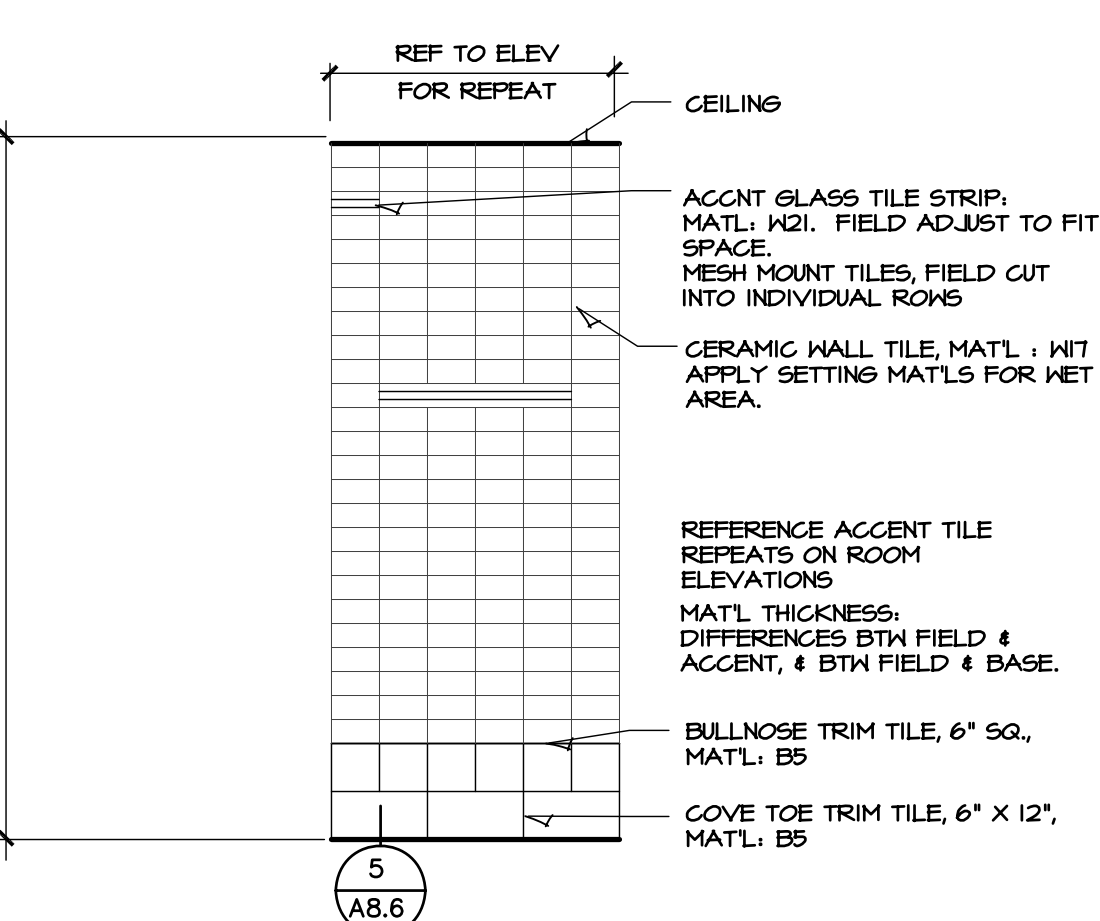
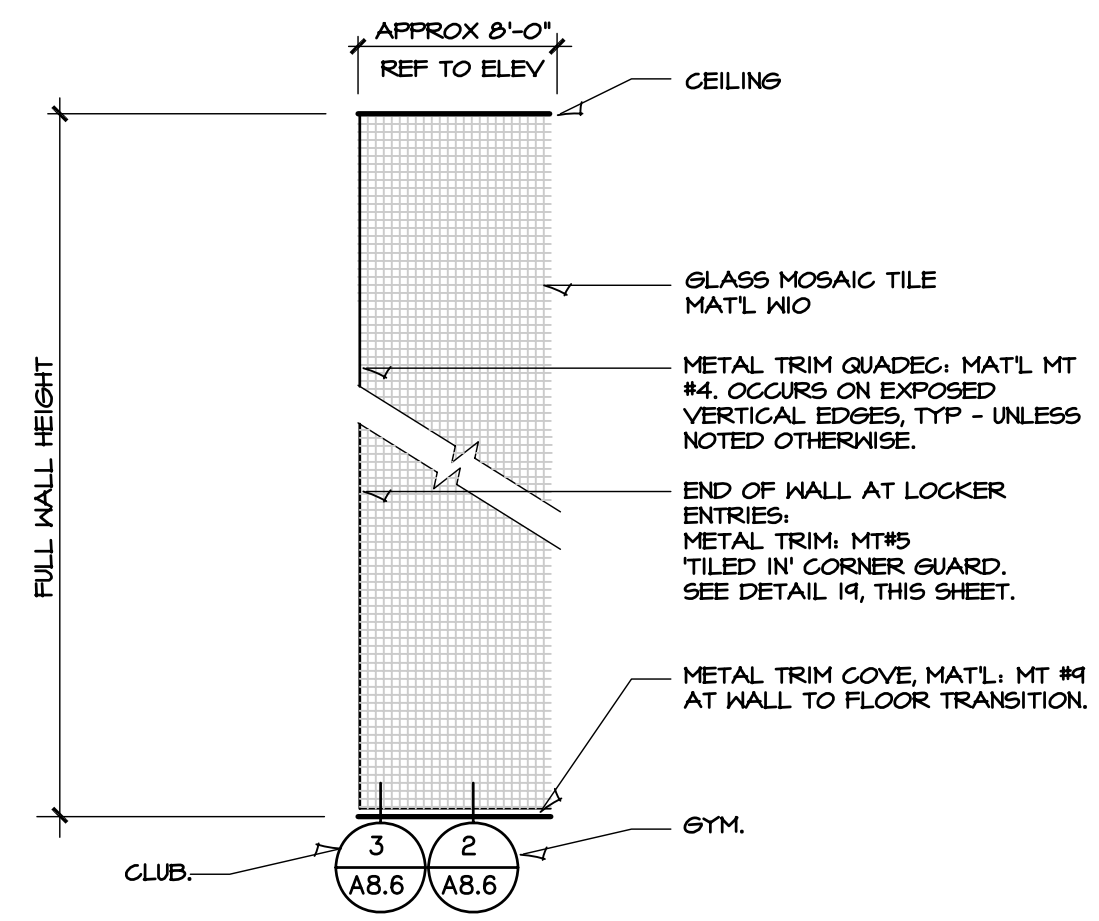
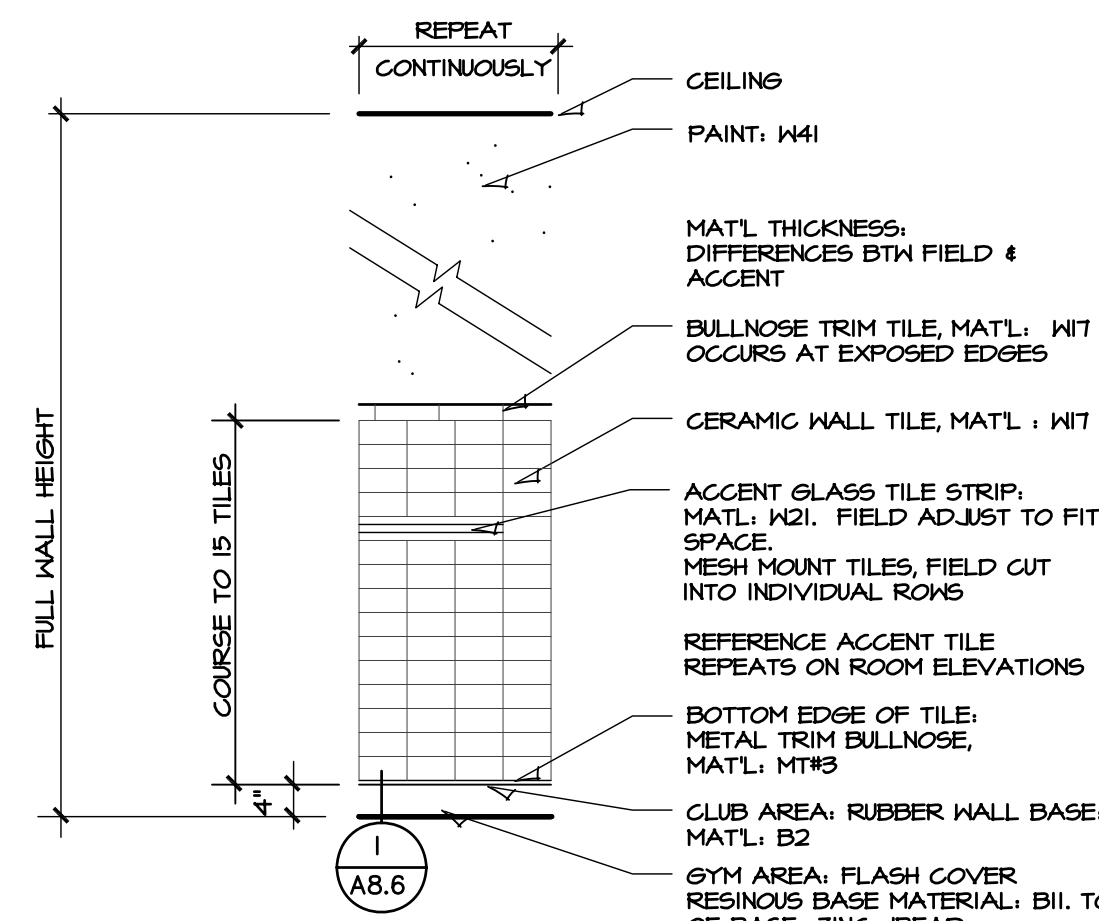
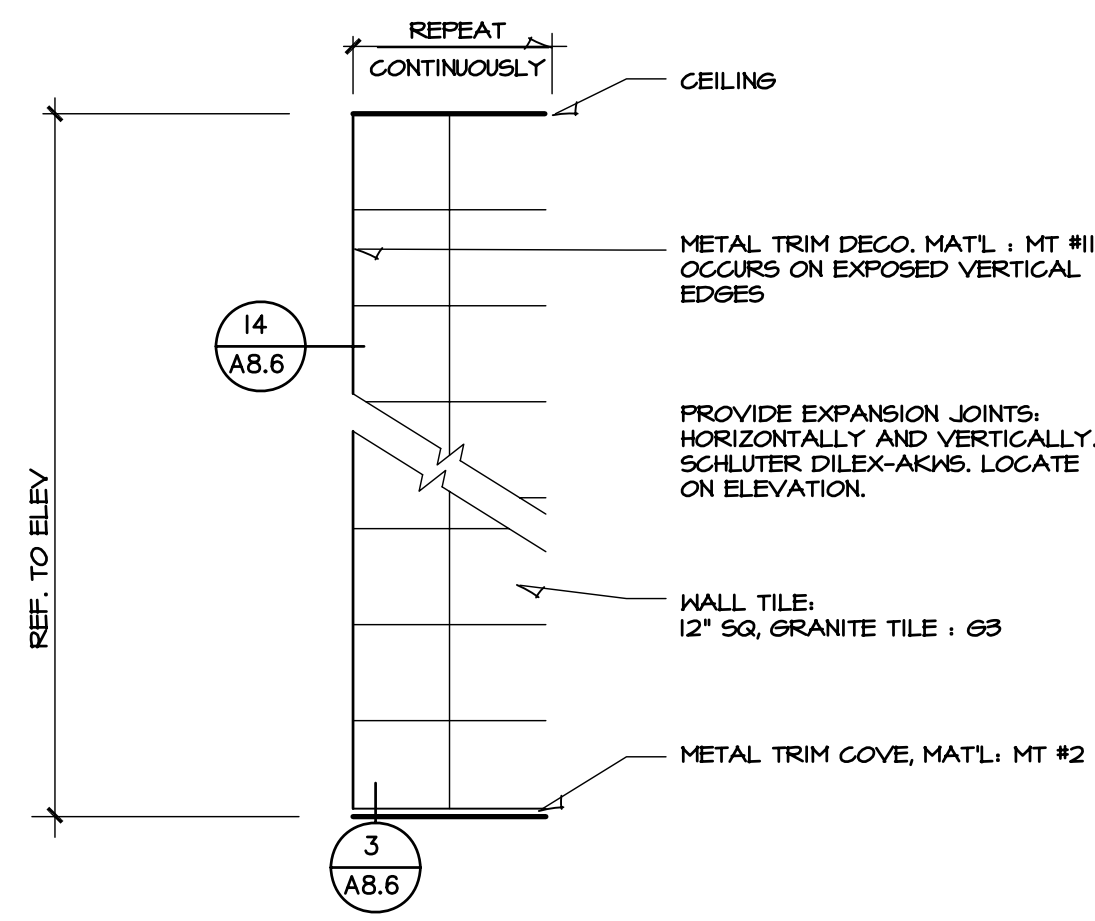


# WALL PATTERN DETAILS

FINISH MATERIAL ID



SYM	DESCRIPTION	SHEET
□	GRID REFLECTS GRAPHIC REPRESENTATION OF INSTALL. GRID CONFIGURATION OF LINES VARY. SPECIFIED TILE SIZE TAKES PRECEDENCE. MATL. VARIES.	
F#	FLOOR MATERIAL	A8.1
B#	BASE MATERIAL	A8.1
ST #	STAIR MATERIAL	A8.1
SP-#	SPECIALTY MATERIAL	A8.1
G#	GRANITE MATERIAL	A8.1
MT #	METAL TRIM MATERIAL	A8.1
W#	WALL MATERIAL	A8.1
C#	CEILING MATERIAL	A8.1
M#	MILLWORK MATERIAL	A8.1
WS#	WINDOWSILL MATERIAL	A8.1
SM #	SETTING MATERIAL	A8.1

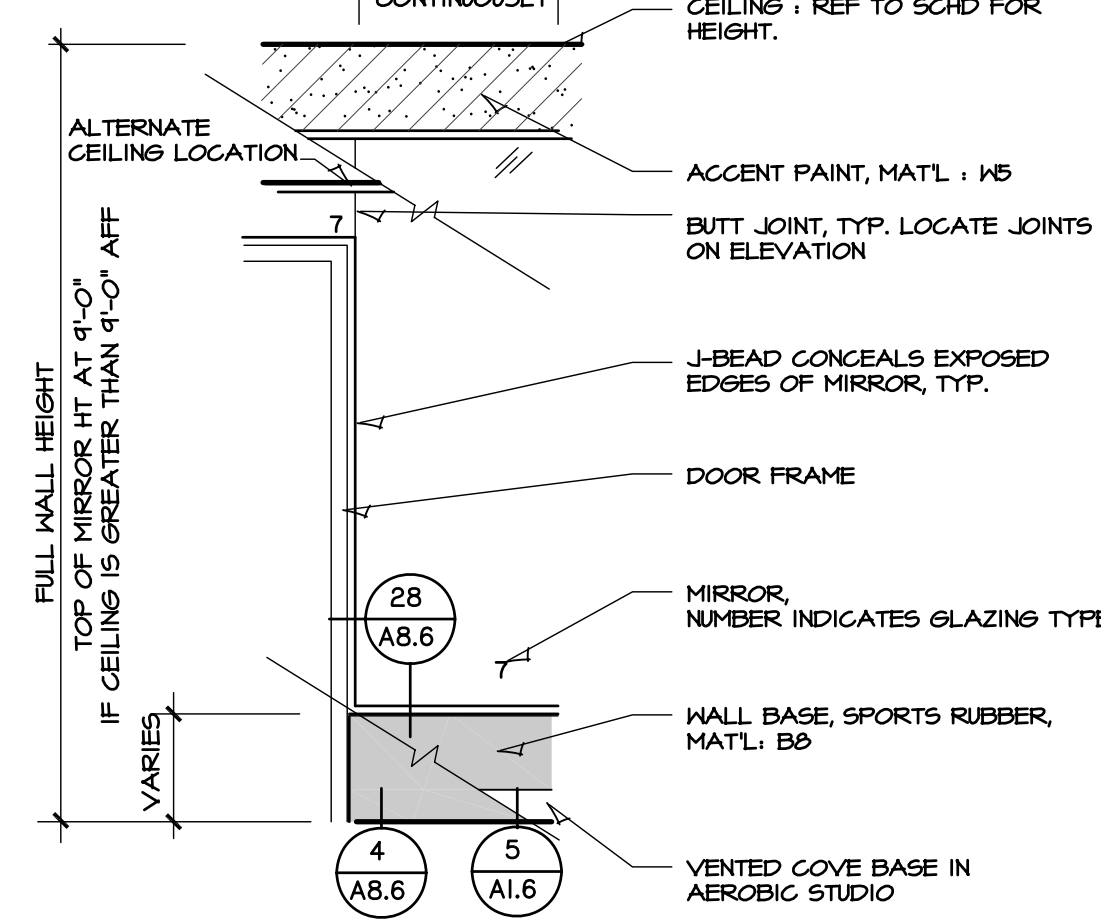
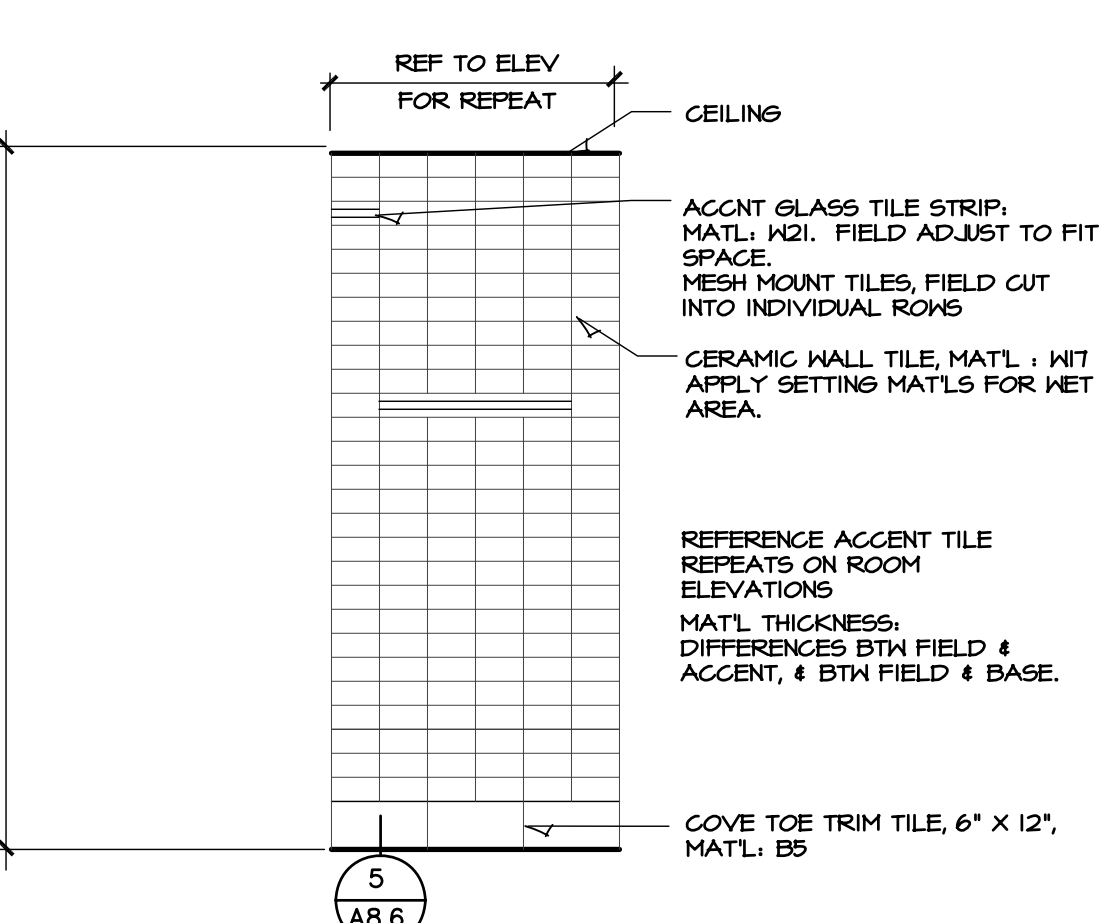
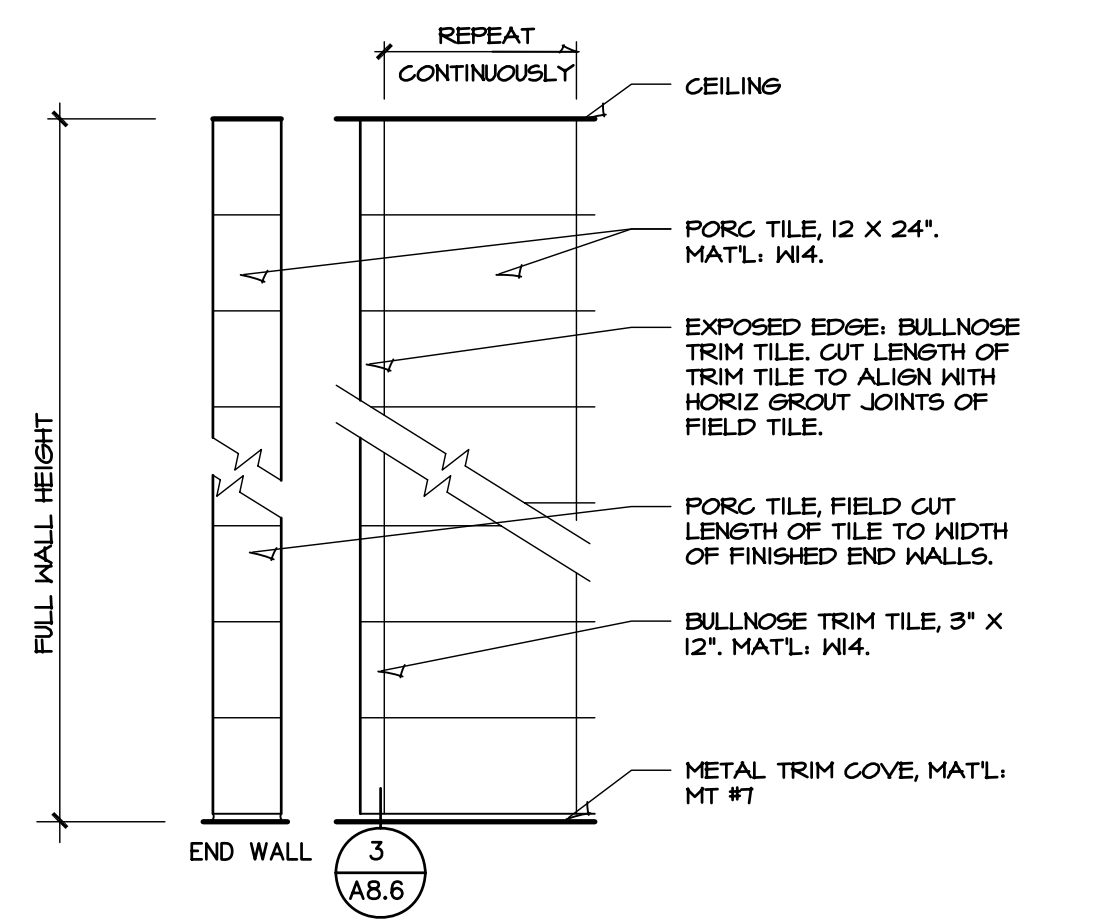
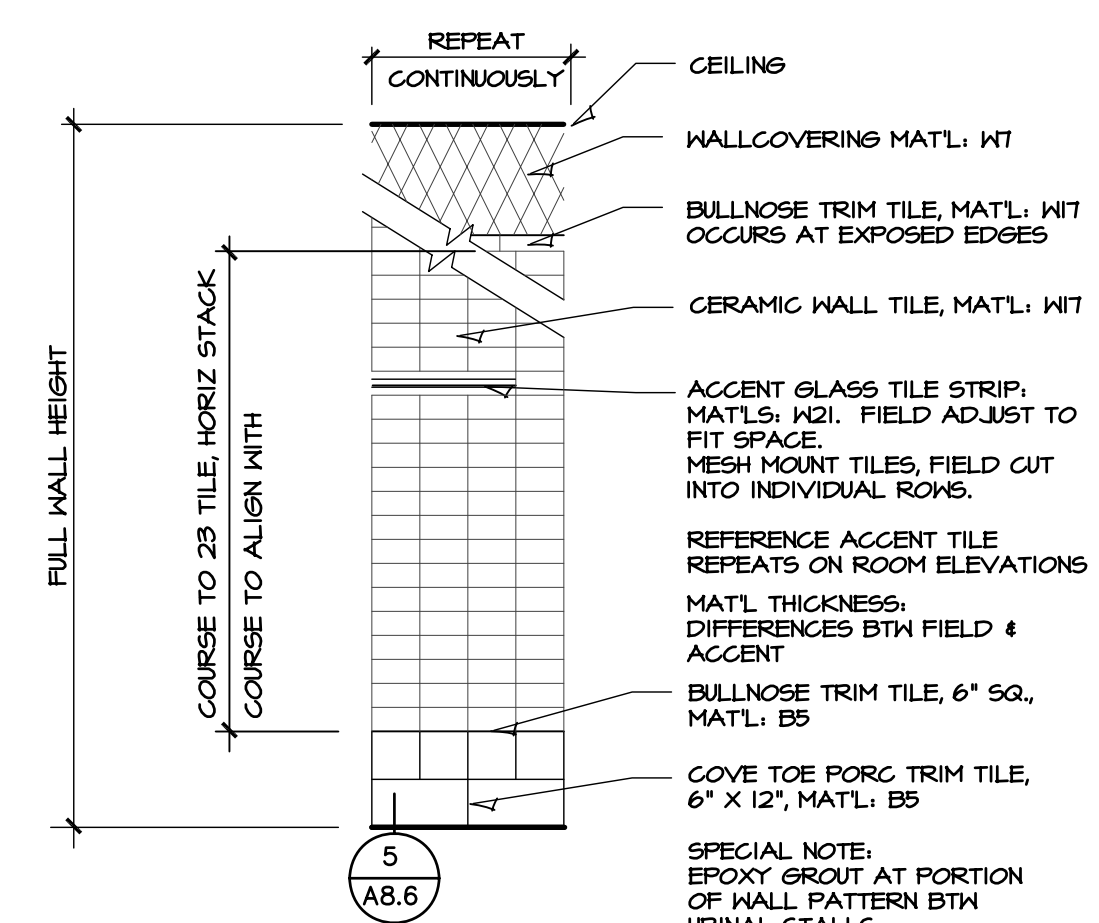
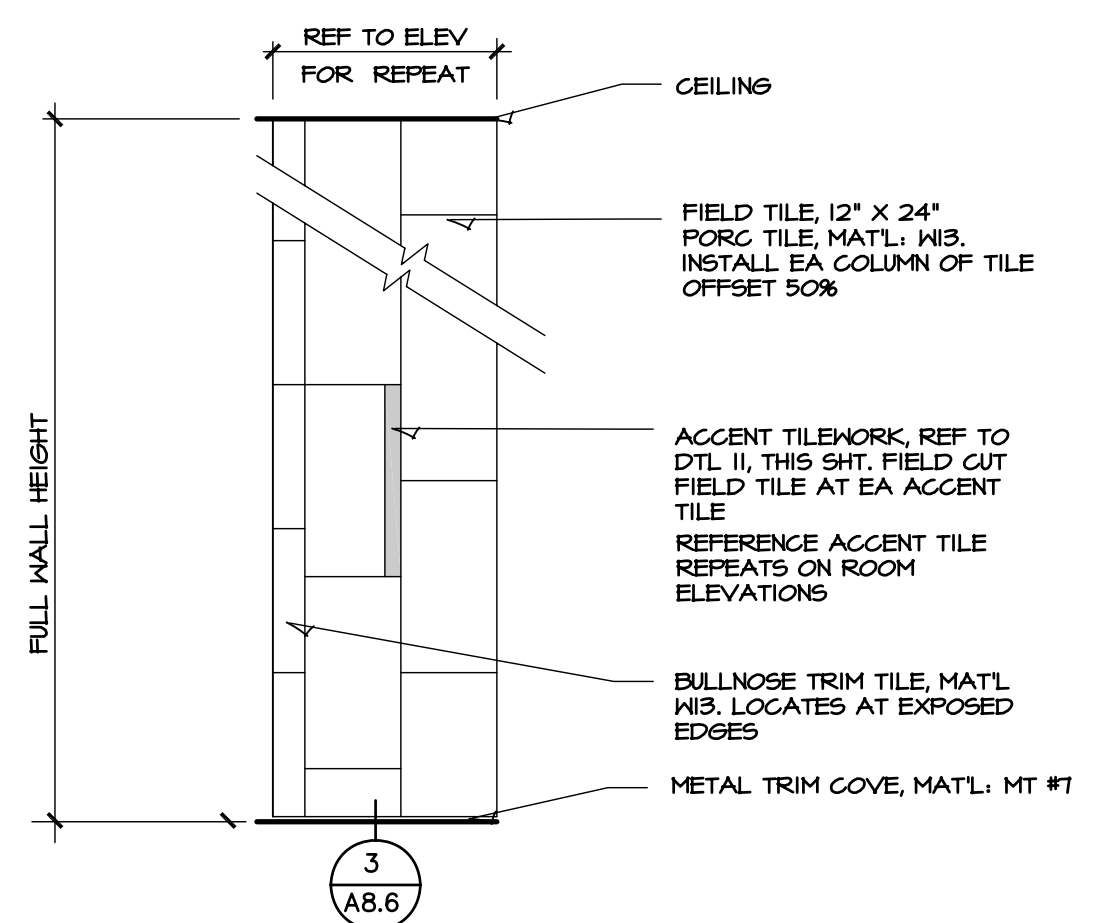
**1** GRANITE WALL AT LOBBY  
SUBSTRATE TO SUPPORT WEIGHT OF TILEWORK  
REF TO DTL 13/A8.2 MAINTAIN CURRENT TONA INSTALL. GUIDELINES

**2** CHILDCARE RESTROOM  
ACCENT TILE STRIP, RANDOM LOCATE. OCCURS 2 TIMES EACH WALL  
REF TO DTL 11/A8.2 MAINTAIN CURRENT TONA INSTALL. GUIDELINES

**3** DRINKING FOUNTAIN / ENTRY TO WOMEN'S LOCKER ROOM  
SPECIAL CONSTR FOR SUBSTRATE & PREP WALL. TILES TRANSLUCENT.  
REF TO DTL 12/A8.2 MAINTAIN CURRENT TONA INSTALL. GUIDELINES

**4** SHOWER ROOM WALL- KERDI WATERPROOF MEMBRANE, FULL COVERAGE.  
ACCENT TILE STRIP, RANDOM LOCATE. REFER TO ELEV FOR QUANTITY  
REF TO DTL 7/A8.2 MAINTAIN CURRENT TONA INSTALL. GUIDELINES

GENERAL FINISH NOTES REFERENCED ON SHEET A8.0



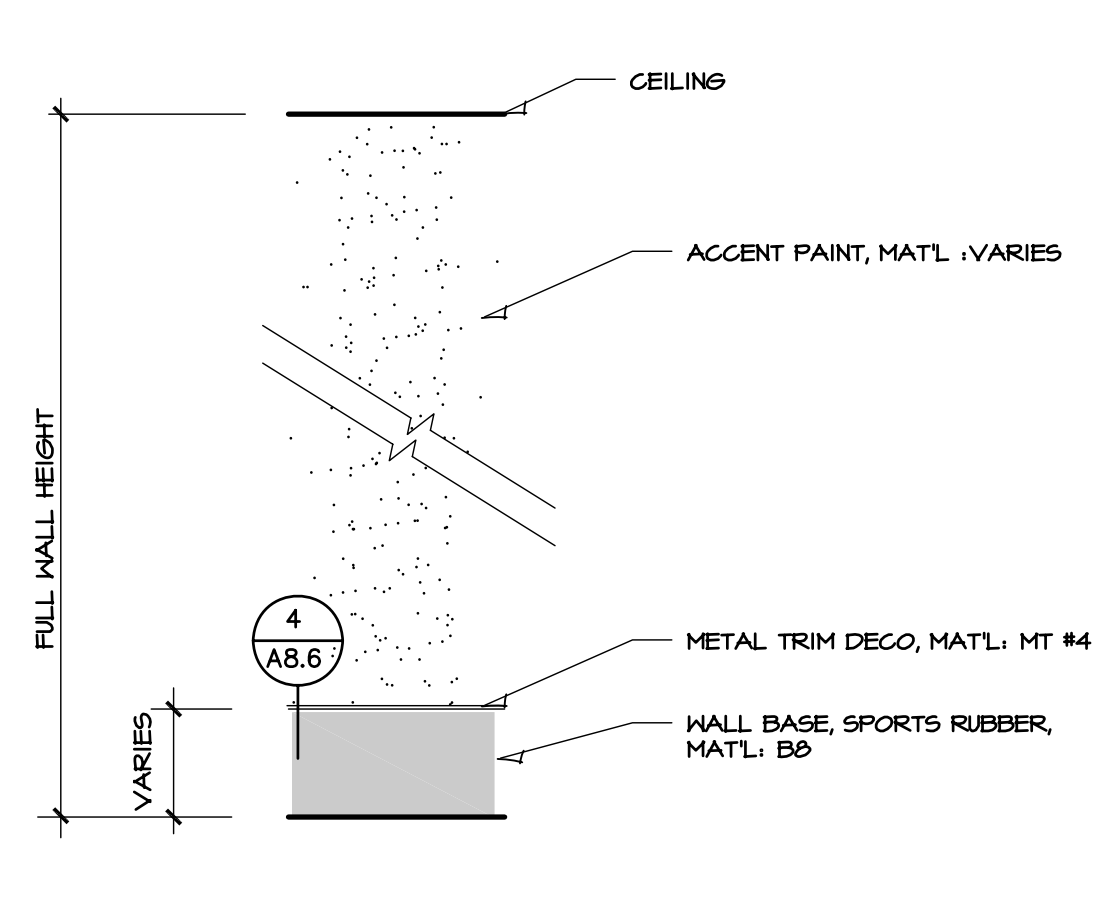
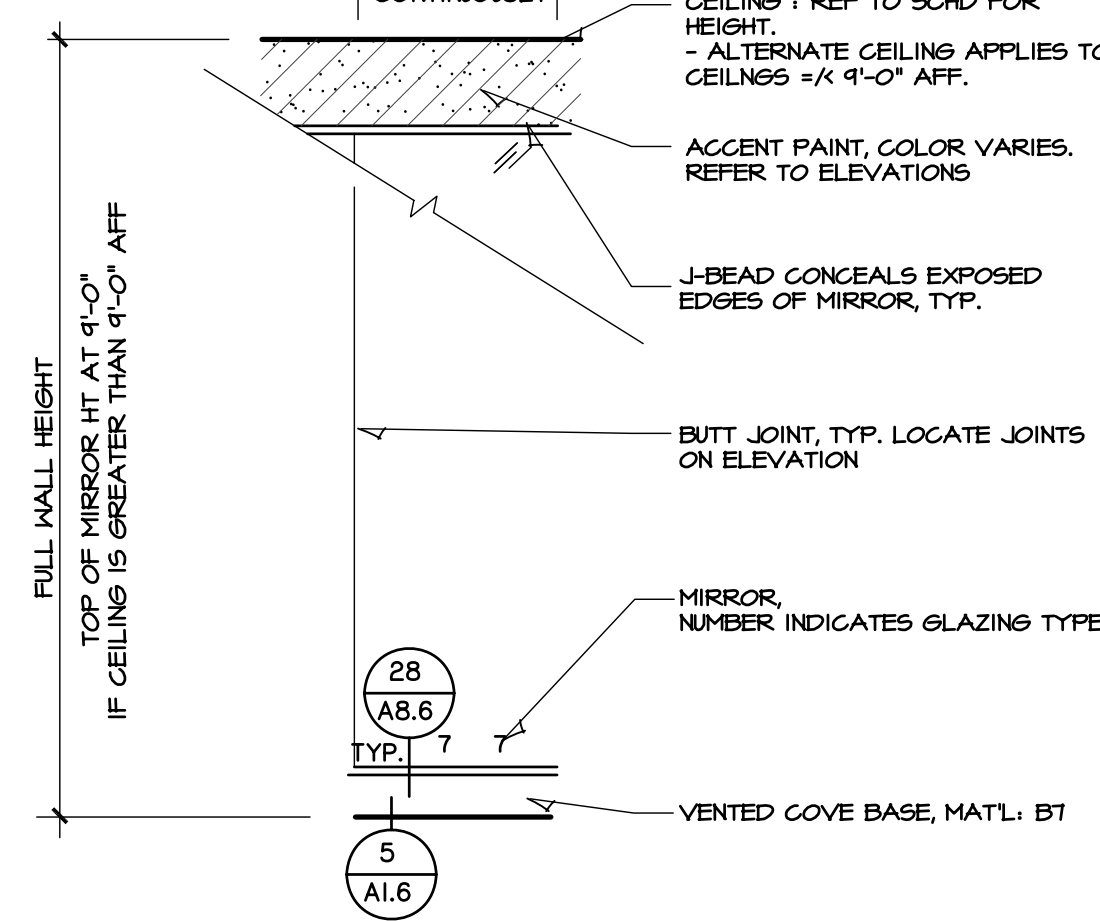
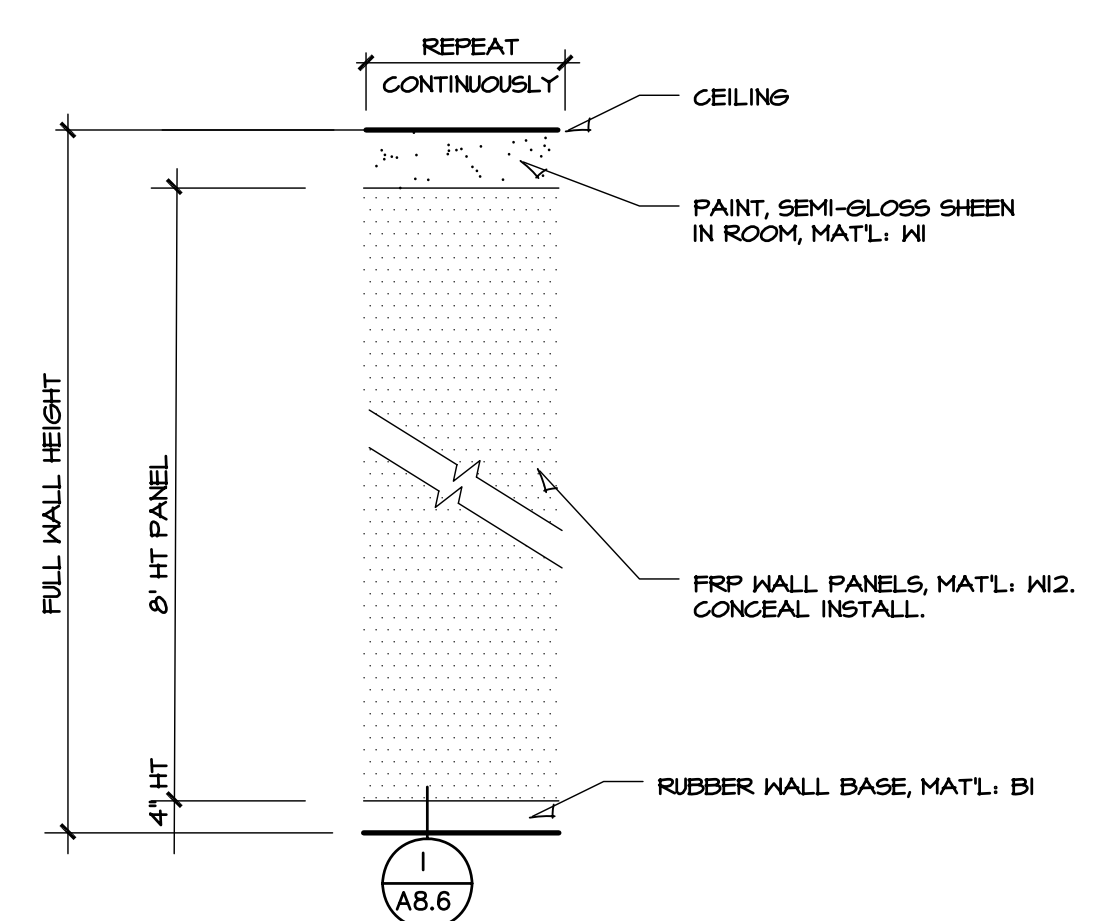
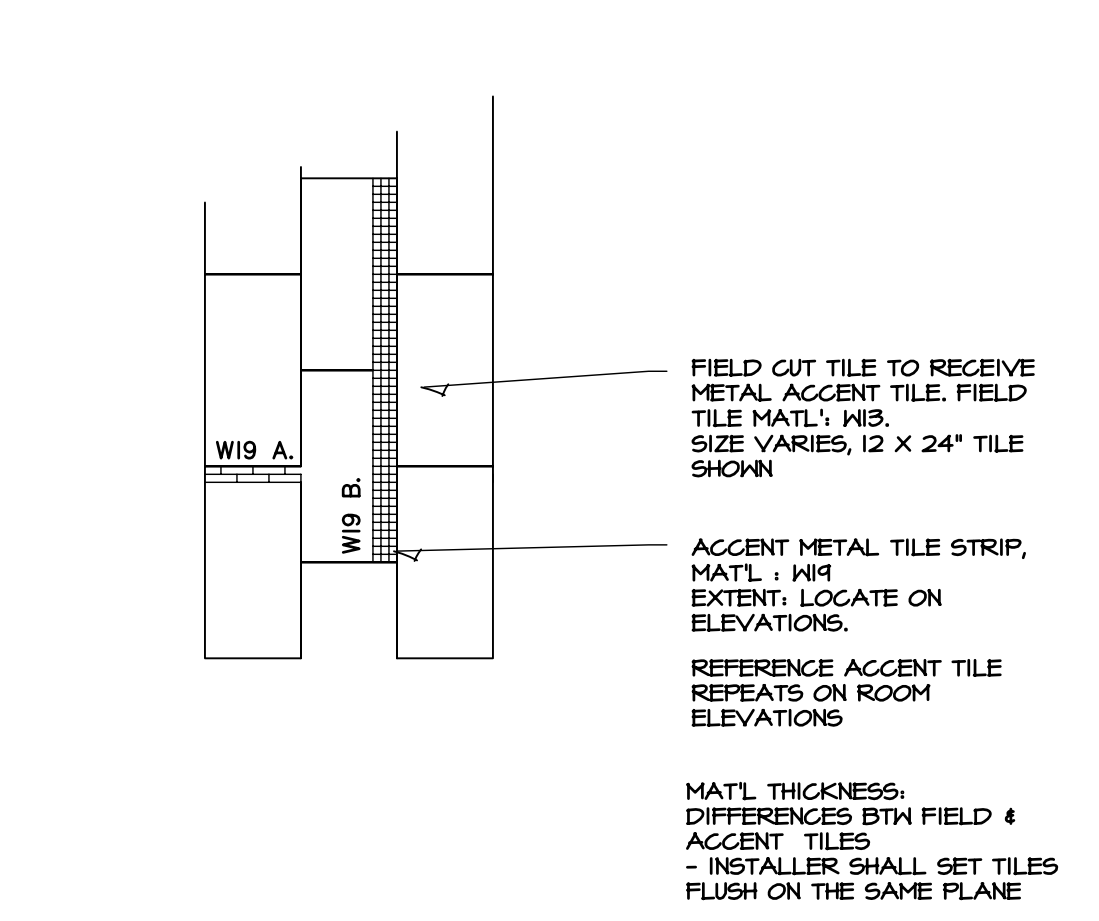
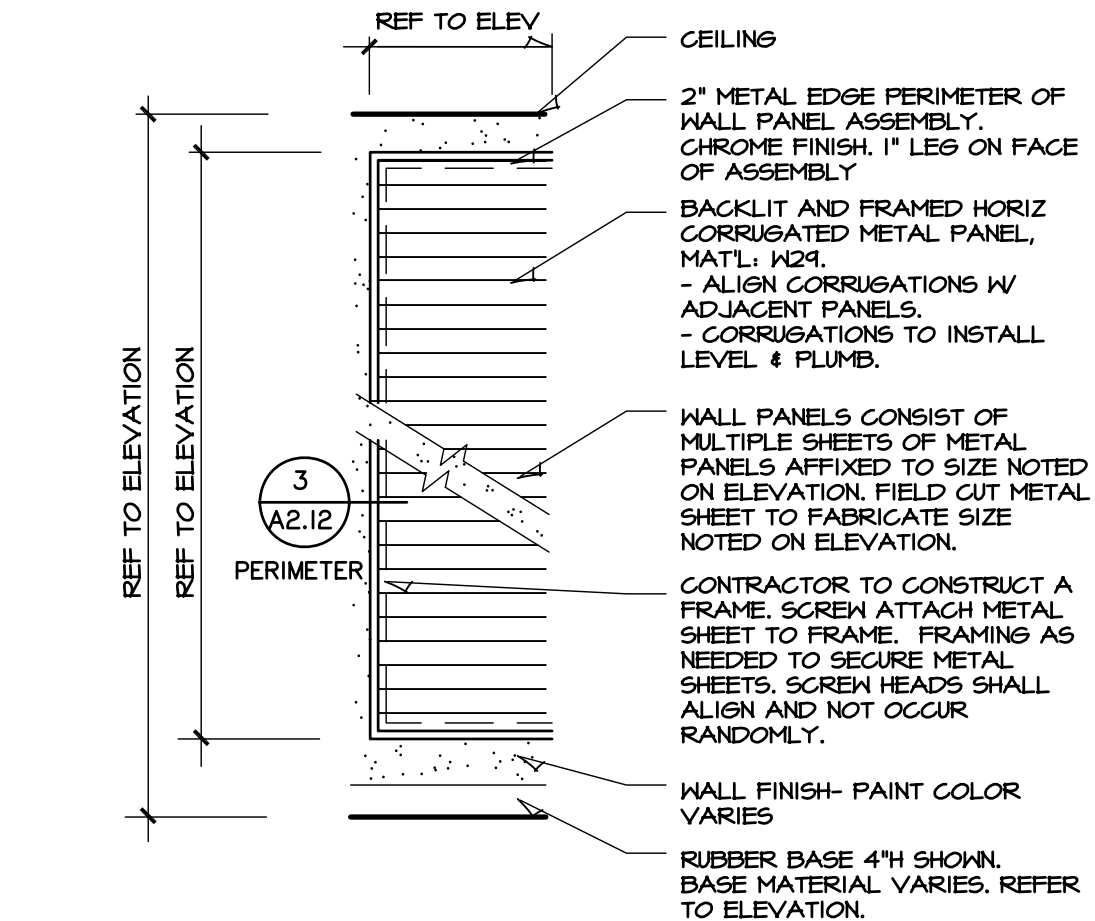
**5** LOCKER ROOM WALL  
SUBSTRATE TO SUPPORT WEIGHT OF TILEWORK  
REF TO DTL 11/A8.2 MAINTAIN CURRENT TONA INSTALL. GUIDELINES

**6** LOCKER VESTIBULE & LOCKER RESTROOM  
ACCENT TILE STRIP, RANDOM LOCATE. REFER TO ELEV FOR QUANTITY  
REF TO DTL 11 & 15/A8.2 MAINTAIN CURRENT TONA INSTALL. GUIDELINES

**7** LOCKER LAVATORY WALLS  
SUBSTRATE TO SUPPORT WEIGHT OF TILEWORK  
REF TO DTL 11/A8.2 MAINTAIN CURRENT TONA INSTALL. GUIDELINES

**8** KERDI WATERPROOF MEMBRANE, FULL COVERAGE.  
ACCENT TILE STRIP, RANDOM LOCATE. REFER TO ELEV FOR QUANTITY  
REF TO DTL 7/A8.2 MAINTAIN CURRENT TONA INSTALL. GUIDELINES

**9** MIRROR WALL  
CONCEAL ATTACHMENT OF MIRROR AND SPORTS RUBBER  
REFER TO SPEC SECTION 08800 FOR GLAZING TYPE INFORMATION



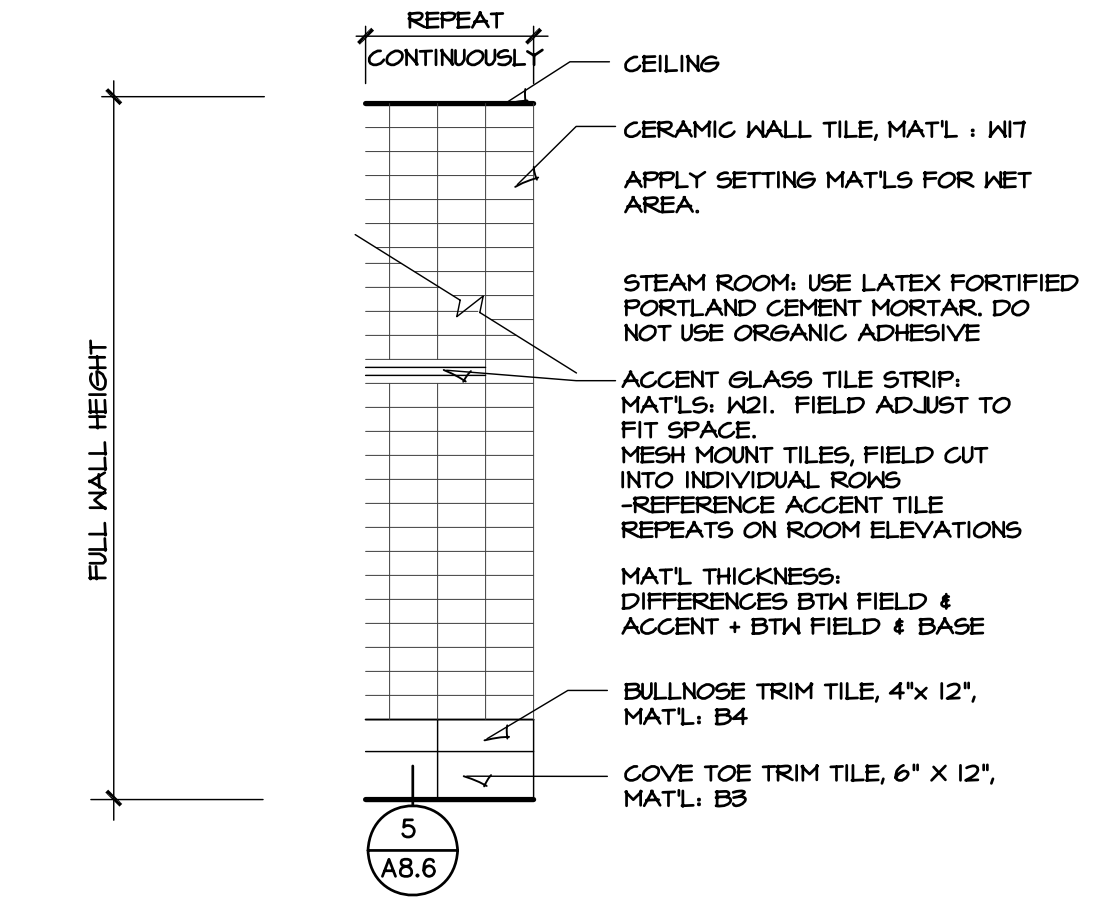
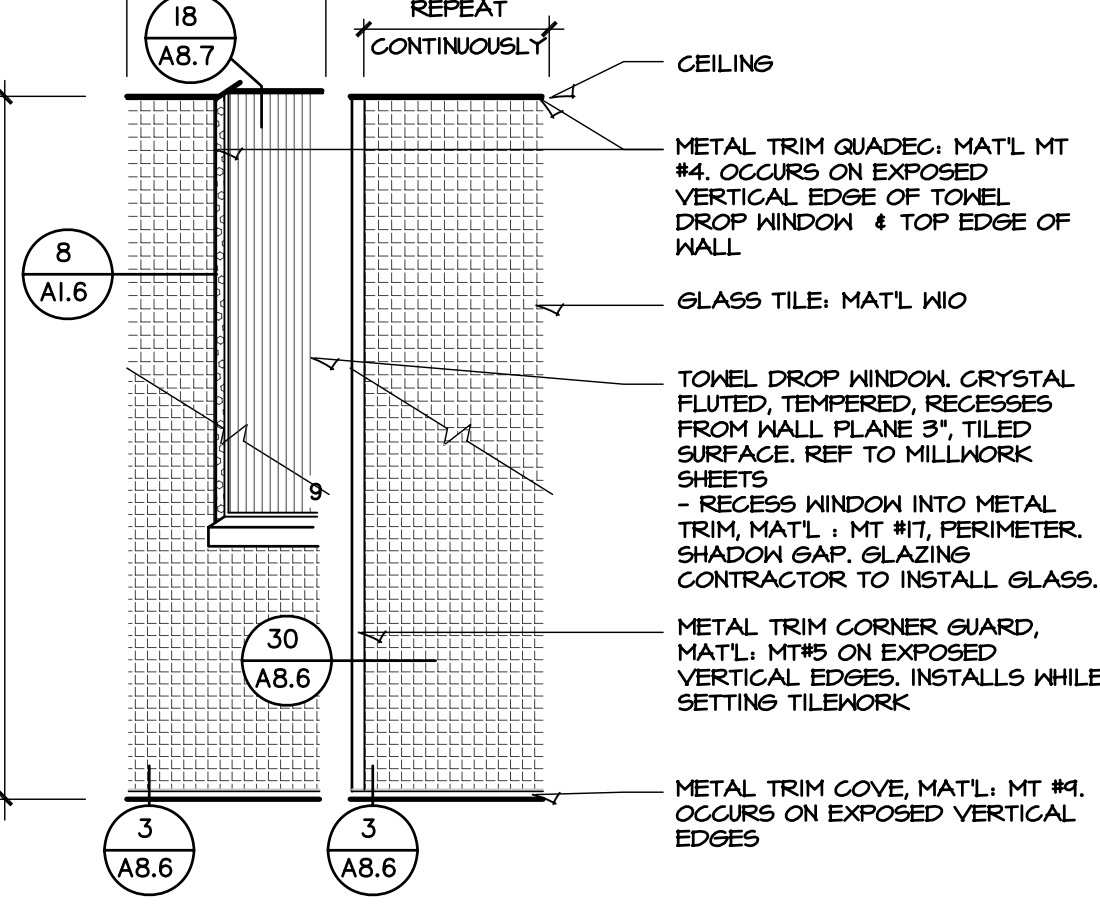
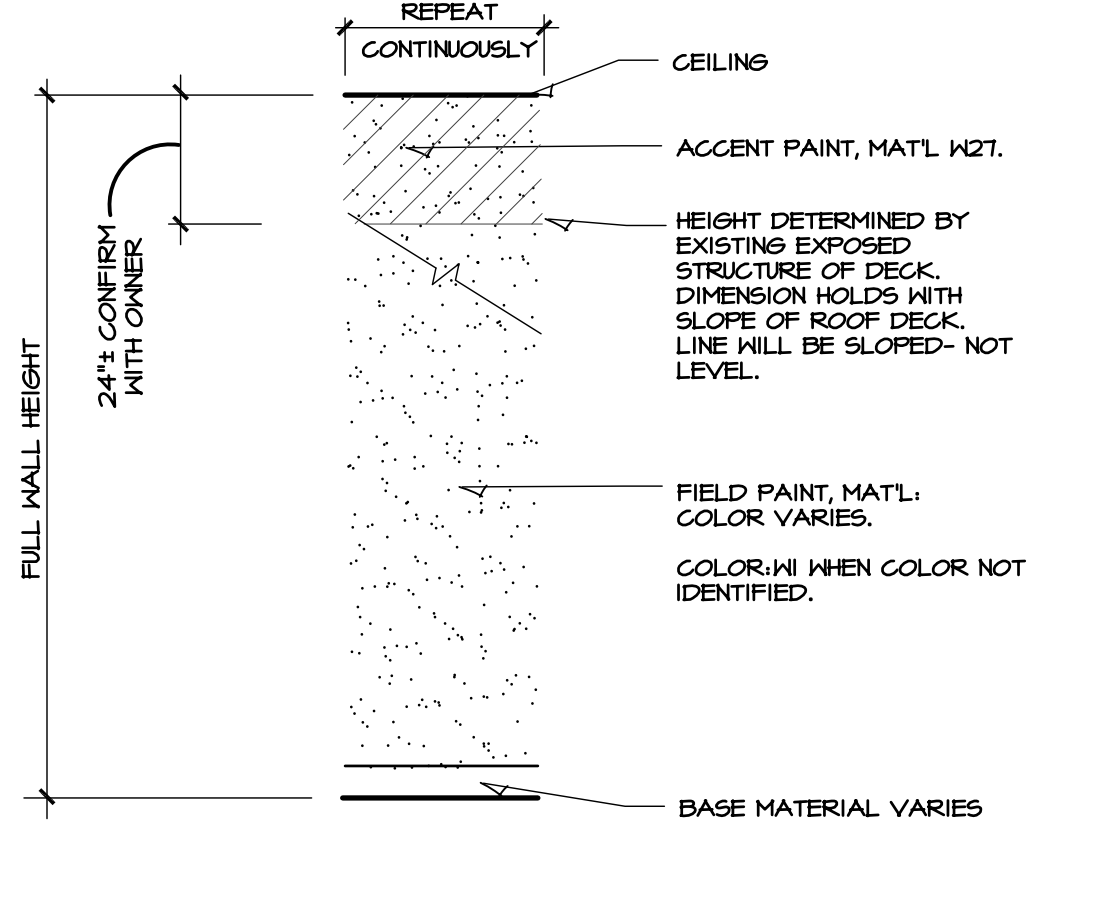
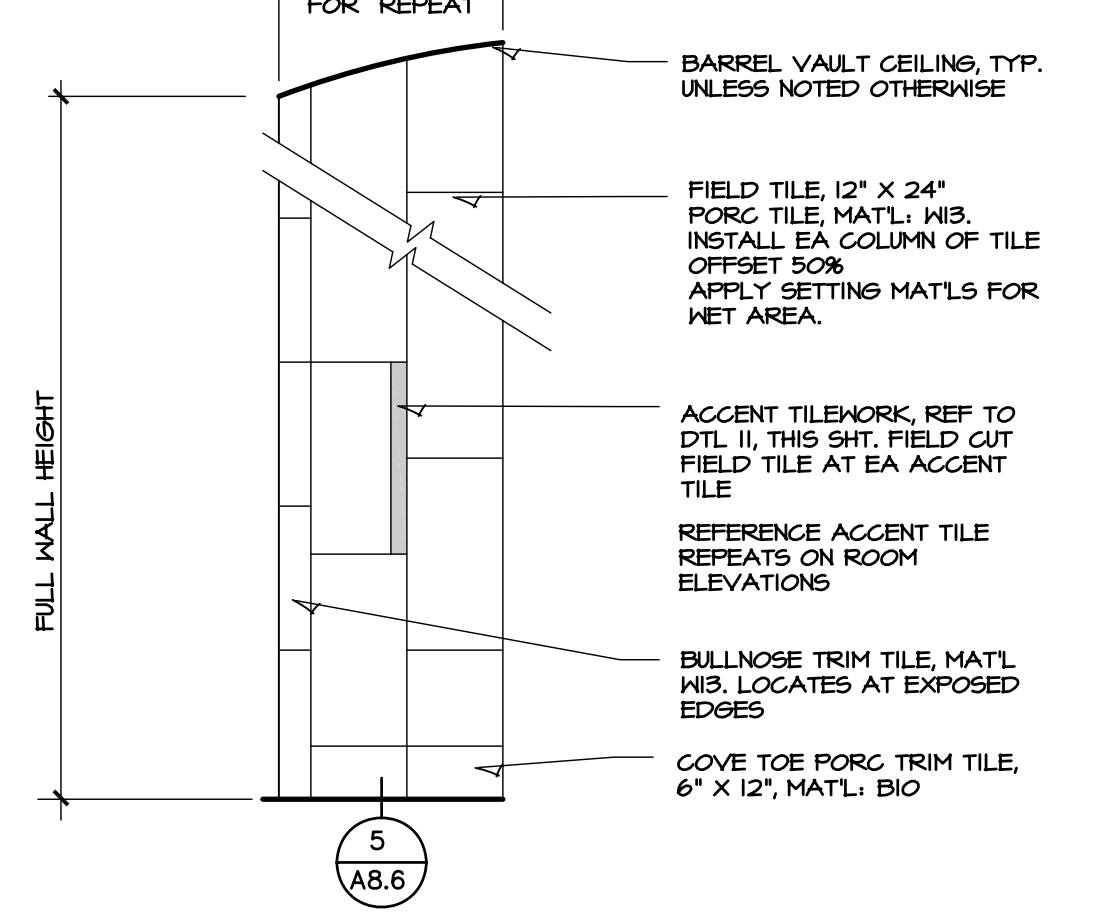
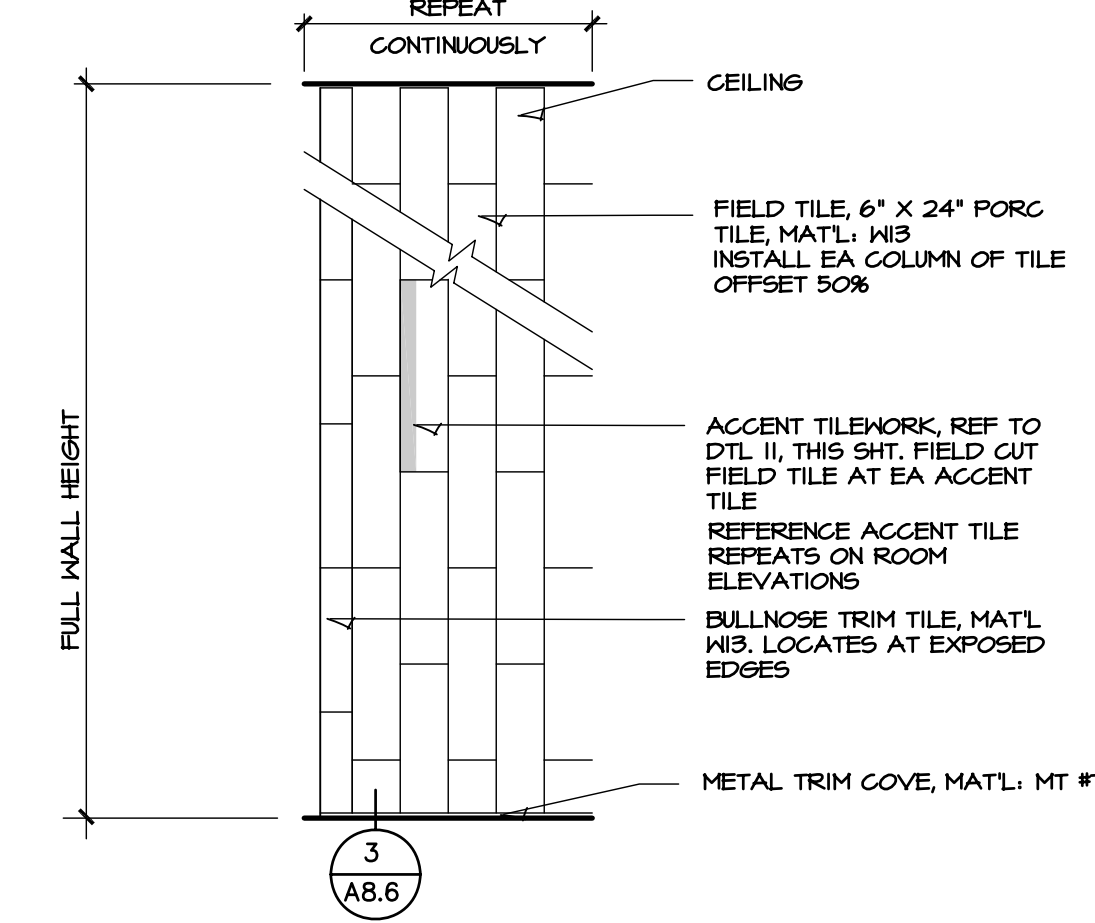
**10** CORRUGATED WALL PANELS  
'INWALL' BLOCKING REQUIRED WHERE WALL PANELS ARE HUNG  
MOUNT WALL PANELS LEVEL.

**11** ACCENT TILE IN PATTERN 5, 16 & 17/ THIS SHEET  
ACCENT TILE STRIP, RANDOM LOCATE.  
REF TO DTL 7 & 11/A8.2 MAINTAIN CURRENT TONA INSTALL. GUIDELINES

**12** LAUNDRY ROOM & CUSTODIAL PLUMBING WALL  
INSTALL COORDINATING TRIM FOR COMPLETE INSTALL.  
EXTENT: LOCATE ON ELEVATIONS

**13** FITNESS ROOM MIRROR WALL  
CONCEAL ATTACHMENT OF MIRROR  
REFER TO SPEC SECTION 08800 FOR GLAZING TYPE INFORMATION

**14** ACCENT PAINT WALL  
ACCENT TILE STRIP, RANDOM LOCATE. REFER TO ELEV FOR QUANTITY  
REF TO DTL 7/A8.2 MAINTAIN CURRENT TONA INSTALL. GUIDELINES



**16** LOCKER ROOM WALL  
SUBSTRATE TO SUPPORT WEIGHT OF TILEWORK  
REF TO DTL 11/A8.2 MAINTAIN CURRENT TONA INSTALL. GUIDELINES

**17** SHOWER ROOM  
KERDI WATERPROOF MEMBRANE, FULL COVERAGE  
REF TO DTL 7/A8.2 MAINTAIN CURRENT TONA INSTALL. GUIDELINES

**18** PAINT PATTERN  
INWALL BLOCKING TO SUPPORT FUNCTION OF DISPLAY WALL

**19** LOCKER ROOM ENTRY  
REF TO DTL 7/A8.0 MAINTAIN CURRENT TONA INSTALL. GUIDELINES

**20** STEAM ROOM WALL PATTERN  
KERDI-S WATERPROOF MEMBRANE, FULL COVERAGE  
REF TO DTL 8/A8.0 MAINTAIN CURRENT TONA INSTALL. GUIDELINES



4/20/22  
**HANNAY & ASSOCIATES, ARCHITECTS**  
1726 South Hillside, Wichita, Kansas, 67211  
Phone (316) 883-8965  
Fax (316) 884-1441

**2022 GENESIS HEALTH CLUBS**  
SOUTHTRIDGE MALL  
1111 East Army Post Road  
Des Moines, Iowa 50315



DRAWINGS ISSUED	
NO.	DATE
10	4/20/22
11	2/11/22
12	1/25/22
13	12/15/21
14	9/24/21
15	8/21/21
16	1/21/21
17	1/08/21
18	5/25/21
19	3/20/21

COMPUTER DRAWING  
DMS\_A8.04.dwg

DATE: AUGUST 2021  
DRAWN BY: CHECKED BY:  
MH, CH, DH, TH, TC MHR

SHEET  
**A8.4**  
OF SHEETS