

4/29/22

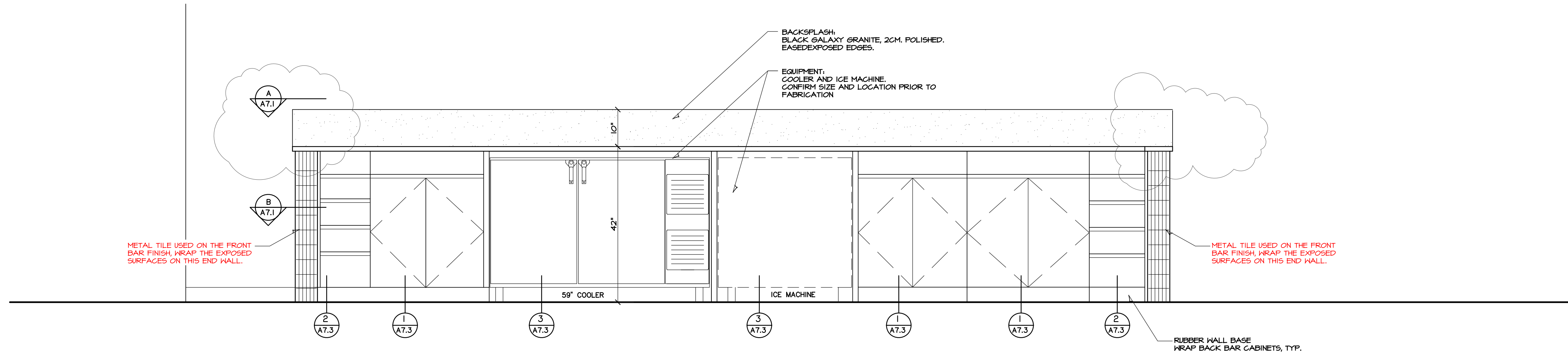
HANNEY & ASSOCIATES, ARCHITECTS  
 1728 South Hillside, Wichita, Kansas 67211  
 Phone (316) 683-8985  
 Fax (316) 684-1441

2022  
**GENESIS HEALTH CLUBS**  
 SOUTHBRIDGE MALL  
 1111 East Army Post Road  
 Des Moines, Iowa 50315

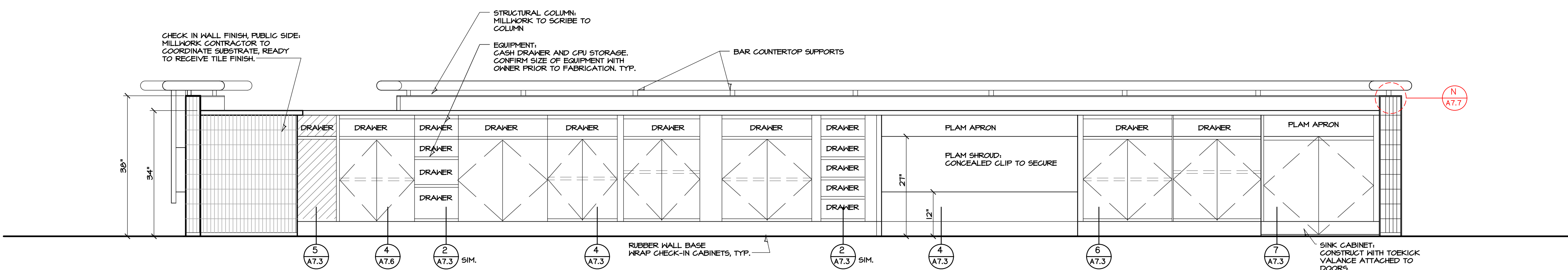


THIS IS A REPEAT OF THE DETAILS ON A7.1  
 AND HAS BEEN DELETED FROM THIS SHEET  
 VIA ADDENDUM 3, 4/29/22

**CHECK-IN  
 A CABINET PLAN**  
 SCALE: 3/4"=1'-0"



**1 BACK BAR  
 ELEVATION**  
 SCALE: 3/4"=1'-0"



**CHECK-IN  
 2 ELEVATION**  
 SCALE: 3/4"=1'-0"

DRAWINGS ISSUED			
NO.	DATE	ITEM	ISSUED
10	4/29/22	ADDENDUM 3	
4	2/11/22	PERMIT SET	
8	1/25/22	CHECK SET	
7	12/15/21	CHECK SET	
6	9/24/21	CHECK SET	
5	8/21/21	SITE PLAN REVIEW	
4	1/21/21	UDRB SUBMITTAL	
3	1/08/21	MILESTONE DEV. PLAN	
2	5/25/21	CONCEPT. DEV. PLAN	
1	3/20/21	CONCEPT. DEV. PLAN	

COMPUTER DRAWING  
 DMS\_A702.dwg

DATE: AUGUST 2021  
 DRAWN BY: CHECKED BY:  
 MH, CH, DH, TH, TC MRH

SHEET  
**A7.2**  
 OF SHEETS