

4/12/22  
**HANNEY & ASSOCIATES, ARCHITECTS**  
 1726 South Hillside, Wichita, Kansas, 67211  
 Phone (316) 683-8985  
 Fax (316) 684-1441

2022  
**GENESIS HEALTH CLUBS**  
 SOUTHBRIDGE MALL  
 1111 East Army Post Road  
 Des Moines, Iowa 50315



DRAWINGS ISSUED			
NO.	DATE	ITEM	ISSUED
11	4/12/22	ADDENDUM 1	
10	3/25/22	CODE REVISIONS	
9	2/11/22	PERMIT SET	
8	1/25/22	CHECK SET	
7	12/15/21	CHECK SET	
6	9/24/21	CHECK SET	
5	8/21/21	SITE PLAN REVIEW	
4	1/21/21	UDRB SUBMITTAL	
3	1/08/21	MILESTONE DEV. PLAN	
2	5/25/21	CONCEPT DEV. PLAN	
1	3/20/21	CONCEPT DEV. PLAN	

COMPUTER DRAWING  
 DMS\_613.dwg

DATE: AUGUST 2021  
 DRAWN BY: CHECKED BY:  
 MH, CH, DH, TH, TC MRH

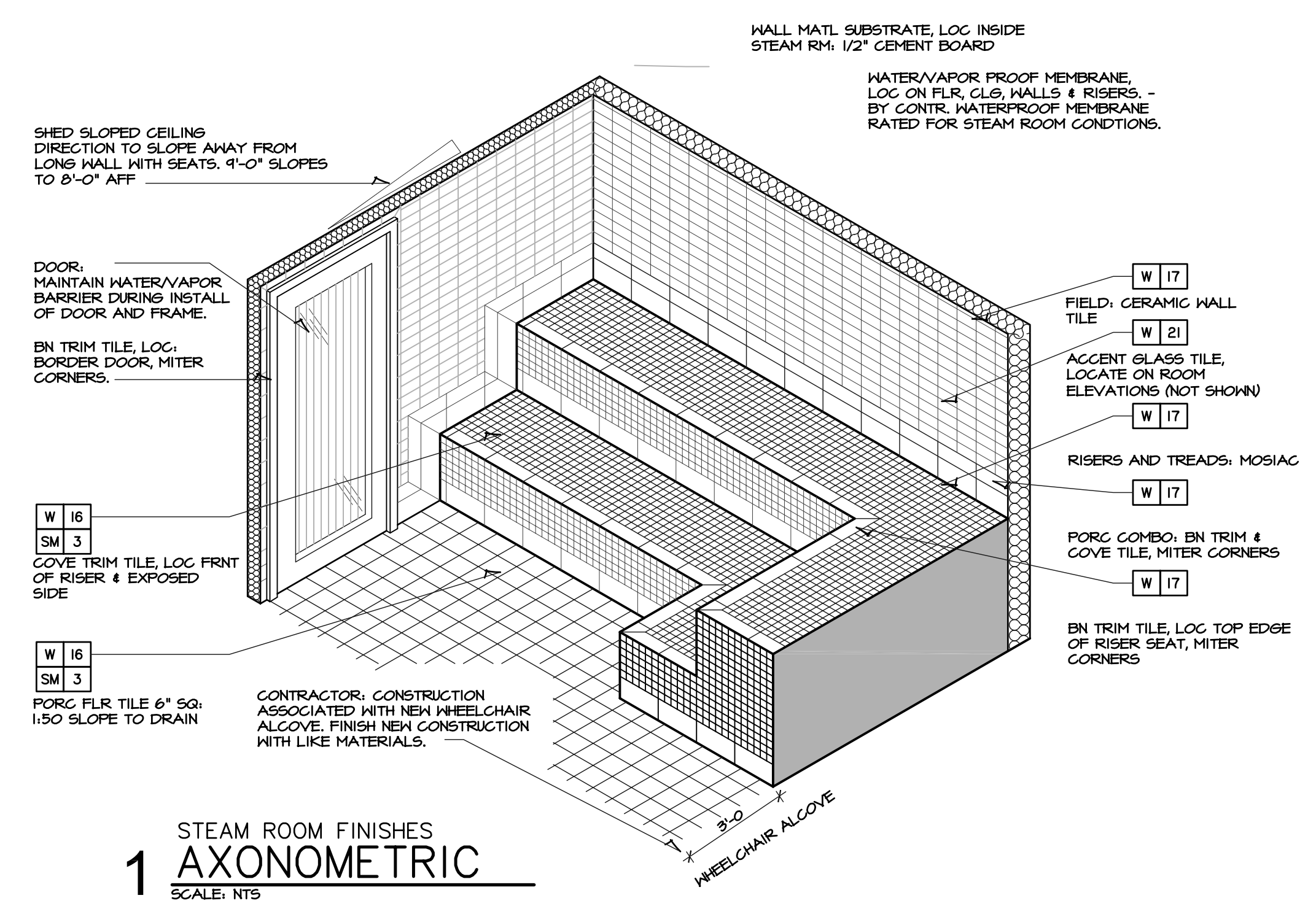
SHEET  
**A6.13**  
 OF SHEETS

NOT USED

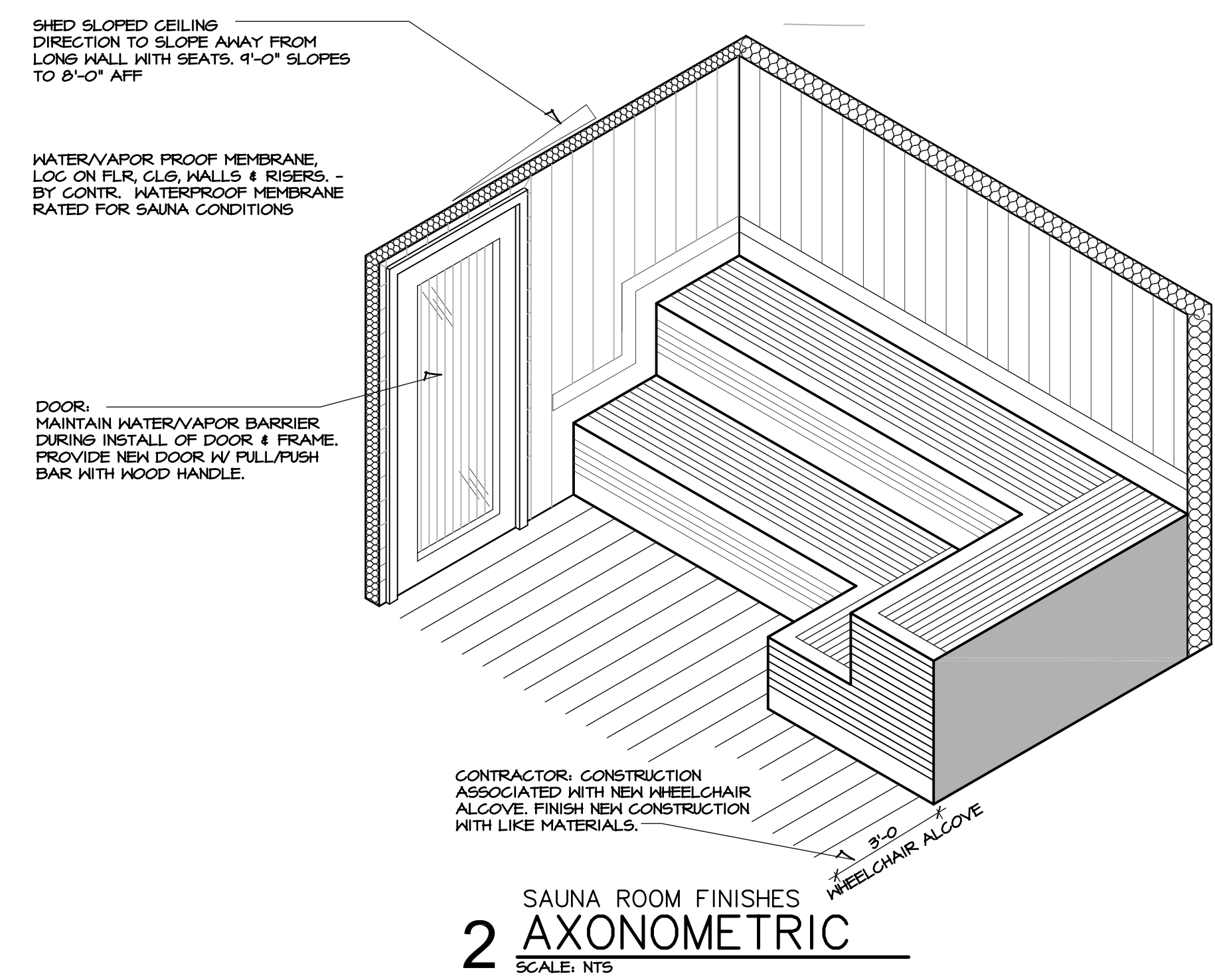
**3 DETAIL**  
 SCALE: NTS

NOT USED

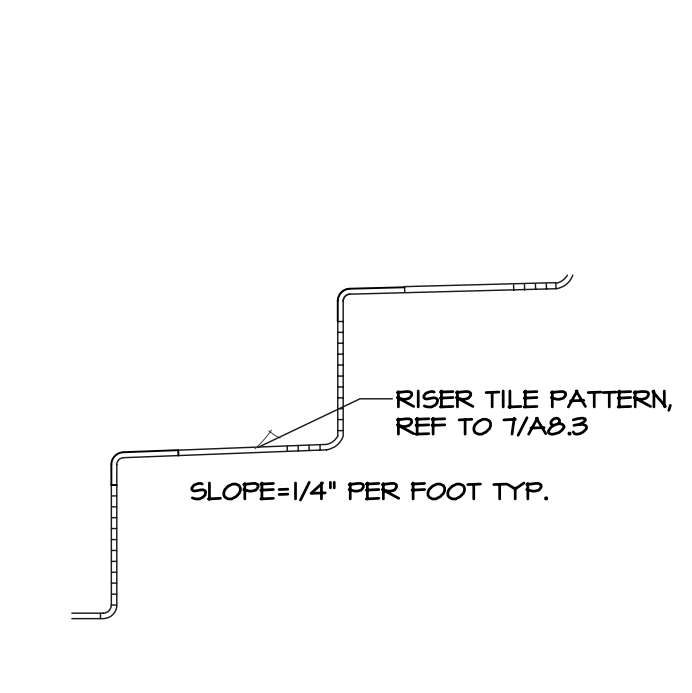
**4 DETAIL**  
 SCALE: NTS



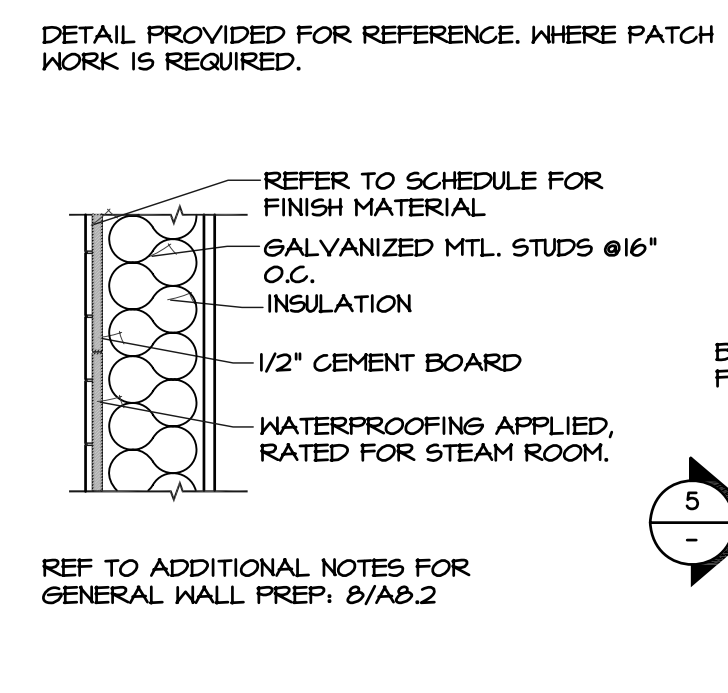
**1 STEAM ROOM FINISHES AXONOMETRIC**  
 SCALE: NTS



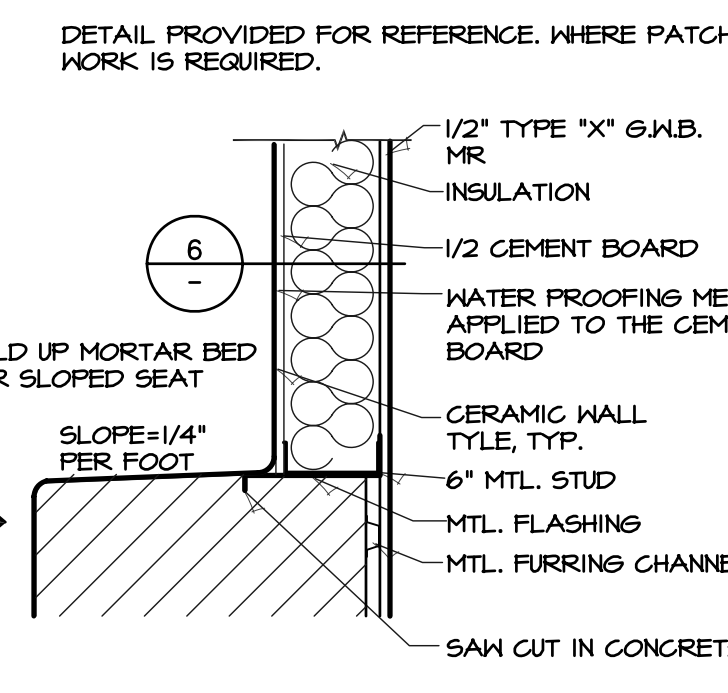
**2 SAUNA ROOM FINISHES AXONOMETRIC**  
 SCALE: NTS



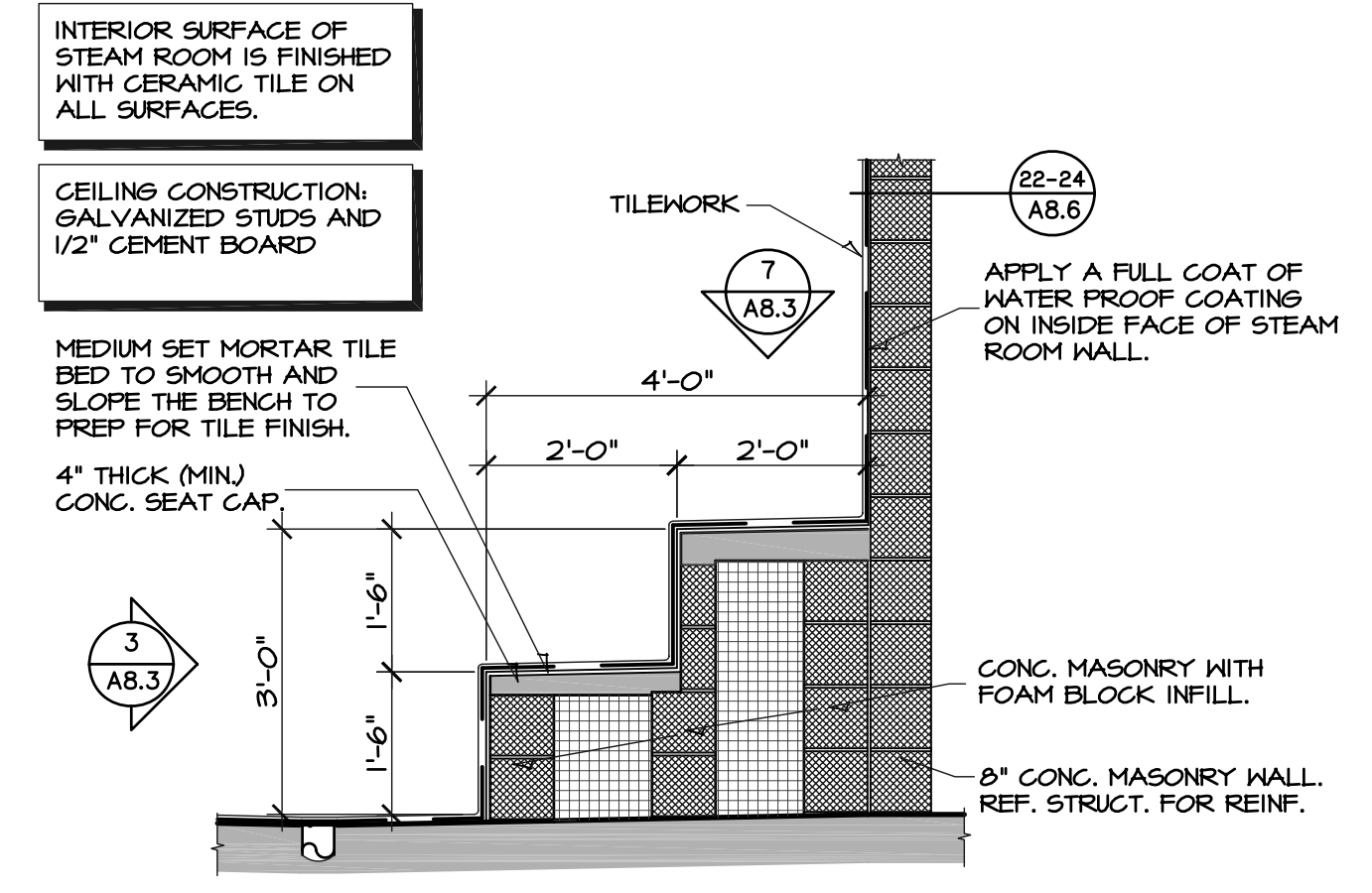
**5 STEAM ROOM FINISHES TILEWORK**  
 SCALE: NTS



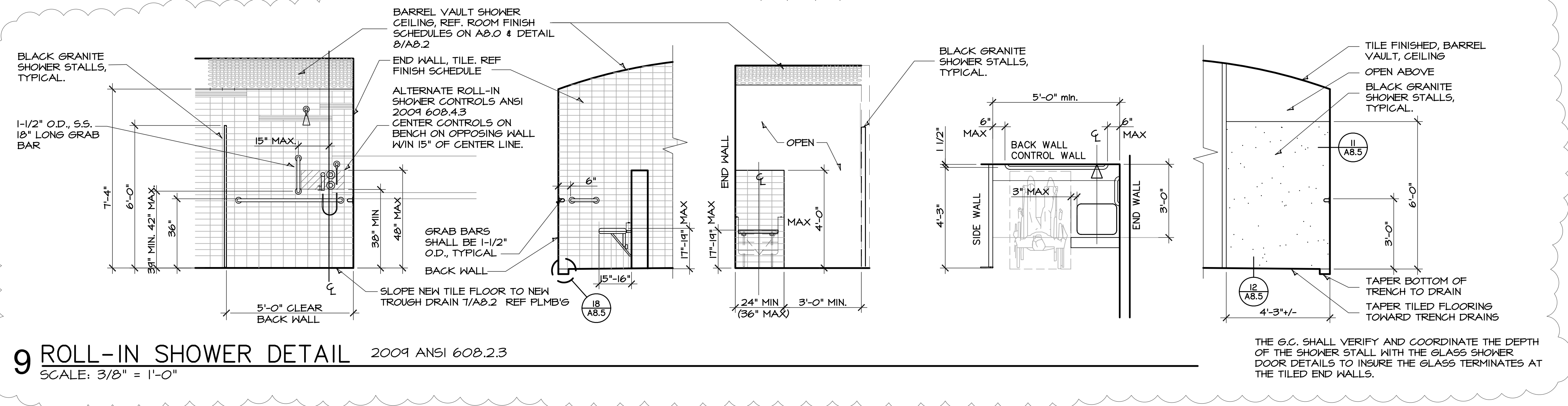
**6 STEAM ROOM FINISHES TILEWORK**  
 SCALE: NTS



**7 STEAM ROOM FINISHES TILEWORK**  
 SCALE: NTS



**8 STEAM ROOM BENCH**  
 SCALE: 1/2" = 1'-0"



**9 ROLL-IN SHOWER DETAIL** 2009 ANSI 608.2.3  
 SCALE: 3/8" = 1'-0"

THE G.C. SHALL VERIFY AND COORDINATE THE DEPTH OF THE SHOWER STALL WITH THE GLASS SHOWER DOOR DETAILS TO INSURE THE GLASS TERMINATES AT THE TILED END WALLS.