

THE YELLOW HATCH ON THIS DRAWING INDICATES THE PROJECT AREA. SPACE WITHIN THE PROPERTY THAT IS IN THE YELLOW HATCH IS NOT PLANNED FOR ANY MODIFICATION AT THIS TIME. IF THE PROPERTY OUTSIDE THE YELLOW HATCH IS DEVELOPED IN THE FUTURE, IT WILL BE SUBMITTED FOR FOR UDRB AND SITE PLAN REVIEW. UNTIL THAT TIME THE PROPERTY NOT IN THE YELLOW HATCH WILL REMAIN "AS-IS" WITH PROPER UPKEEP AND MAINTENANCE.

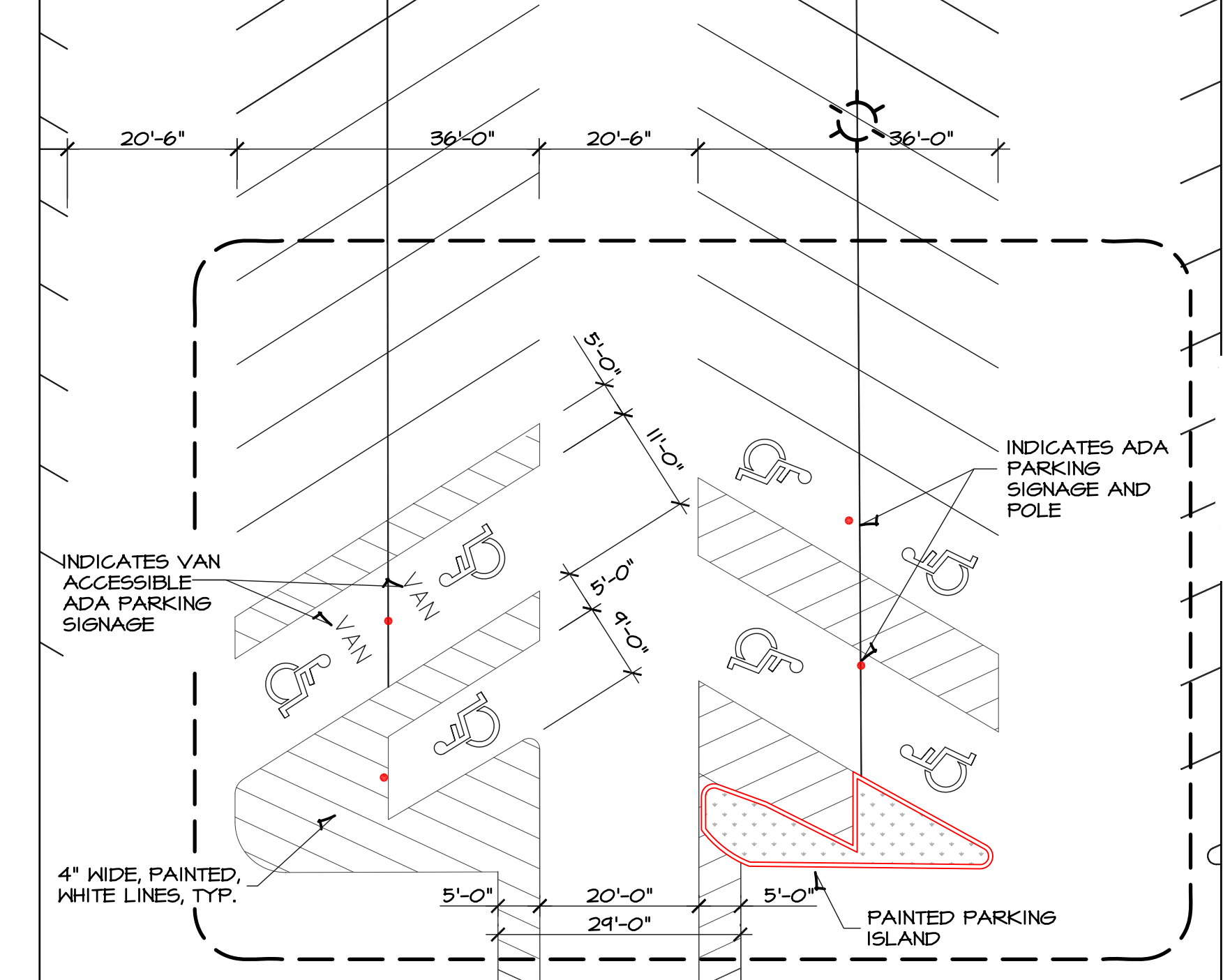
THE FORMER YELLOW HATCH ON THE PARKING LOT WAS TO INDICATE TO THE CITY THE AMOUNT OF PARKING REQUIRED BY ZONING TO SUPPORT THE GENESIS HEALTH CLUB VS. THE EXISTING PARKING AVAILABLE.

THE YELLOW HATCH HAS BEEN REMOVED WITH ADDENDUM 3, ISSUED 4/24/22.

THERE IS AN EXISTING PARKING LOT ISLAND ON THE SOUTH OF THE NEW ADA PARKING THAT IS TO REMAIN. THE SITE DRAWINGS HAVE BEEN REVISED TO SHOW THIS ISLAND (MATCHING THE SPOT ELEVATION DIAGRAM ON SHEET ASI.3)

THE PARKING AISLES AND 60-DEGREE PARKING IS EXISTING. THE LIGHT POLES AND SEVERAL CURB OPENINGS ARE LAID OUT TO WORK WITH THIS CONFIGURATION, WE DID NOT PLAN TO CHANGE THE LAYOUT.

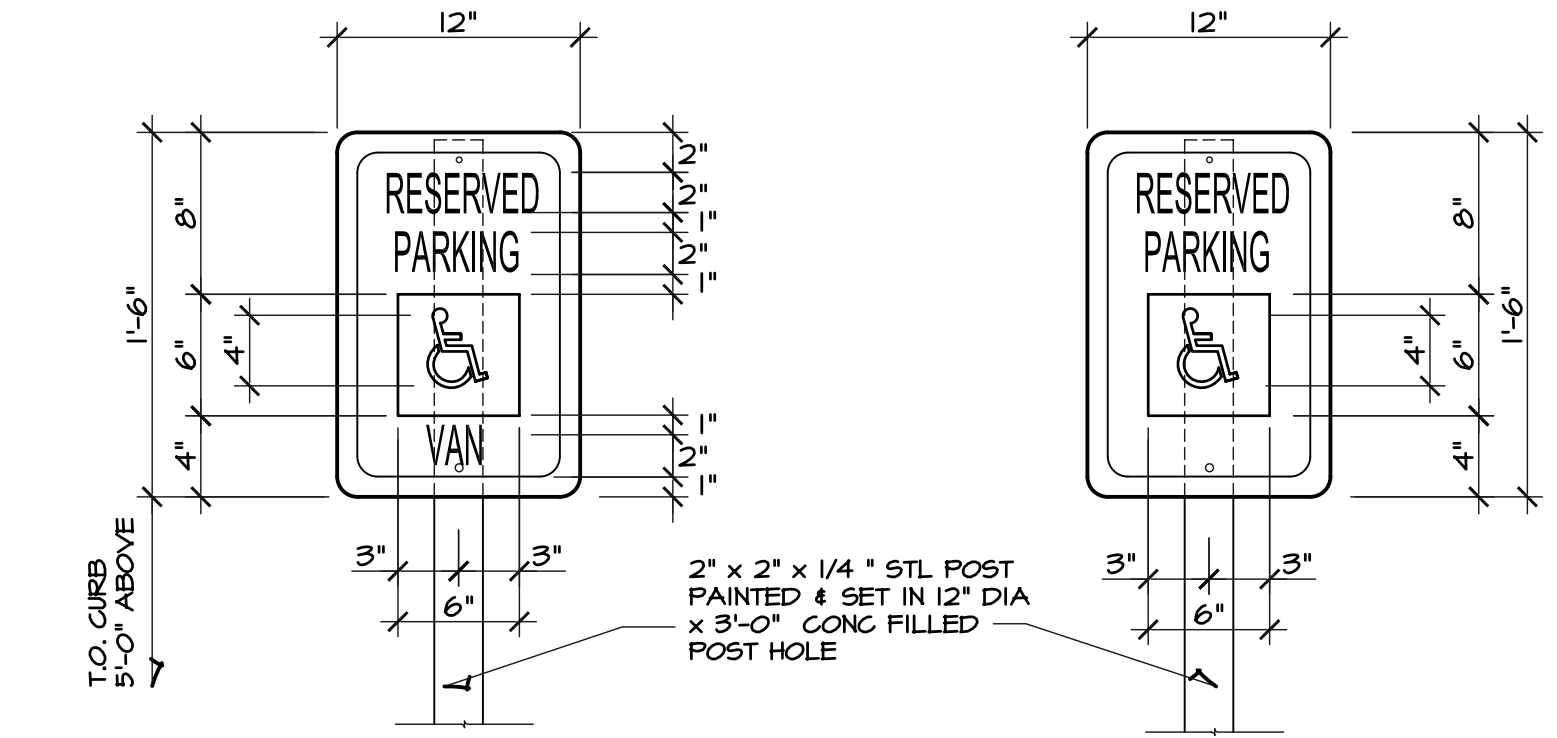
A PARKING SITE PLAN
SCALE: 1" = 30'-0"



THE ADA PARKING STALLS SHOWN ON THE PLAN ABOVE ARE NEW AND THE GENERAL CONTRACTOR SHALL INCLUDE IN THE BASE BID THE COST TO PAINT OUT THE EXISTING ADA PARKING THAT WILL NO LONGER BE USED, RESTORING THAT PARKING TO BE NORMAL PARKING STALLS AND PAINT THE NEW ADA PARKING GRAPHICS AS SHOWN, ALSO PAINTING THE CROSS WALK THAT CONNECTS THE NEW ADA PARKING TO THE NEW CURB RAMP, AND PAINTING THE STRIPPED "DROP OFF ZONE" THAT PARALLELS THE CURB, REFER TO DETAIL "A" ON SHEET ASI.5.

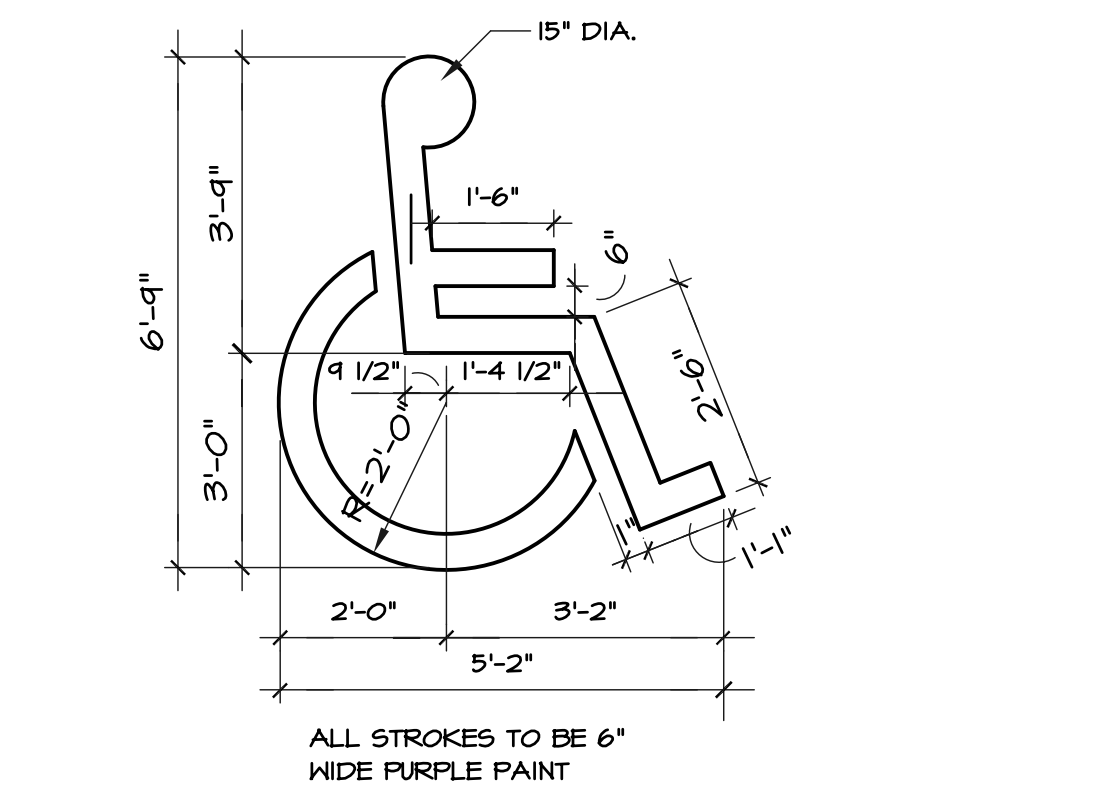
THERE IS AN EXISTING PARKING LOT ISLAND ON THE SOUTH OF THE NEW ADA PARKING THAT IS TO REMAIN. THE SITE DRAWINGS HAVE BEEN REVISED TO SHOW THIS ISLAND (MATCHING THE SPOT ELEVATION DIAGRAM ON SHEET ASI.3)

B ACCESSIBLE PARKING DETAIL PLAN
SCALE: 1" = 16'-0"

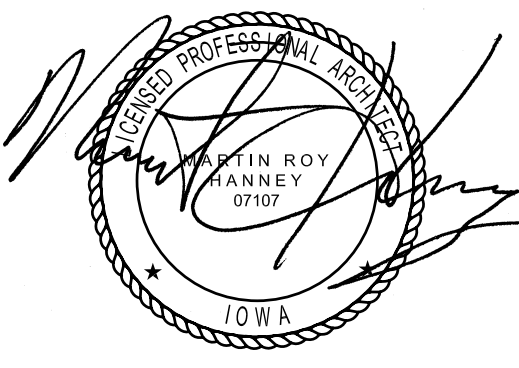


1 VAN ACCESSIBLE PARKING SIGN
SCALE: 1/2" = 1'-0"

2 ACCESSIBLE PARKING SIGN
SCALE: 1/2" = 1'-0"



3 HANDICAP PARKING SYMBOL
SCALE: 1/2" = 1'-0"



HANNEY & ASSOCIATES, ARCHITECTS
1726 South Hillside, Wichita, Kansas 67211
Phone (316) 683-8985
Fax (316) 684-1441

2022 GENESIS HEALTH CLUBS
SOUTHBRIDGE MALL
1111 East Army Post Road
Des Moines, Iowa 50315



DRAWINGS ISSUED			
NO.	DATE	ITEM	ISSUED
10	4/24/22	ADDENDUM 3	
9	2/11/22	PERMIT SET	
8	1/25/22	CHECK SET	
7	12/15/21	CHECK SET	
6	9/24/21	CHECK SET	
5	8/21/21	SITE PLAN REVIEW	
4	1/21/21	UDRB SUBMITTAL	
3	1/08/21	MILESTONE DEV. PLAN	
2	5/25/21	CONCEPT, DEV. PLAN	
1	3/20/21	CONCEPT, DEV. PLAN	

COMPUTER DRAWING
DMS_ASI04.dwg

DATE: AUGUST 2021
DRAWN BY: CHECKED BY:
MH, CH, DH, TH, TC MRH

SHEET
AS1.4
OF SHEETS