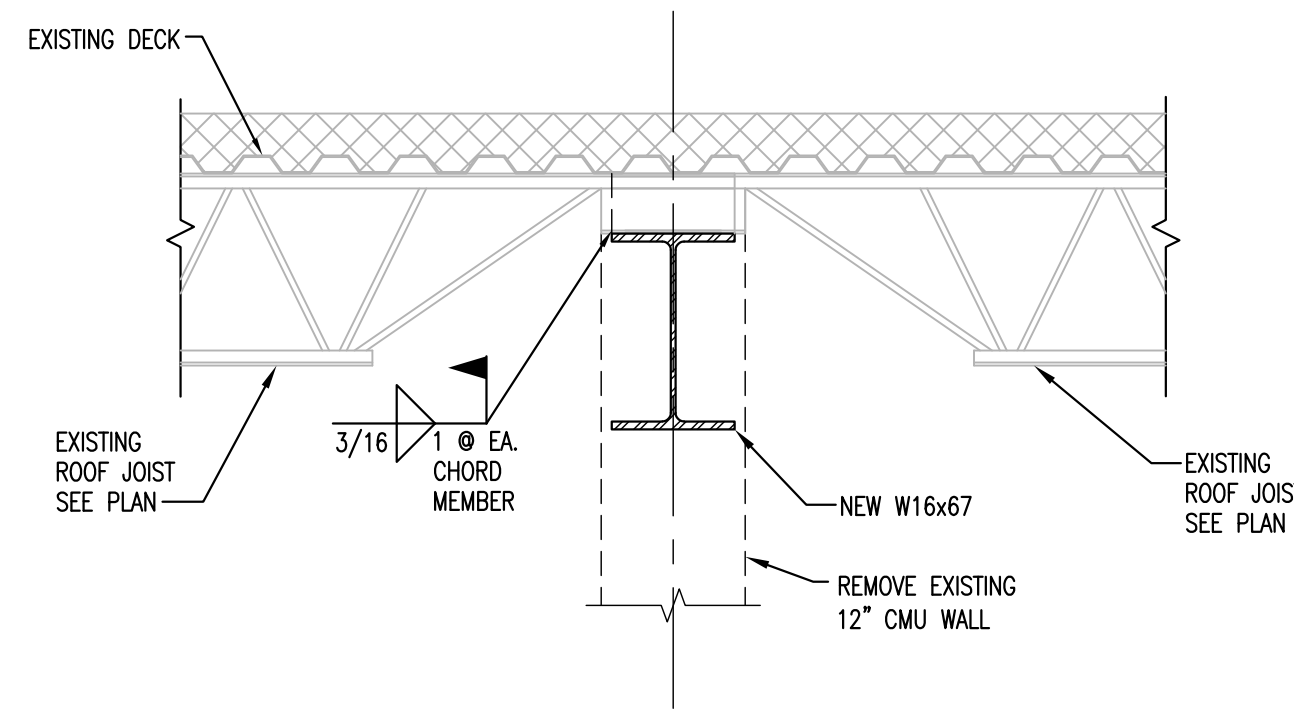
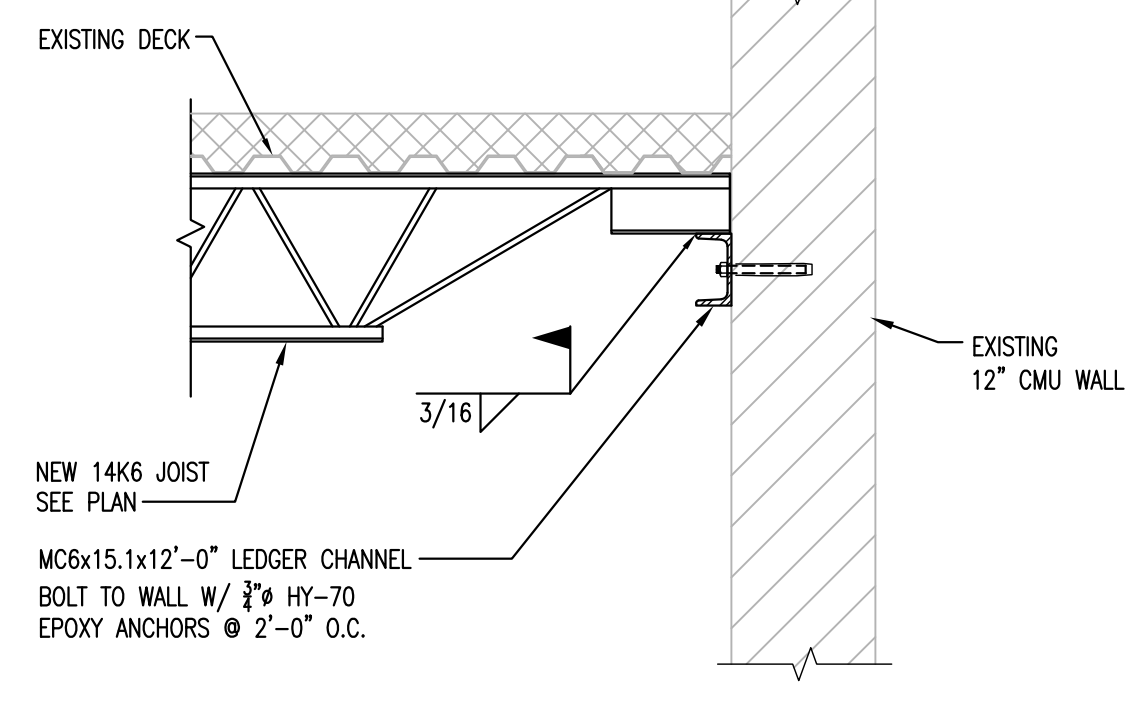


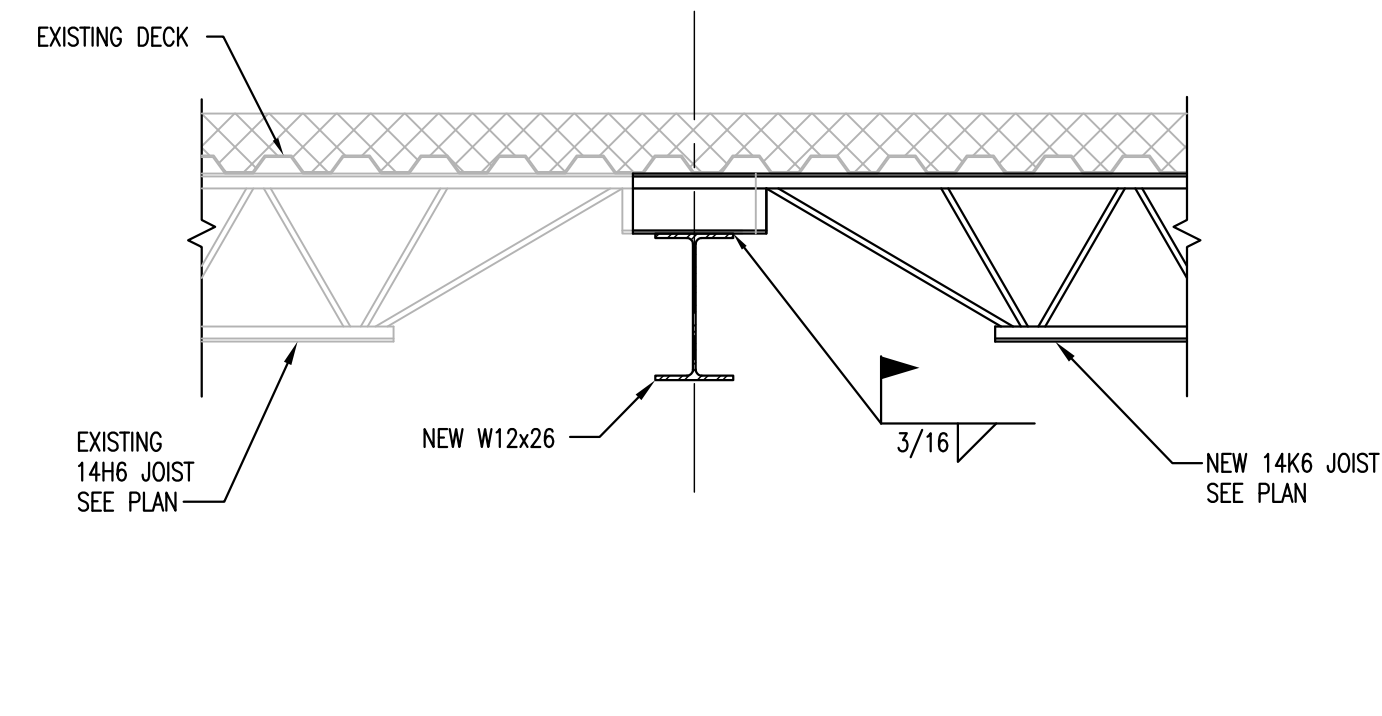
1  
S3.2  
3/4" = 1'-0"



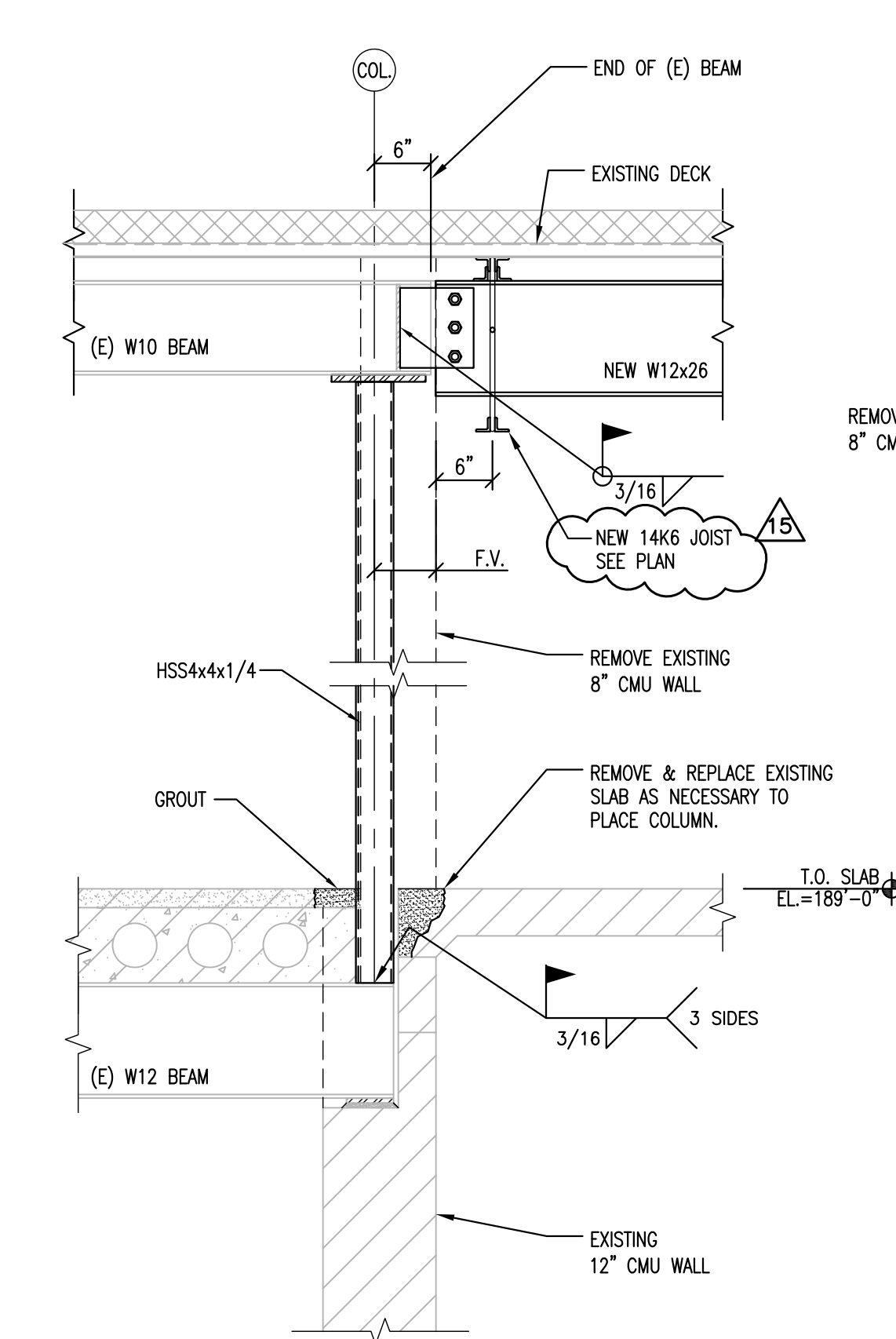
2  
S3.2  
3/4" = 1'-0"



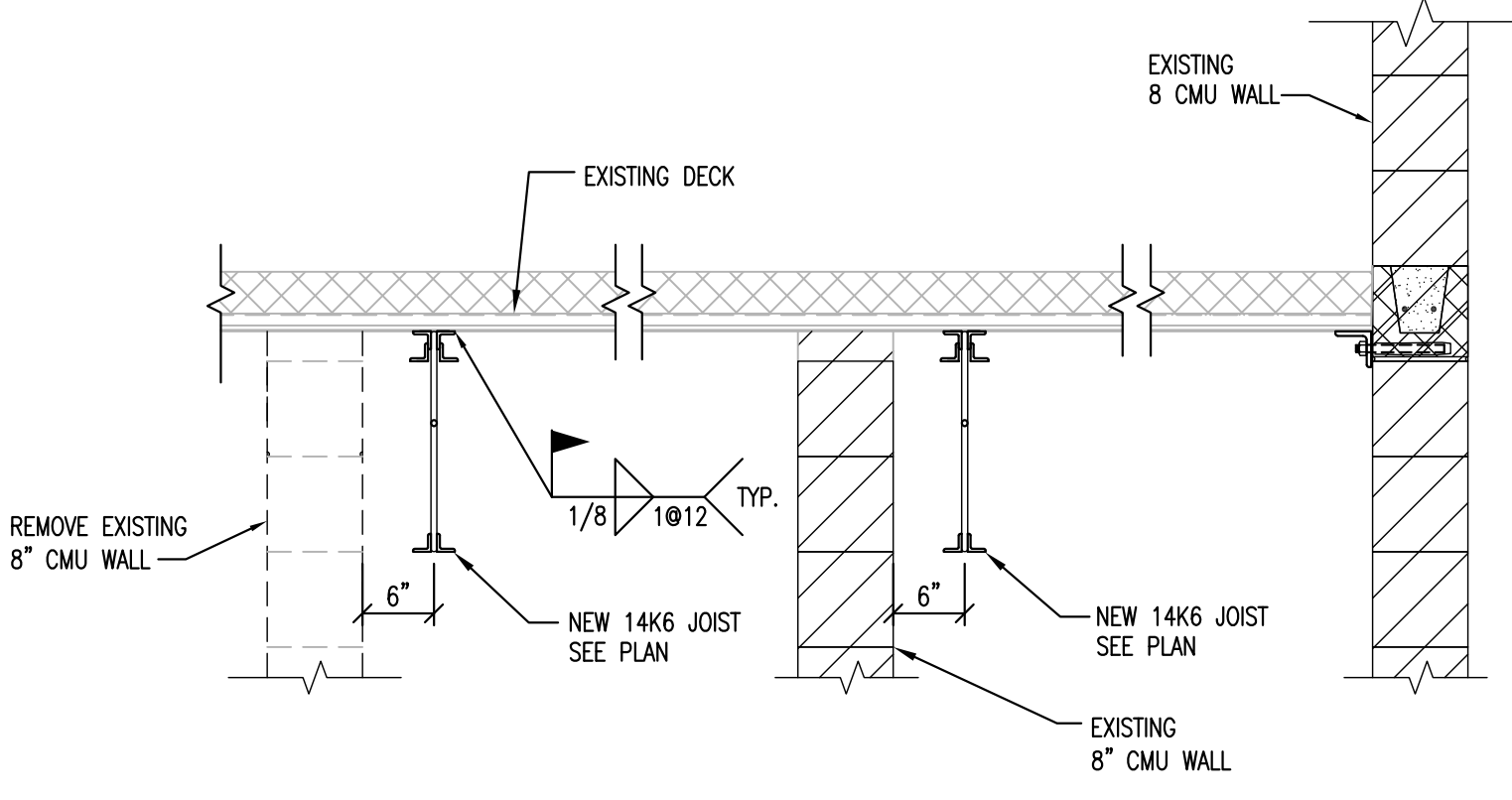
3  
S3.2  
3/4" = 1'-0"



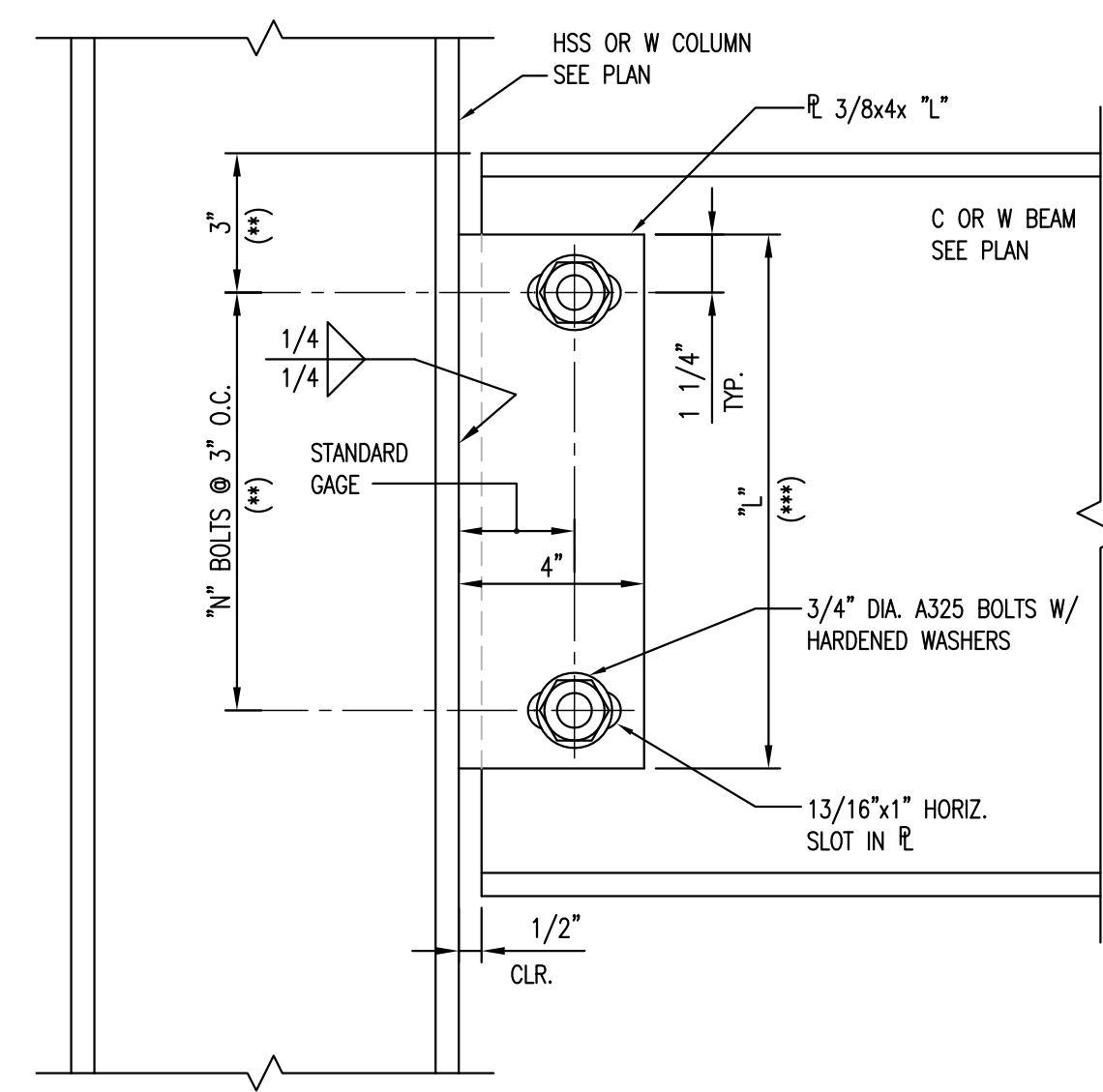
4  
S3.2  
3/4" = 1'-0"



5  
S3.2  
3/4" = 1'-0"



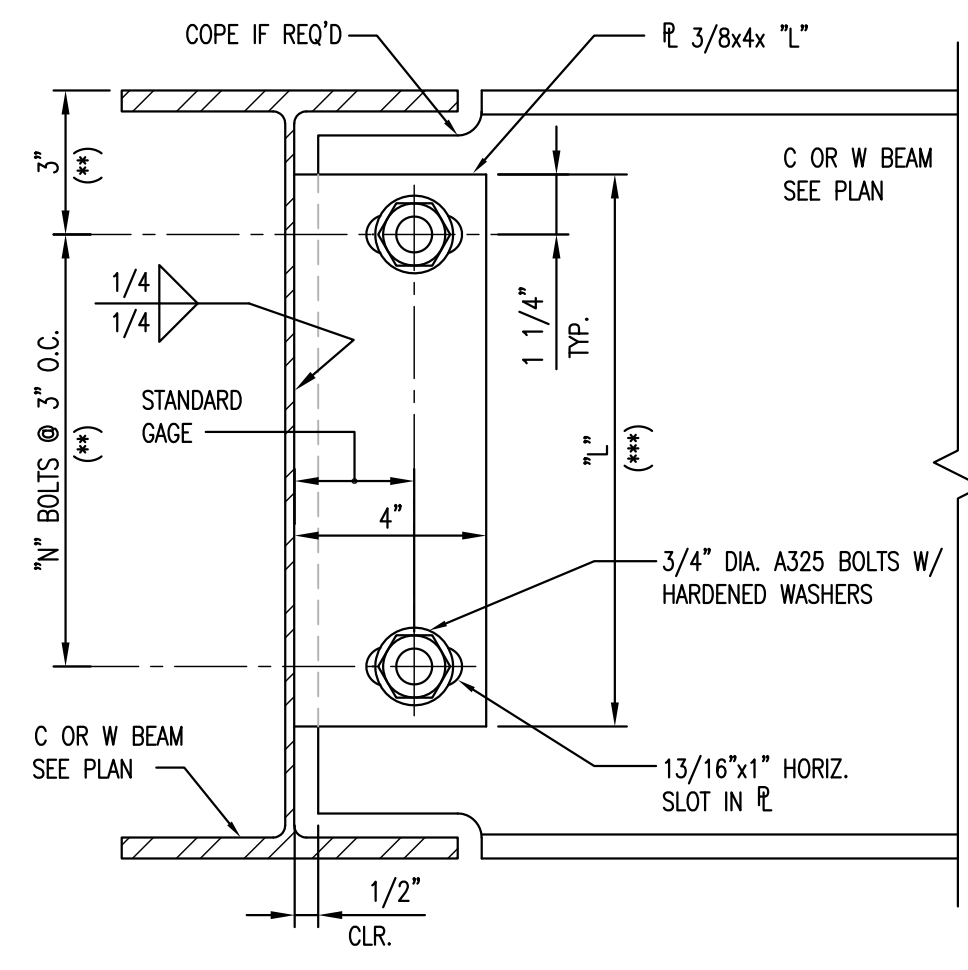
6  
S3.2  
3/4" = 1'-0"



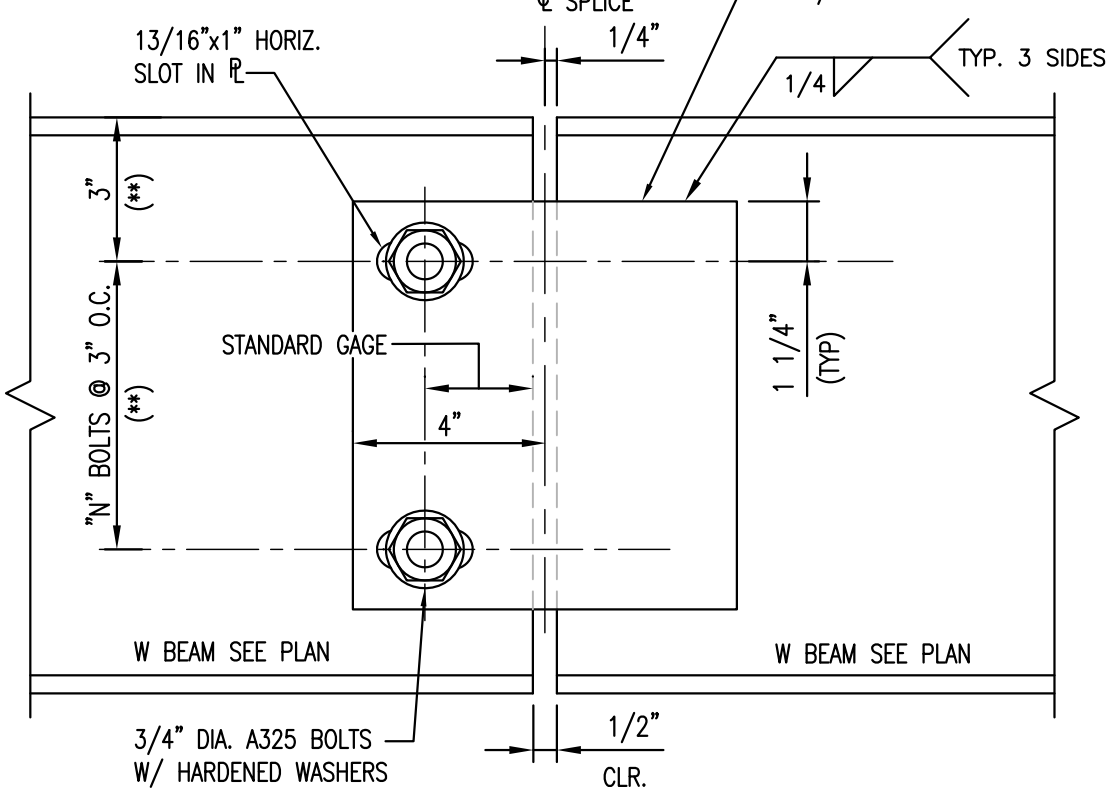
7  
S3.2  
3" = 1'-0"

PLATE & BOLT DATA		
NOMINAL BEAM DEPTH	"N" =	"L" = INCHES
7 OR <	2	3 (*)
8	2	5 1/2
10	3	8 1/2
12	3	8 1/2
14	3	8 1/2
16	4	11 1/2
18	5	14 1/2
21	6	17 1/2
24	7	20 1/2

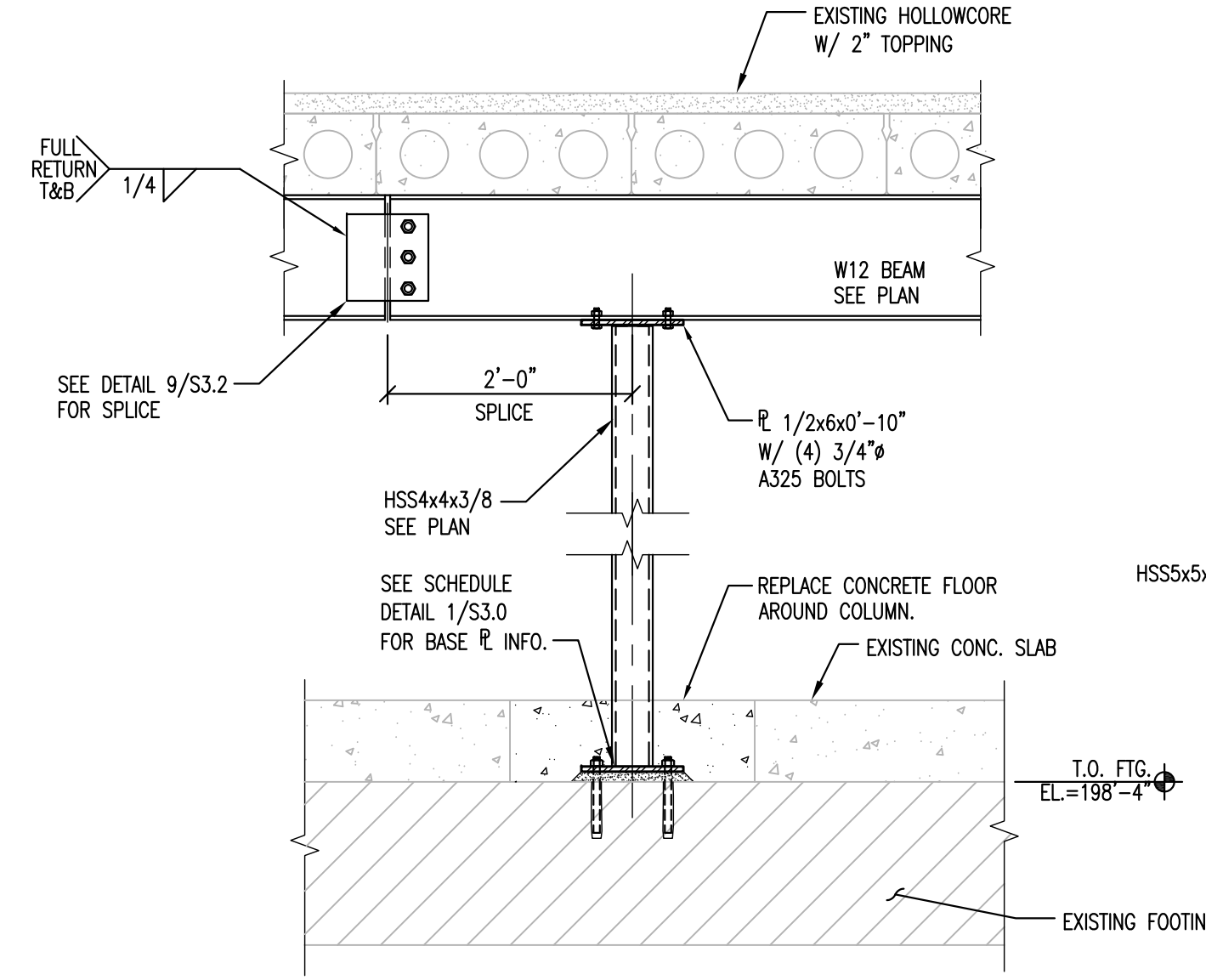
(\*) USE 2-L6x6x5/16 CLIP ANGLES W/ 2 BOLTS IN EACH LEG.  
 (\*\*) SPACING MAY BE DECREASED TO 2 1/2" IF REQUIRED.  
 (\*\*\*) LENGTH MAY BE DECREASED TO ACCOMMODATE BOLT SPACING.



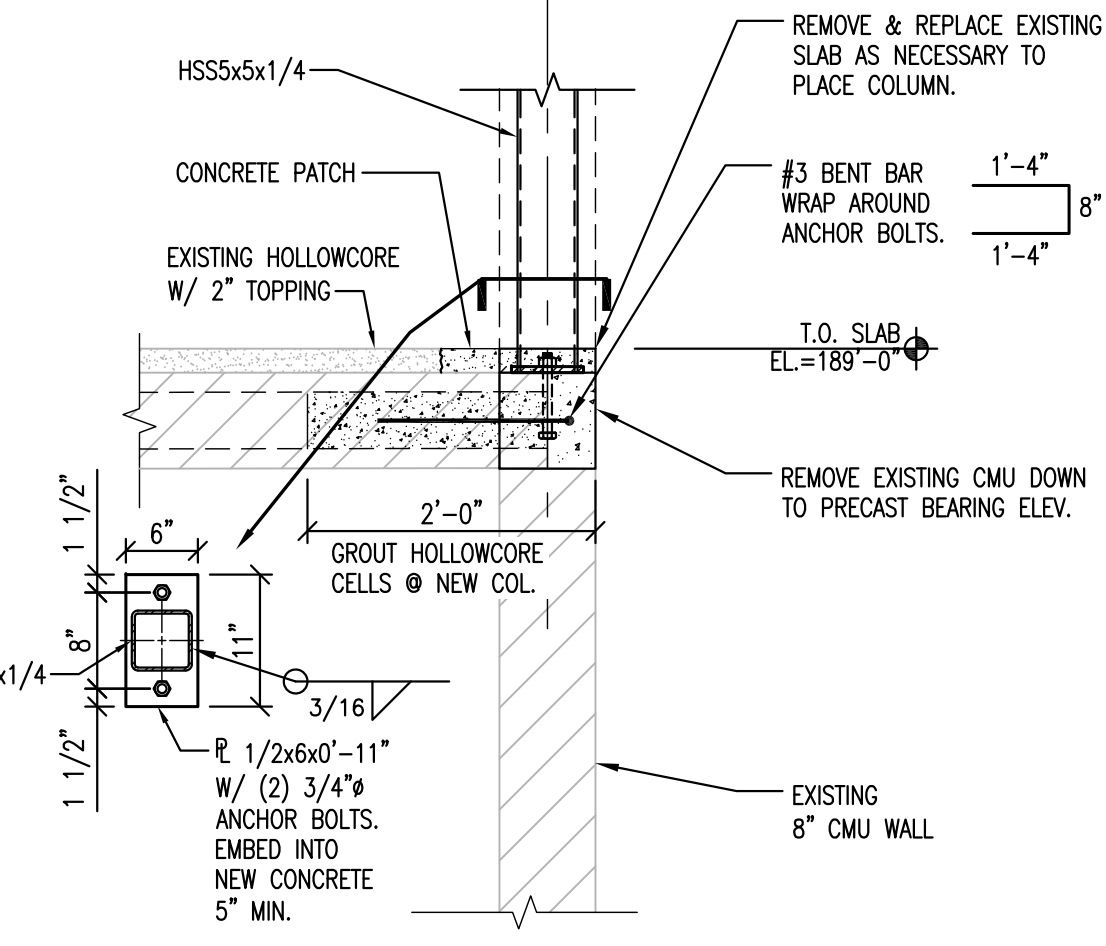
8  
S3.2  
3" = 1'-0"



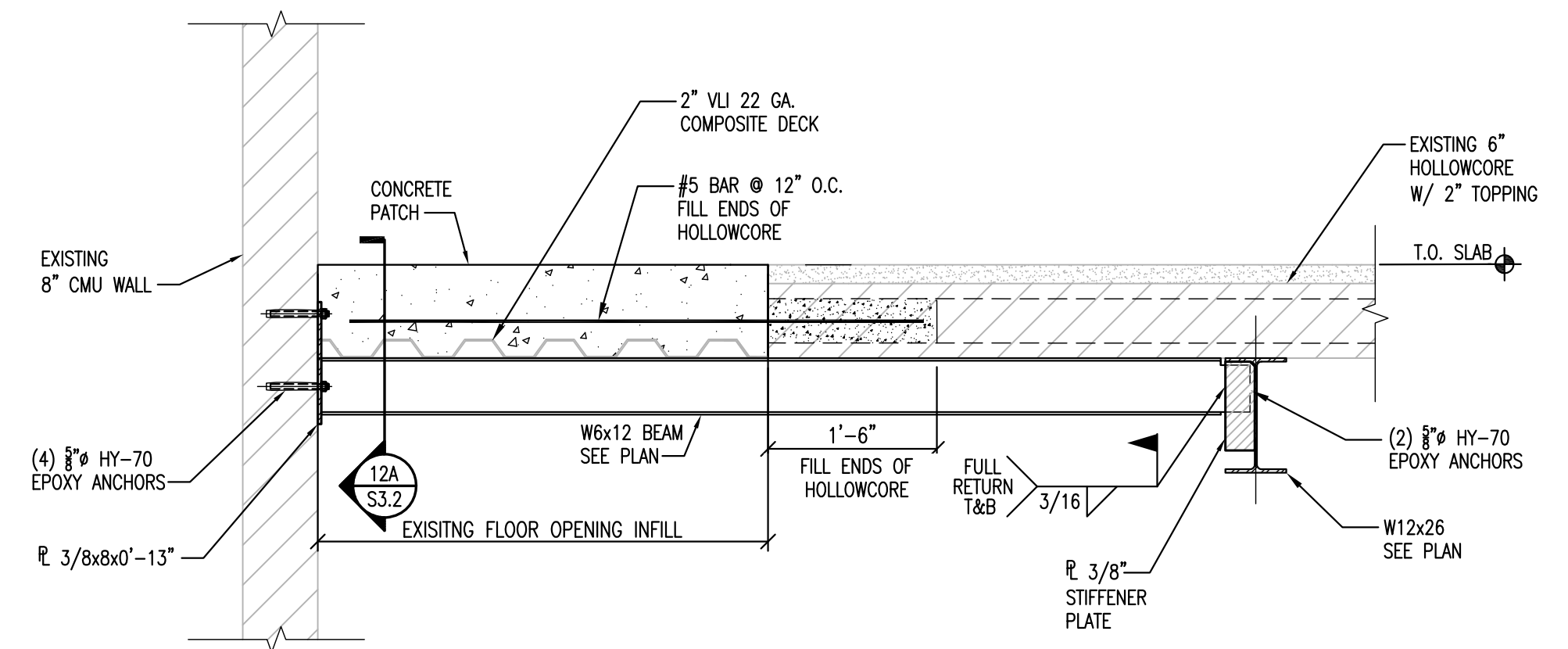
9  
S3.2  
3" = 1'-0"



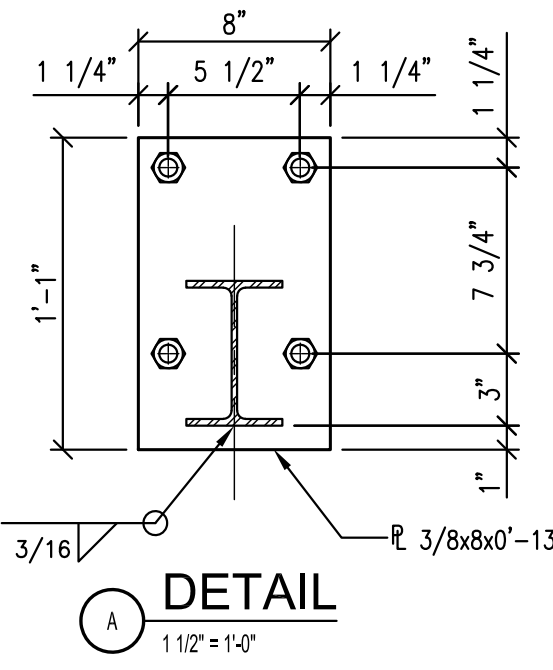
10  
S3.2  
3/4" = 1'-0"



11  
S3.2  
3/4" = 1'-0"



12  
S3.2  
3/4" = 1'-0"



**PERFORMANCE Engineering**  
 389 Perry St., Suite 204A - Casler Rock, CO 80704  
 (903) 721-3322  
 PE #: 181126

**HANNEY & ASSOCIATES, ARCHITECTS**  
 1726 South Hillside, Wichita, Kansas, 67211  
 Phone: (316) 683-8965  
 Fax: (316) 684-1441

**GENESIS ARCHITECTS**  
 MARTIN J. WEDENMAN  
 E-688  
 STATE OF NEBRASKA

2019  
**GENESIS HEALTH CLUBS WESTROADS**  
 1212 NORTH 102ND STREET  
 OMAHA, NE 68114



DRAWINGS ISSUED			
NO.	DATE	ITEM	ISSUED
15	10/10/19	ADDENDUM #3	
14	04/22/19	ISSUED FOR BID	
13	02/18/19	REVIEW	
12	01/24/19	REVIEW	
11	01/08/19	REVISIONS	
10	12/19/18	REVIEW	
9	11/27/18	REVIEW	

COMPUTER DRAWING

DATE: APRIL 2019  
 DRAWN BY: CHECKED BY:  
 SLM MJM

SHEET  
**S3.2**  
 OF SHEETS