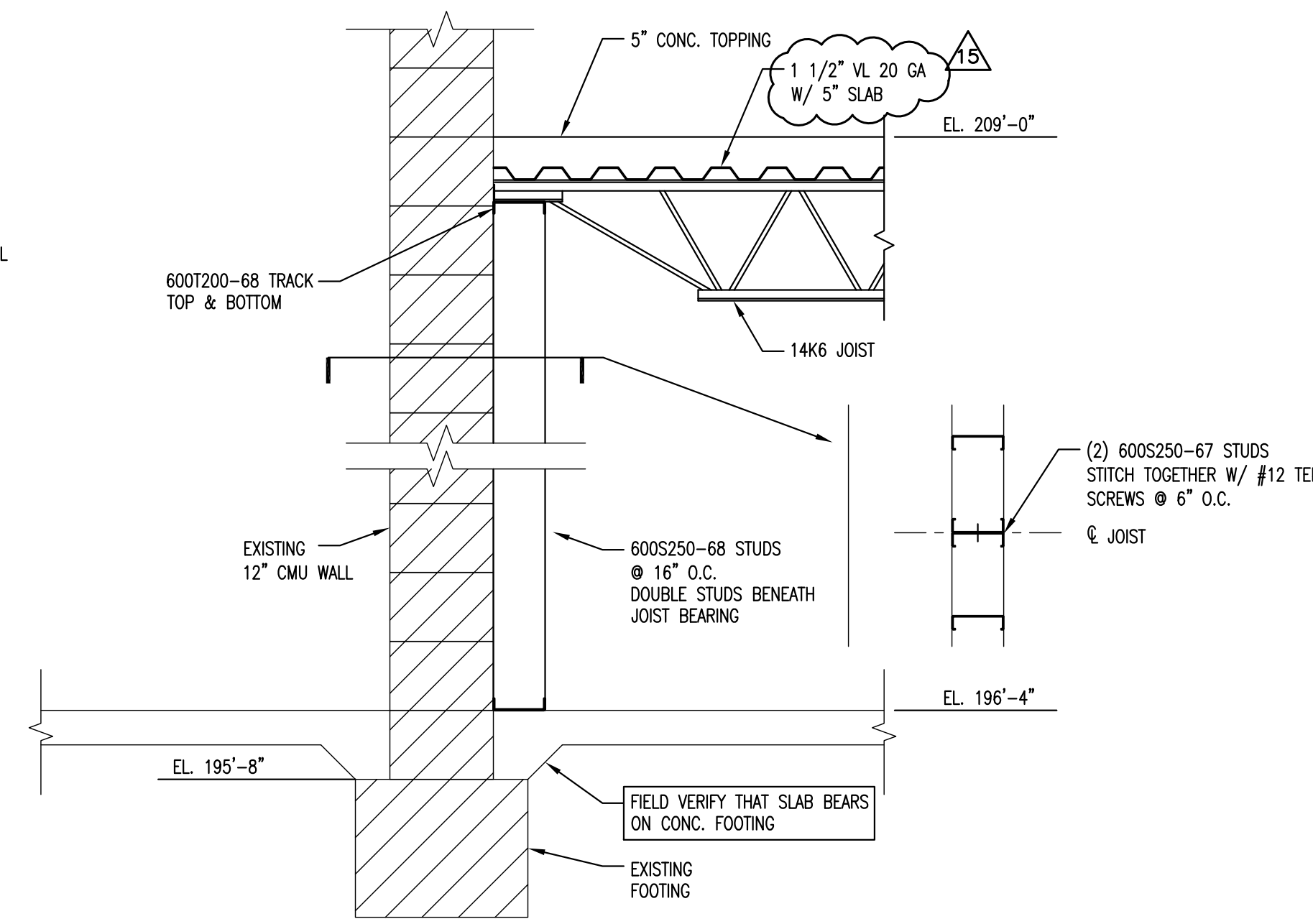
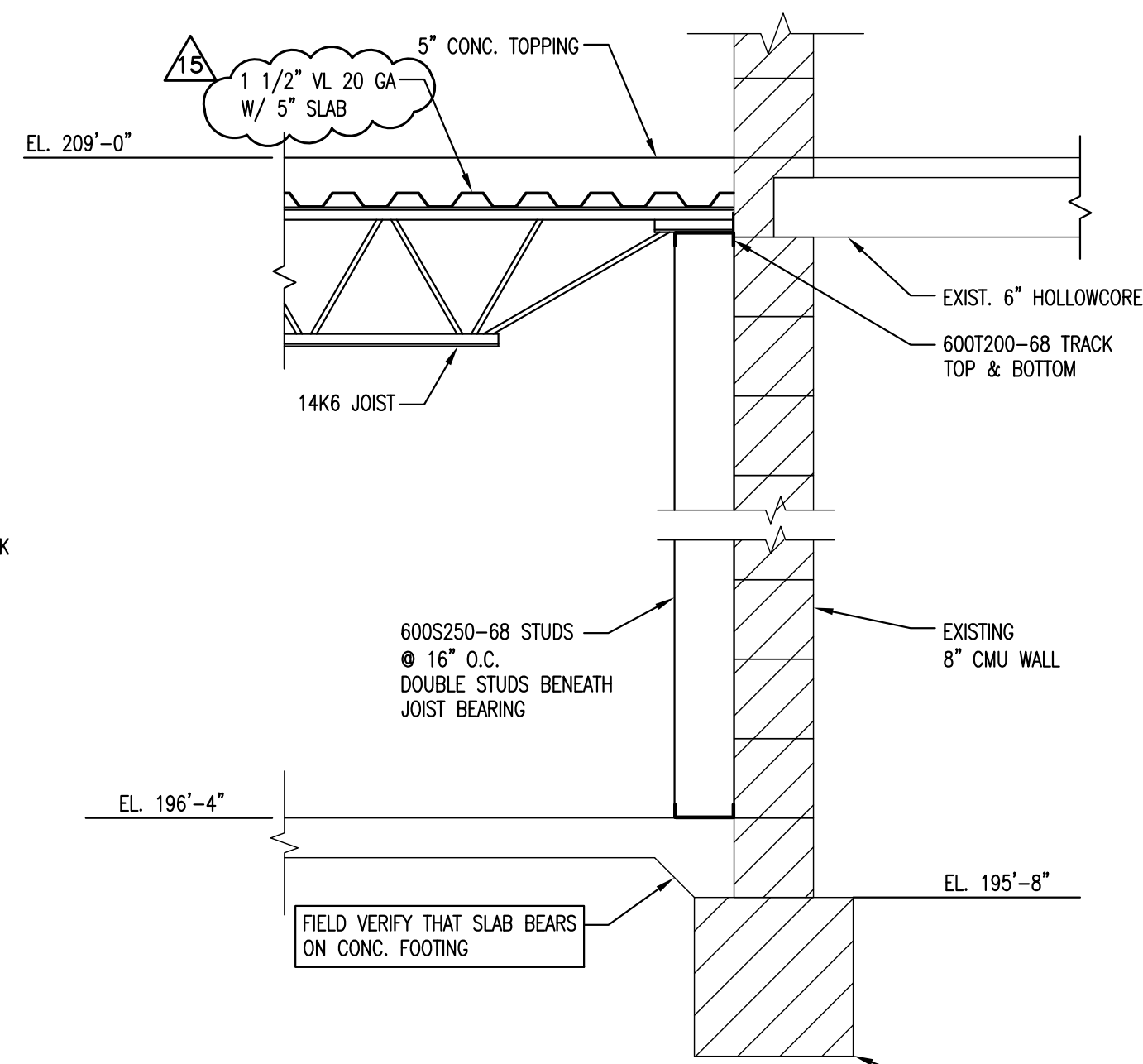


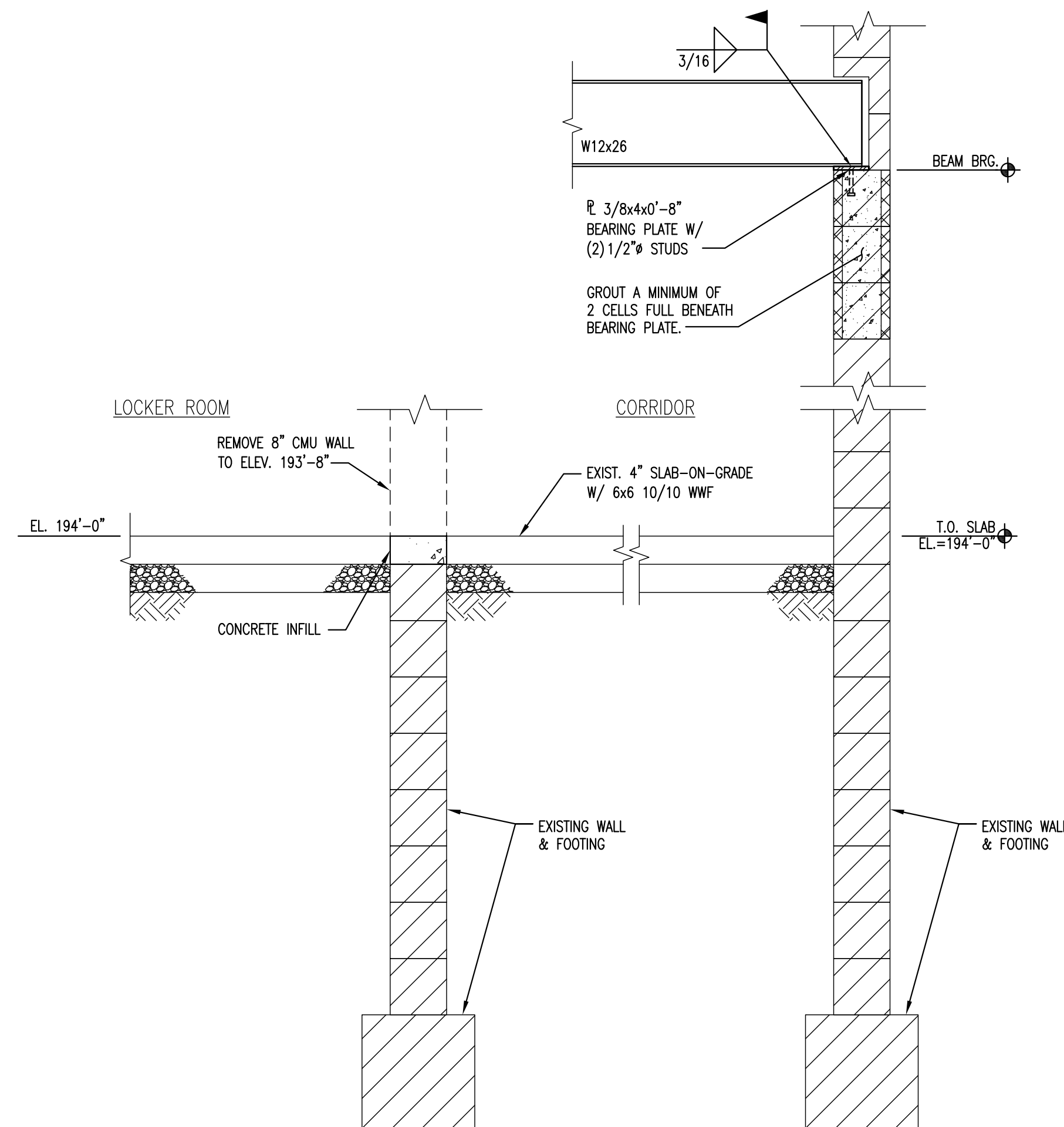
1 SECTION
S3.1 3/4" = 1'-0"



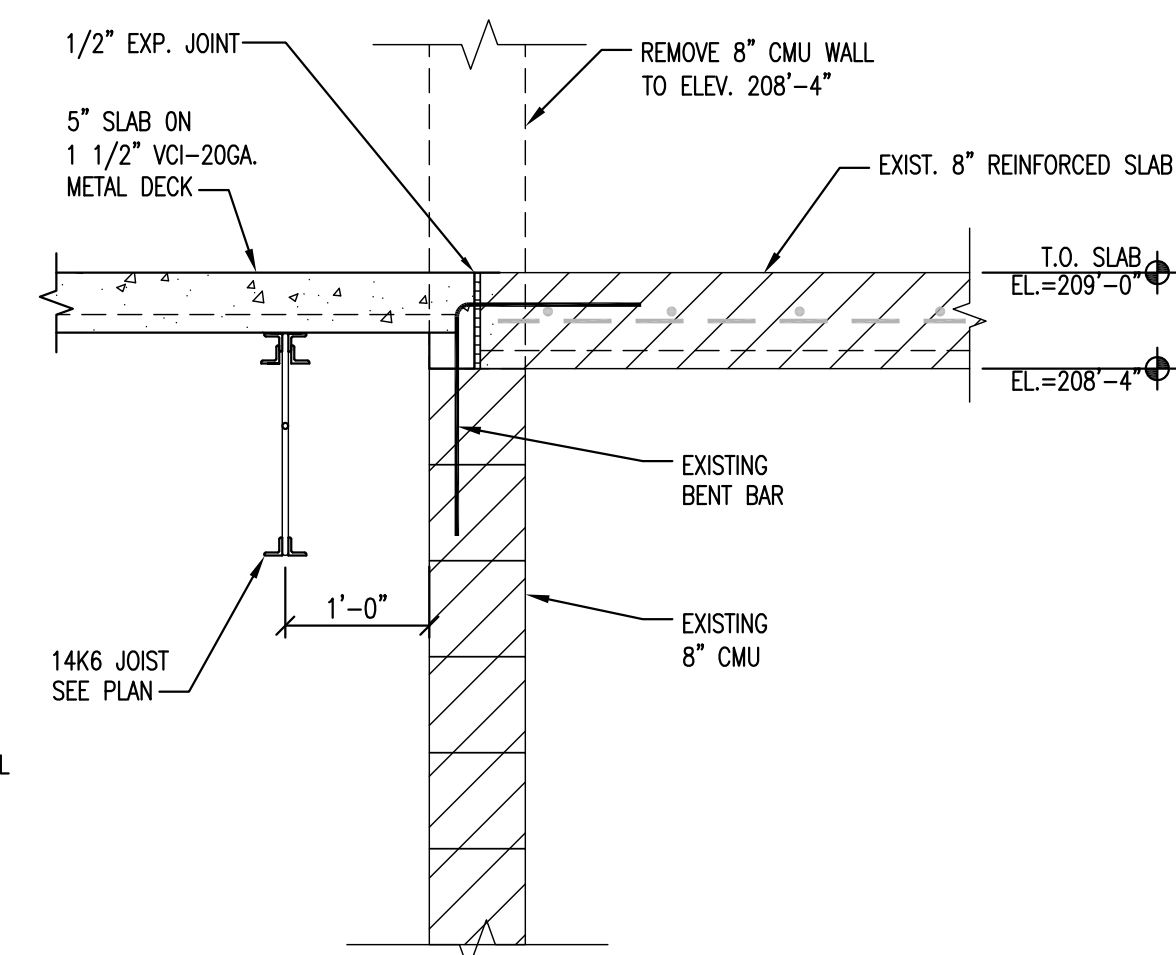
2 SECTION
S3.1 3/4" = 1'-0"



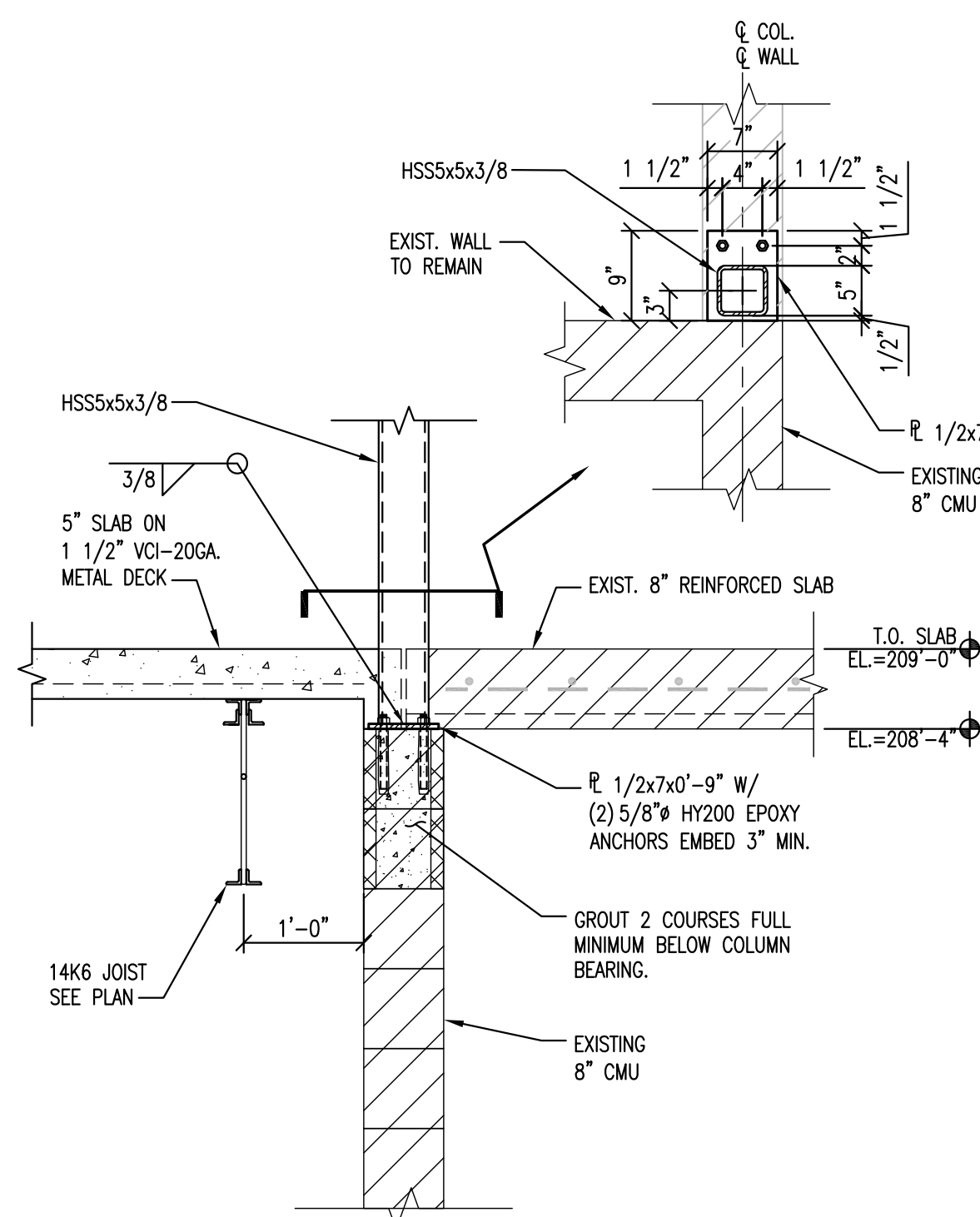
3 SECTION
S3.1 3/4" = 1'-0"



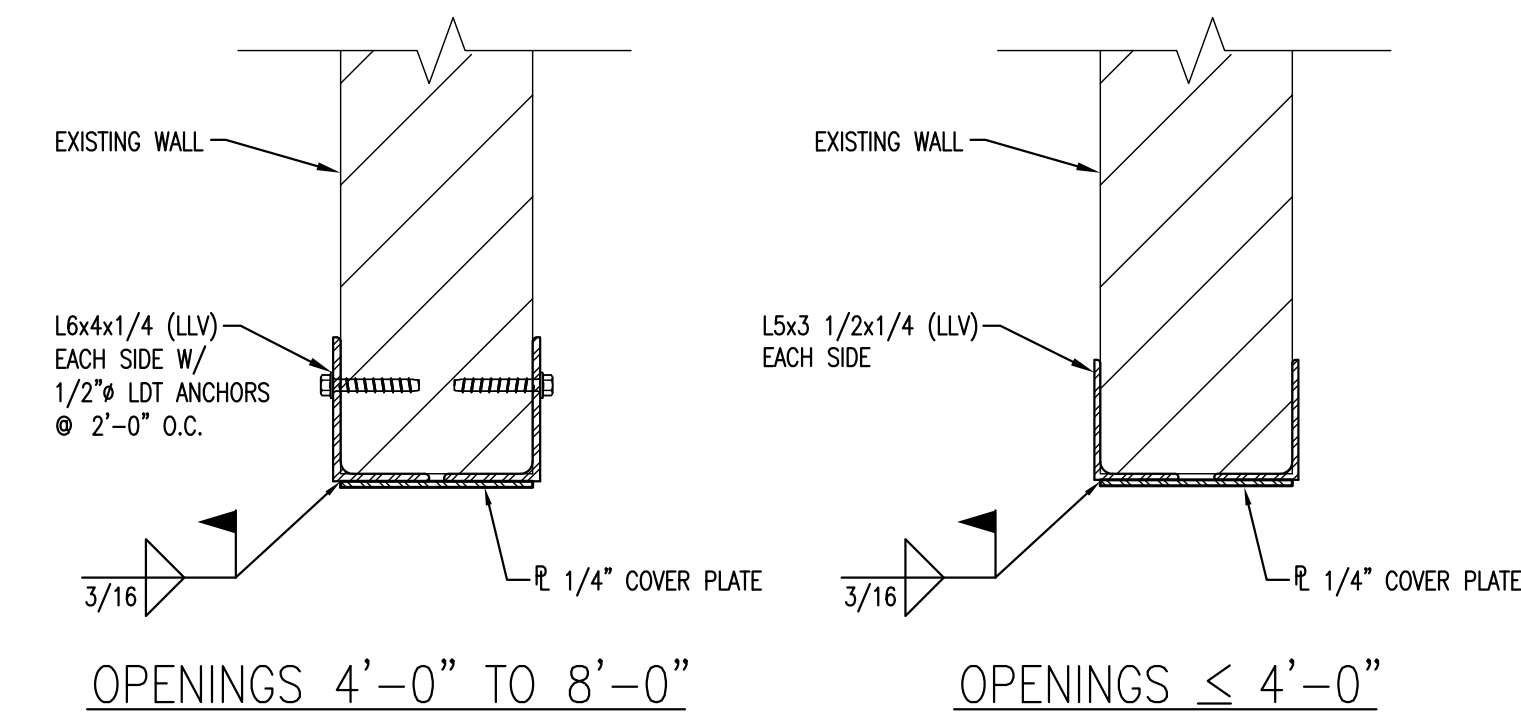
4 SECTION
S3.1 3/4" = 1'-0"



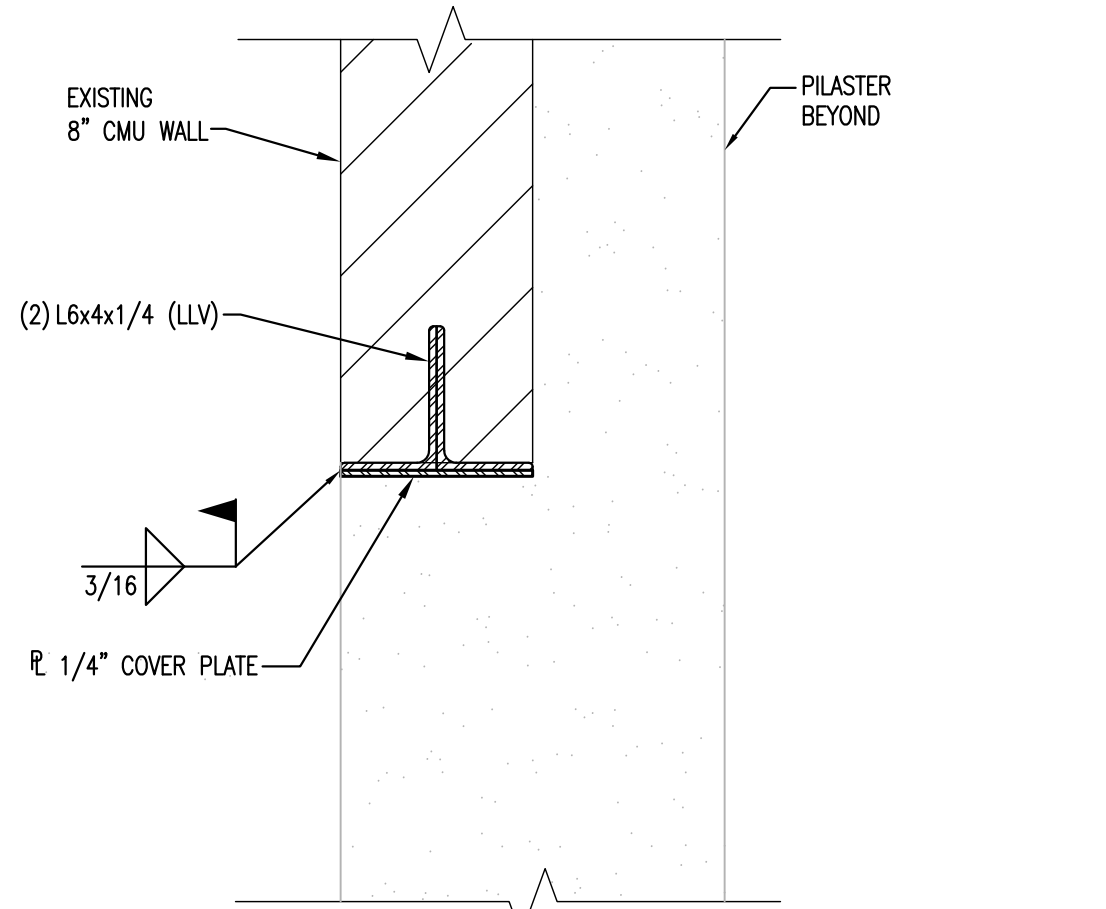
5 SECTION
S3.1 3/4" = 1'-0"



6 SECTION
S3.1 3/4" = 1'-0"



7 LINTEL @ DOOR OPENING
S3.1 1 1/2" = 1'-0"



8 LINTEL @ POOL WALL OPENING
S3.1 1 1/2" = 1'-0"

PERFORMANCE Engineering
 1811 Ford Street, Suite 104 - Omaha, NE 68164
 389 Perry St., Suite 204A - Casper Rock, CO 80704
 (402) 343-3960 Fax: (402) 343-3961 PE #: 181126

ARCHITECTS
 HANNEY & ASSOCIATES, ARCHITECTS
 1726 South Hillside, Wichita, Kansas, 67211
 Phone: (316) 683-8965 Fax: (316) 684-1441

2019
GENESIS HEALTH CLUBS WESTROADS
 1212 NORTH 102ND STREET
 OMAHA, NE 68114



DRAWINGS ISSUED			
NO.	DATE	ITEM	ISSUED
15	10/10/19	ADDENDUM #3	
14	04/22/19	ISSUED FOR BID	
13	02/18/19	REVIEW	
12	01/24/19	REVIEW	
11	01/08/19	REVISIONS	
10	12/19/18	REVIEW	
9	11/27/18	REVIEW	

COMPUTER DRAWING

DATE: APRIL 2019
 DRAWN BY: CHECKED BY:
 SLM MJM

SHEET
S3.1
 OF - SHEETS