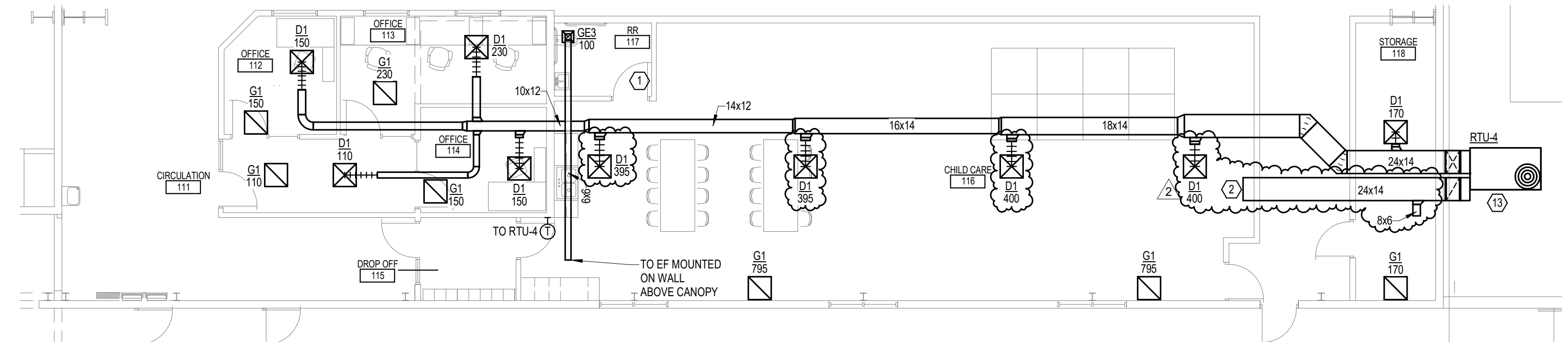
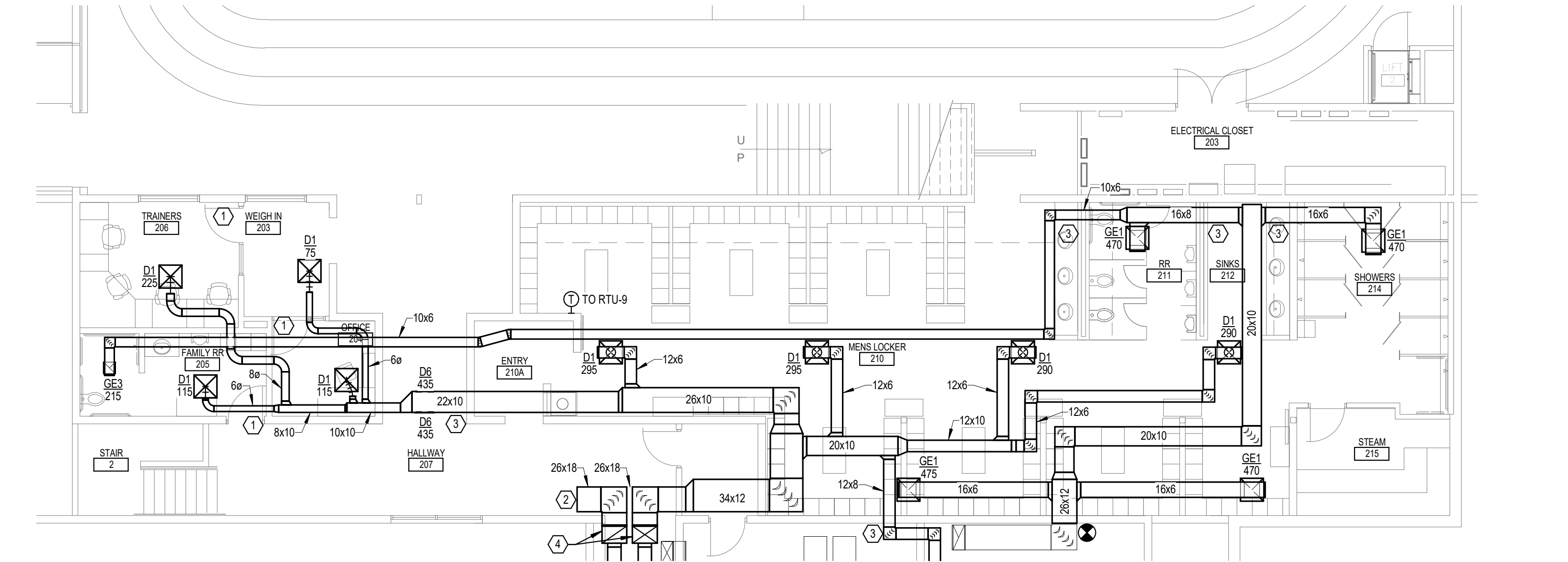


HANNAY & ASSOCIATES, ARCHITECTS
 1726 South Hillside, Wichita, Kansas, 67211
 Phone: (316) 883-8985
 Fax: (316) 684-1441

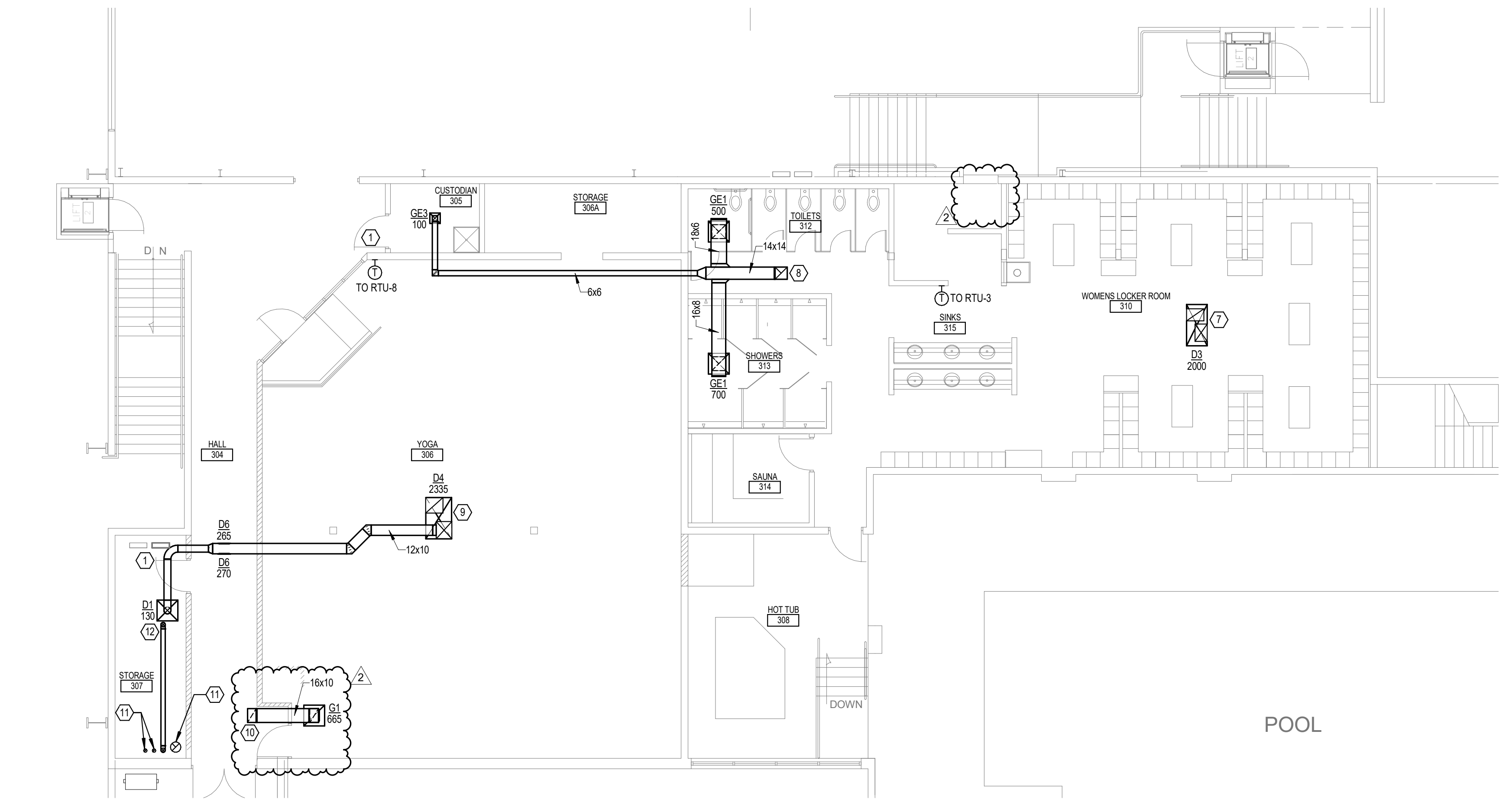
2019 GENESIS HEALTH WESTROADS
 1212 NORTH 162ND STREET
 OMAHA, NE 68114



1 ENLARGED CHILD CARE - DUCTWORK
 1/8" = 1'-0"



2 ENLARGED MEN'S LOCKER - DUCTWORK
 1/8" = 1'-0"



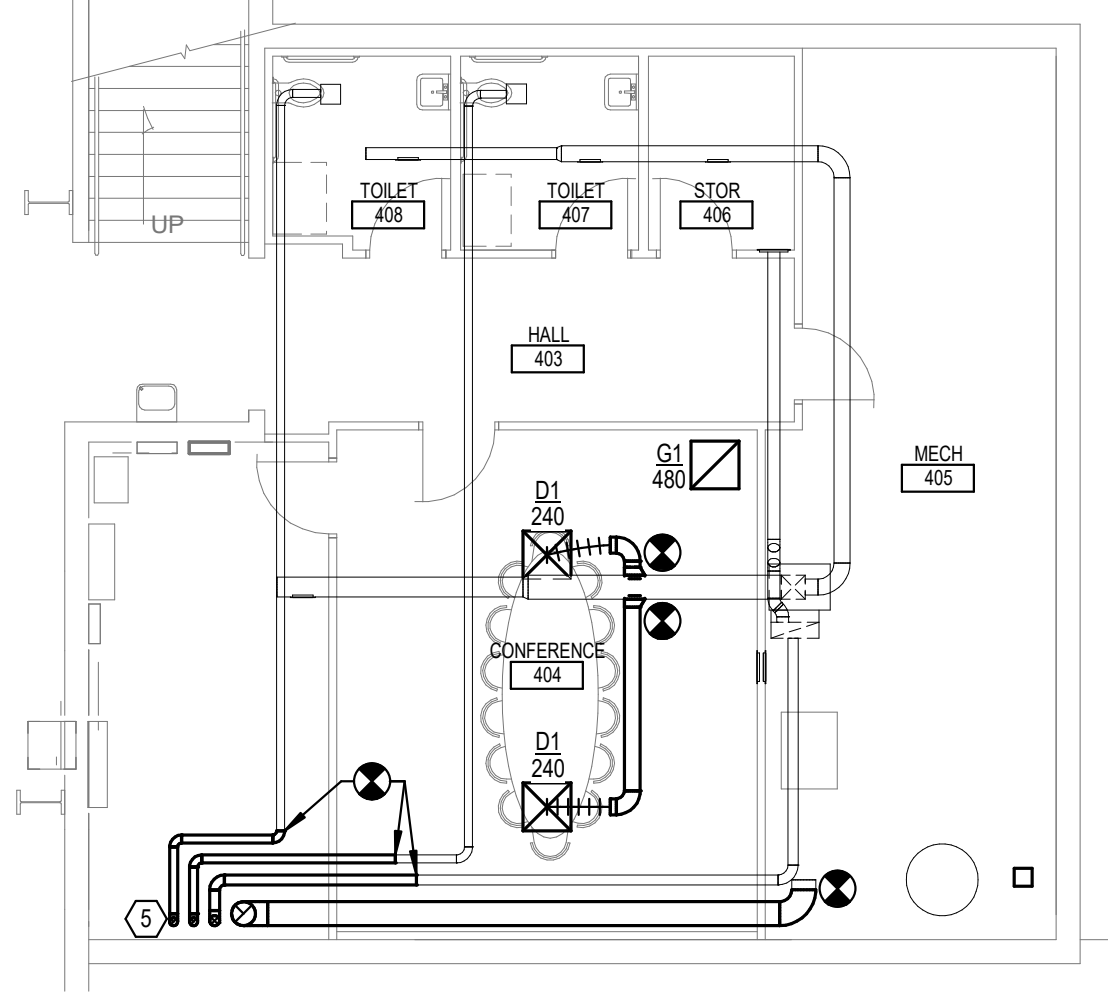
3 ENLARGED WOMEN'S LOCKER - DUCTWORK
 1/8" = 1'-0"

GENERAL NOTES:

- COVER SHEET GENERAL NOTES APPLY TO ALL SHEETS.
- ON DEMOLITION PLANS, EXISTING MECHANICAL SYSTEMS TO BE REMOVED ARE SHOWN DASHED, EXISTING MECHANICAL SYSTEMS TO REMAIN ARE SHOWN LIGHT LINE WEIGHT. ON ALL OTHER PLANS, NEW MECHANICAL SYSTEMS ARE INDICATED WITH HEAVY LINE WEIGHTS.
- UNLESS NOTED OTHERWISE, DETAILS SHOWN WITHIN THESE DOCUMENTS ARE APPLICABLE FOR ALL PIPING, EQUIPMENT AND DUCTWORK INSTALLATIONS WHETHER OR NOT SPECIFICALLY NOTED.
- THE OWNER AND ENGINEER ARE NOT RESPONSIBLE FOR THE CONTRACTOR'S SAFETY PRECAUTIONS OR FOR THE MEANS, METHODS, TECHNIQUES, CONSTRUCTION SEQUENCES, OR PROCEDURES REQUIRED TO PERFORM THIS WORK.
- CONTRACTOR SHALL COORDINATE ALL WORK IN ALL AREAS WITH OWNER PRIOR TO PROCEEDING.
- FOR EACH INDIVIDUAL DIFFUSER, REGISTER, AND GRILLE, PROVIDE VOLUME DAMPER AT BRANCH TAKEOFF. WHEREVER POSSIBLE, LOCATE VOLUME DAMPER ABOVE ACCESSIBLE CEILING. WHERE VOLUME DAMPERS ARE LOCATED ABOVE GYPBOARD CEILING, PROVIDE CABLE OPERATED DAMPER WITH CEILING PLUG.

SHEET NOTES:

- CONTRACTOR SHALL UNDER CUT DOOR 1" FOR AIR TRANSFER.
- OPEN END RETURN AIR DUCT TO BE COVERED WITH 3/4x3/4 WIRE MESH.
- CONTRACTOR SHALL RUN DUCT THROUGH EXISTING MASONRY OPENING. MODIFY OPENING AS NECESSARY.
- PROVIDE 28x16 SUPPLY AND RETURN AIR DUCTS UP THROUGH NEW CHASE TO RTU-9 ON ROOF.
- CONTRACTOR SHALL RELOCATE EXISTING WATER HEATER FLUE, OUTDOOR AIR DUCT AND TWO EXHAUST DUCTS UP THROUGH NEW CHASE. FIELD VERIFY EXACT SIZES AND LOCATIONS.
- NOT USED.
- PROVIDE 28x14 SUPPLY AND RETURN AIR DUCTS UP FORM CONCENTRIC SUPPLY/RETURN DIFFUSER TO RTU-3 ON ROOF.
- PROVIDE 14x14 EXHAUST AIR DUCT UP TO EF-3 ON ROOF.
- PROVIDE 20x18 SUPPLY AND RETURN AIR DUCTS UP FORM CONCENTRIC SUPPLY/RETURN DIFFUSER TO RTU-3 ON ROOF.
- TURN OPEN END RETURN AIR TRANSFER DUCT UP AND COVER WITH 3/4x3/4 WIRE MESH.
- CONTRACTOR SHALL RUN NEW WATER HEATER FLUE AND TWO EXHAUST DUCTS UP THROUGH NEW CHASE TO ROOF. TERMINATE IN ACCORDANCE WITH ALL FEDERAL, STATE AND LOCAL CODES.
- CONTRACTOR SHALL RUN NEW OUTDOOR AIR DUCT UP THROUGH NEW CHASE AND OFFSET A MINIMUM OF 10'-0" FROM ANY EXHAUST OUTLET THROUGH ROOF. TERMINATE IN ACCORDANCE WITH ALL FEDERAL, STATE AND LOCAL CODES.
- CONTRACTOR SHALL FIELD COORDINATE EXACT LOCATION OF GRADE MOUNTED RTU WITH OWNER.



4 ENLARGED CONFERENCE - DUCTWORK
 1/8" = 1'-0"

DRAWINGS ISSUED		
NO.	DATE	ITEM ISSUED
2	10/04/19	ADDENDUM #2
1	04/22/19	ISSUED FOR BID

COMPUTER DRAWING

DATE: APRIL 2019
 DRAWN BY: SMC
 CHECKED BY: EGS

SHEET

M3.5

OF SHEETS

2019 © COPYRIGHT
 PERMISSION TO REPRODUCE ANY PART OF THIS DOCUMENT IS HEREBY GRANTED SOLELY FOR THE PURPOSE OF THE CONSTRUCTION OF THE PROJECT OR THE ARCHIVING OF THIS PROJECT. UNAUTHORIZED USE OF THIS DOCUMENT WITHOUT THE WRITTEN PERMISSION OF SPECIALIZED ENGINEERING SOLUTIONS IS PROHIBITED BY COPYRIGHT LAW.
 DO NOT SCALE DRAWING. ALL DIMENSIONS AND CLEARANCES SHALL BE VERIFIED FROM APPROPRIATE SOURCES. ALL WORK SHALL BE COORDINATED PRIOR TO INSTALLATION. SEE SPECIFICATIONS.

SPECIALIZED ENGINEERING SOLUTIONS
 10360 Ellison Circle
 Omaha, NE 68134
 Phone: 402.991.5520
 www.specializedeng.com

SES PROJECT # 18435

BIM 360//18435 - Genesis Health Club Westroads/18435_Genesis_Westroads_SES_2017.rvt
 10/6/2019 5:20:02 PM