

FIREFLOW TEST DATA		
Date of test	Foreman's Page	13-Fe
	IDNUM for residual hydrant	1006101
Location of flowed hydrant-1 10110 Nicholas St.; Hydrant #40005839	Location of Residual Hydrant 99th St. & Nicholas St.; Hydrant #40005838	
Location of flowed hydrant-2		
Location of flowed hydrant-3	System Type USGS Elevation	Zone 2 1170
Location of flowed hydrant-4		

Flow Hydrant Data					Residual Hydrant Data	
	Flow-1	Flow-2	Flow-3	Flow-4		
Static Pressure	80	0	0	0	Static Pressure	80
# Outlets flowed	1	0	0	0		
Outlet Diameter	4	0	0	0	Residual Pressure	70
Pitot Pressure	45	0	0	0	Pressure Drop	10
C factor	0.9	0	0	0	Flow at 20 PSI	869
Flow in GPM	2879	0	0	0		

Remarks
Flowed Hydrant was opened all of the way.

10/03/2019

Specialized Engineering Solutions
ATTN: Aaron Anderson
PHONE: 402-991-5520
FAX:

REQUESTED LOCATION: 1212 N 102nd Street

This confirms the water flow test information requested by you or your representative. The Metropolitan Utilities District does not guarantee the accuracy of this information.

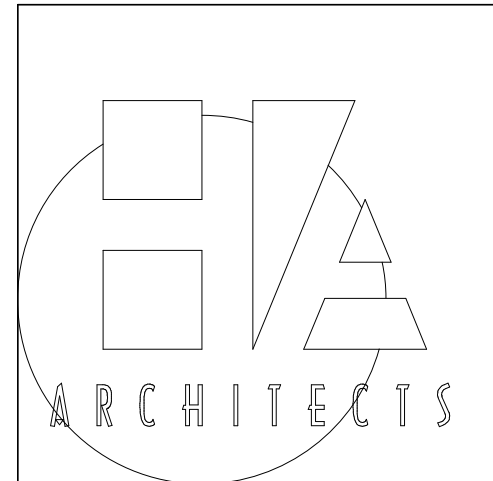
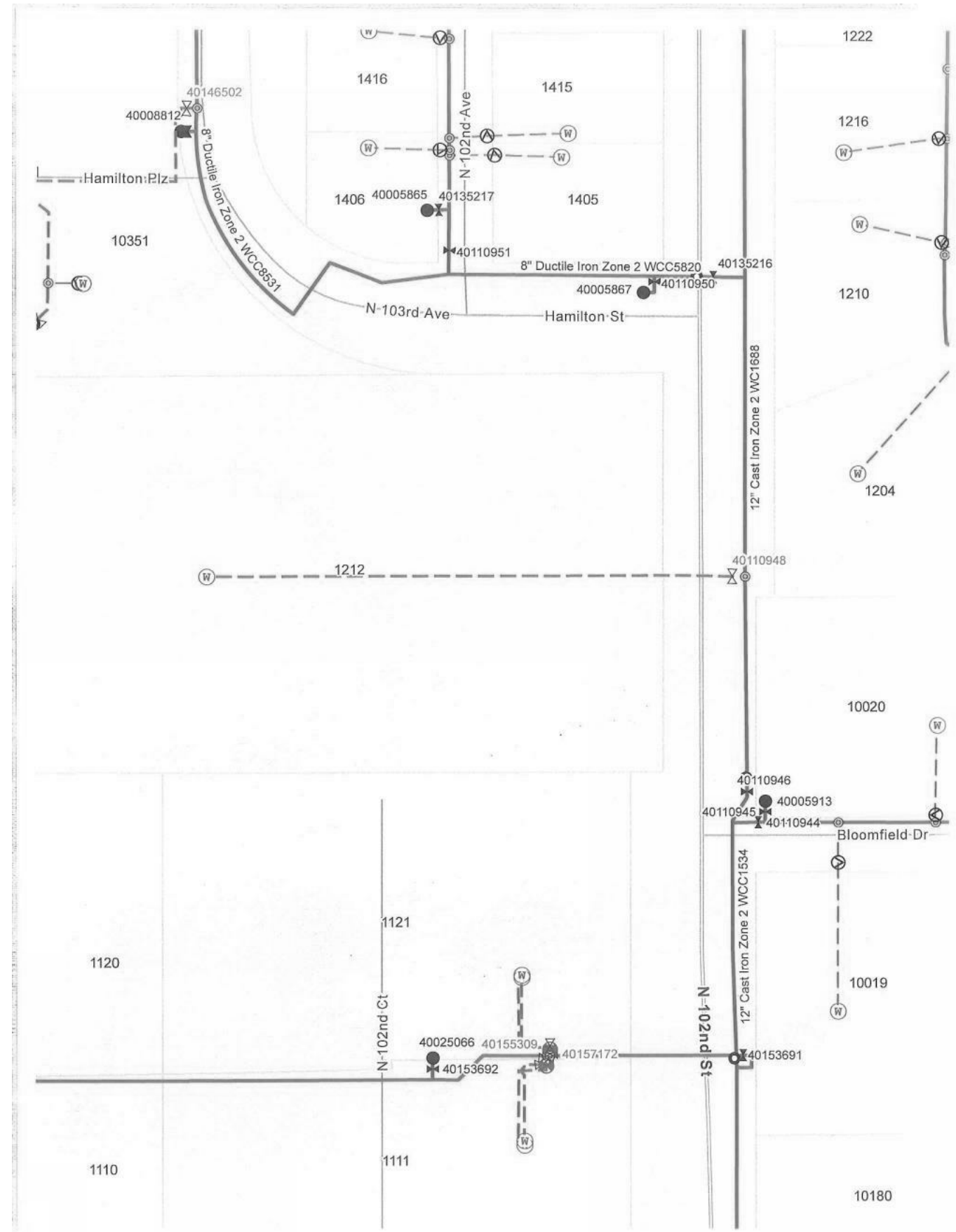
Find enclosed a copy of the latest flow test dated 2/4/2016, in the locality of your requested location. The test hydrants may be found on the District's Foreman's book, page 13-Fe. The flows on the attached test are valid for the static water pressure existing at the time of the test. At the residual hydrant, 99% of the time the static pressure will range from a high of 98 PSIG to a low of 81 PSIG. The seasonal adjusted average static water pressure is 88 PSIG. The residual hydrant pressures are relative to a USGS elevation of 1170 feet.

Information furnished by:

Brett Bleske
Engineer

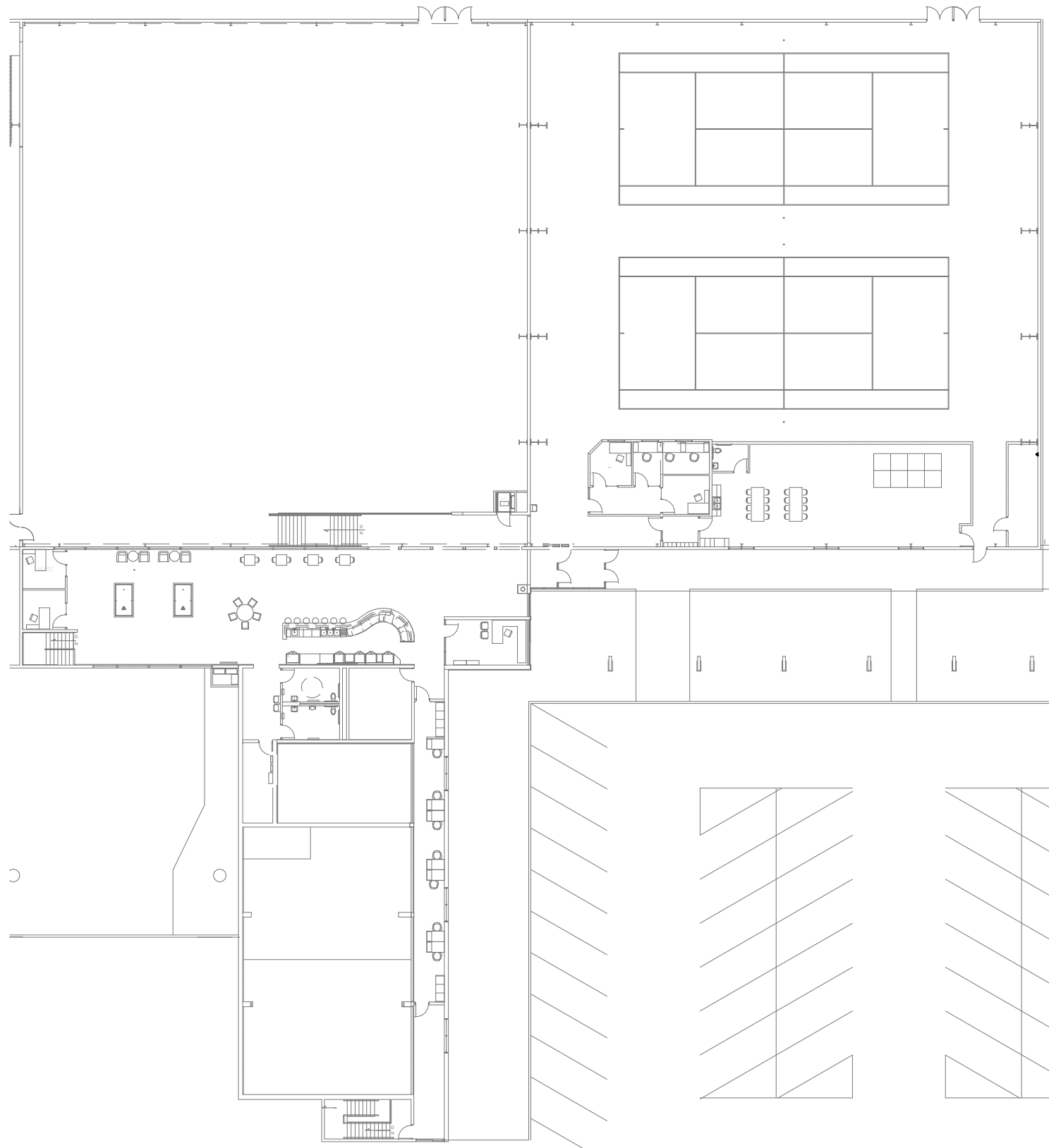
Remarks

Flow test location number: 1006101
Pressure gage point: 20-16

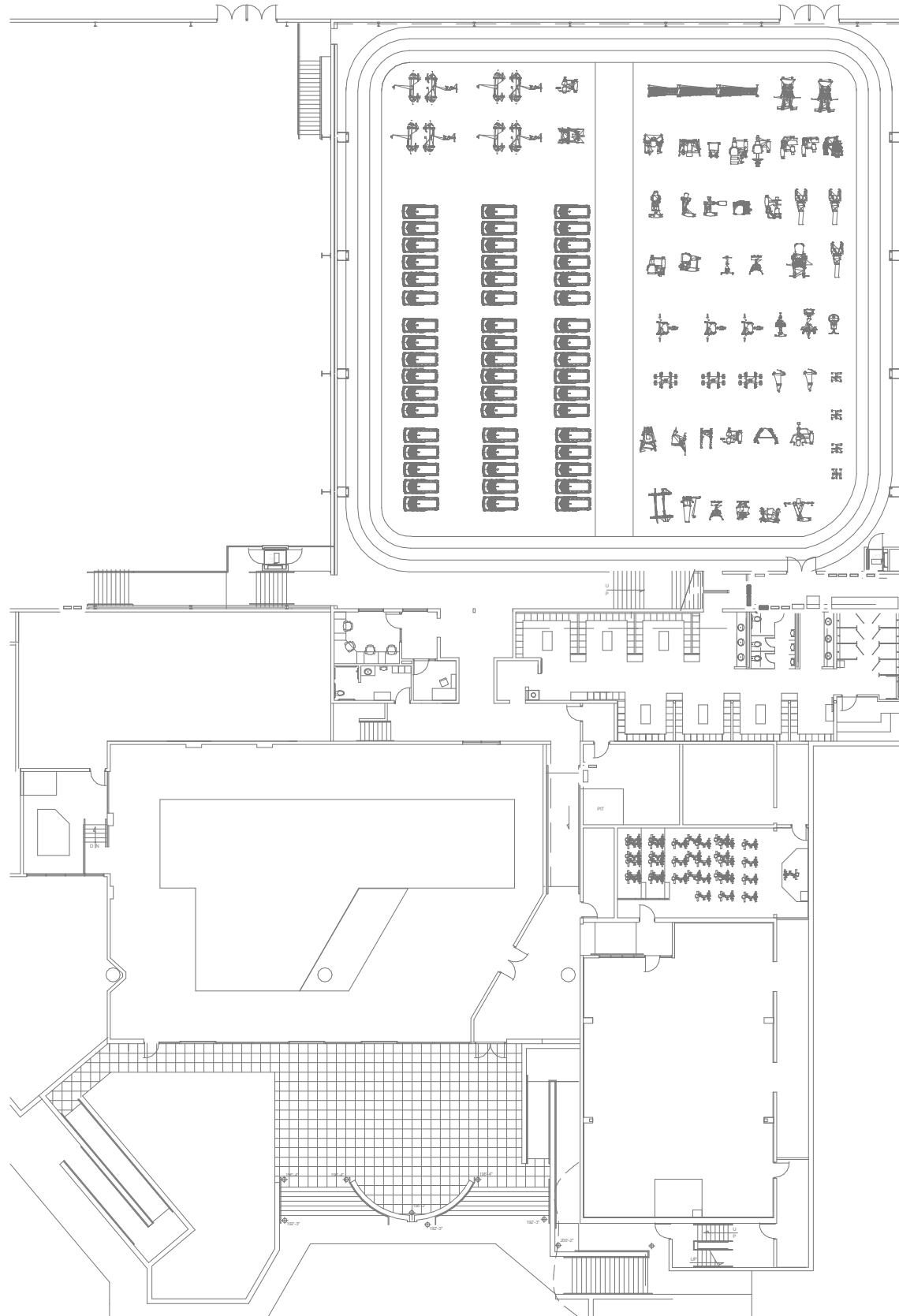


HANNEY & ASSOCIATES, ARCHITECTS
1726 South Hillside, Wichita, Kansas, 67211
Phone (316) 683-8965
Fax (316) 684-1441

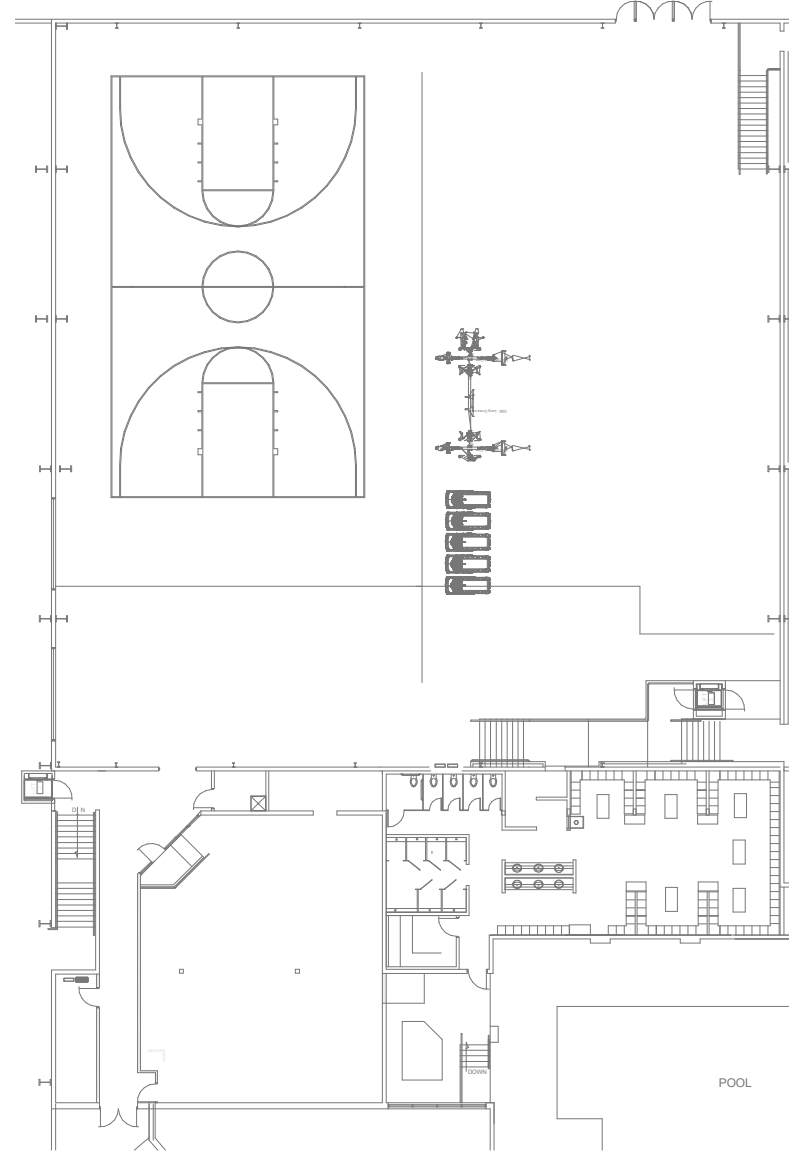
1 FLOW TEST RESULTS



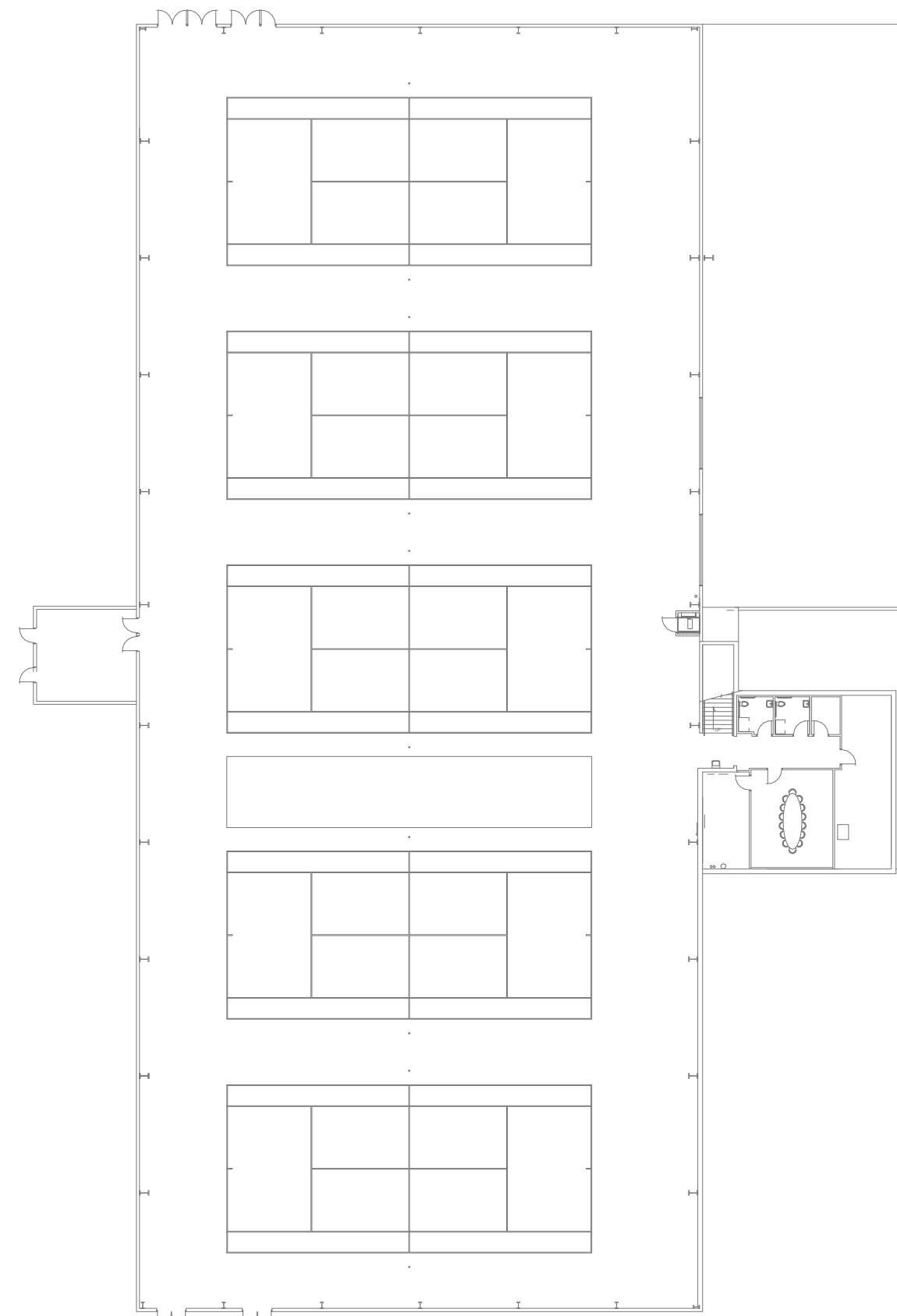
3 LEVEL 1 - FIRE PROTECTION



4 LEVEL 2 - FIRE PROTECTION



5 LEVEL 3 - FIRE PROTECTION



6 LEVEL 4 - FIRE PROTECTION

[illegible]

COMPUTER DRAWING

DATE: APRIL 2019	
DRAWN BY:	CHECKED BY:
Author	Checker

SHEET

FP1.2

OF SHEETS

2019 © COPYRIGHT

PERMISSION TO REPRODUCE ANY PART OF THIS DOCUMENT IS HEREBY GRANTED SOLELY FOR THE PURPOSE OF THE CONSTRUCTION OF THE PROJECT OR THE ARCHIVING OF THIS PROJECT. UNAUTHORIZED USE OF THIS DOCUMENT WITHOUT THE WRITTEN PERMISSION OF SPECIALIZED ENGINEERING SOLUTIONS IS PROHIBITED BY COPYRIGHT LAW.

DO NOT SCALE DRAWING. ALL DIMENSIONS AND CLEARANCES SHALL BE VERIFIED FROM APPROPRIATE SOURCES. ALL WORK SHALL BE COORDINATED PRIOR TO INSTALLATION. SEE SPECIFICATIONS.



SES PROJECT # 18435