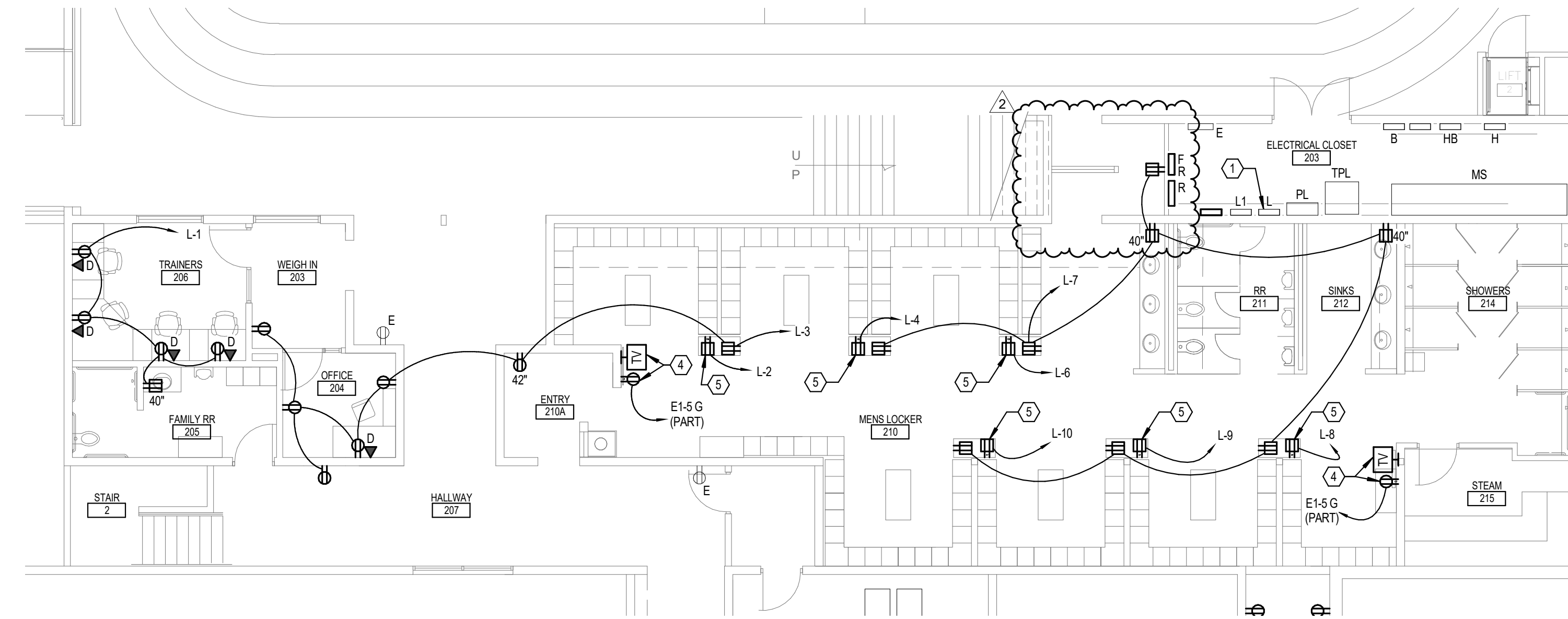
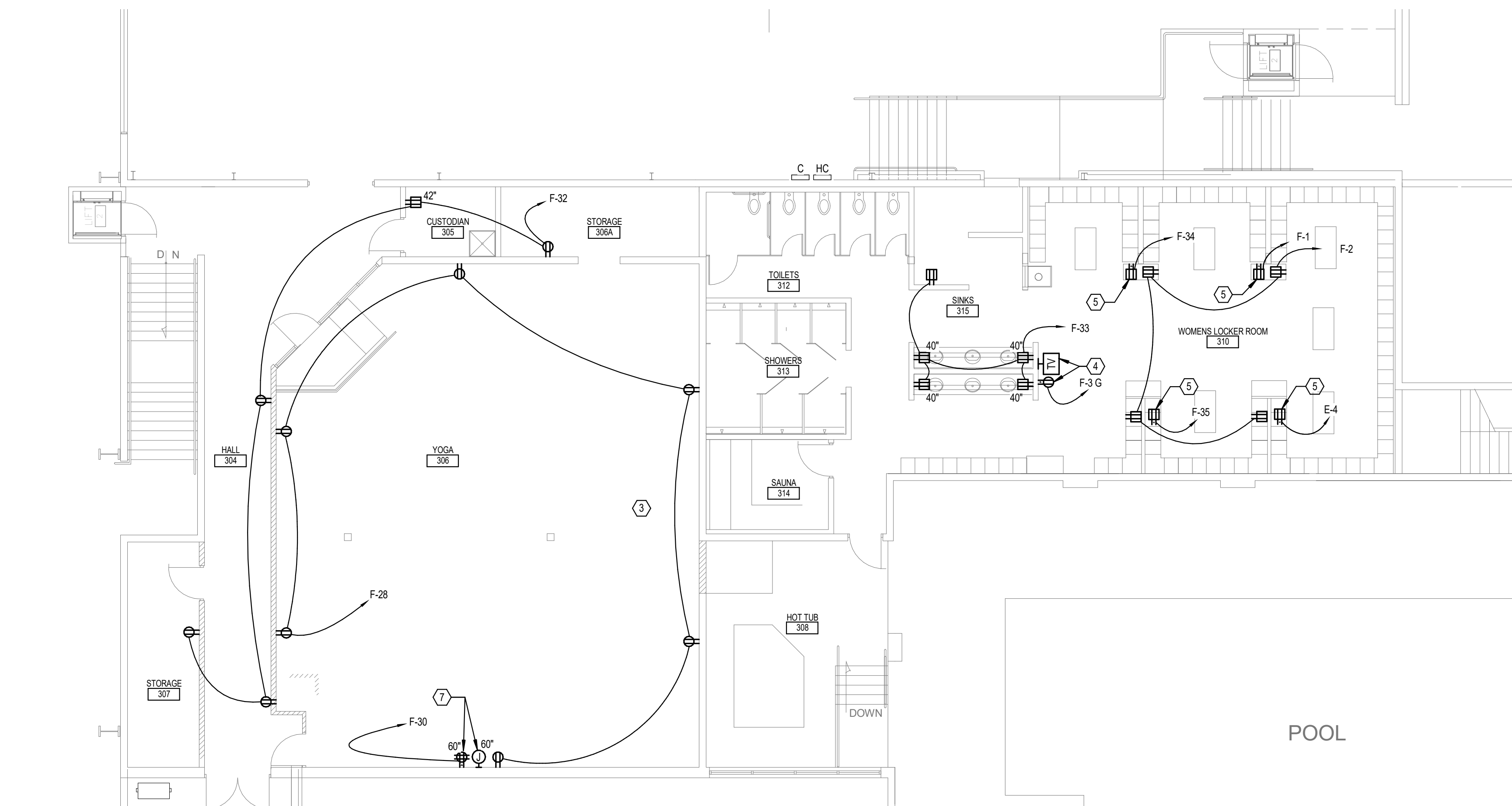


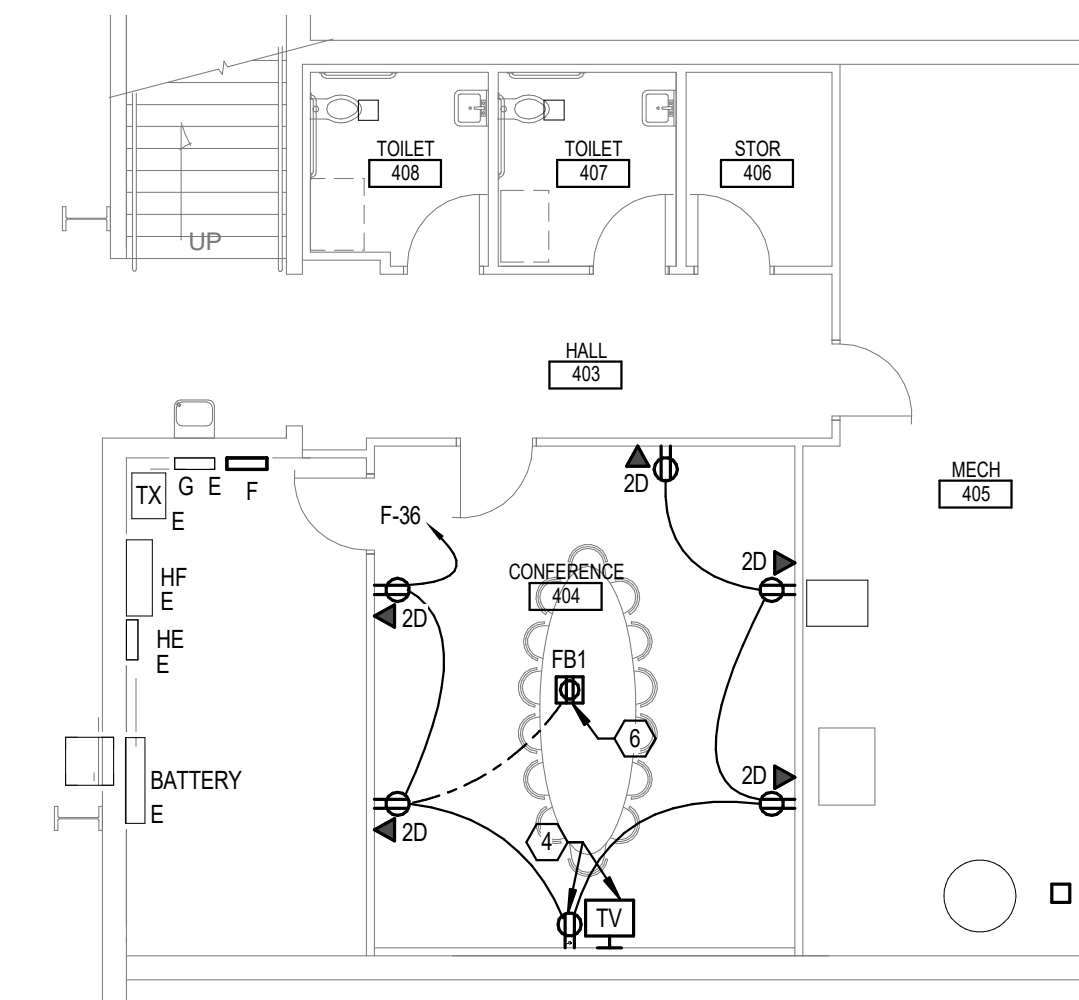
1 ENLARGED CHILD CARE - POWER & SYSTEMS
1/8" = 1'-0"



2 ENLARGED MEN'S LOCKER - POWER & SYSTEMS
1/8" = 1'-0"



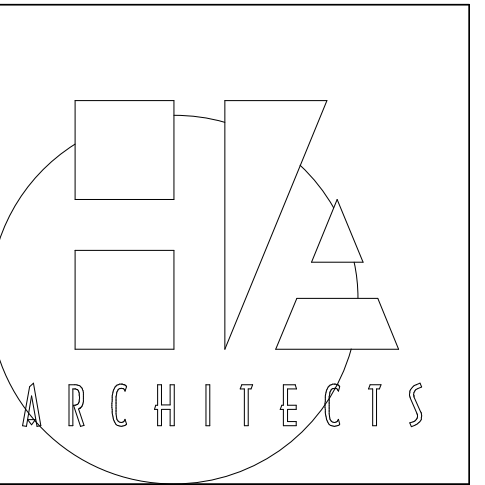
3 ENLARGED WOMEN'S LOCKER - POWER & SYSTEMS
1/8" = 1'-0"



4 ENLARGED CONFERENCE - POWER & SYSTEMS
1/8" = 1'-0"

SHEET NOTES:

- BRANCH CIRCUITS SERVED FROM THIS PANEL ARE FOR REFERENCE ONLY. CONTRACTOR SHALL FIELD VERIFY EXISTING SPARE CIRCUIT BREAKERS AND CIRCUIT BREAKERS MADE AVAILABLE DURING DEMOLITION. PROVIDE NEW 201 CIRCUIT BREAKERS AS NECESSARY TO ACCOMMODATE RENOVATIONS. EXISTING PANEL 'L' IS A 225A 208Y/120V FEDERAL PACIFIC PANEL UTILIZING FEDERAL PACIFIC TYPE NB CIRCUIT BREAKERS. (TYPICAL)
- BRANCH CIRCUITS SERVED FROM THIS PANEL ARE FOR REFERENCE ONLY. CONTRACTOR SHALL FIELD VERIFY EXISTING SPARE CIRCUIT BREAKERS AND CIRCUIT BREAKERS MADE AVAILABLE DURING DEMOLITION. PROVIDE NEW 201 CIRCUIT BREAKERS AS NECESSARY TO ACCOMMODATE RENOVATIONS. EXISTING PANEL 'PL1A' IS A 250A 208Y/120V SIEMENS PANEL WITH A KAIC RATING OF 10 KA. (TYPICAL)
- COORDINATE ALL WALL MOUNTED ELECTRICAL DEVICES IN THIS SPACE TO MINIMIZE INSTALLATION OF DEVICES ON OWNER PROVIDED FULL-HEIGHT MIRROR(S). COORDINATE EXACT LOCATIONS WITH OWNER PRIOR TO ROUGH-IN.
- COORDINATE EXACT MOUNTING REQUIREMENTS AND LOCATIONS OF ALL TELEVISION AND MONITOR LOCATIONS WITH OWNER PRIOR TO ROUGH-IN.
- JUNCTION BOX INDICATED SHALL BE USED FOR CONNECTION TO OWNER PROVIDED HAND/HAIR DRYER. COORDINATE EXACT POWER CONNECTION, MOUNTING REQUIREMENTS, AND LOCATION WITH OWNER PRIOR TO INSTALLATION.
- COORDINATE SAWCUTTING OF FLOOR WITH ARCHITECT PRIOR TO ROUGH-IN.
- DEVICES INDICATED SHALL BE FOR OWNER'S LOCAL SOUND SYSTEM. PROVIDE ONE (1) 4" BACK BOX WITH ONE (1) 1-1/4" CONDUIT WITH SIX INCHES OF DOUBLE DUPLEX RECEPTACLE SHOWN ON PLANS. LOW VOLTAGE CONDUIT SHALL BE ROUTED TO ABOVE ACCESSIBLE CEILING AND PROVIDED WITH PULL CORD. COORDINATE EXACT LOCATION OF DOUBLE DUPLEX AND LOW VOLTAGE JUNCTION BOX WITH OWNER PRIOR TO ROUGH-IN.



HANNAY & ASSOCIATES, ARCHITECTS
1726 South Hillside, Wichita, Kansas, 67211
Phone: (316) 853-8955
Fax: (316) 684-1441

2019 GENESIS HEALTH WESTROADS
 1212 NORTH 162ND STREET
 OMAHA, NE 68114



DRAWINGS ISSUED		
NO.	DATE	ITEM ISSUED
2	10/04/19	ADDENDUM #2
1	04/22/19	ISSUED FOR BID
COMPUTER DRAWING		
DATE: APRIL 2019		
DRAWN BY: EJR/NLE		CHECKED BY: TJH
SHEET		

INSTALL GREEN INSULATED GROUND WIRE WITH LIGHTING, RECEPTACLE AND EQUIPMENT BRANCH CIRCUITS.

INSTALL INDIVIDUAL (DEDICATED) NEUTRAL CONDUCTORS FOR EACH 120V OR 277V PHASE CONDUCTOR SERVED FROM A SINGLE POLE CIRCUIT BREAKER

2019 © COPYRIGHT
PERMISSION TO REPRODUCE ANY PART OF THIS DOCUMENT IS HEREBY GRANTED SOLELY FOR THE PURPOSE OF THE CONSTRUCTION OF THE PROJECT OR THE ARCHIVING OF THIS PROJECT. UNAUTHORIZED USE OF THIS DOCUMENT WITHOUT THE WRITTEN PERMISSION OF SPECIALIZED ENGINEERING SOLUTIONS IS PROHIBITED BY COPYRIGHT LAW.

DO NOT SCALE DRAWING. ALL DIMENSIONS AND CLEARANCES SHALL BE VERIFIED FROM APPROPRIATE SOURCES. ALL WORK SHALL BE COORDINATED PRIOR TO INSTALLATION. SEE SPECIFICATIONS.

SPECIALIZED ENGINEERING SOLUTIONS
10360 Ellison Circle
Omaha, NE 68134
Phone: 402.991.5520
SES PROJECT # 18435
www.specializedeng.com

E3.4

OF SHEETS

BIM 360//18435 - Genesis Health Club Westroads/18435_Genesis_Westroads_SES_2017.rvt
 10/6/2019 5:17:25 PM