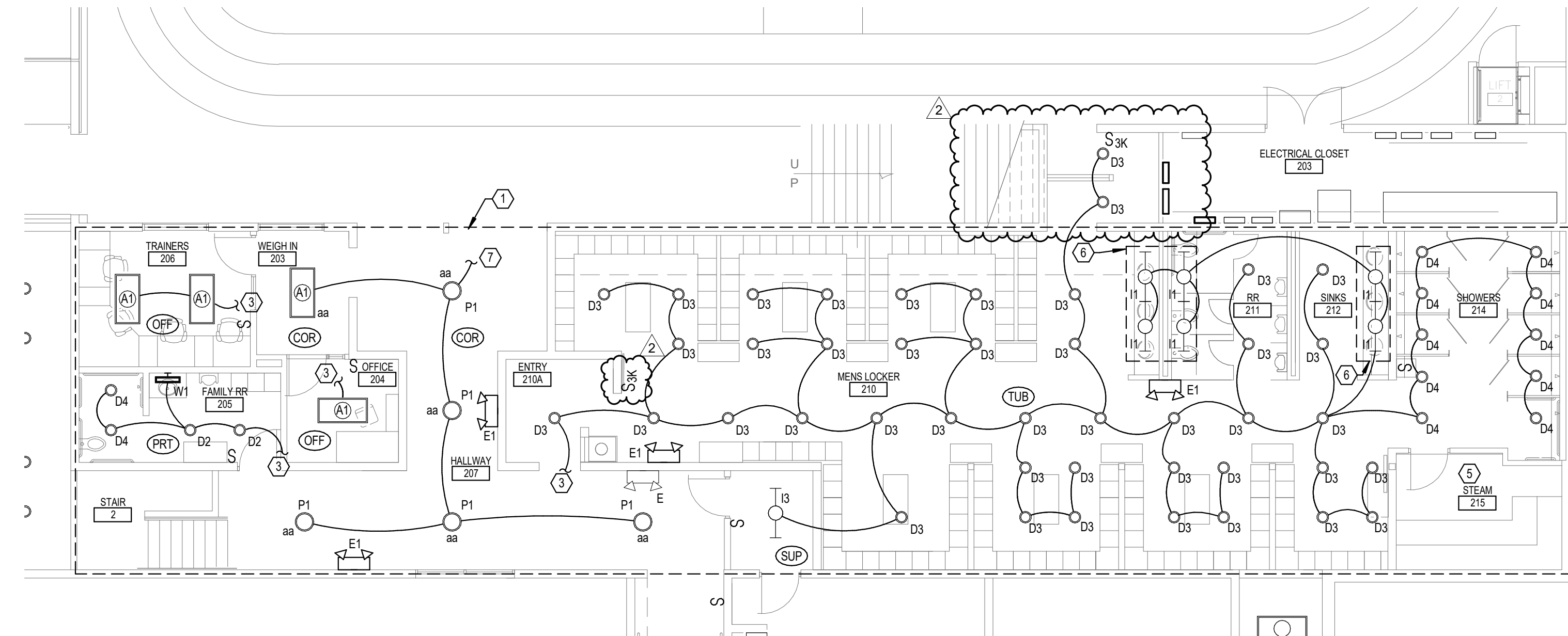
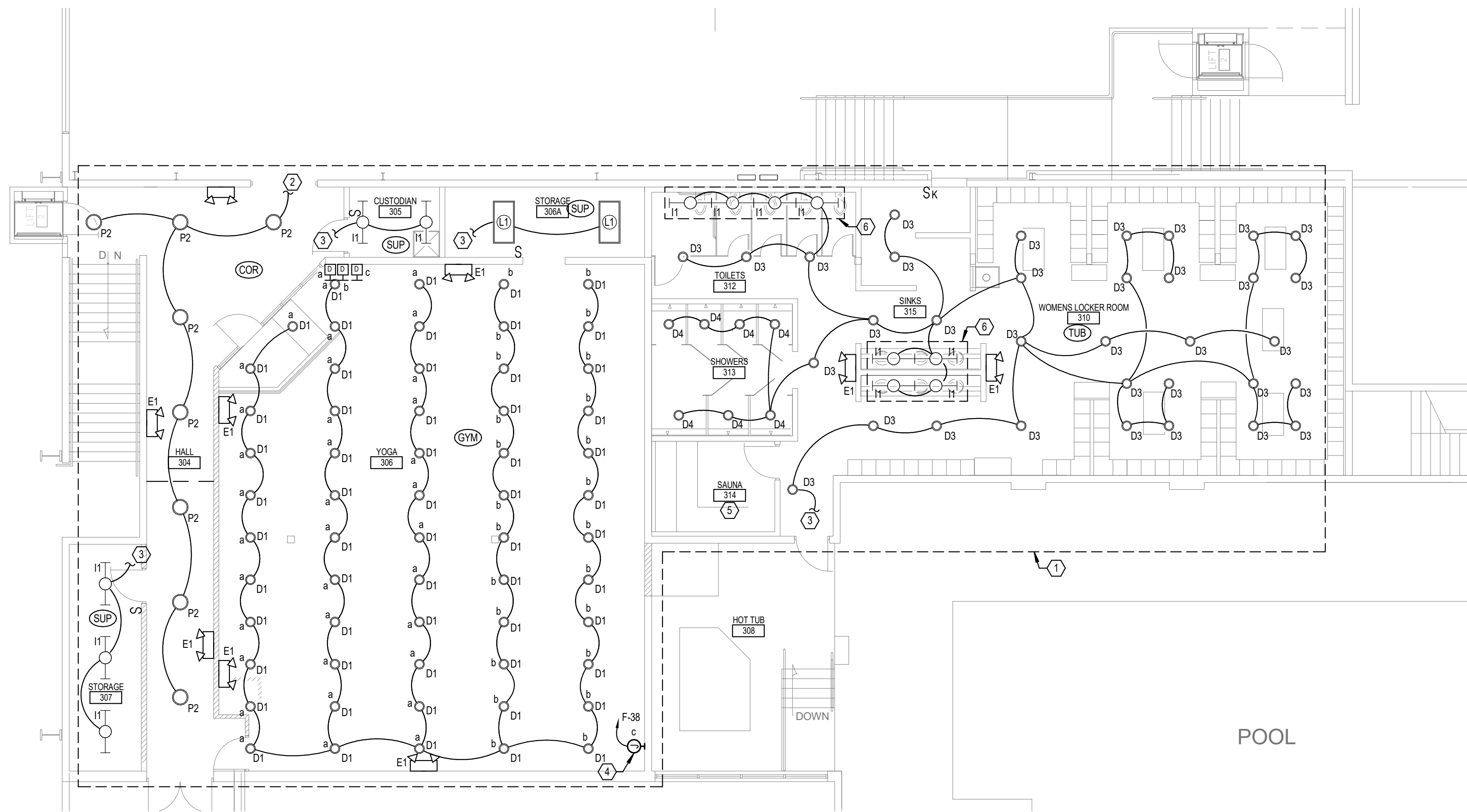


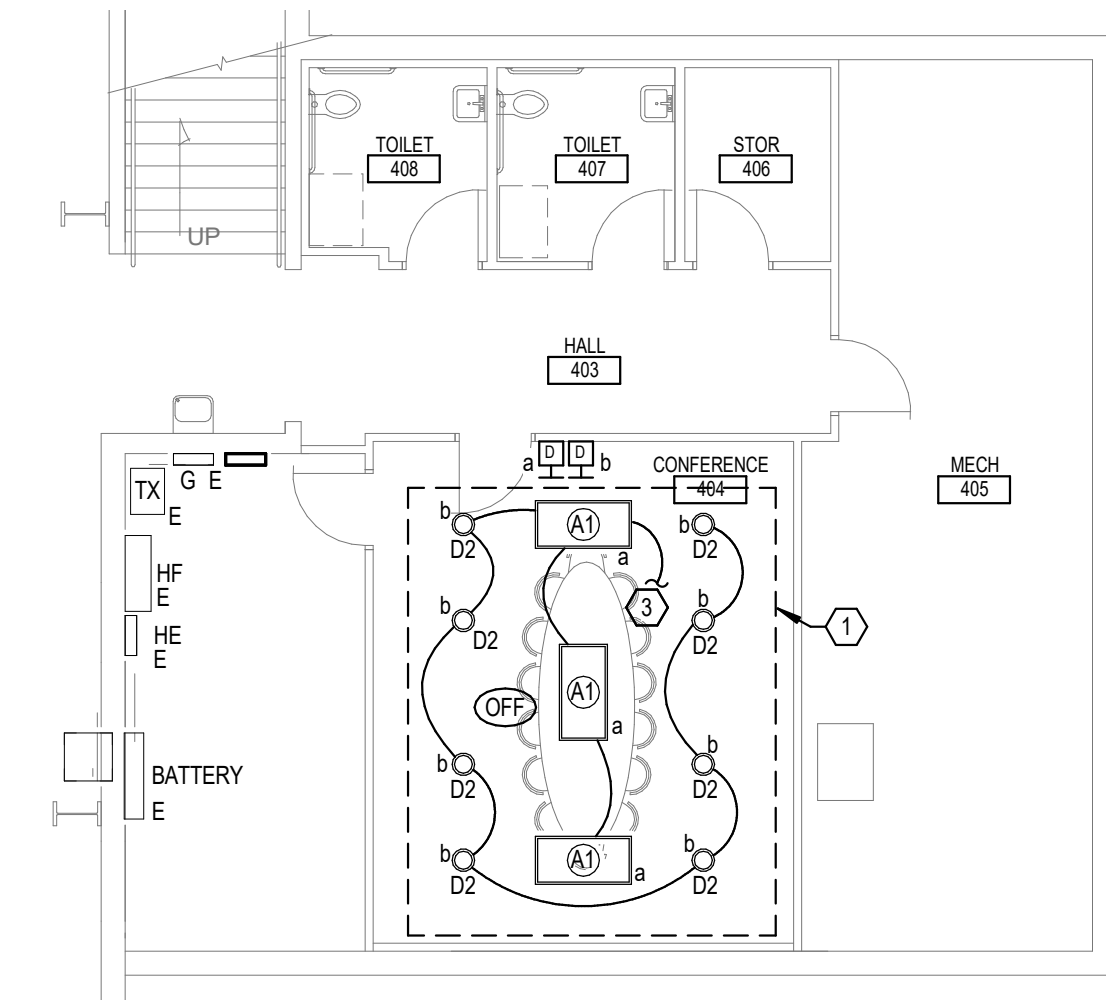
**1 ENLARGED CHILD CARE - LIGHTING**  
1/8" = 1'-0"



**2 ENLARGED MEN'S LOCKER - LIGHTING**  
1/8" = 1'-0"



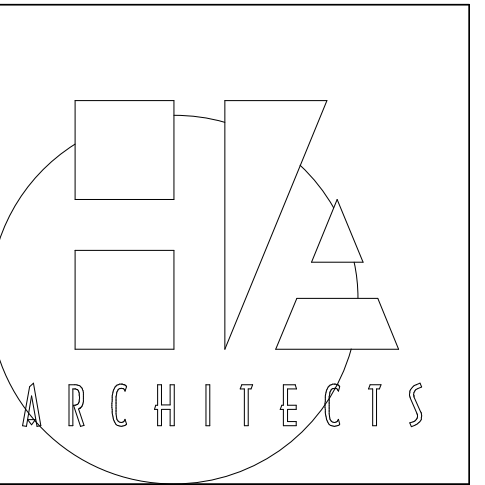
**3 ENLARGED WOMEN'S LOCKER - LIGHTING**  
1/8" = 1'-0"



**4 ENLARGED CONFERENCE - LIGHTING**  
1/8" = 1'-0"

**SHEET NOTES:**

1. LIGHT FIXTURES INDICATED ON PLAN AND IN SCHEDULE ARE FOR BASIS OF DESIGN ONLY. OWNER SHALL FURNISH ALL LIGHT FIXTURES TO CONTRACTOR. CONTRACTOR SHALL COORDINATE WITH OWNER ANY VARIATIONS FROM CIRCUITING SHOWN ON PLAN OR ENERGY CODE COMPLIANCE ISSUES THAT SHALL ARISE DUE TO OWNER FURNISHED LIGHT FIXTURES. CONTRACTOR SHALL VERIFY WITH OWNER EXACT LIGHT FIXTURE QUANTITIES, LOCATIONS, CONTROLS, AND LAYOUT PRIOR TO INSTALLATION.
2. SERVE NEW LIGHT FIXTURES FROM EXISTING LIGHTING BRANCH CIRCUIT PREVIOUSLY SERVING CORRIDOR LIGHTING. CONTROL OF NEW LIGHT FIXTURES SHALL BE THROUGH USE OF PREVIOUS CORRIDOR LIGHTING MADE AVAILABLE DURING DEMOLITION. COORDINATE CONTROL OF LIGHT FIXTURES WITH OWNER PRIOR TO ROUGH-IN.
3. SERVE NEW LIGHT FIXTURES FROM EXISTING LIGHTING BRANCH CIRCUIT PREVIOUSLY SERVING AREAS MADE AVAILABLE DURING DEMOLITION. LIGHT FIXTURES SHALL BE CONTROLLED BY LIGHTING CONTROL DEVICE(S) IN SPACE. COORDINATE LOCATION OF LIGHTING CONTROL DEVICE(S) WITH OWNER PRIOR TO ROUGH-IN.
4. PROVIDE ONE (1) 4" SQUARE BACK BOX WITH ONE (1) 3/4" CONDUIT RECESSED IN WALL AND CONDUIT ROUTED ABOVE ACCESSIBLE CEILING SERVE FROM BRANCH CIRCUIT INDICATED ON FLOOR PLANS. JUNCTION BOX SHALL BE FOR OWNER'S PROVIDED LIGHTED BALLET BAR. COORDINATE EXACT LOCATION OF JUNCTION BOX WITH OWNER AND BALLET BAR MANUFACTURER'S INSTALLATION REQUIREMENTS PRIOR TO ROUGH-IN. JUNCTION BOX SHALL BE INSTALLED IN SUCH A MANNER TO MINIMIZE DISTURBANCE TO FULL HEIGHT MIRRORS.
5. LIGHT FIXTURES AND CONTROLS FOR LIGHT FIXTURES IN SAUNA/STEAM ROOM SHALL BE PROVIDED BY OWNER. COORDINATE POWER REQUIREMENTS FOR LIGHT FIXTURES WITH OWNER PRIOR TO ROUGH-IN.
6. LIGHT FIXTURES INDICATED SHALL BE MOUNTED IN ARCHITECTURAL RECESSED POCKET. COORDINATE EXACT INSTALLATION OF REQUIREMENTS WITH ARCHITECTURAL DETAILS.
7. REFER TO VIEW 1 ON SHEET E3.1 FOR ADDITIONAL INFORMATION ON CONTROL OF LIGHT FIXTURES INDICATED.



HANNEY & ASSOCIATES, ARCHITECTS  
1726 South Hillside, Wichita, Kansas, 67211  
Phone (316) 863-8965  
Fax (316) 684-1441

**2019 GENESIS HEALTH WESTROADS**  
 1212 NORTH 162ND STREET  
 OMAHA, NE 68114



DRAWINGS ISSUED		
NO.	DATE	ITEM ISSUED
2	10/04/19	ADDENDUM #2
1	04/22/19	ISSUED FOR BID

COMPUTER DRAWING

DATE: APRIL 2019  
DRAWN BY: EJR/NLE  
CHECKED BY: TJH

SHEET

**E3.2**

OF SHEETS

2019 © COPYRIGHT  
PERMISSION TO REPRODUCE ANY PART OF THIS DOCUMENT IS HEREBY GRANTED SOLELY FOR THE PURPOSE OF THE CONSTRUCTION OF THE PROJECT OR THE ARCHIVING OF THIS PROJECT. UNAUTHORIZED USE OF THIS DOCUMENT WITHOUT THE WRITTEN PERMISSION OF SPECIALIZED ENGINEERING SOLUTIONS IS PROHIBITED BY COPYRIGHT LAW.  
DO NOT SCALE DRAWING. ALL DIMENSIONS AND CLEARANCES SHALL BE VERIFIED FROM APPROPRIATE SOURCES. ALL WORK SHALL BE COORDINATED PRIOR TO INSTALLATION. SEE SPECIFICATIONS.

**SPECIALIZED ENGINEERING SOLUTIONS**  
10360 Ellison Circle  
Omaha, NE 68134  
Phone: 402.991.5520  
SES PROJECT # 18435

www.specializedeng.com

BIM 360//18435 - Genesis Health Club Westroads/18435\_Genesis\_Westroads\_SES\_2017.rvt  
 10/6/2019 5:17:13 PM