

10/02/19  
**HANNEY & ASSOCIATES, ARCHITECTS**  
 1726 South Hillside, Wichita, Kansas, 67211  
 Phone: (316) 683-8965  
 Fax: (316) 684-1441

**2019 GENESIS HEALTH CLUBS WESTROADS**  
 1212 NORTH 102ND STREET  
 OMAHA, NE 68114

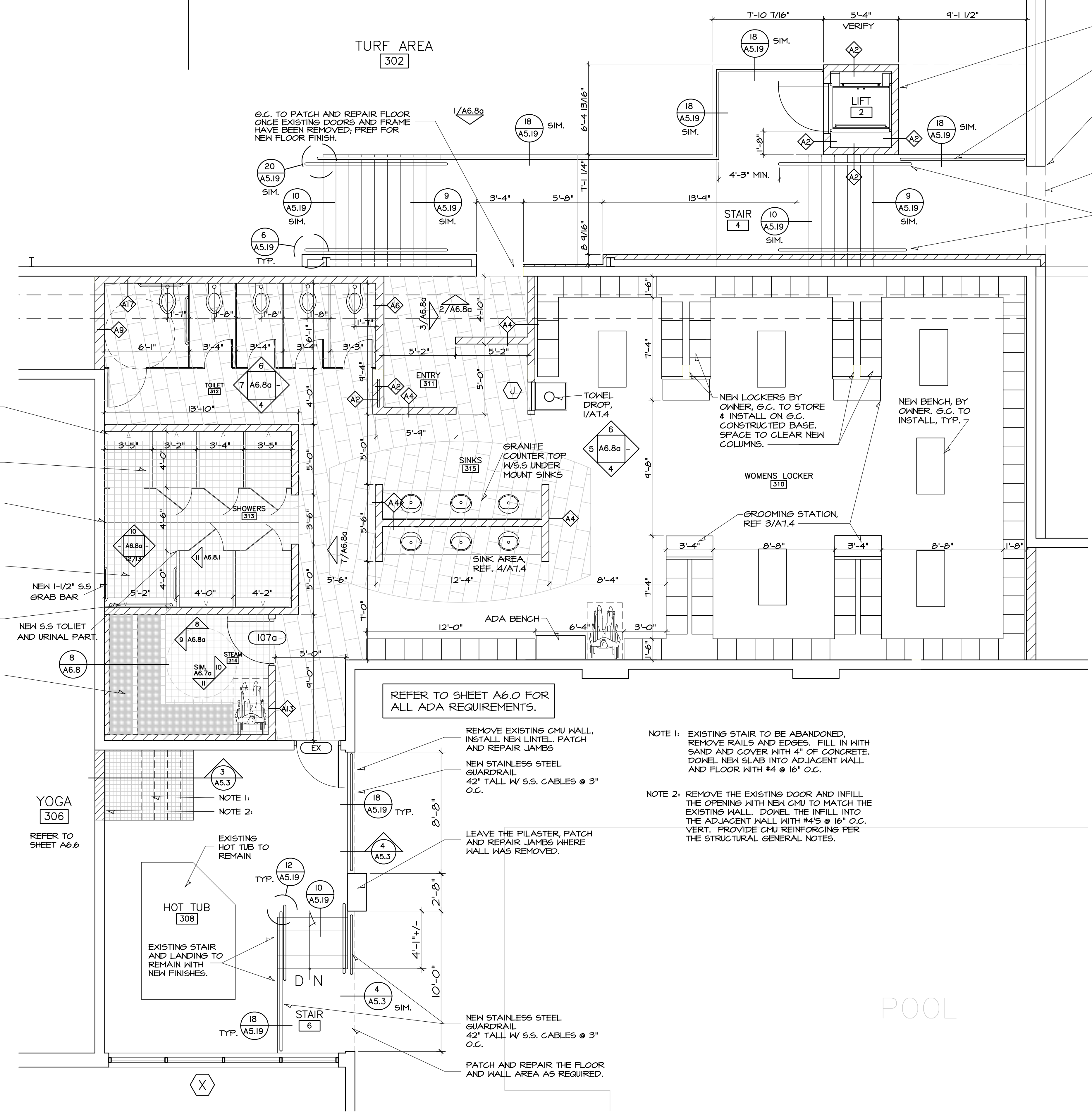


DRAWINGS ISSUED			
NO.	DATE	ITEM	ISSUED
20	10/02/19	ADDENDUM 2	
19	09/09/19	BID SET	
18	09/03/19	CODE REVIEW	
17	08/26/19	CODE REVIEW	
16	08/11/19	CODE REVISIONS	
15	06/17/19	CODE REVISIONS	
14	04/22/19	PLAN REVIEW	
13	02/18/19	REVIEW	
12	01/29/19	REVIEW	
11	01/08/19	REVISIONS	
10	12/19/18	REVIEW	
9	11/27/18	REVIEW	

COMPUTER DRAWING  
 GOE\_A608.dwg

DATE: APRIL 2019  
 DRAWN BY: CHECKED BY:  
 MH, CH, JC, MB MRH

SHEET  
**A6.8**  
 OF SHEETS



TRENCH DRAIN ALONG THE THE SHOWER WALL. TILE FINISH ALL SURFACES. SLOPE BOTTOM OF TRENCH TO DRAINS. TYPICAL BOTH SIDES OF SHOWERS

BLACK GRANITE SHOWER STALL WALLS AND GLASS SHOWER DOORS.

INDICATES RIDGE LINE IN SHOWER FLOOR. SLOPE FLOOR FROM RIDGE TO OPEN TRENCH DRAINS. REMOVE EXISTING FLOOR SLAB IN ALL SHOWERS TO ALLOW FOR DRAINAGE.

ROLL-IN ACCESSIBLE SHOWER STALL. INSTALL 1-1/2" O.D., S.S. GRAB BARS ON 3-WALL; ADA NO SEAT DESIGN, REF 1/A6.7

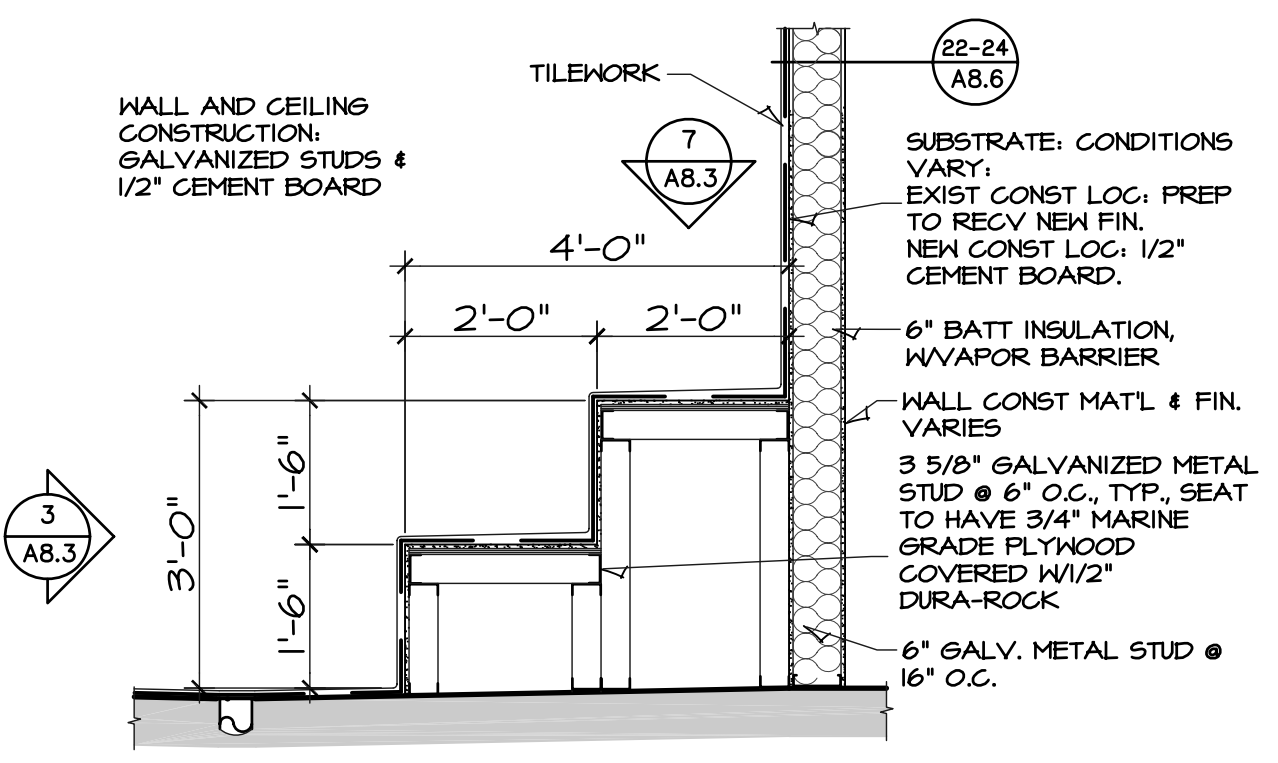
TRIANGLE INDICATES SHOWER HEAD.

STEAM ROOM BENCH. TILE FINISH ON ALL SURFACES, INCLUDING END AT WHEELCHAIR LOCATIONS

REFER TO SHEET A6.0 FOR ALL ADA REQUIREMENTS.

NOTE 1: EXISTING STAIR TO BE ABANDONED. REMOVE RAILS AND EDGES. FILL IN WITH SAND AND COVER WITH 4" OF CONCRETE. DOWEL NEW SLAB INTO ADJACENT WALL AND FLOOR WITH #4 @ 16" O.C.

NOTE 2: REMOVE THE EXISTING DOOR AND INFILL THE OPENING WITH NEW CMU TO MATCH THE EXISTING WALL. DOWEL THE INFILL INTO THE ADJACENT WALL WITH #4 @ 16" O.C. VERT. PROVIDE CMU REINFORCING PER THE STRUCTURAL GENERAL NOTES.



**8** STEAM ROOM BENCH DETAIL  
 SCALE: 1/2" = 1'-0"

WOMANS LOCKER ROOM 310  
**A** ENLARGED FLOOR PLAN  
 SCALE: 1/4" = 1'-0"  
 NORTH

