

10/01/19  
**HANNEY & ASSOCIATES, ARCHITECTS**  
 1726 South Hillside, Wichita, Kansas, 67211  
 Phone (316) 683-8965  
 Fax (316) 684-1441

**2019**  
**GENESIS HEALTH CLUBS**  
**WESTROADS**  
 1212 NORTH 102ND STREET  
 OMAHA, NE 68114

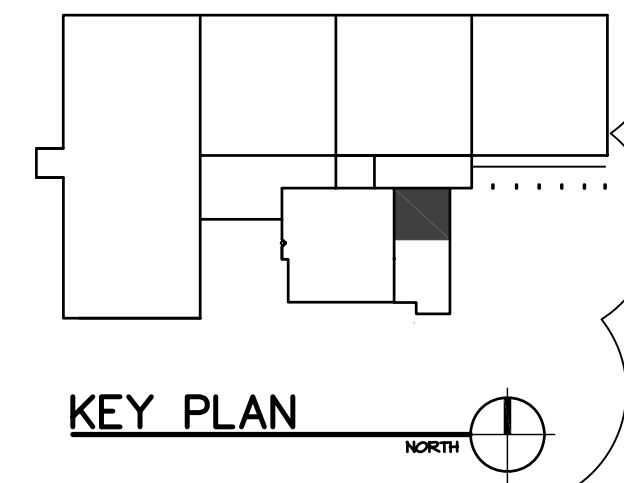
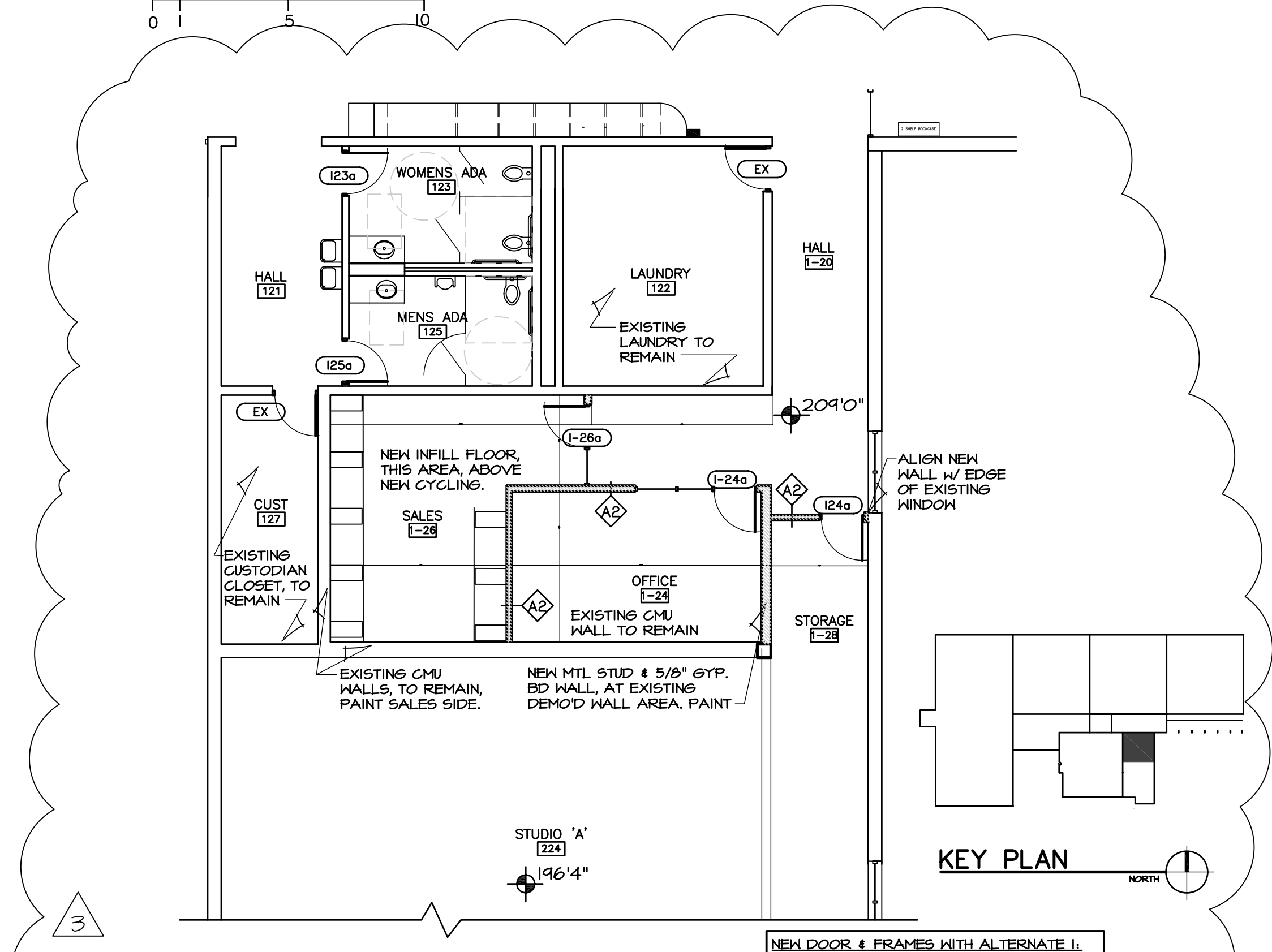
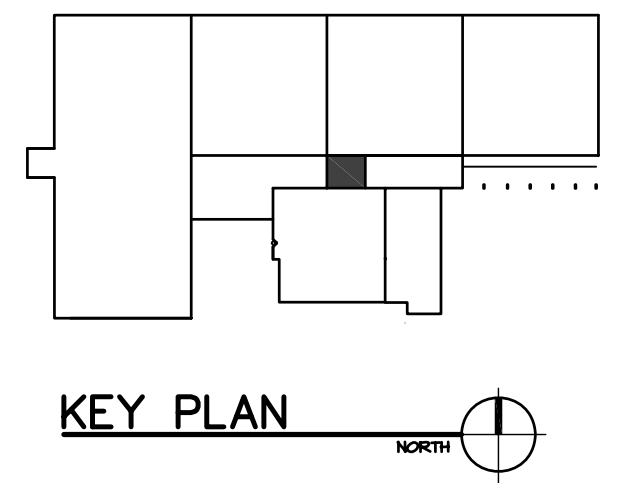
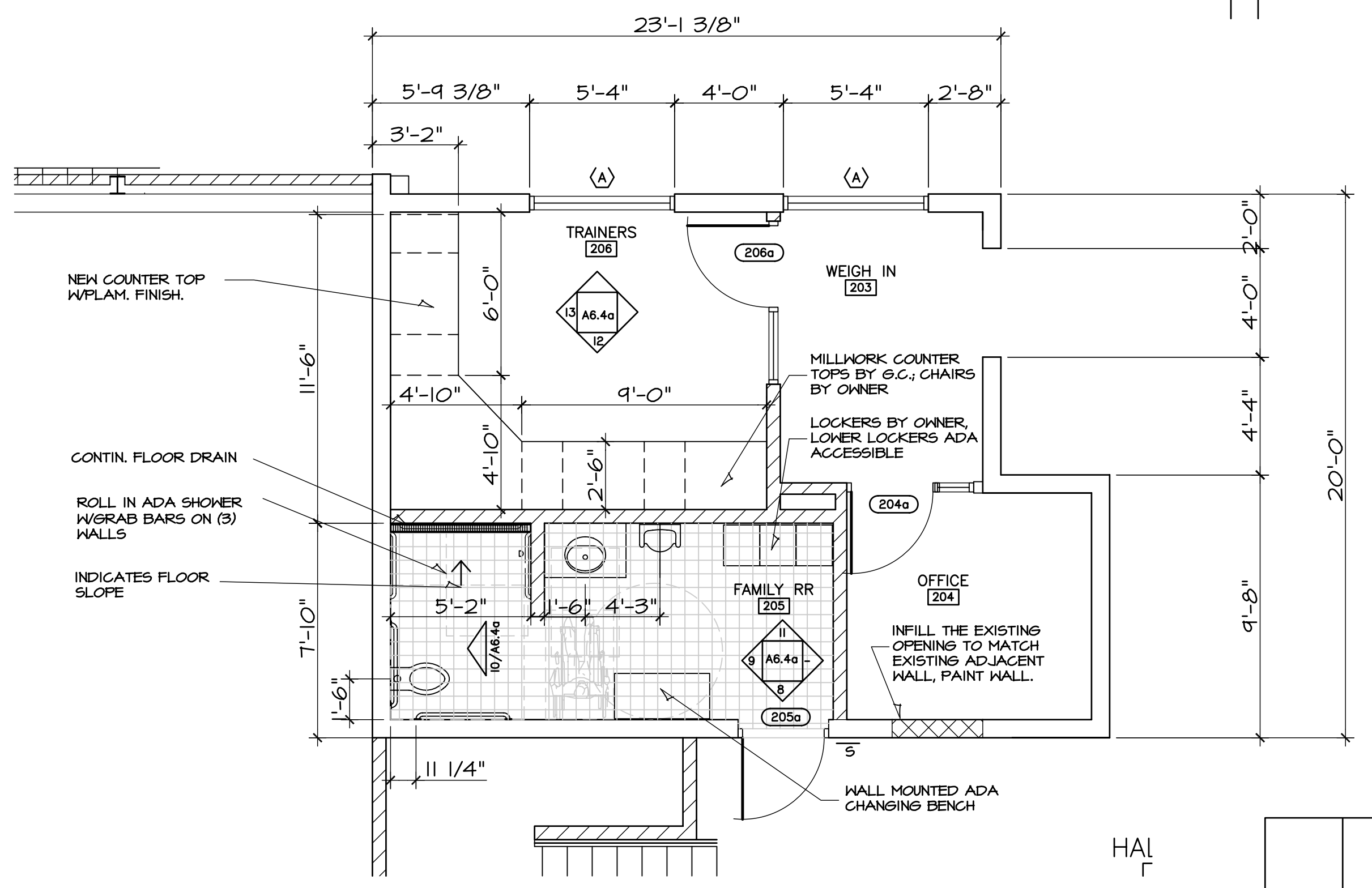
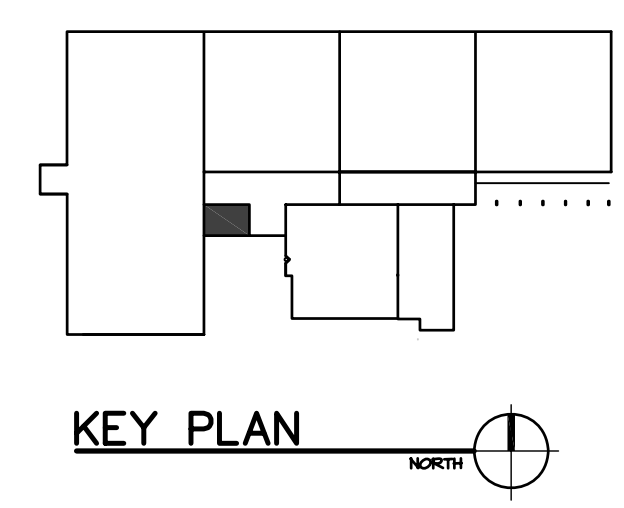
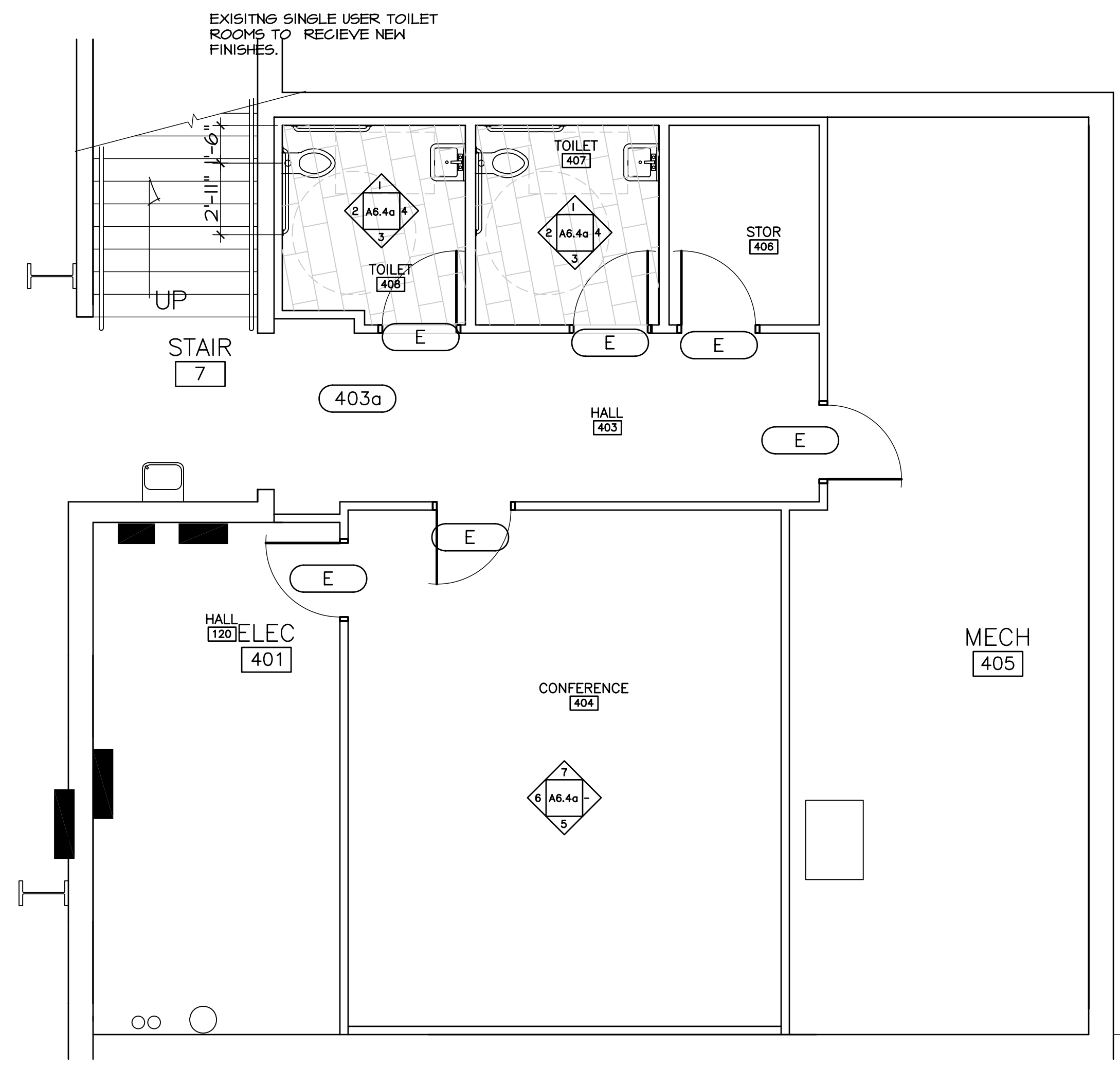


DRAWINGS ISSUED			
NO.	DATE	ITEM	ISSUED
20	10/10/19	ADDENDUM # 3	
19	04/04/19	BID SET	
18	04/03/19	CODE REVIEW	
17	08/26/19	CODE REVIEW	
16	08/11/19	CODE REVISIONS	
15	06/17/19	CODE REVISIONS	
14	04/22/19	PLAN REVIEW	
13	02/18/19	REVIEW	
12	01/29/19	REVIEW	
11	01/08/19	REVISIONS	
10	12/19/18	REVIEW	
9	11/27/18	REVIEW	

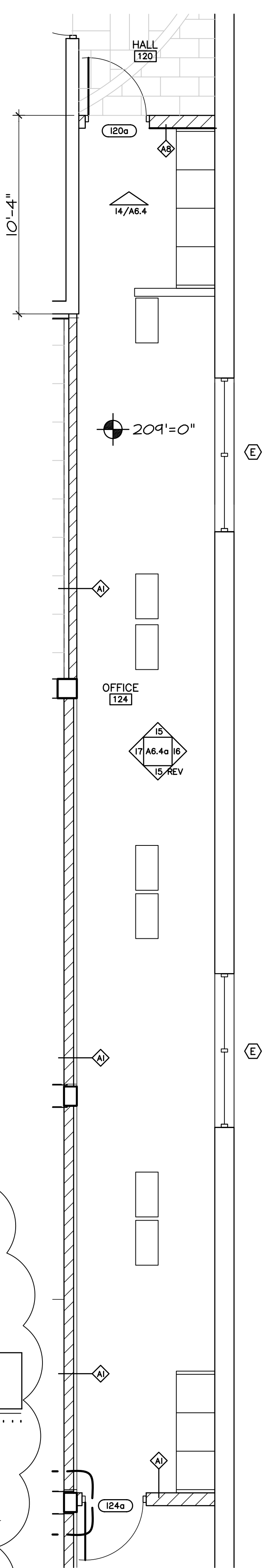
COMPUTER DRAWING  
 60E\_A604.dwg

DATE: APRIL 2019  
 DRAWN BY: CHECKED BY:  
 MH, CH, JC, MB MRH

SHEET  
**A6.4**  
 OF SHEETS



NEW DOOR & FRAMES WITH ALTERNATE I.  
 I-24a FRAME 5F, DOOR M1, HARDWARE 6  
 I-26a FRAME 4F, DOOR M1, HARDWARE 6



OFFICE  
**C ENLARGED PLAN**  
 SCALE: 1/4" = 1'-0"