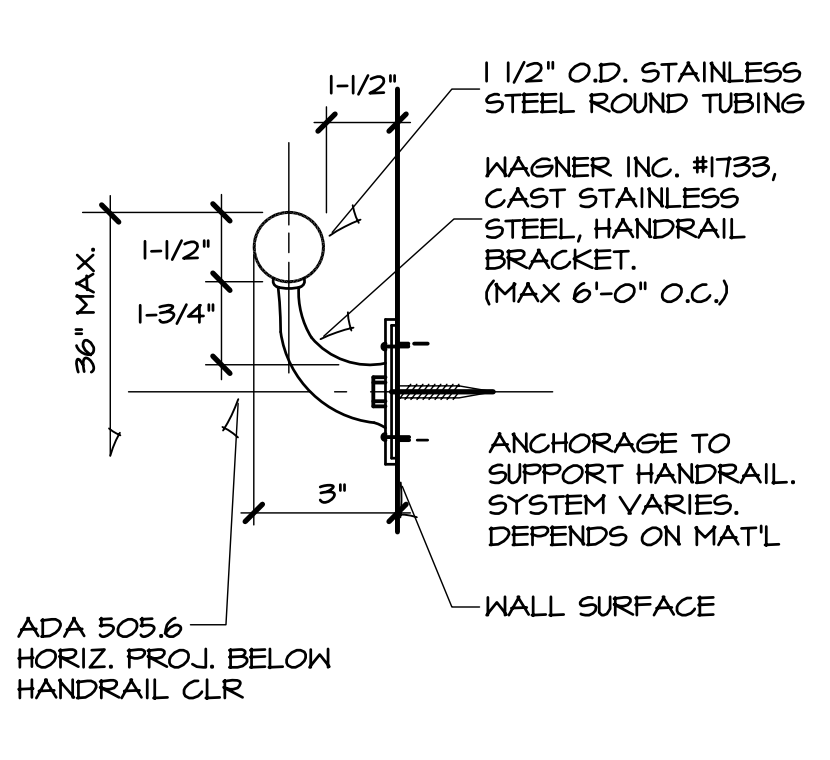
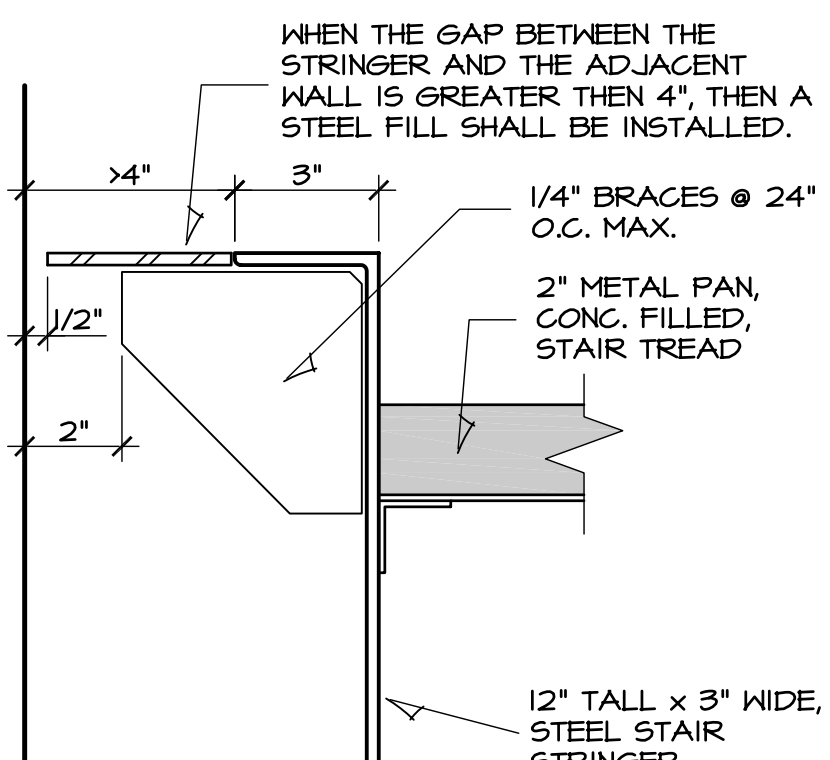


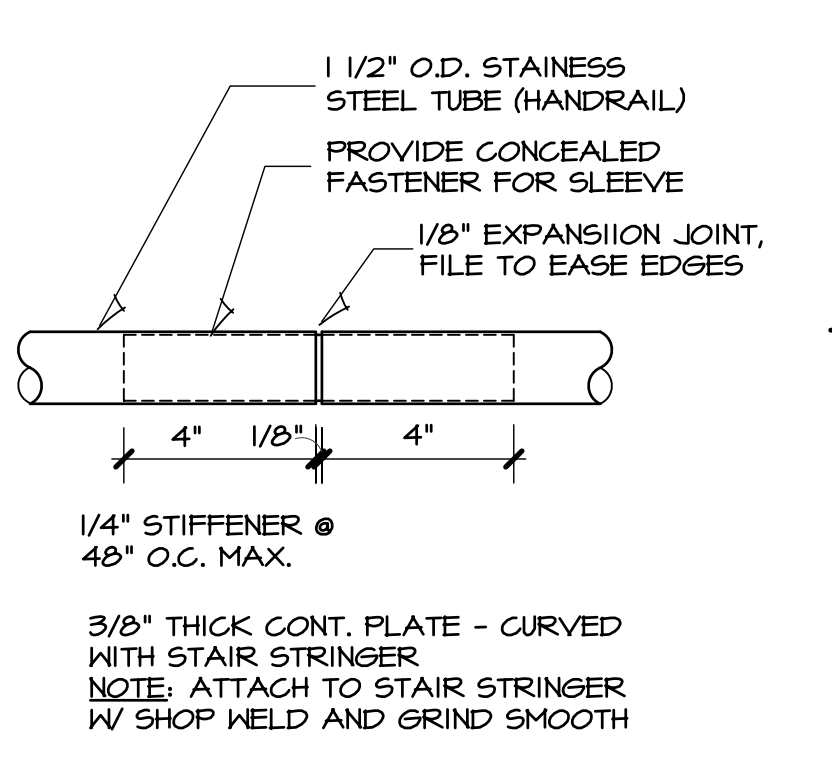
1 HANDRAIL
SCALE: 3" = 1'-0"



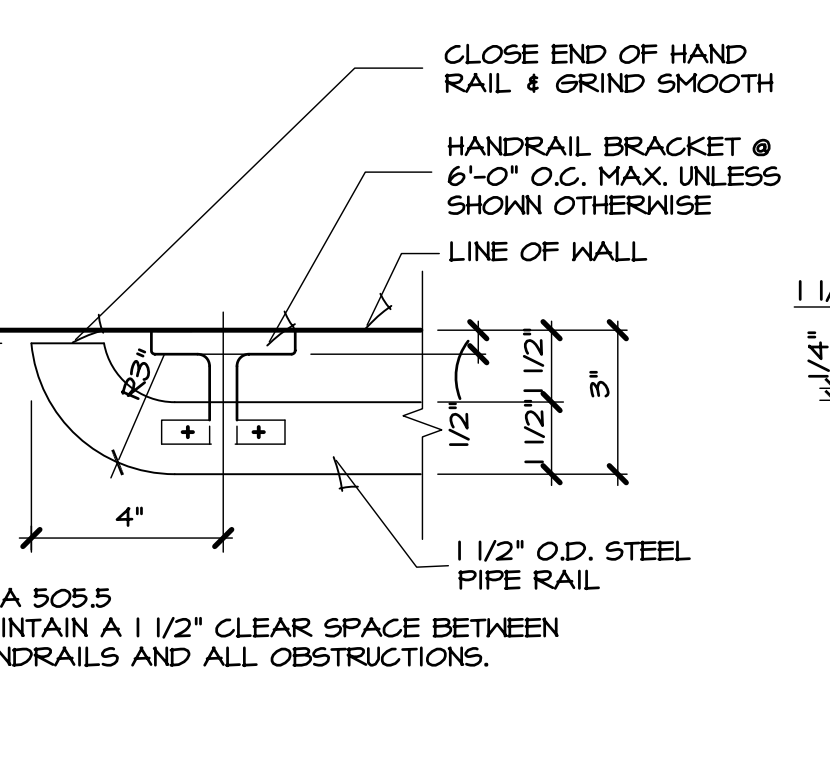
2 HANDRAIL
SCALE: 3" = 1'-0"



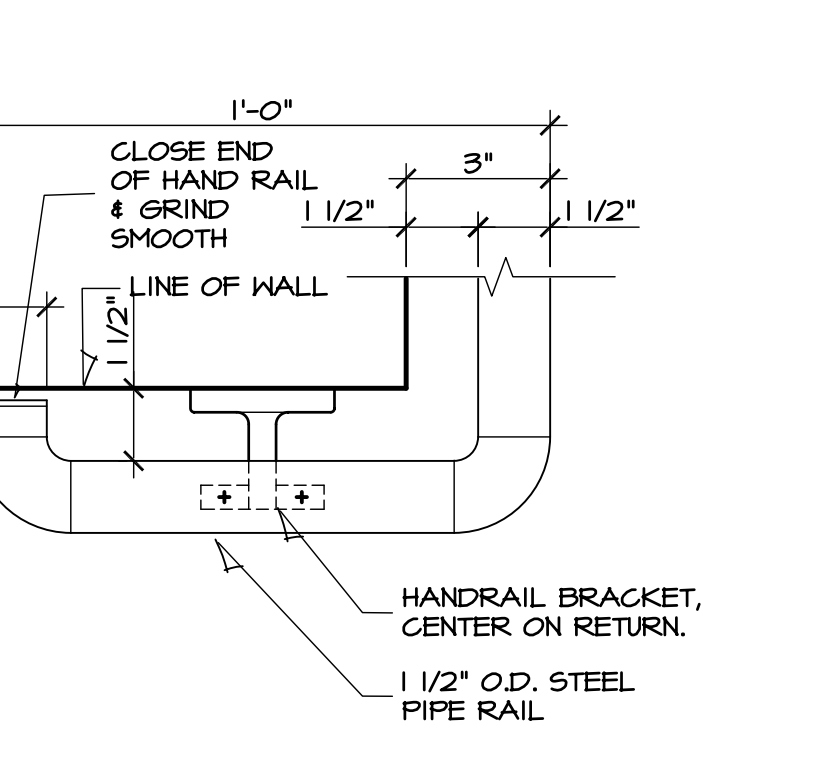
3 CLOSURE
SCALE: 3" = 1'-0"



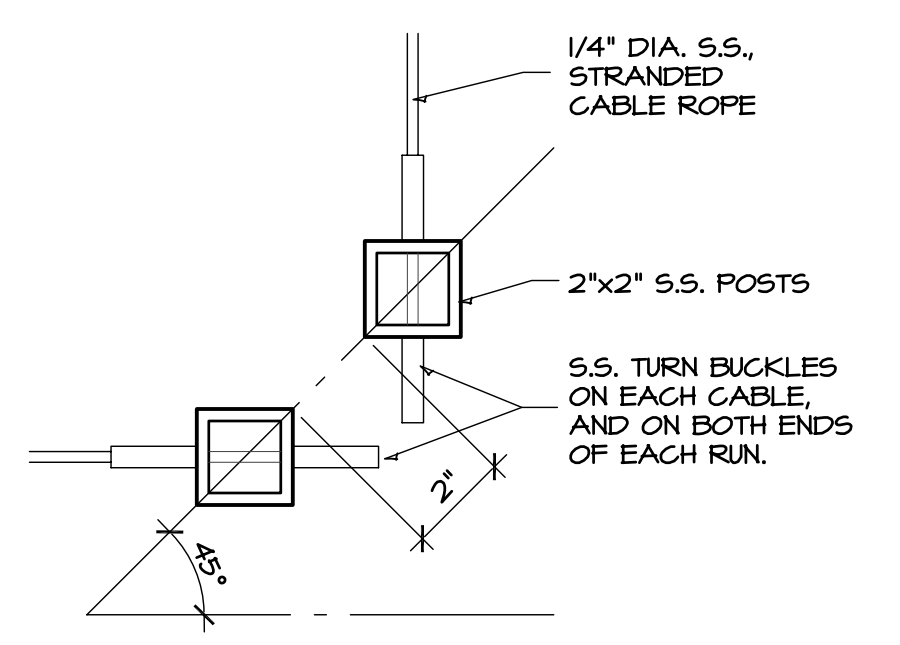
4 RAIL DETAIL
SCALE: 3" = 1'-0"



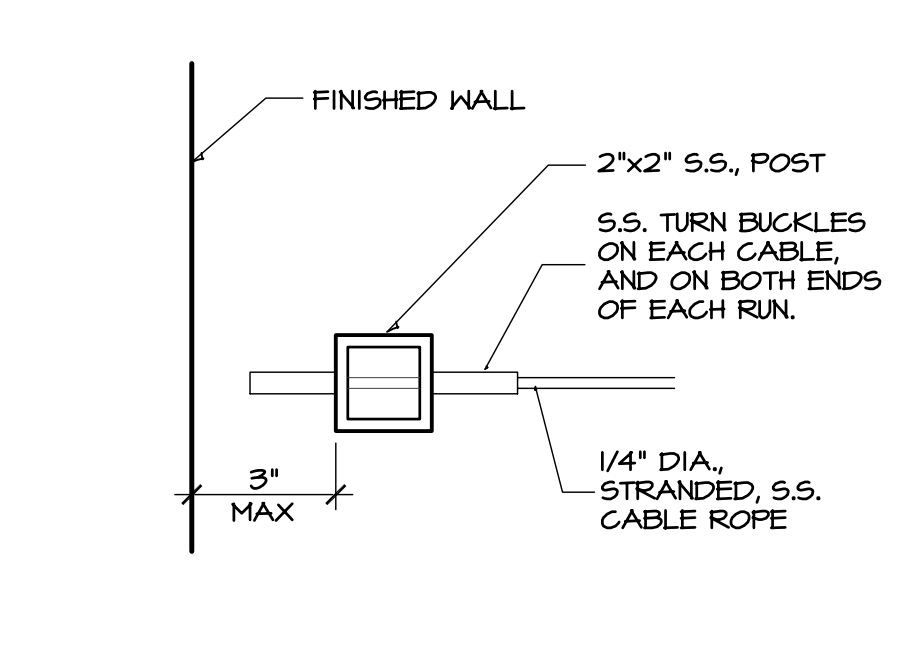
5 RAIL DETAIL
SCALE: 3" = 1'-0"



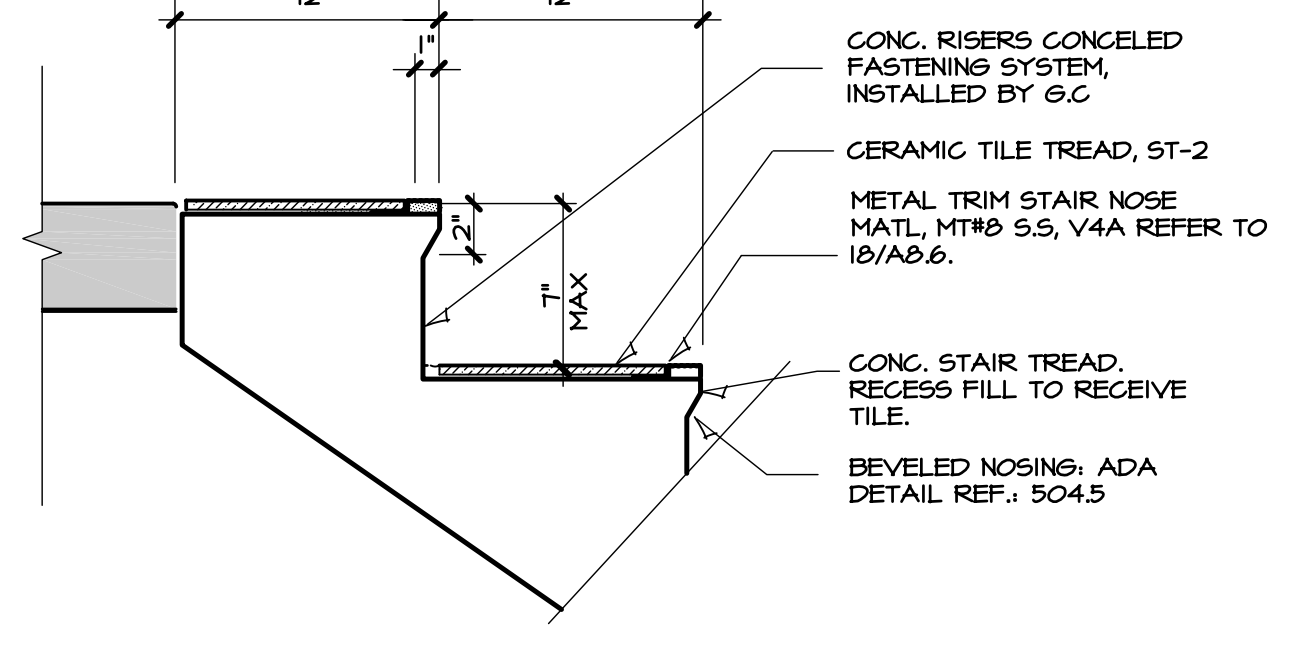
6 RAIL DETAIL
SCALE: 3" = 1'-0"



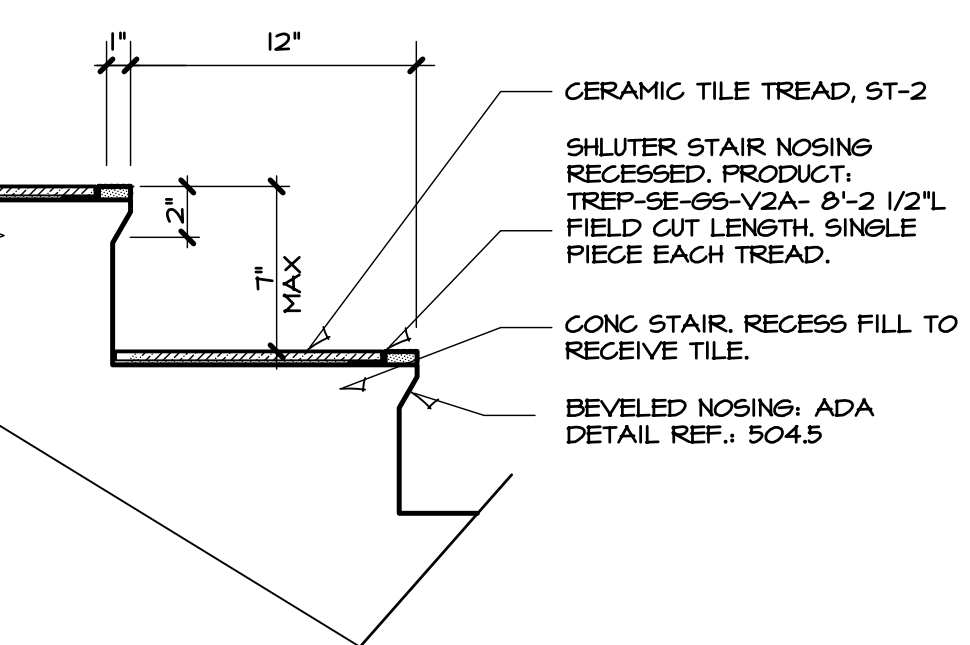
7 RAIL DETAIL
SCALE: 3" = 1'-0"



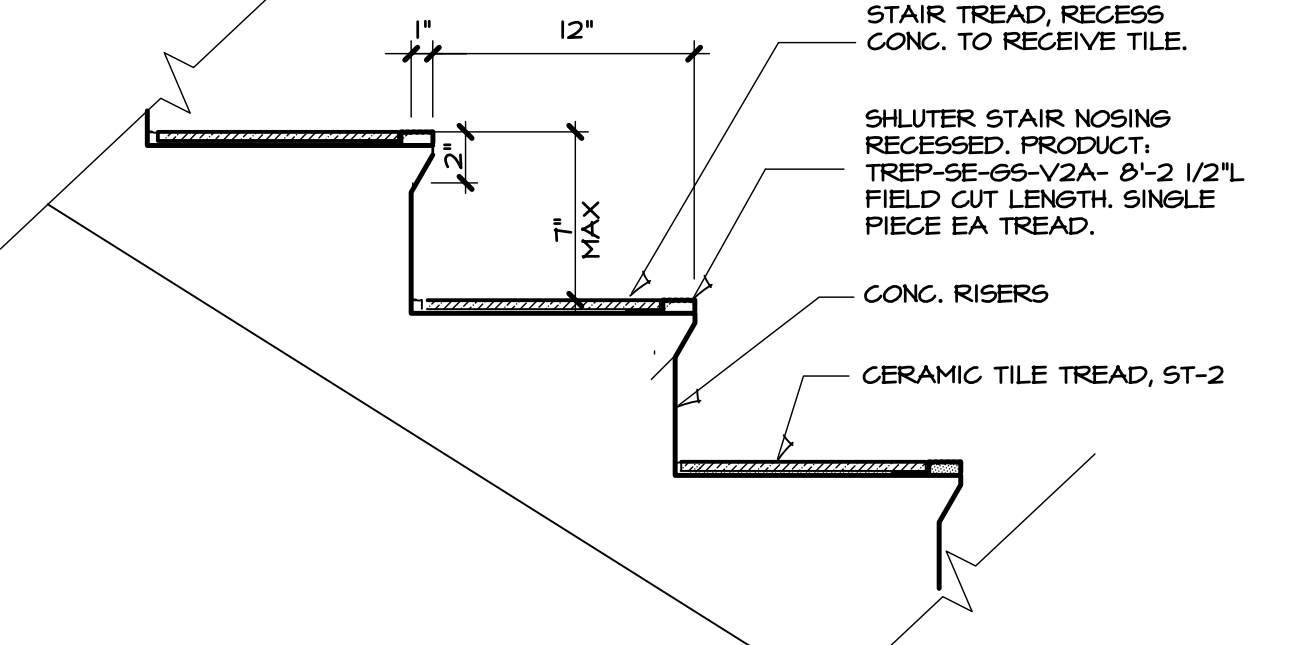
8 RAIL DETAIL
SCALE: 3" = 1'-0"



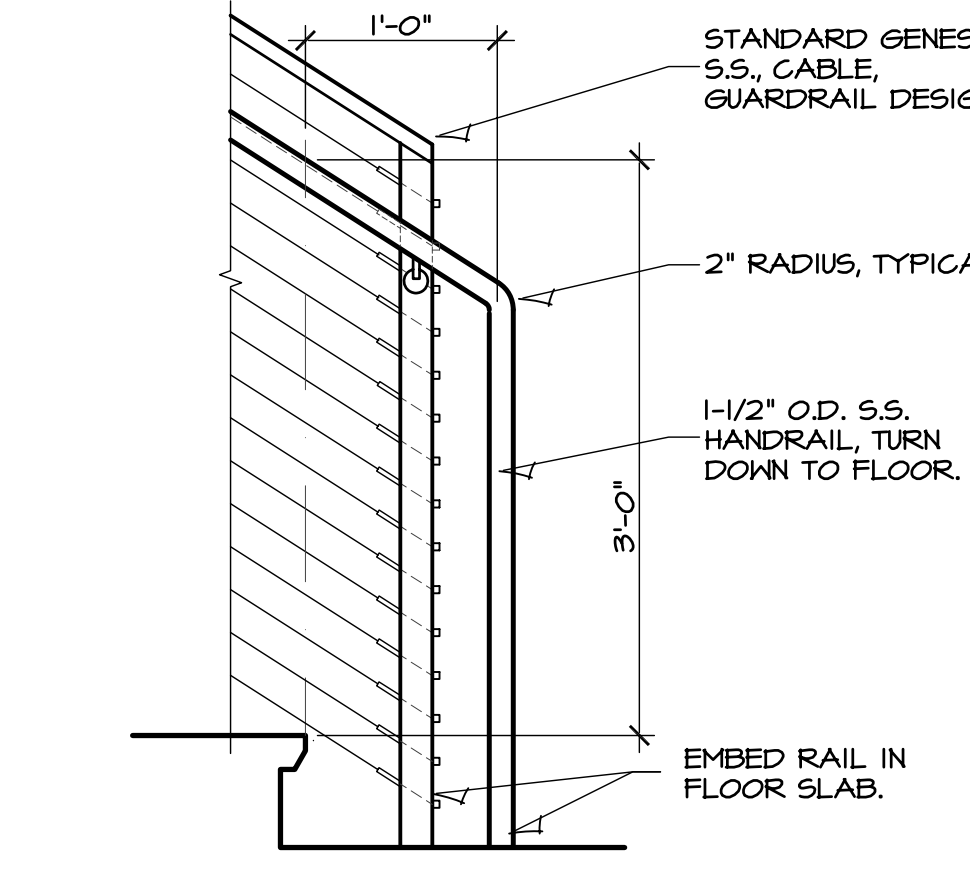
9 CERAMIC TILE FINISH STAIR DETAIL
SCALE: 3" = 1'-0"



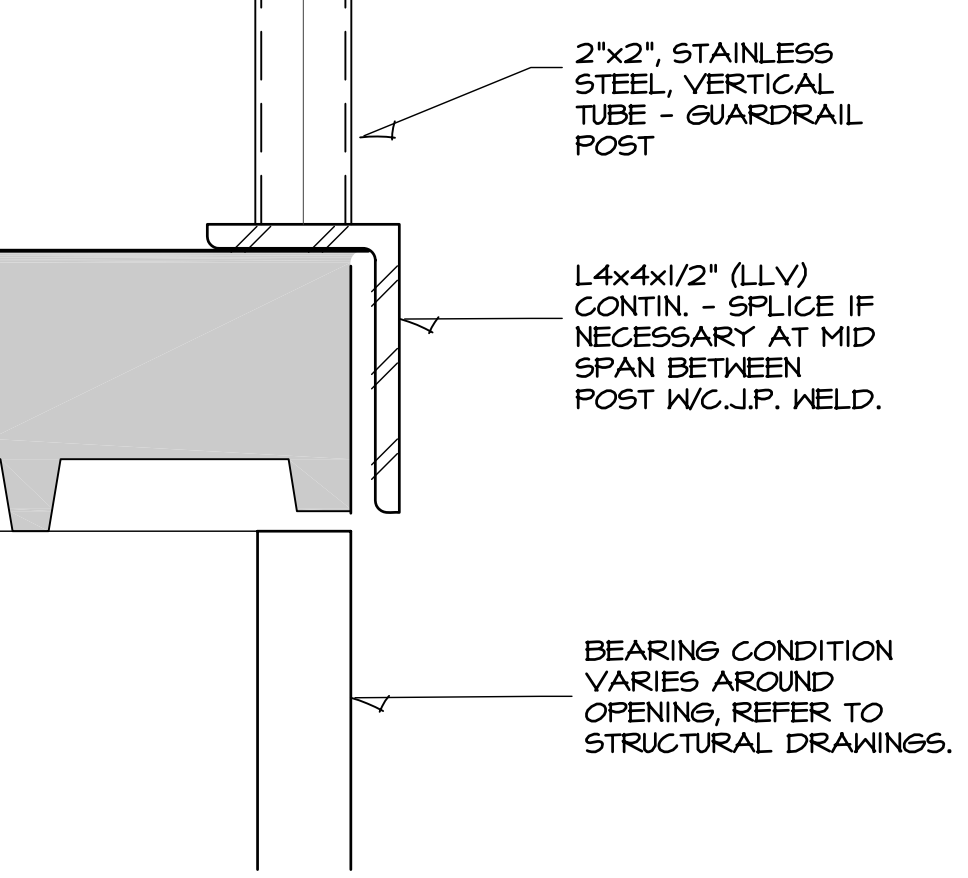
10 CERAMIC TILE FINISH TREAD DETAIL
SCALE: 1-1/2" = 1'-0"



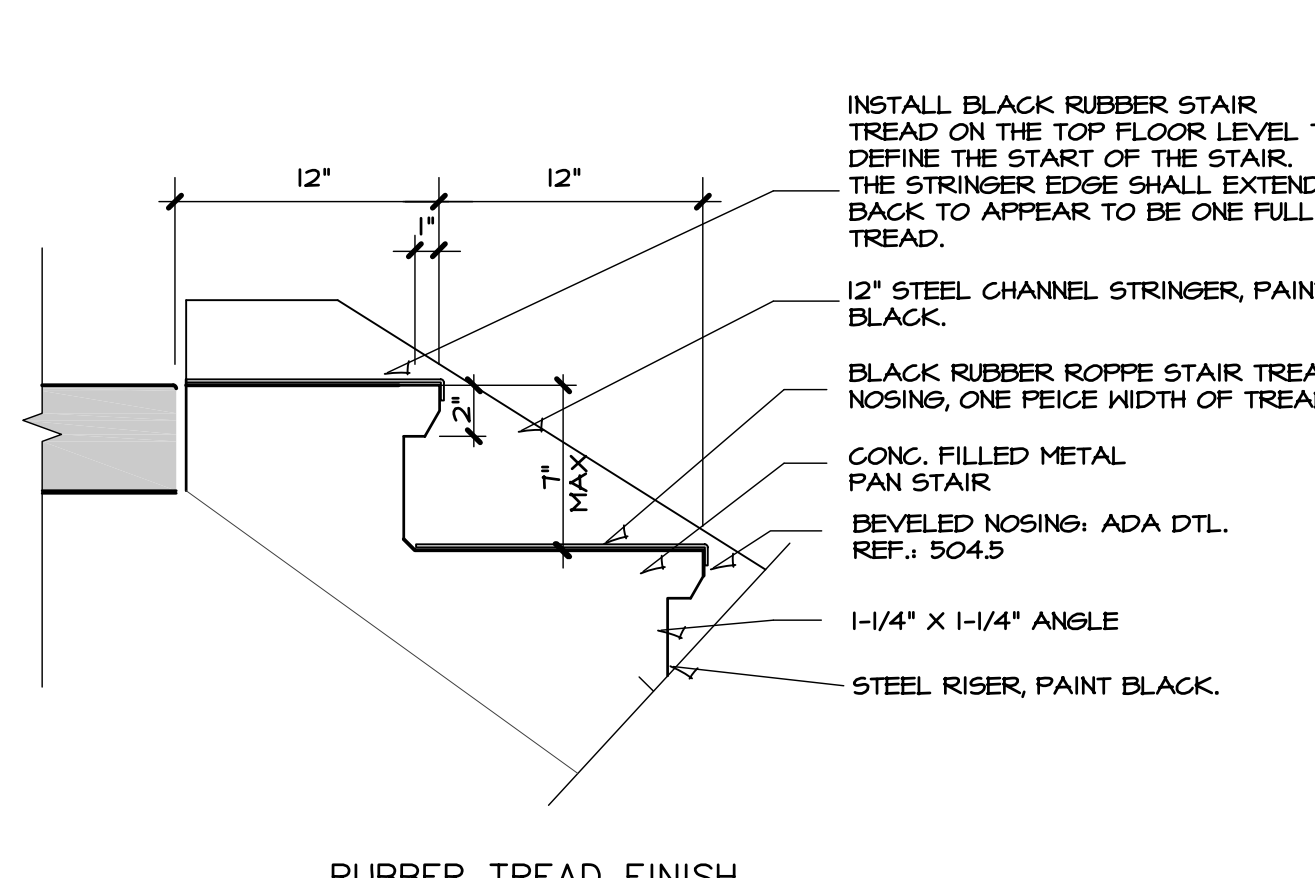
11 CERAMIC TILE FINISH TREAD DETAIL
SCALE: 1-1/2" = 1'-0"



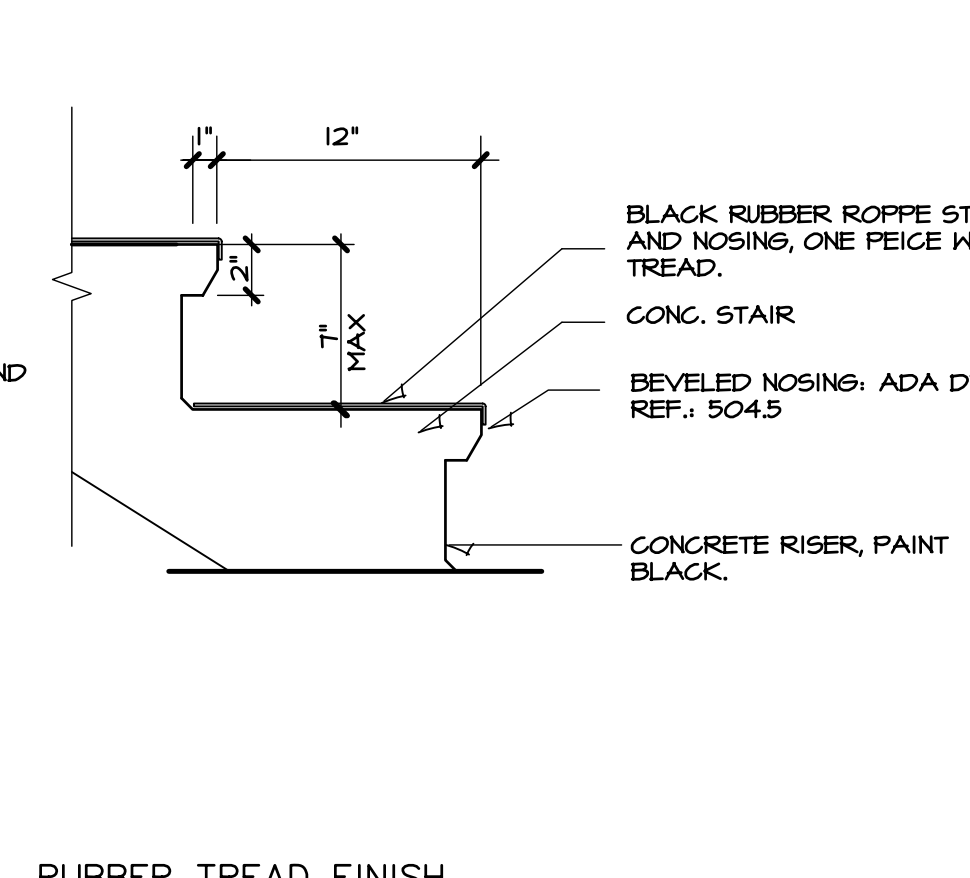
12 RAIL DETAIL
SCALE: 1" = 1'-0"



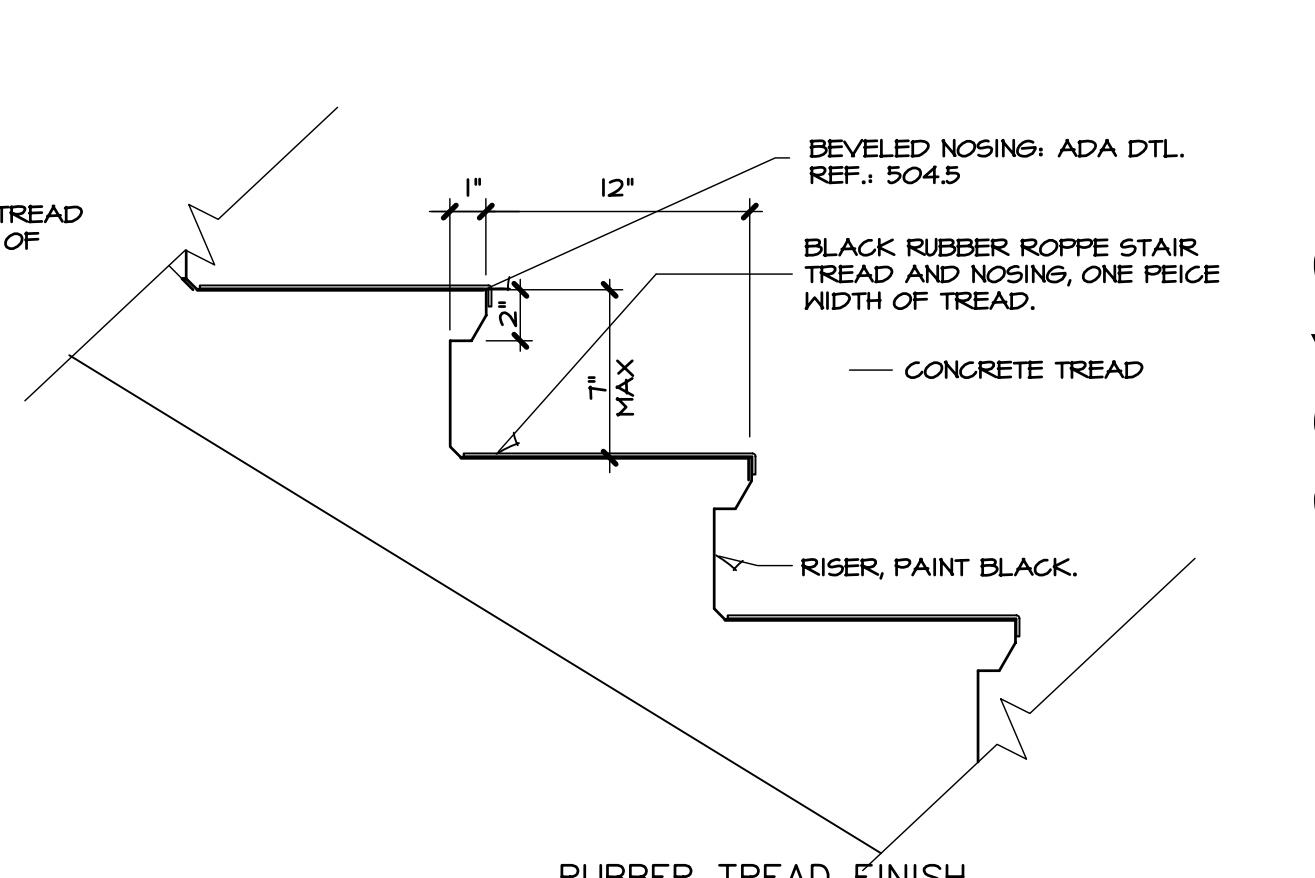
13 RAIL DETAIL
SCALE: 3" = 1'-0"



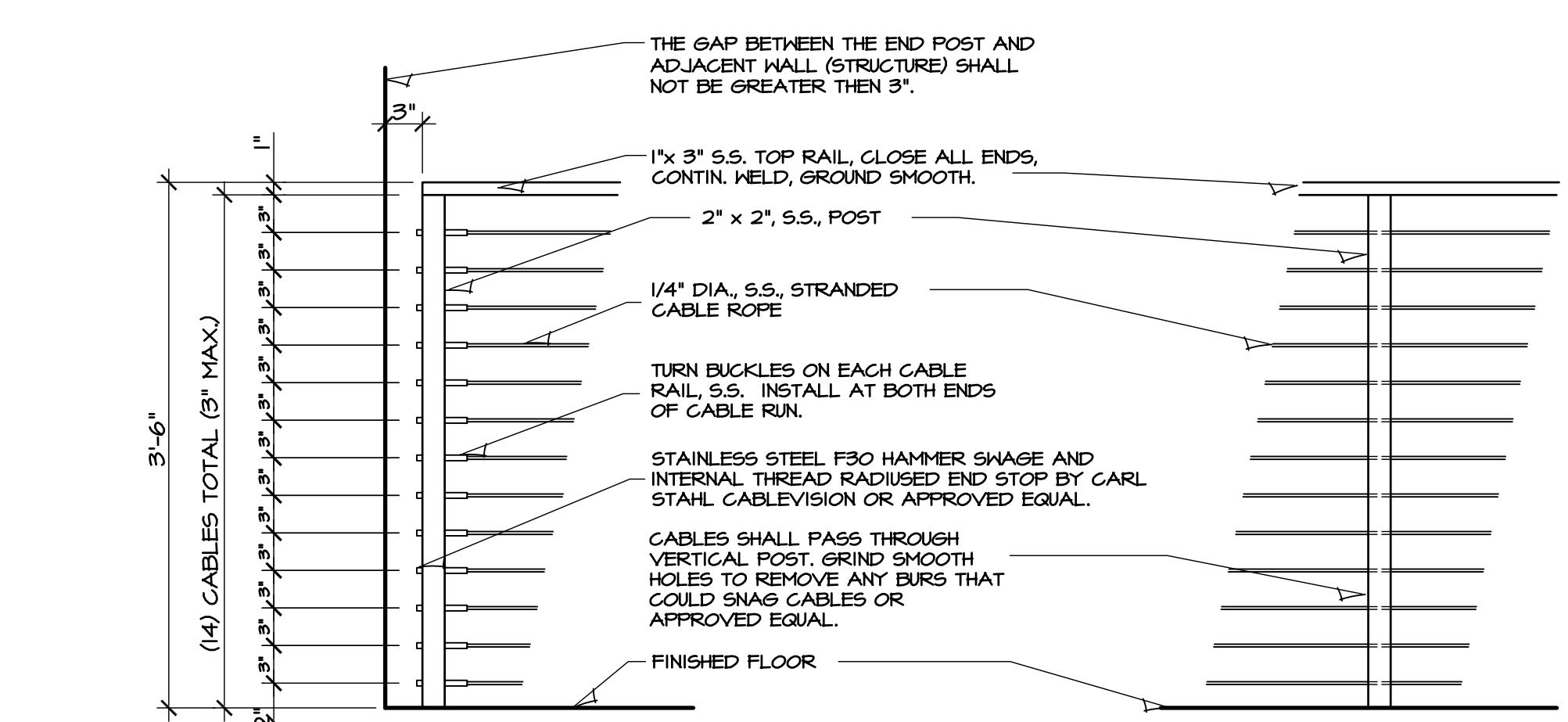
14 RUBBER TREAD FINISH STAIR DETAIL
SCALE: 3" = 1'-0"



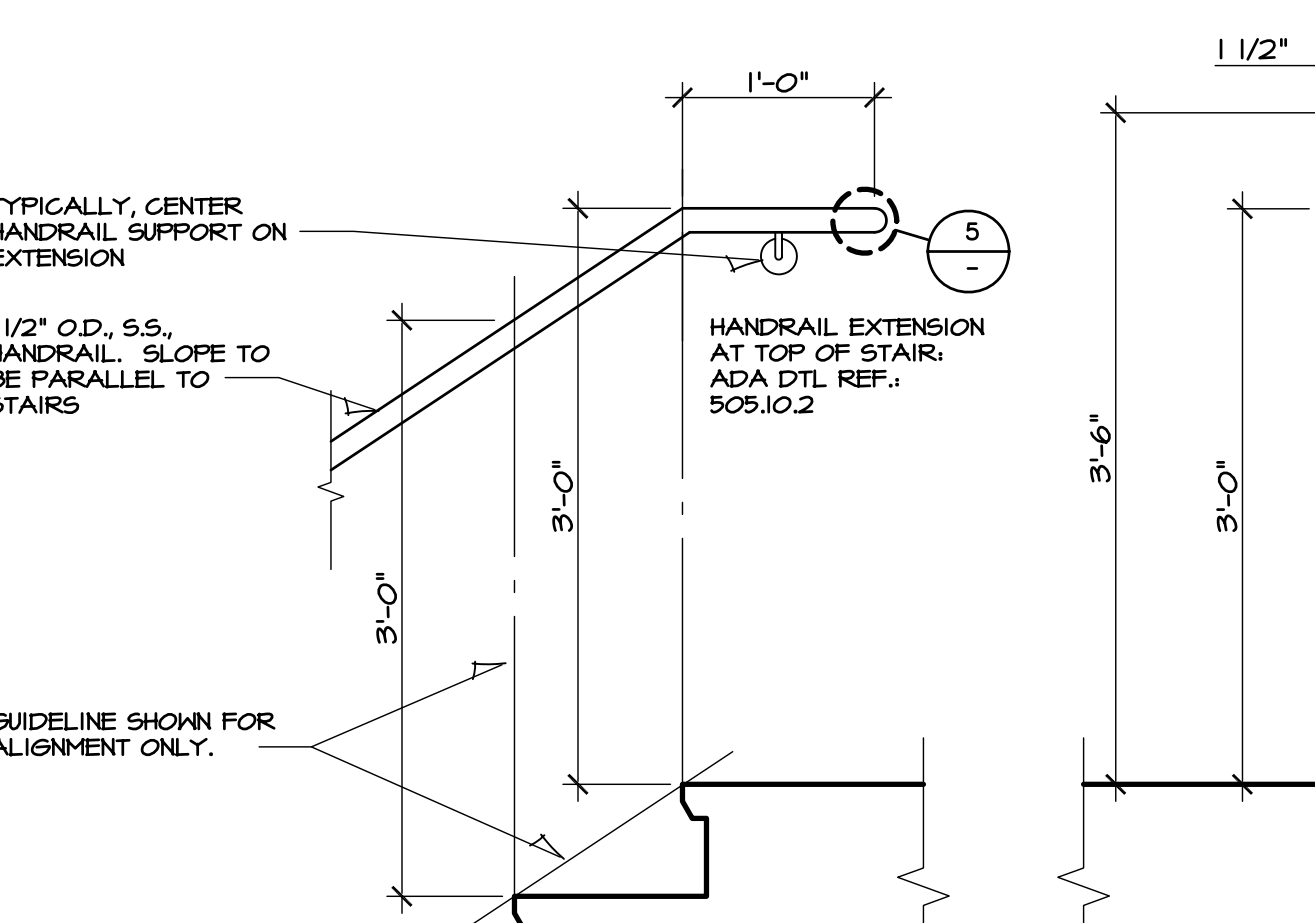
15 RUBBER TREAD FINISH TREAD DETAIL
SCALE: 1-1/2" = 1'-0"



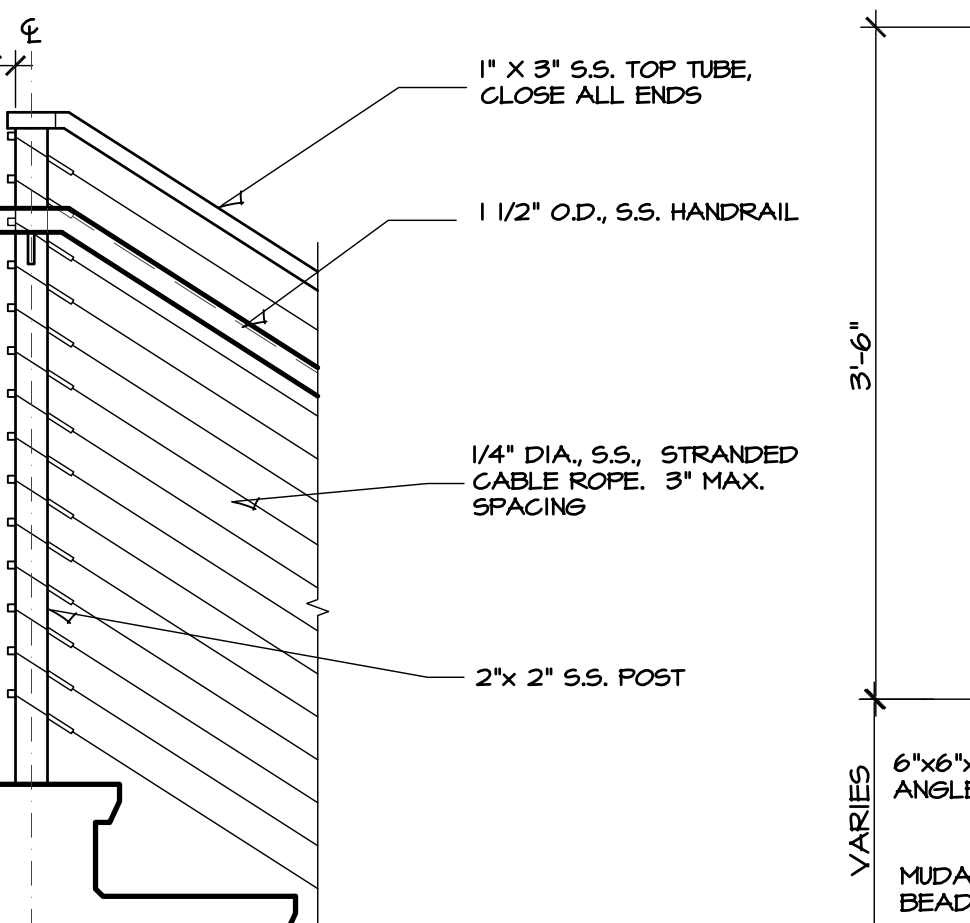
16 RUBBER TREAD FINISH TREAD DETAIL
SCALE: 1-1/2" = 1'-0"



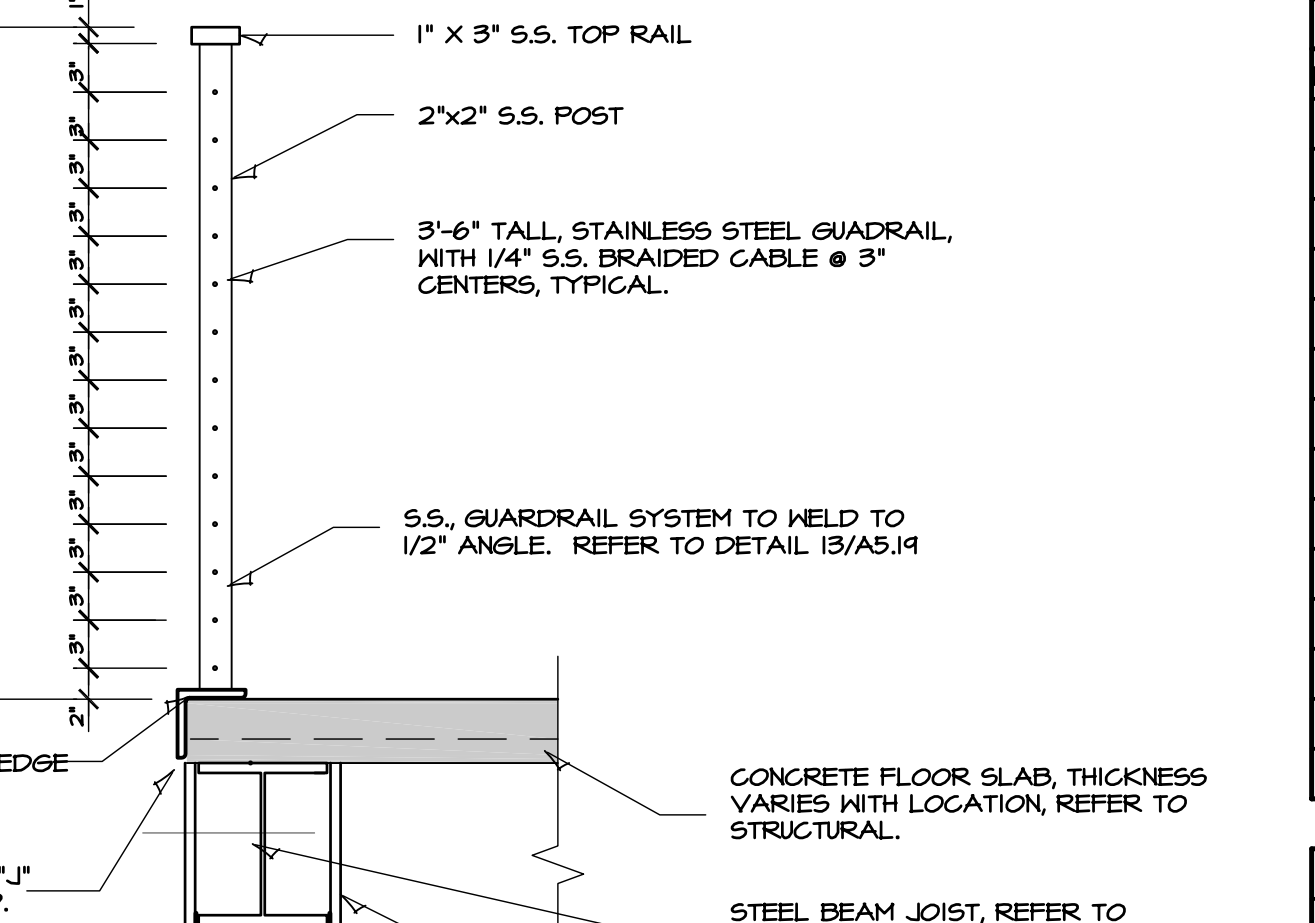
17 GUARDRAIL END POST DETAIL
SCALE: 1" = 1'-0"



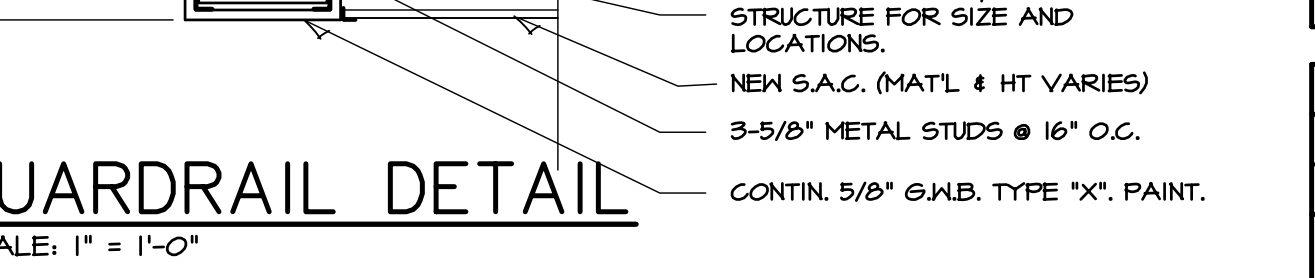
18 GUARDRAIL MID-POST DETAIL
SCALE: 1" = 1'-0"



19 HANDRAIL DETAIL
SCALE: 1" = 1'-0"



20 GUARDRAIL DETAIL
SCALE: 1" = 1'-0"



21 GUARDRAIL DETAIL
SCALE: 1" = 1'-0"

GENERAL NOTES:

1. COMPLY WITH CURRENT AMERICANS WITH DISABILITY ACT STANDARDS FOR ACCESSIBLE DESIGN.
2. COMPONENT MATERIALS: STAINLESS STEEL, TYPE 304, ASTM 301 FINISH: #4 SATIN
3. ALWAYS RETURN WALL MOUNTED RAILS TO WALL PER DETAIL 5/A5.19

DRAWINGS ISSUED			
NO.	DATE	ITEM	ISSUED
21	10/10/19	ADDENDUM #3	
19	04/04/19	BID SET	
18	04/03/19	CODE REVIEW	
17	08/26/19	CODE REVIEW	
16	08/11/19	CODE REVISIONS	
15	06/17/19	CODE REVISIONS	
14	04/22/19	PLAN REVIEW	
13	02/18/19	REVIEW	
12	01/29/19	REVIEW	
11	01/08/19	REVISIONS	
10	12/19/18	REVIEW	
9	11/27/18	REVIEW	

COMPUTER DRAWING
60E_A519.dwg

DATE: APRIL 2019
DRAWN BY: CHECKED BY:
MH, CH, JC, MB MRH

SHEET
A5.19
OF SHEETS