

10/10/19  
**HANNAY & ASSOCIATES, ARCHITECTS**  
 1726 South Hillside, Wichita, Kansas, 67211  
 Phone (316) 683-8965  
 Fax (316) 684-1441

2019  
**GENESIS HEALTH CLUBS WESTROADS**  
 1212 NORTH 102ND STREET  
 OMAHA, NE 68114

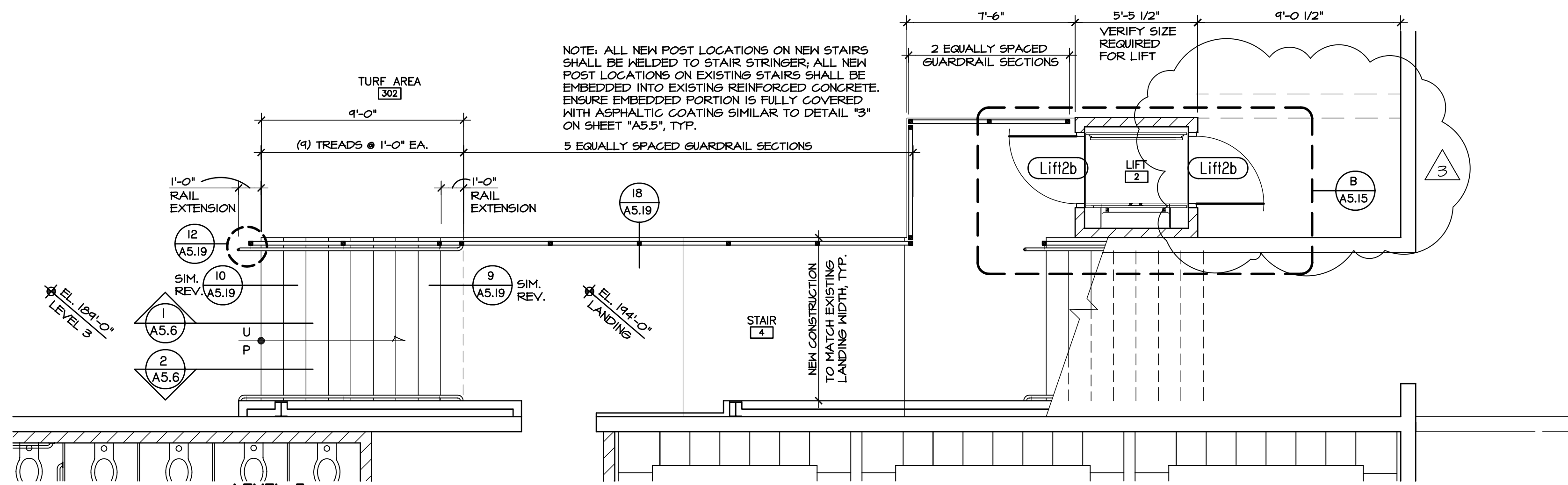


DRAWINGS ISSUED			
NO.	DATE	ITEM	ISSUED
21	10/10/19	ADDENDA #3	
19	09/09/19	BID SET	
18	09/03/19	CODE REVIEW	
17	08/26/19	CODE REVIEW	
16	08/11/19	CODE REVISIONS	
15	06/17/19	CODE REVISIONS	
14	04/22/19	PLAN REVIEW	
13	02/18/19	REVIEW	
12	01/29/19	REVIEW	
11	01/08/19	REVISIONS	
10	12/19/18	REVIEW	
9	11/27/18	REVIEW	

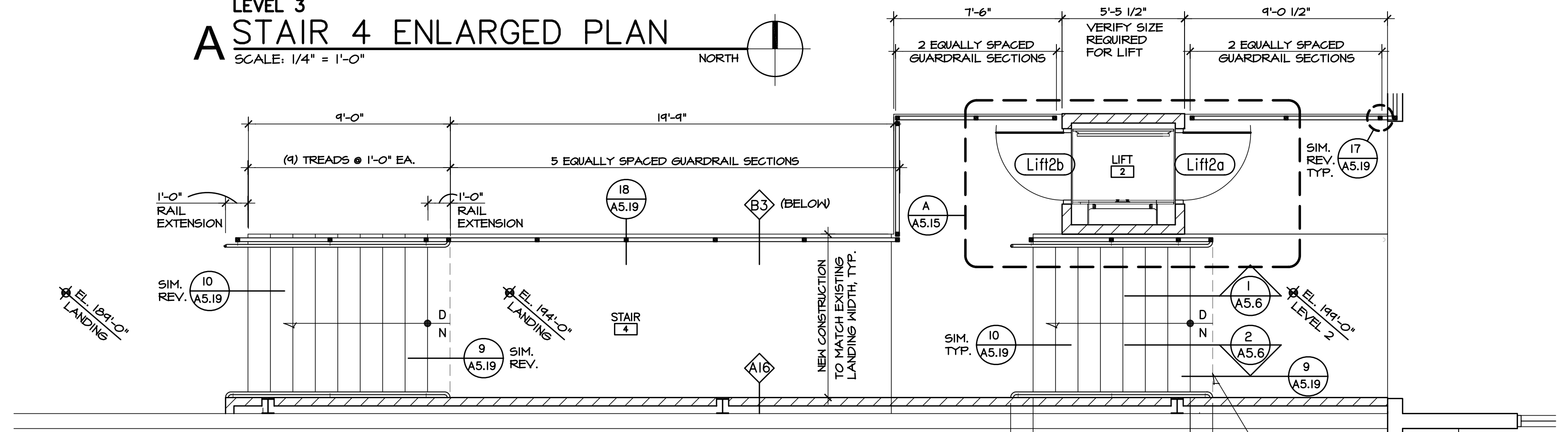
COMPUTER DRAWING  
 60E\_A506.DWG

DATE: APRIL 2019  
 DRAWN BY: CHECKED BY:  
 M4, CH, JC, MB M4M

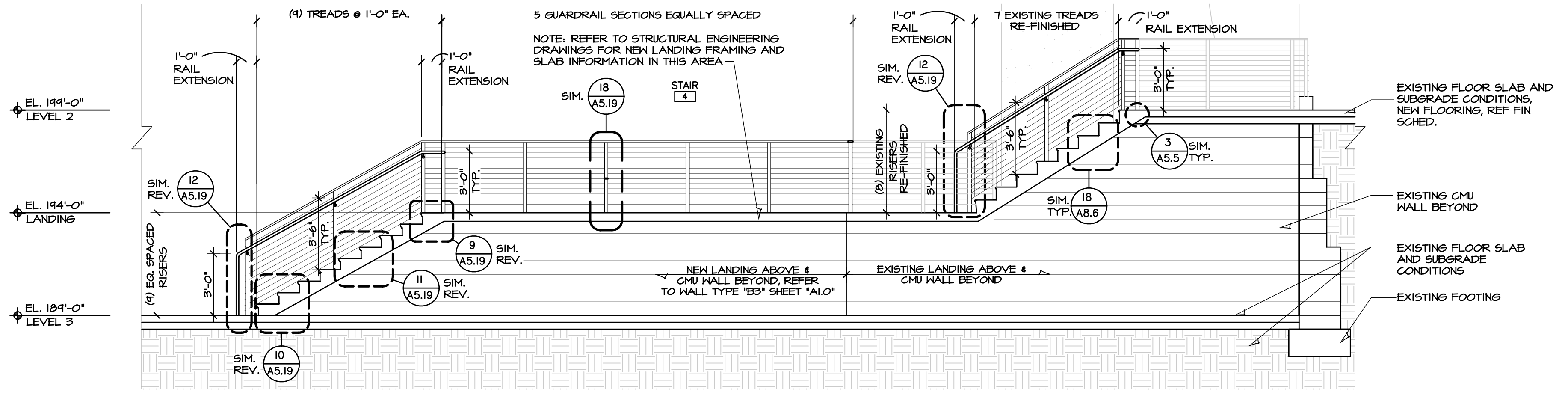
SHEET  
**A5.6**  
 OF SHEETS



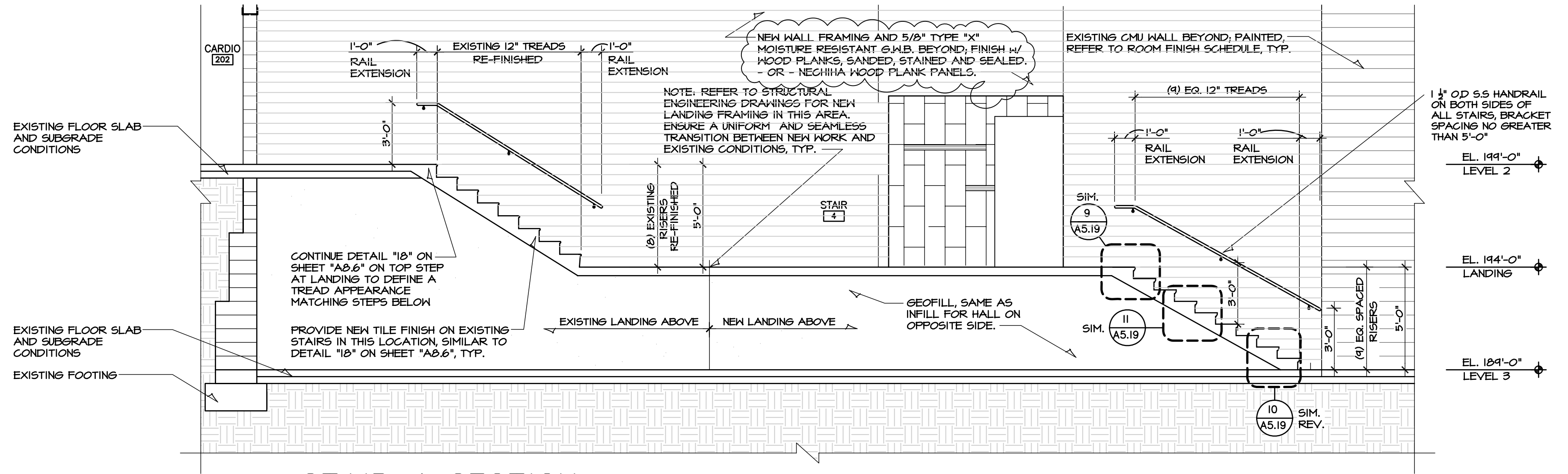
**A STAIR 4 ENLARGED PLAN**  
 SCALE: 1/4" = 1'-0"



**B STAIR 4 ENLARGED PLAN**  
 SCALE: 1/4" = 1'-0"



**1 STAIR 4 SECTION**  
 SCALE: 1/4" = 1'-0"



**2 STAIR 4 SECTION**  
 SCALE: 1/4" = 1'-0"

NOTE: ALL NEW POST LOCATIONS ON NEW STAIRS SHALL BE HELDED TO STAIR STRINGER; ALL NEW POST LOCATIONS ON EXISTING STAIRS SHALL BE EMBEDDED INTO EXISTING REINFORCED CONCRETE. ENSURE EMBEDDED PORTION IS FULLY COVERED WITH ASPHALTIC COATING SIMILAR TO DETAIL "3" ON SHEET "A5.5", TYP.

NOTE: REFER TO STRUCTURAL ENGINEERING DRAWINGS FOR NEW LANDING FRAMING AND SLAB INFORMATION IN THIS AREA.

NOTE: REFER TO STRUCTURAL ENGINEERING DRAWINGS FOR NEW LANDING FRAMING IN THIS AREA. ENSURE A UNIFORM AND SEAMLESS TRANSITION BETWEEN NEW WORK AND EXISTING CONDITIONS, TYP.