

10/02/19
HANNEY & ASSOCIATES, ARCHITECTS
 1726 South Hillside, Wichita, Kansas, 67211
 Phone: (316) 683-8965
 Fax: (316) 684-1441

2019 GENESIS HEALTH CLUBS WESTROADS
 1212 NORTH 102ND STREET
 OMAHA, NE 68114

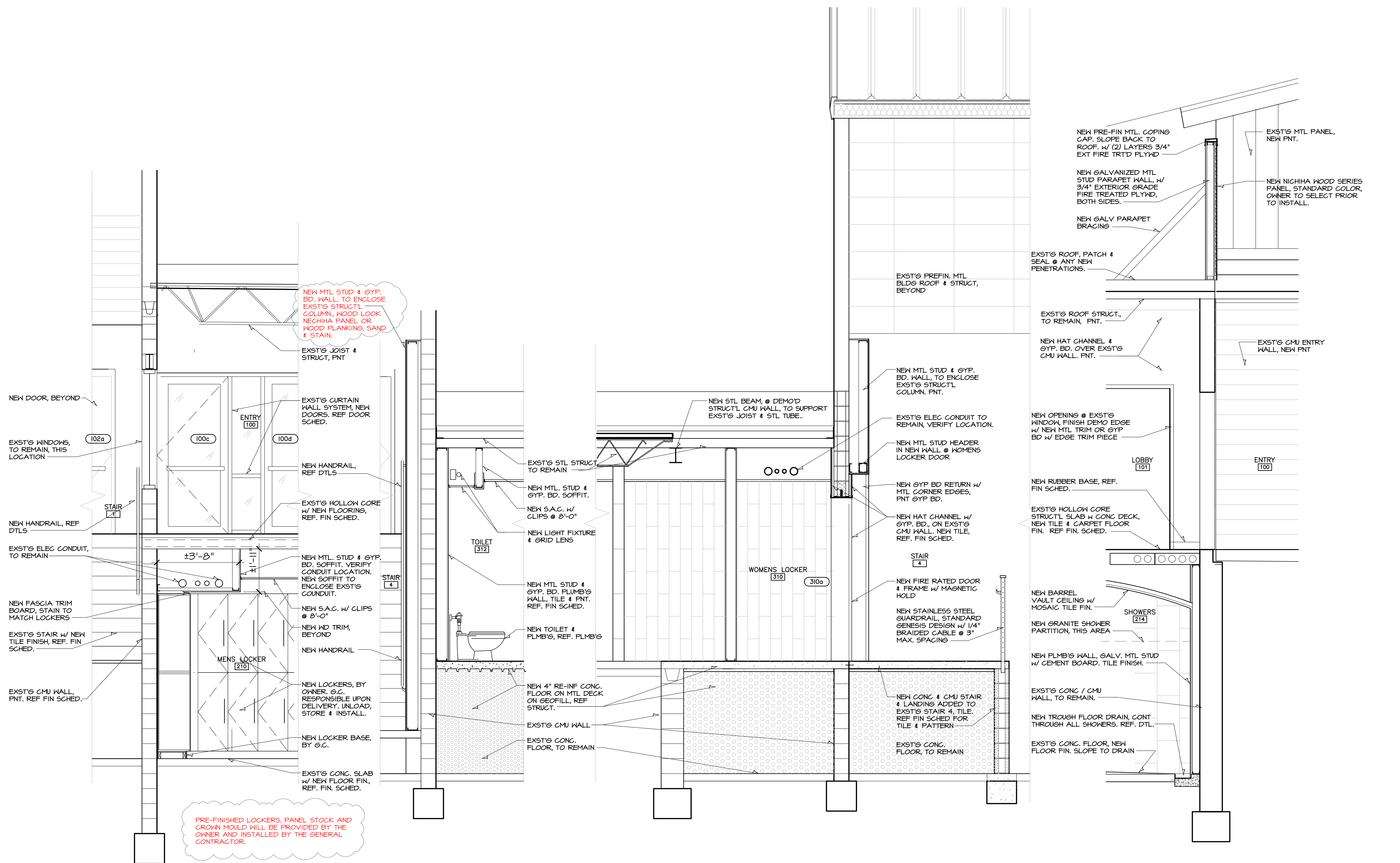


DRAWINGS ISSUED			
NO.	DATE	ITEM	ISSUED
20	10/02/19	ADDENDA #2	
19	04/04/19	BID SET	
18	04/03/19	CODE REVIEW	
17	08/26/19	CODE REVIEW	
16	08/11/19	CODE REVISIONS	
15	06/17/19	CODE REVISIONS	
14	04/22/19	PLAN REVIEW	
13	02/18/19	REVIEW	
12	01/29/19	REVIEW	
11	01/08/19	REVISIONS	
10	12/19/18	REVIEW	
9	11/27/18	REVIEW	

COMPUTER DRAWING
 60E_A504.dwg

DATE: APRIL 2019
 DRAWN BY: CHECKED BY:
 MH, CH, JC, MB MRH

SHEET
A5.4
 OF SHEETS



1 WALL SECTION
 SCALE: 1/2" = 1'-0"

2 WALL SECTION
 SCALE: 1/2" = 1'-0"

3 WALL SECTION
 SCALE: 1/2" = 1'-0"

4 WALL SECTION
 SCALE: 1/2" = 1'-0"

PRE-FINISHED LOCKERS, PANEL STOCK AND CROWN MOULD WILL BE PROVIDED BY THE OWNER AND INSTALLED BY THE GENERAL CONTRACTOR.