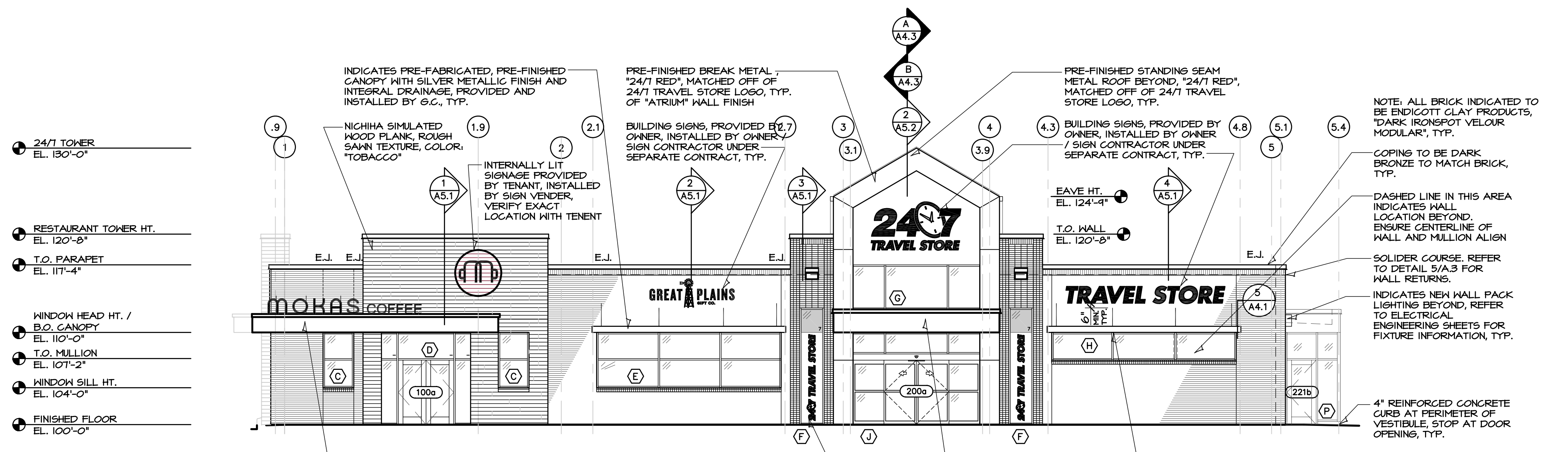


12/10/21
 HANNEY & ASSOCIATES, ARCHITECTS
 1726 South Hillside, Wichita, Kansas, 67211
 Phone (316) 683-8866
 Fax (316) 684-1441
 www.horarchitects.com

2021
 24-7 TRAVEL STORE
 1980 S. Range Ave.
 Colby, Kansas
24/7 TRAVEL STORE



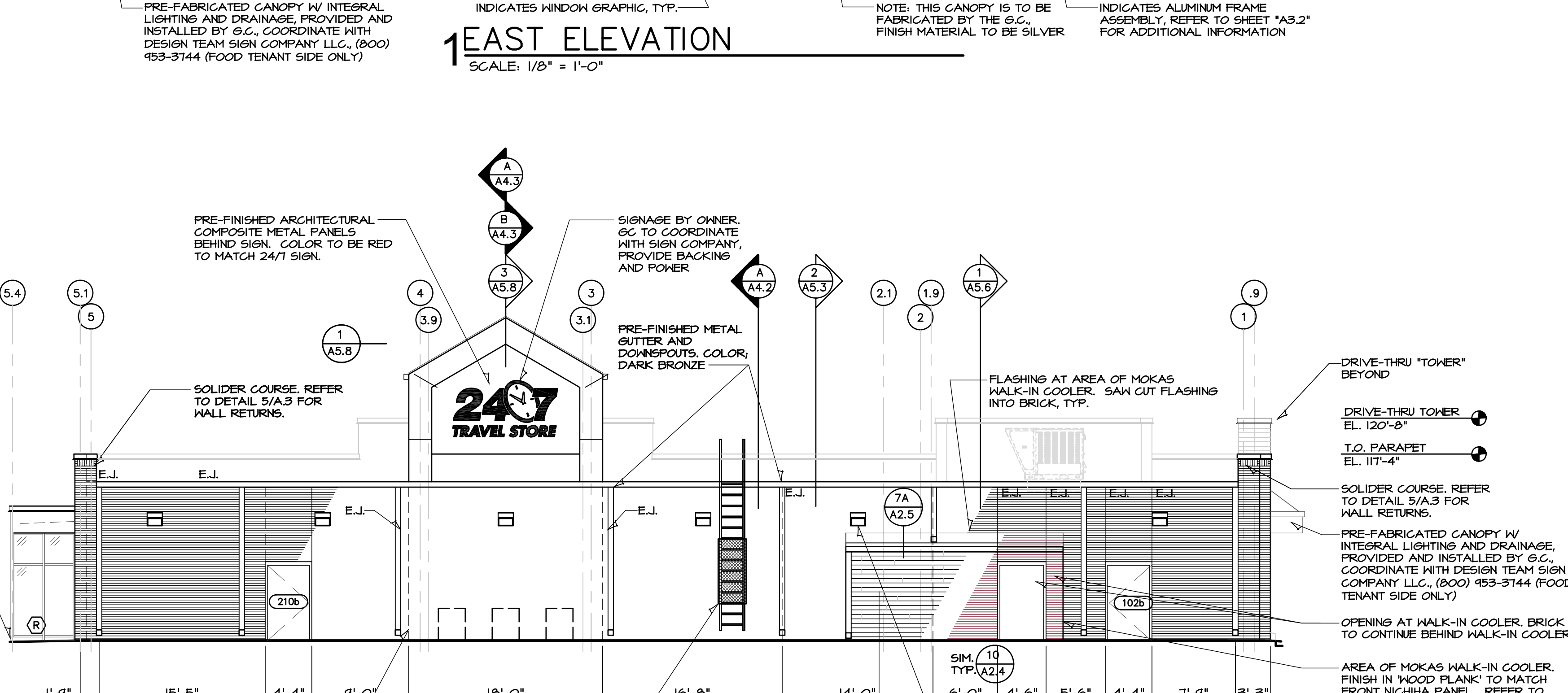
1 EAST ELEVATION
 SCALE: 1/8" = 1'-0"

THE CANOPIES OVER THE 24/7 TRAVEL STORE, WITH THE EXCEPTION OF THE MAIN ENTRANCE CANOPY, SHALL BE PRE-FABRICATED BY UNI-STRUCTURES, INC. SHOP DRAWINGS ARE TO BE SUBMITTED AND APPROVED BY ARCHITECT PRIOR TO FINAL ORDER OR INSTALLATION. THE G.C. SHALL COORDINATE ORDERING (SIZES AND QUANTITIES), PURCHASE, AND INSTALL. DELIVERY AND SCHEDULING CONTACT: ALEX AL-MARRY, A.AL-MARRY@UNISTRUCTURES.COM (678) 414-1763
 SPECIAL PROJECTS COORDINATOR: BETH RAMBLEY, B.RAMBLEY@UNISTRUCTURES.COM (678) 414-1760

24/7 TOWER EL. 130'-0"
 RESTAURANT TOWER HT. EL. 120'-8"
 T.O. PARAFET EL. 117'-4"
 T.O. VESTIBULE EL. 112'-6"
 T.O. GLAZING EL. 110'-0"
 DOOR HEAD HT. EL. 107'-2"
 4" REINFORCED CONCRETE CURB AT PERIMETER OF VESTIBULE, STOP AT DOOR OPENINGS, TYP.
 FINISHED FLOOR EL. 100'-0"

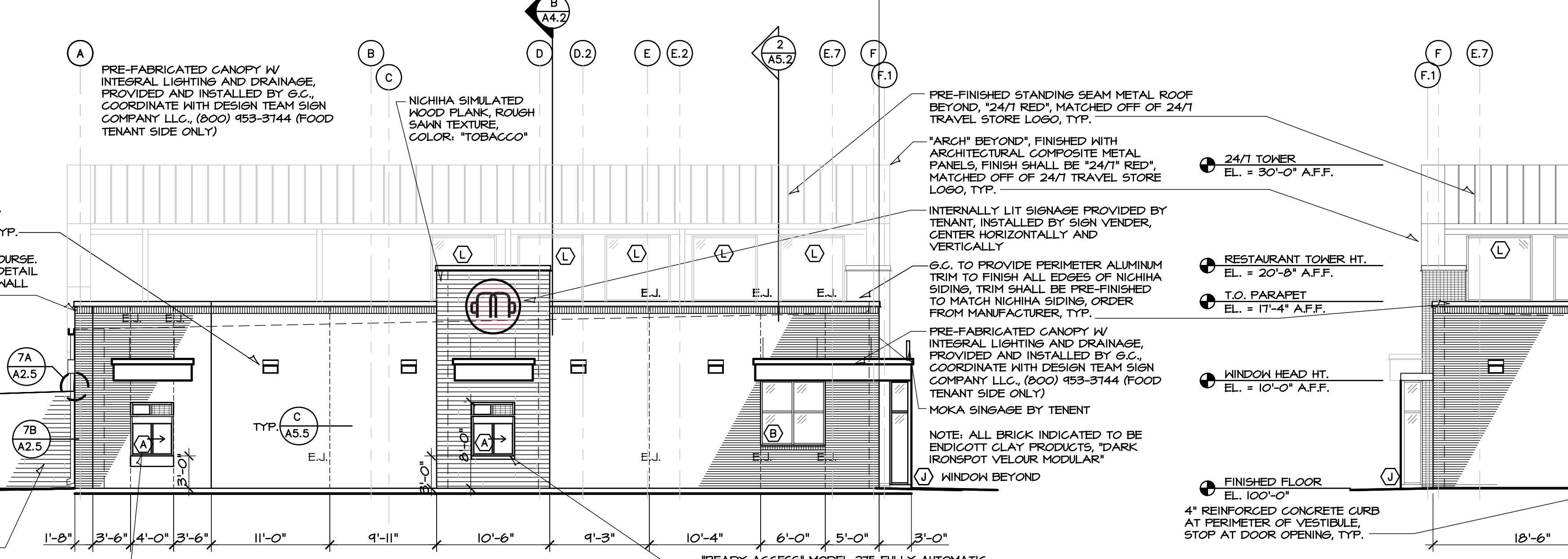
THE CANOPIES OVER THE FOOD TENANT'S WINDOWS SHALL BE PRE-FABRICATED BY DESIGN TEAM SIGN COMPANY, LLC. SHOP DRAWINGS ARE TO BE SUBMITTED AND APPROVED BY ARCHITECT PRIOR TO FINAL ORDERING OR INSTALLATION. THE G.C. SHALL COORDINATE ORDERING (SIZES AND QUANTITIES), PURCHASE, AND INSTALL. DESIGN TEAM SIGN COMPANY, LLC. (800) 453-3144.
 SALES / PROJECT MANAGER: HEATHER BRENTON PICOU (855) 733-4912 (866) 274-9104
 HPI@GOUDESIGNTEAM.NET HERENTON@YAHOO.COM HPI@GOU@VPCSIGNS.COM

24/7 TOWER EL. 130'-0"
 INDICATES NEW WALL PACK LIGHTING, REFER TO ELECTRICAL ENGINEERING SHEETS FOR FIXTURE INFORMATION, TYP.
 RESTAURANT TOWER HT. EL. 120'-8"
 T.O. PARAFET EL. 117'-4"
 B.O. CANOPY EL. 110'-8"
 WINDOW HEAD HT. EL. 107'-2"
 DRIVE THRU OPENING HT. EL. 108'-0"
 WINDOW SILL HT. EL. 104'-0"
 FINISHED FLOOR EL. 100'-0"
 MOKAS WALK-IN COOLER, WOOD PLANK FINISH REFER TO MOKAS DRAWINGS FOR EQUIPMENT.
 "READY ACCESS BUMP" OUT 4" MODEL, COORDINATE WITH TENANT FINISH DRAWINGS



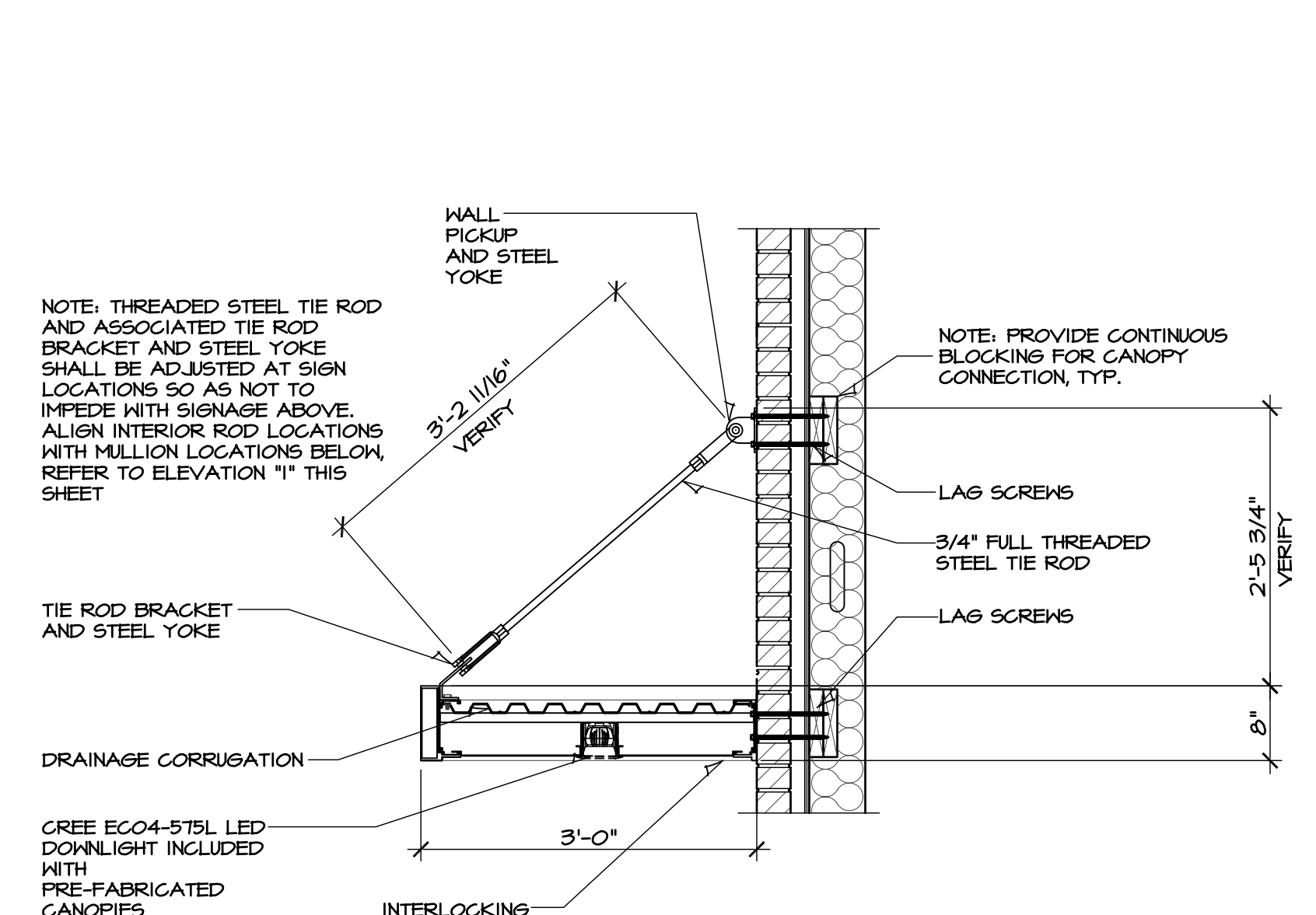
2 WEST ELEVATION
 SCALE: 1/8" = 1'-0"

DRIVE-THRU "TOWER" BEYOND
 DRIVE-THRU TOWER EL. 120'-8"
 T.O. PARAFET EL. 117'-4"
 SOLIDER COURSE, REFER TO DETAIL 5/A.3 FOR WALL RETURNS.
 PRE-FABRICATED CANOPY W/ INTEGRAL LIGHTING AND DRAINAGE, PROVIDED AND INSTALLED BY G.C., COORDINATE WITH DESIGN TEAM SIGN COMPANY, LLC. (800) 453-3144 (FOOD TENANT SIDE ONLY)
 OPENING AT WALK-IN COOLER, BRICK TO CONTINUE BEHIND WALK-IN COOLER.
 AREA OF MOKAS WALK-IN COOLER, FINISH IN WOOD PLANK TO MATCH FRONT NICHHA PANEL. REFER TO MOKAS DRAWINGS FOR EQUIPMENT.

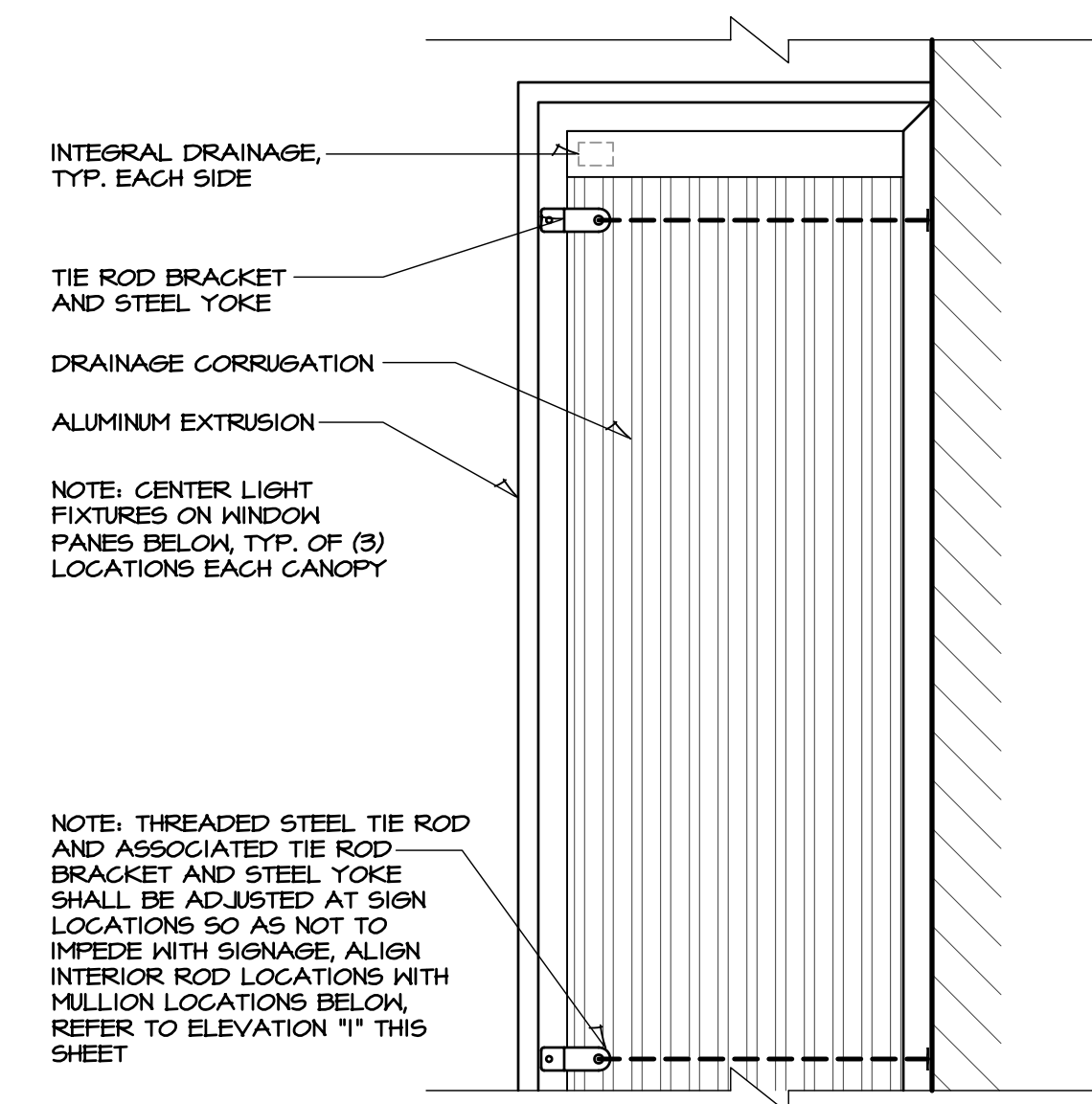


3 SOUTH ELEVATION
 SCALE: 1/8" = 1'-0"

"READY ACCESS" MODEL 275 FULLY AUTOMATIC DRIVE-THRU WINDOW, REFER TO ALUMINUM FRAME TYPES FOR ADDITIONAL INFORMATION, COORDINATE WITH TENANT FINISH DRAWINGS

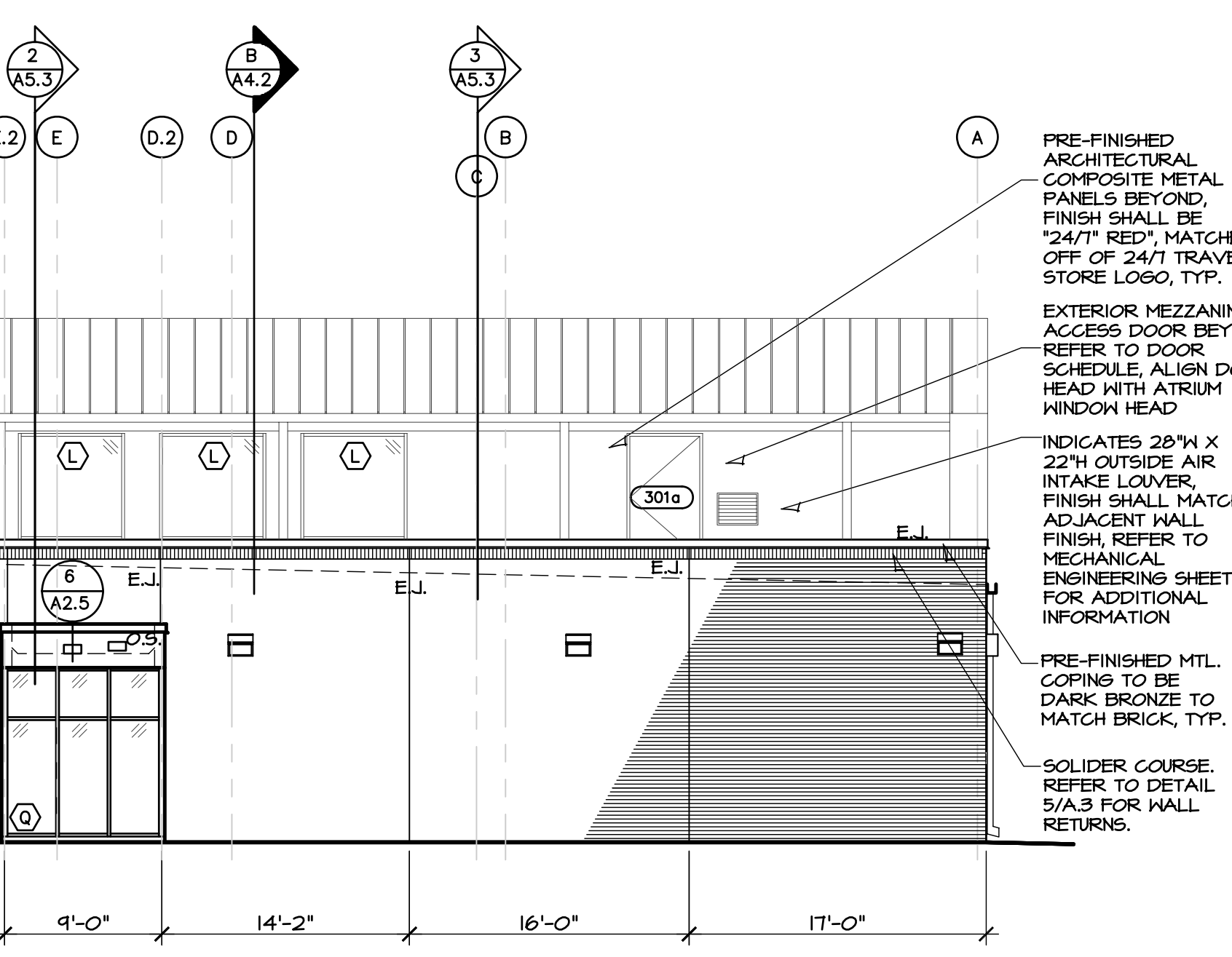


SECTION



PARTIAL PLAN VIEW

5 24/7 PRE-FAB CANOPY DETAILS
 SCALE: N.T.S.



4 NORTH ELEVATION
 SCALE: 1/8" = 1'-0"

DRAWINGS ISSUED		
NO.	DATE	ITEM ISSUED
7	01/6/22	ADDENDUM #2
6	12/10/21	BID SET
5	11/05/21	FINAL PROGRESS
4	10/06/21	PROGRESS SET
3	04/17/21	PROGRESS SET
2	06/17/21	PROGRESS SET
1	04/27/21	START DATE

COMPUTER DRAWING
 C:\A4.01.DWG

DATE: APRIL, 2021
 DRAWN BY: BS, JC, TH
 CHECKED BY: MH

SHEET
A4.1
 OF SHEETS