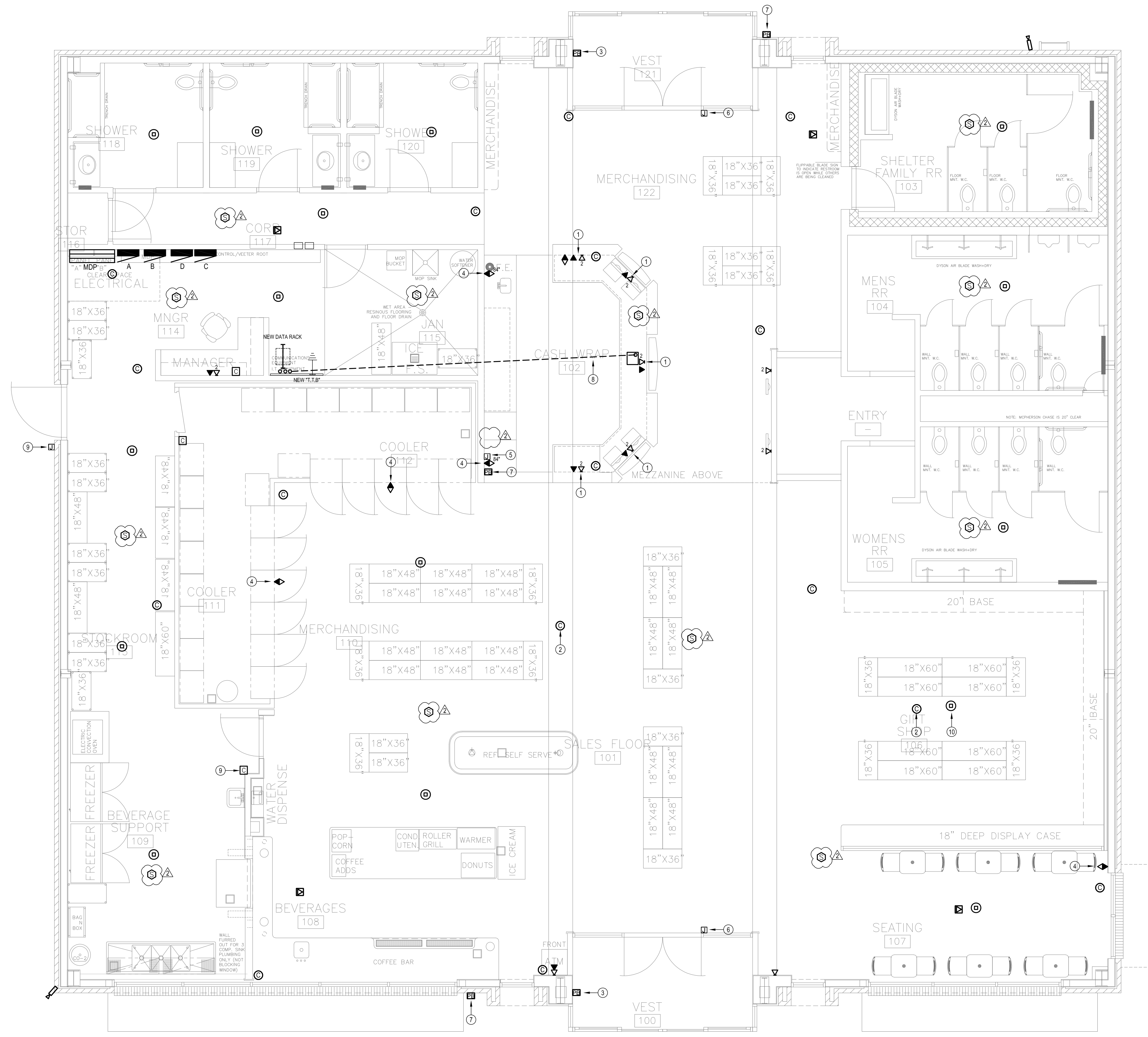


HANEY & ASSOCIATES, ARCHITECTS
 1726 South Hillside, Wichita, Kansas, 67211
 Phone (316) 683-8965
 Fax (316) 684-1441
 www.haarchitects.com



LOW VOLTAGE PLAN NOTES

- 1 DATA DROP WITH CASEWORK. COORDINATE WITH ARCHITECTURAL ELEVATIONS AND CASEWORK SUBMITTALS FOR EXACT ROUGH-IN LOCATION. PROVIDE INDICATED NUMBER OF CAT 6 CABLES BACK TO IT RACK.
- 2 SECURITY CAMERA LOCATION. PROVIDE CAT 6 TO IT RACK AND ROUGH-IN BACK BOX AS NECESSARY. VERIFY QUANTITY AND LOCATION WITH OWNER PRIOR TO ROUGH-IN. TYPICAL.
- 3 PUSH BUTTON FOR DOOR BUZZER SYSTEM. COORDINATE EXACT LOCATION WITH OWNER.
- 4 TV OUTLET FOR TV MOUNTED ADJACENT TO RECEPTACLE SHOWN ON POWER PLAN. COORDINATE HEIGHT AND LOCATION WITH TV MOUNT.
- 5 PROVIDE AND INSTALL POWER SUPPLY FOR DOOR BUZZER SYSTEM.
- 6 PROVIDE AND INSTALL WIRED CUSTOMER NOTIFICATION SYSTEM EQUAL TO RODANN ELECTRONICS AV-220 SERIES. PROVIDE AND INSTALL WALL MOUNTED SPEAKER AND LOW VOLTAGE TRANSFORMER. EC SHALL PROVIDE A COMPLETE WORKING SYSTEM. REFER TO MANUFACTURERS INSTRUCTIONS FOR DETAILS AND EXACT COMPONENTS.
- 7 PUSH BUTTON FOR EMERGENCY FUEL SHUTOFF.
- 8 (2) 2" RACEWAYS FROM ITB TO ACCESSIBLE LOCATION WITHIN CASEWORK.
- 9 ROUGH-IN FOR RECESSED WEATHER PROOF INTERCOM STATION PROVIDED BY OWNER. CONNECT TO INTERCOM SYSTEM.
- 10 SPEAKER SYSTEM PROVIDED AND INSTALLED BY OWNER. COORDINATE ROUGH-IN REQUIREMENTS WITH OWNER.

2021
 24-7 TRAVEL STORE
 1415 S. Fossil St.
 Russell, Kansas 67665

24/7 TRAVEL STORE

DRAWINGS ISSUED		
NO.	DATE	ITEM ISSUED
9	01/10/22	ADDENDUM 2
8	12/10/21	BID SET
7	11/10/21	REVISIONS
6	9/10/21	CONSTRUCTION SET
5	8/20/21	FINAL REVIEW
4	8/06/21	CHECK SET
3	7/16/21	COORDINATION SET
2	6/17/21	CHECK SET
1	4/27/21	START DATE

COMPUTER DRAWING

DATE: DECEMBER 2021
 DRAWN BY: CW
 CHECKED BY: SM

SHEET

E4.1

OF SHEETS

A ELECTRICAL LOW VOLTAGE PLAN
 SCALE: 1/4" = 1'-0"
 NORTH