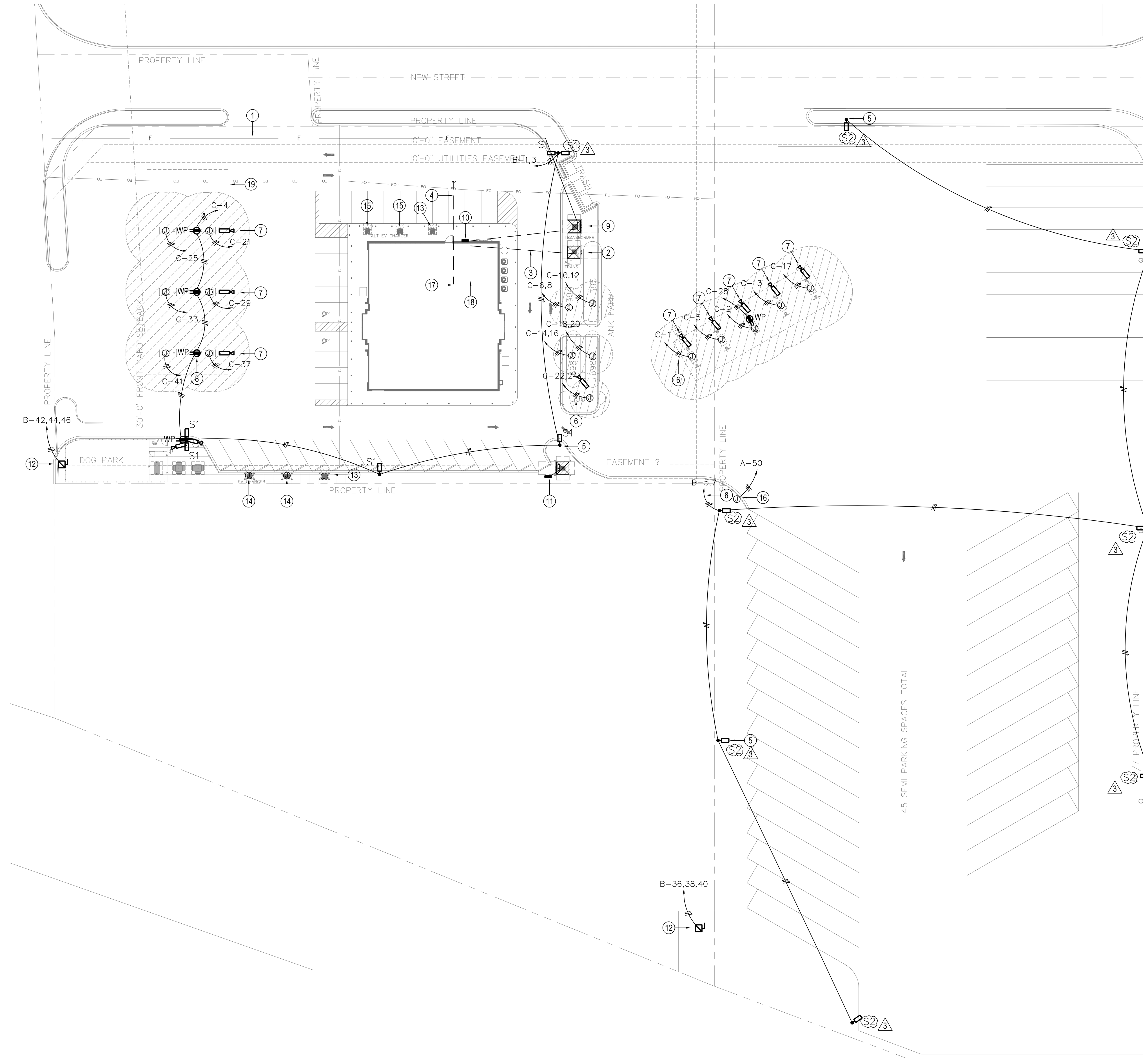




HANNEY & ASSOCIATES, ARCHITECTS
 1726 South Hillside, Wichita, Kansas, 67211
 Phone (316) 683-8965
 Fax (316) 684-1441
 www.haarchitects.com



SITE PLAN NOTES

- 1 ANTICIPATED LOCATION OF NEW 3Ø UTILITY COMPANY PRIMARY. COORDINATE WITH UTILITY COMPANY REPRESENTATIVE AND ALERT ENGINEER OF ANY DISCREPANCY.
- 2 LOCATION OF NEW PAD MOUNTED UTILITY TRANSFORMER COORDINATE ALL REQUIREMENTS WITH UTILITY COMPANY. INCLUDE ALL UTILITY COSTS IN BASE BID.
- 3 NEW SERVICE ENTRANCE CONDUCTORS TO NEW PANEL MDP. ROUTE AT 48" BELOW FINISHED GRADE. SEE RISER DIAGRAM.
- 4 PROVIDE AND INSTALL (2) 2" CONDUITS TO PHONEDATA DEMARK LOCATION FOR SERVICE TO BUILDING. PROVIDE EACH EMPTY CONDUIT WITH PULLWIRE. VERIFY ALL REQUIREMENTS WITH SERVICE PROVIDER(S) PRIOR TO BID.
- 5 LOCATE CENTER OF POLE BASE 5'-0" FROM EDGE OF CURB. SEE ELEVATED LIGHT POLE BASE DETAIL ON THIS SHEET. TYPICAL ALL LIGHT POLE LOCATIONS.
- 6 (2) #10 AWG, (1) #10 G. IN 3/4" CONDUIT AT 36" BELOW FINISHED GRADE. HOMERUNS TO BE LOCATED AS INDICATED ON PLAN FOR VOLTAGE DROP PURPOSES. ROUTE ALL CONDUIT AROUND INDICATED HAZARDOUS LOCATIONS. TYPICAL ALL UNDERGROUND EXTERIOR CIRCUITS.
- 7 DOME CAMERA IN CANOPY. COORDINATE LOCATION WITH OWNER PRIOR TO ROUGH-IN.
- 8 WEATHER RESISTANT RECEPTACLE AT CANOPY COLUMN. MOUNT AT 60" AFG. PROVIDE AND INSTALL METALLIC, WHILE-IN-USE, WEATHER PROOF COVER.
- 9 ALTERNATE LOCATION FOR UTILITY TRANSFORMER SERVING PANEL EV.
- 10 ALTERNATE LOCATION FOR PANEL EV.
- 11 BASE BID LOCATION FOR PANEL EV. PROVIDE AND INSTALL STRUCTURAL STEEL MOUNTING FRAME FOR ELECTRICAL EQUIPMENT INSTALLATION PER DETAIL.
- 12 LOCKABLE DISCONNECT SWITCH FOR SIGNAGE. VERIFY ELECTRICAL REQUIREMENTS WITH SIGN SUBMITTAL PRIOR TO ROUGH-IN.
- 13 FUTURE CHARGER LOCATION. PROVIDE AND INSTALL SPARE BREAKER AND CONDUIT STUBBED INTO QUASITE BOX AT THIS LOCATION. PROVIDE PULLWIRE IN CONDUIT AND CAP FOR FUTURE USE.
- 14 BASE BID EV CHARGER LOCATION. PROVIDE AND INSTALL ELECTRICAL CONNECTION AS INDICATED ON RISER DIAGRAM TO THIS LOCATION.
- 15 ALTERNATE BID EV CHARGER LOCATION. PROVIDE AND INSTALL ELECTRICAL CONNECTION AS INDICATED ON RISER DIAGRAM TO THIS LOCATION.
- 16 PROVIDE ROUGH-IN FOR FUTURE POWERED GATE AT THIS LOCATION.
- 17 APPROXIMATE LOCATION OF SERVER RACK WITHIN BUILDING.
- 18 APPROXIMATE LOCATION OF WIREWAY WITHIN BUILDING.
- 19 BID ALTERNATE TO EXTEND CANOPY AND LOCATE EV CHARGERS UNDER CANOPY EXTENSION. REFER TO ARCHITECTURAL FOR DESCRIPTION.

2021
24-7 TRAVEL STORE
 1415 S. Fossil St.
 Russell, Kansas 67665

24/7
TRAVEL STORE

DRAWINGS ISSUED		
NO.	DATE	ITEM ISSUED
10	01/14/22	ADDENDUM 3
9	01/07/22	ADDENDUM 2
8	12/10/21	BID SET
7	11/10/21	REVISIONS
6	9/10/21	CONSTRUCTION SET
5	8/20/21	FINAL REVIEW
4	8/06/21	CHECK SET
3	7/16/21	COORDINATION SET
2	6/17/21	CHECK SET
1	4/21/21	START DATE

COMPUTER DRAWING

DATE: DECEMBER 2021
 DRAWN BY: CW CHECKED BY: SM

SHEET
ES1.1
 OF SHEETS

A **ELECTRICAL SITE PLAN**
 SCALE: 1" = 30'-0"
 NORTH