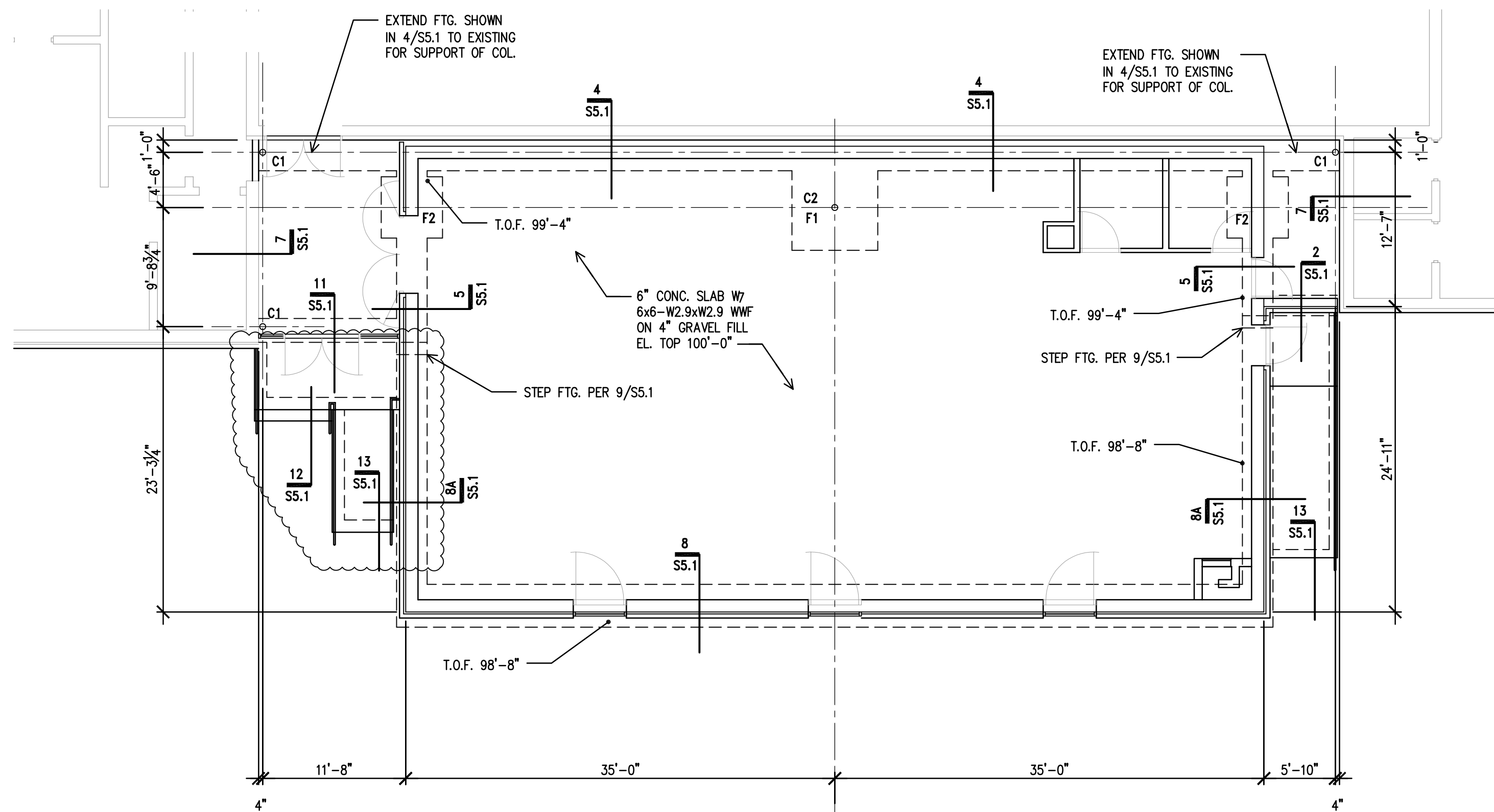
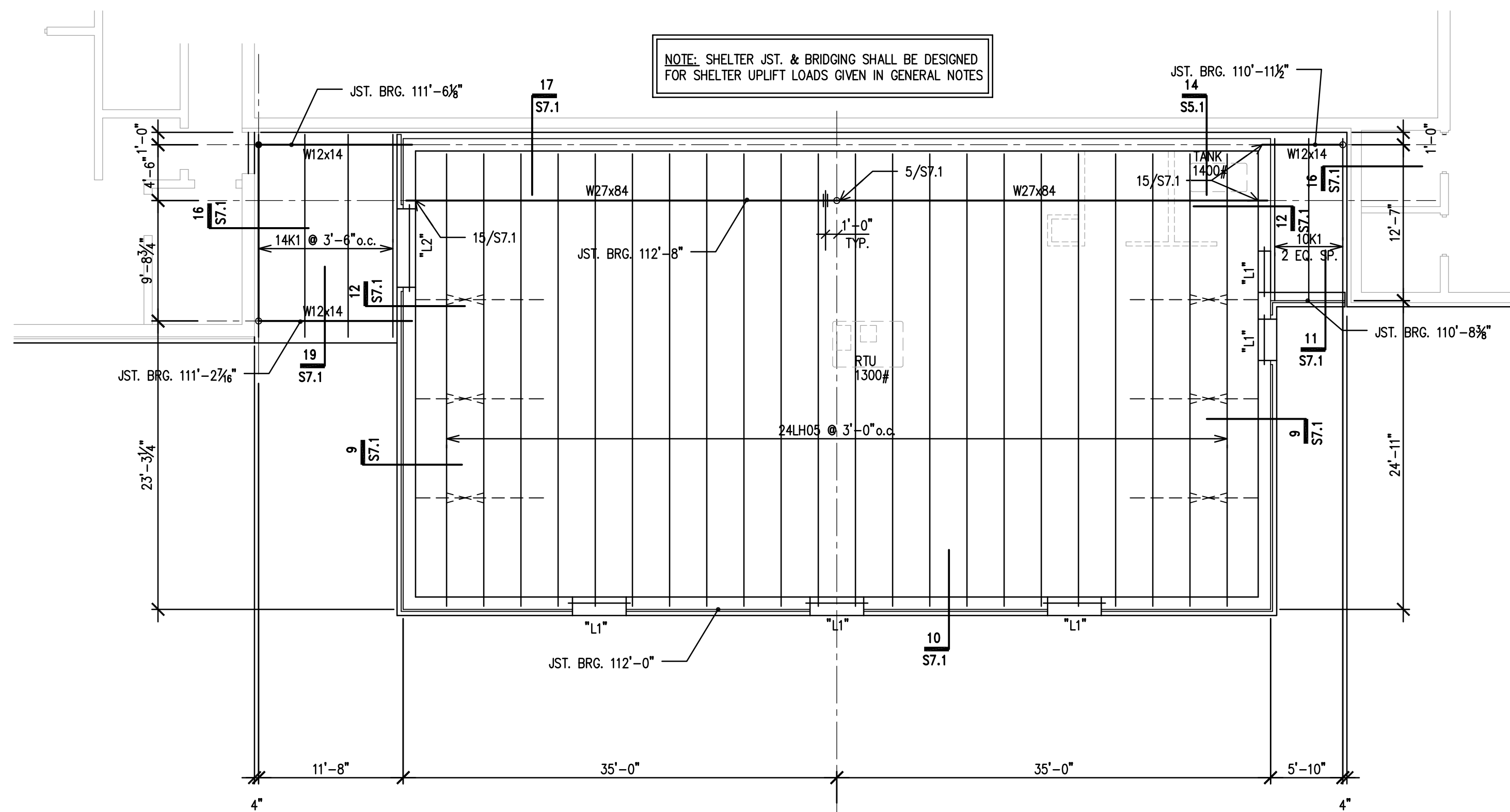


HANNEY & ASSOCIATES, ARCHITECTS
1726 South Hillside, Wichita, Kansas, 67211
Phone (316) 683-8965
Fax (316) 684-1441
www.haarchitects.com



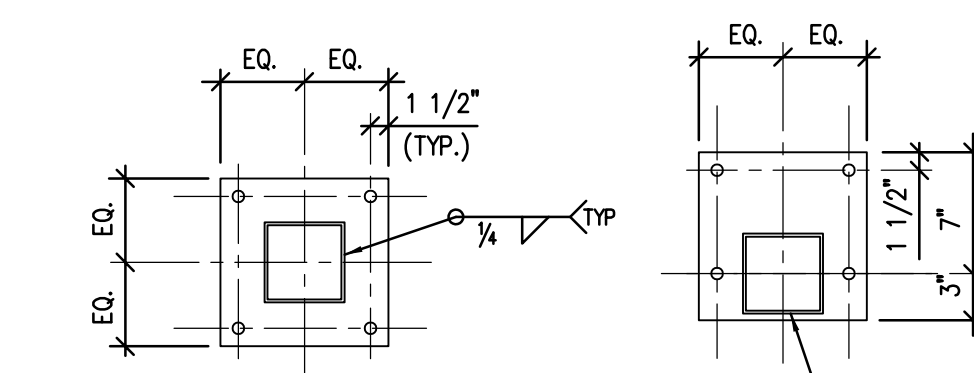
A FOUNDATION PLAN
1/8" = 1'-0"
PLAN NOTES:
1. VERIFY ALL DIMENSIONS W/ ARCH'L.



B ROOF FRAMING PLAN
1/8" = 1'-0"
PLAN NOTES:
1. VERIFY ALL DIMENSIONS W/ ARCH'L.

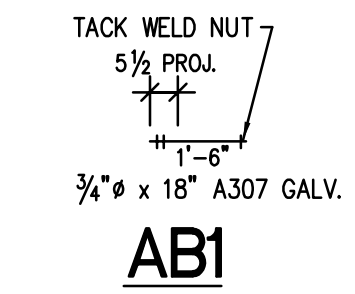
COLUMN FOOTING SCHEDULE				
MARK	EL. TOP	FOOTING SIZE	REINF. EACH WAY	REMARKS
F1	99'-4"	7'-6" x 7'-6" x 3'-6"	(8) #6 x 7'-0" T&B	---
F1	99'-4"	5'-6" x 5'-6" x 3'-6"	(6) #5 x 5'-0" T&B	---

STEEL COLUMN SCHEDULE					
MARK	COLUMN SIZE	BASE PL.	DETAIL	EL. BOT.	REMARKS
C1	HSS 3 x 3 x 1/4	3/4" x 10" x 0'-10"	BP2	99'-5"	(4) "AB1" ANCHOR BOLTS
C2	HSS 6 x 6 x 1/4	1" x 12" x 1'-0"	BP1	99'-5"	(4) "AB1" ANCHOR BOLTS



BASE PLATE "BP1"

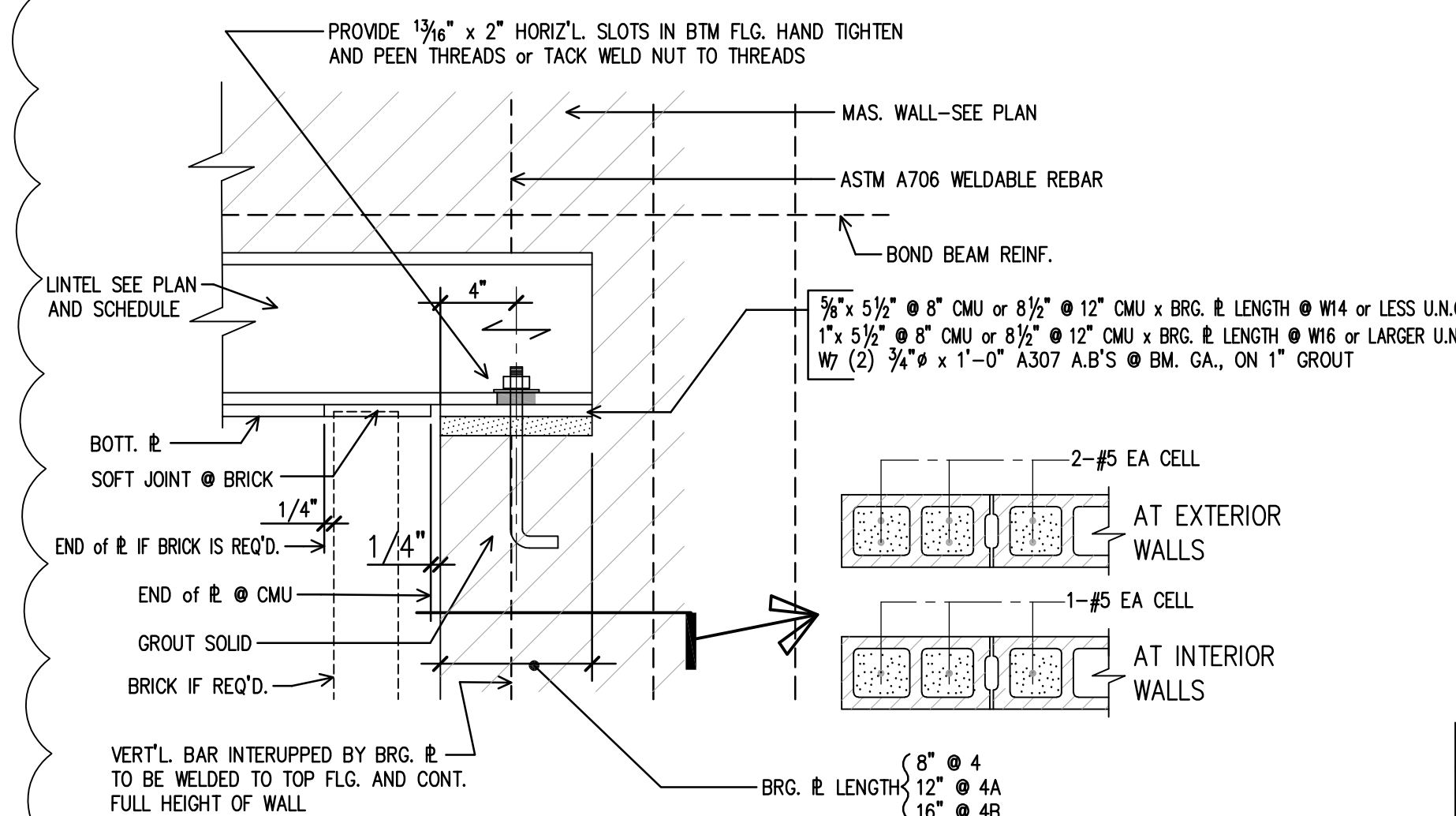
BASE PLATE "BP2"



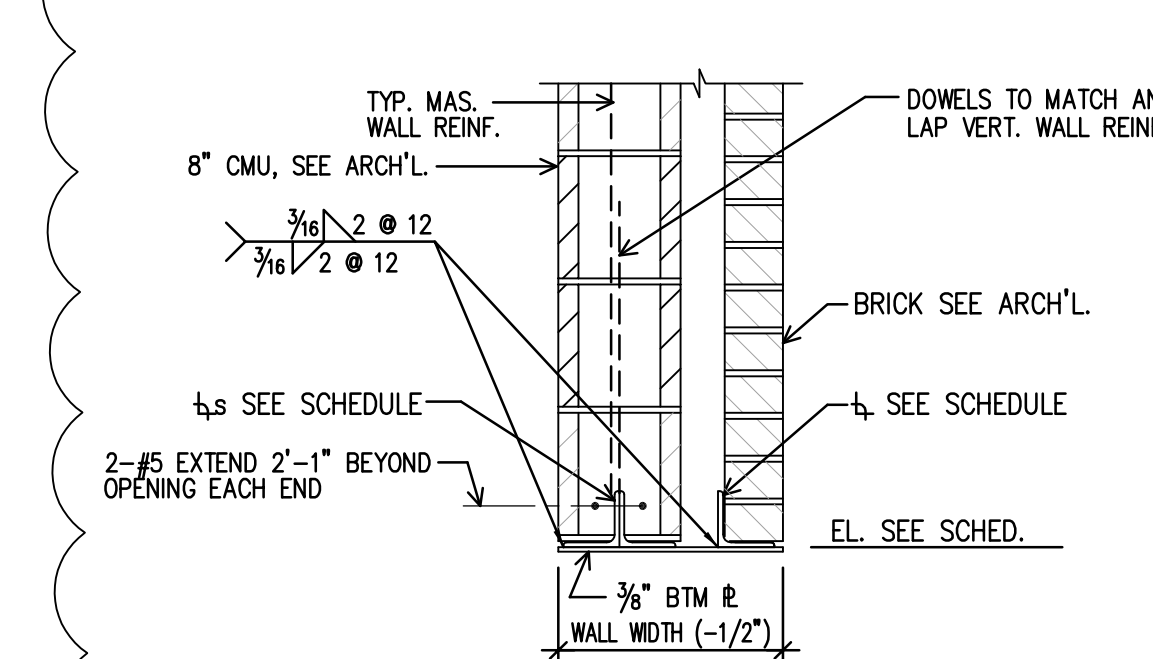
AB1

LINTEL SUPPORT SCHEDULE						
MARK	SIZE	LINTEL CROSS SECT.	SUPPORTS			REMARKS
			N/W	INTERIOR	S/E	
L1	(3) 5 x 3 1/2 x 3/16 LLV	3/S2.1	4/S2.1	---	4/S2.1	---
L2	WB x 24	2/S2.1	1/S2.1	---	1/S2.1	---

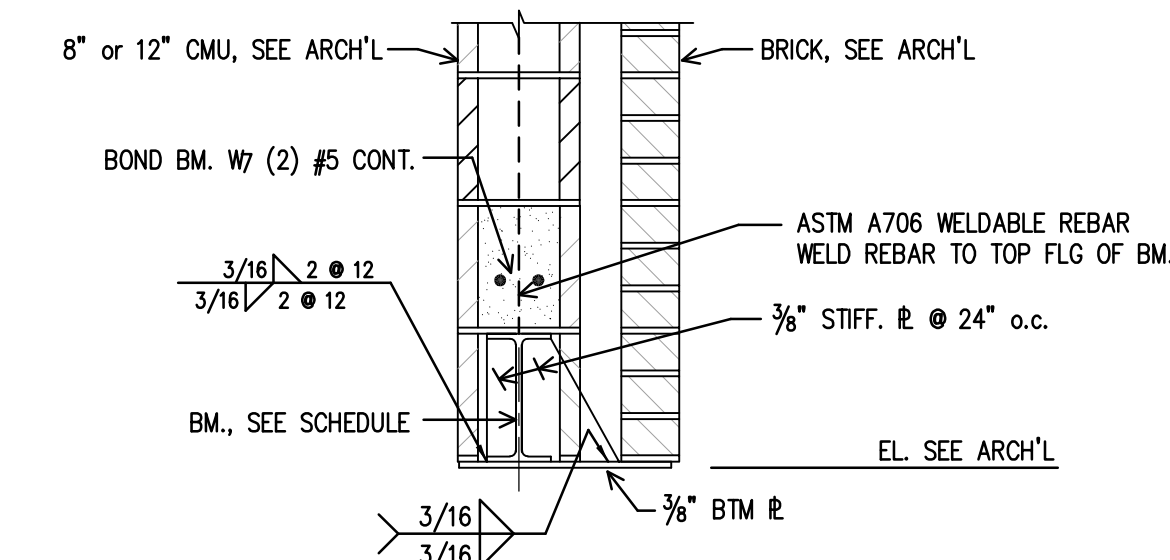
LEGEND
N/W - SUPPORT DETAIL @ NORTH OR WEST END OF LINTEL
S/E - SUPPORT DETAIL @ SOUTH OR EAST END OF LINTEL
INTERIOR - SUPPORT DETAIL @ ONE OR MORE INTERIOR SUPPORTS
MINIMUM LINTELS UNLESS OTHERWISE NOTED, SHALL BE AS FOLLOWS:
SPAN 0'-0" to 1'-8" 1/4" PLATE x WIDTH OF WALL
1'-9" to 3'-0" 3/2 x 3/2 x 3/4
3'-1" to 4'-8" 4 x 3 1/2 x 3/8 LLV
4'-9" to 6'-3" 4 x 5 x 3/2 x 3/8 LLV
6'-4" to 8'-0" 4 x 6 x 3 1/2 x 3/8 LLV
8'-1" up WB x 24 WITH 1/4" CONT. R. SEE 1 & 2/S2.1 FOR 12" CMU SIM.
NOTE: FURNISH ONE ANGLE FOR EACH 4" WIDTH OF WALL
8" MINIMUM BEARING EACH END.



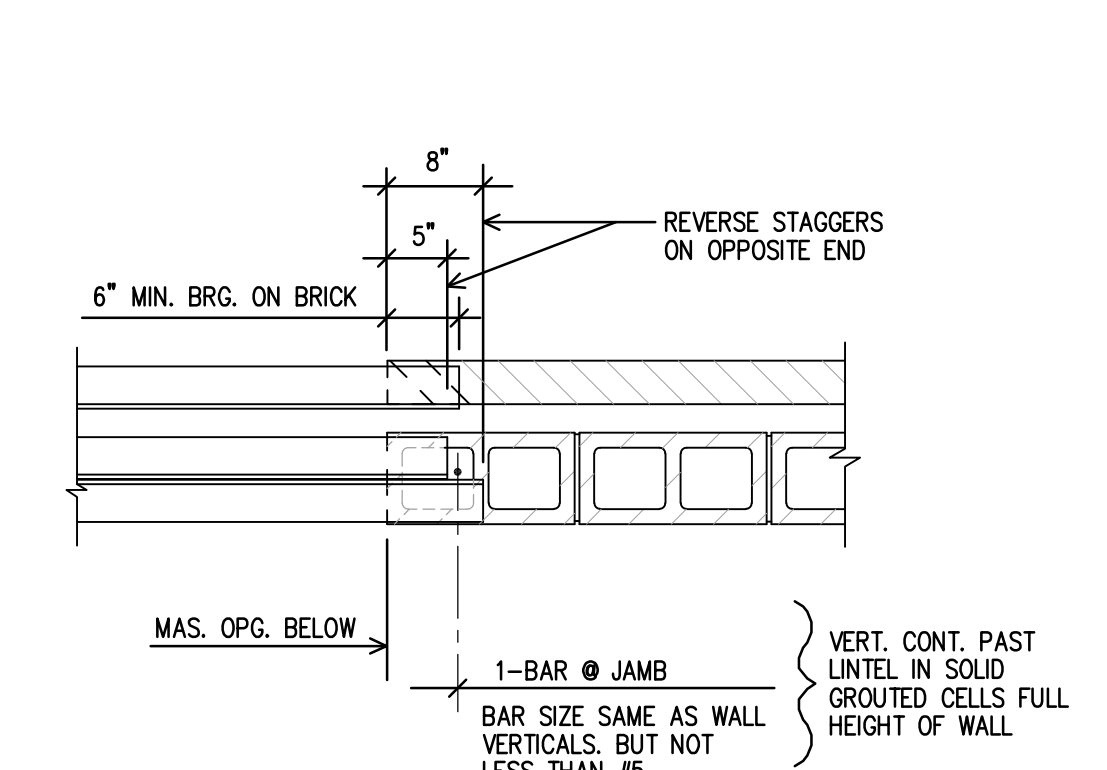
1 SECTION @ LINTEL BRG.
A as noted
B as noted
NO SCALE



3 LINTEL SECTION
NO SCALE



2 LINTEL SECTION
NO SCALE



4 LINTEL BRG. DETAIL
NO SCALE

2020
UDALL HIGH SCHOOL
FEMA SHELTER ADDITION
UNIFIED SCHOOL DISTRICT #463



DRAWINGS ISSUED		
NO.	DATE	ITEM ISSUED
0	2/15	ADDENDUM
1	2/2	ISSUED FOR BIDS
6	1/1	BOE REVIEW
5	11/24	BOE REVIEW
4	11/9	BOE REVIEW
3	10/26	REVIEW
2	10/16	REVIEW
1	10/08	REVIEW

COMPUTER DRAWING

DATE: JANUARY 2021
DRAWN BY: PS CHECKED BY: PS

SHEET

S2.1

OF 1 SHEETS

STEWART ENGINEERING CONSULTANTS, LLC
2060 INDEPENDENCE ROAD
SEDAN, KANSAS 67361
Phone 620.262.2828
EMAIL pstudies@steward.com
JOB NO. 20-131