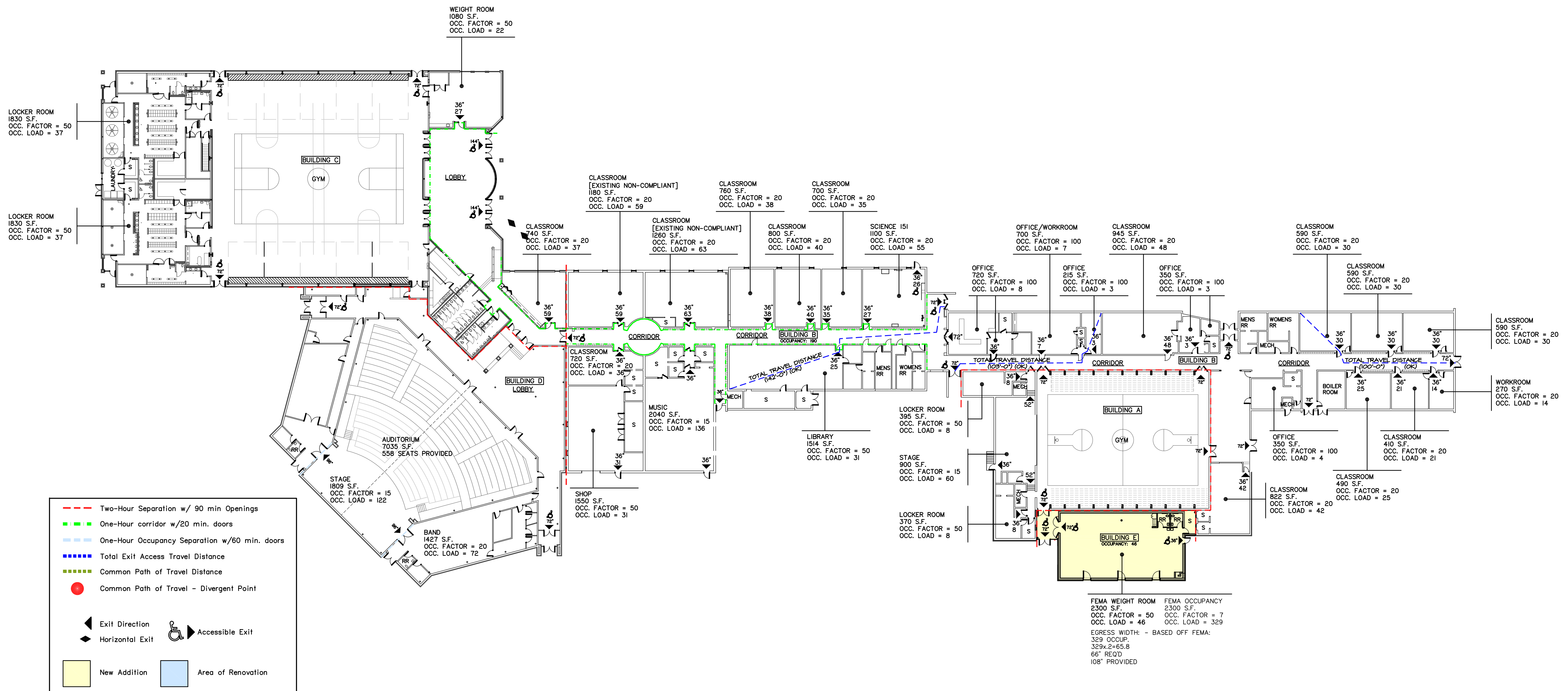




HANNEY & ASSOCIATES, ARCHITECTS
 1726 South Hillside, Wichita, Kansas, 67211
 Phone (316) 683-8865
 Fax (316) 684-1441
 www.haarchitects.com

2021
UDALL HIGH SCHOOL
FEMA SHELTER ADDITION
UNIFIED SCHOOL DISTRICT #463



DRAWINGS ISSUED		
NO.	DATE	ITEM ISSUED
1	2/26	ADDENDUM 2

COMPUTER DRAWING

DATE: OCTOBER 2020
 DRAWN BY: MH, CH
 CHECKED BY: MRH

SHEET
CODE 2
 OF 1 SHEETS

A CODE FLOOR PLAN
 SCALE: N.T.S.