

Addendum Number Three

To the Drawings and Specifications for:
FEMA SHELTER, Udall Unified School District # 463, Udall, Kansas

Issued: Friday, March 5, 2021

HANNEY & ASSOCIATES ARCHITECTS

1726 South Hillside, Wichita, Kansas

NOTICE TO BIDDERS

You are hereby instructed to include in your bids the following changes, clarification and/or corrections to the Drawings and Specifications for the **Udall High School FEMA Shelter Addition**.

The additions and/or corrections shall be considered as a part of the Contract Documents as if incorporated therein. Where the following corrections and/or additions vary from the conditions of the Drawings and Specifications, such following changes or additions shall govern.

I. GENERAL CLARIFICATIONS

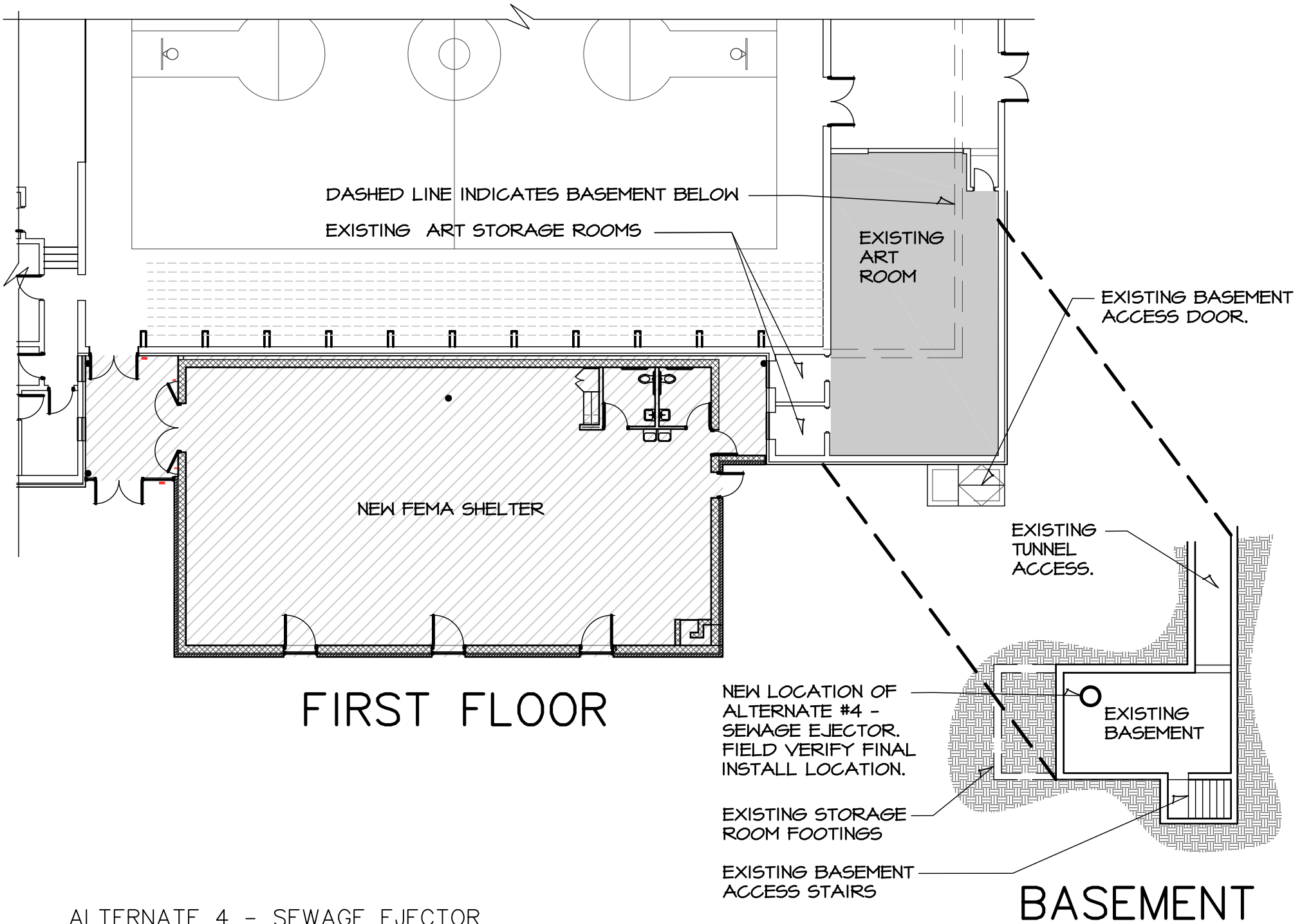
- 1.1 Bid Date:
The Bid Date is unchanged and remains **Monday, March 8, 2021, up to and until 2 p.m.** The time and location to receive the bids remains unchanged.
- 1.2 The base bid for subgrade conditions and prep are to be based off moist subgrade conditions per Geotech Report provided in the specifications.
- 1.3 **Alternate Four** – Sewage Ejector
The new sewage ejector is to be located below the existing Art room to the East of the new addition. See attached drawing “A” being issued with this drawing.

II. CHANGES TO THE SPECIFICATIONS

- 2.1 Section 01030 – Alternates, Alternate # 9 – Tuck Pointing
Alternate #9 has been added to this bid package. This alternate shall include a unit price per 50 square feet of solid masonry tuck pointing. Refer to attached drawing “B” being issued with this Addendum. The revised section can be downloaded from our website: www.haarchitects.com; then click the “Shortcut to Plan Room” link.

- 2.2 Section 01030 – Alternates, Alternate # 6, shall be changed to read:
ALTERNATE NUMBER SIX: Gas Line Relocation
This alternate considers that General Contractor shall recommend a dollar amount for a cash allowance in the Base Bid, for the General Contractor to remove the existing gas line, and provide, reroute as required and install a new gas line. Any unused amount will be credited back to the Owner at the completion of the project and before final payment is made. Refer to Drawings.
The revised section can be downloaded from our website:
www.haarchitects.com; then click the “Shortcut to Plan Room” link.
- 2.3 Section 00150 - Bid Form
The Bid Form has been revised to include the new Alternate 9 and to list Alternate 6 as an allowance.
The revised Bid Form can be downloaded from our website:
www.haarchitects.com; then click the “Shortcut to Plan Room” link.
- 2.4 Section 04531 – Masonry Tuck Pointing
This section has been issued as a part of Addendum 3.
The section can be downloaded from our website:
www.haarchitects.com; then click the “Shortcut to Plan Room” link.

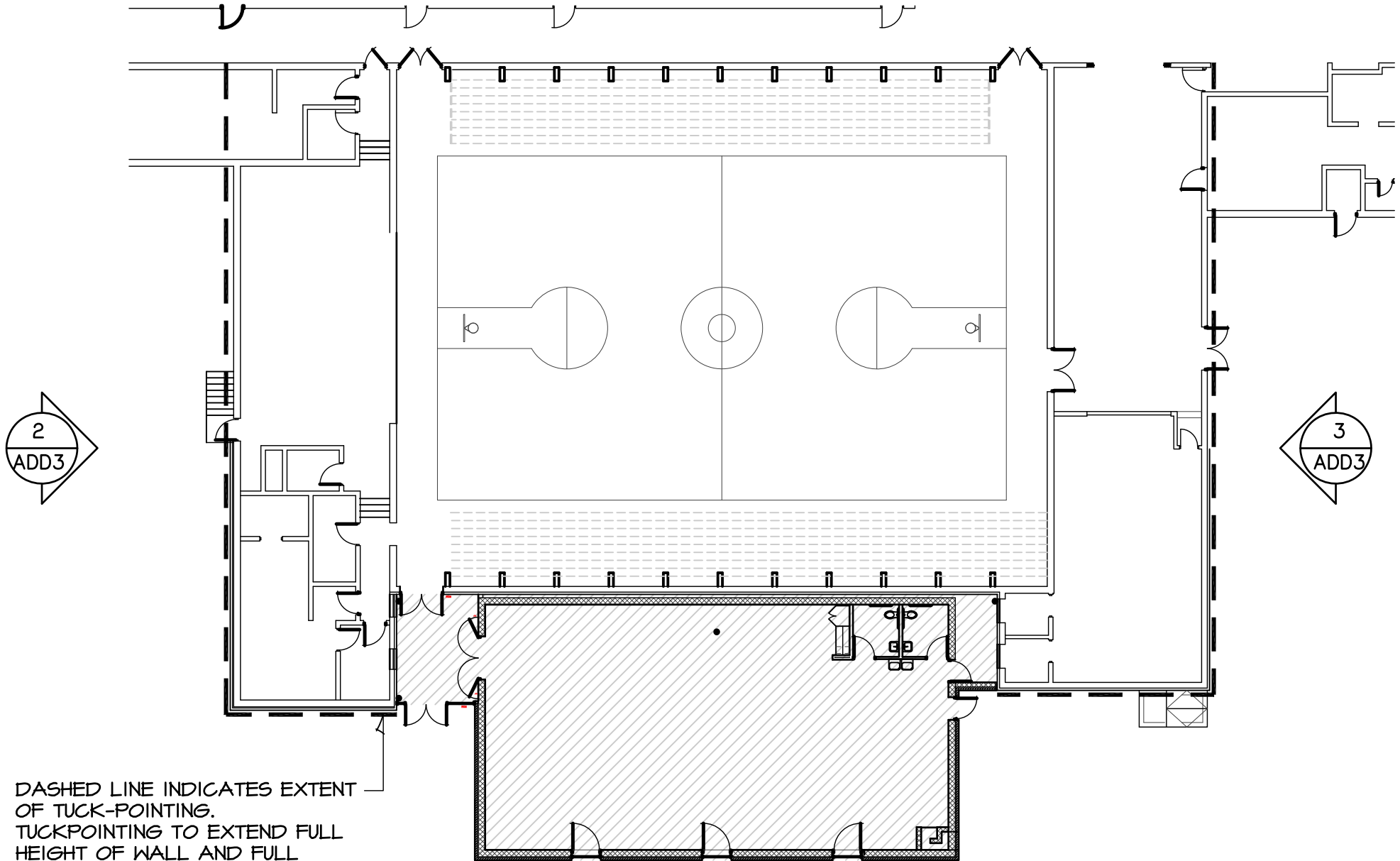
End of Addendum Three



ALTERNATE 4 - SEWAGE EJECTOR

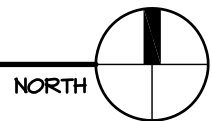
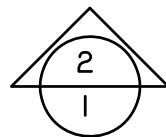
A PARTIAL FLOOR PLAN

SCALE: N.T.S.

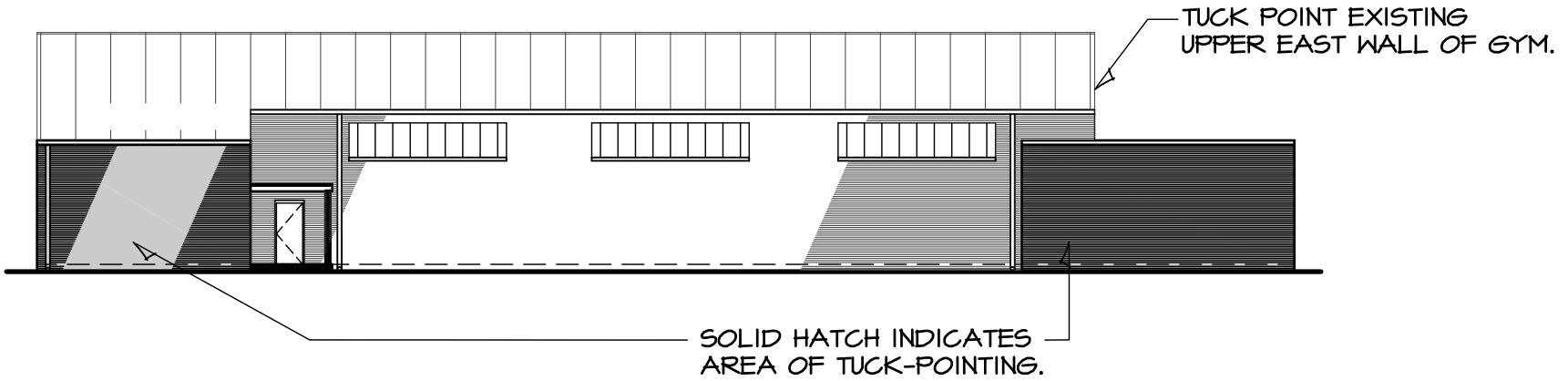


DASHED LINE INDICATES EXTENT OF TUCK-POINTING. TUCKPOINTING TO EXTEND FULL HEIGHT OF WALL AND FULL LENGTH OF WALL.

ALTERNATE 9 - TUCK POINTING
B PARTIAL FLOOR PLAN
 SCALE: N.T.S.



RIDGE
 EL. 126'-2" +/-
 EAVE
 EL. 114'-2" +/-
 GRADE
 EL. 99'-2" +/-



ALTERNATE 9 - TUCK POINTING
1 SOUTH ELEVATION
 SCALE: N.T.S.



TUCK-POINTING TO EXTEND FULL HEIGHT OF WALL AND FULL LENGTH OF WALL.

TUCK POINT EXISTING UPPER EAST WALL OF GYM.

REMOVE EXISTING CAULKING AND RE-CAULK ALL PENETRATIONS & OPENINGS IN MASONRY.



ALTERNATE 9 - TUCK POINTING
2 WEST ELEVATION
 SCALE: N.T.S.

ALTERNATE 9 - TUCK POINTING
3 EAST ELEVATION
 SCALE: N.T.S.