

## MATERIAL GENERAL NOTES

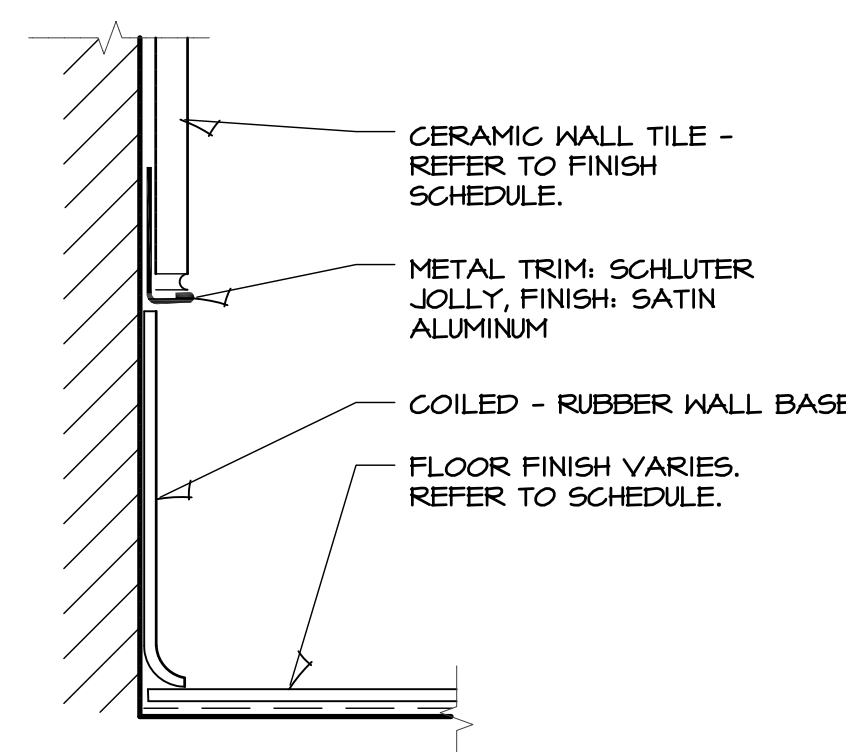
INTERIORS	
ID #	GENERAL NOTE
GN (INT) #1	ALL WORK IS TO BE IN ACCORDANCE WITH OXFORD, KS BUILDING CODES AND ALL OTHER CODES WHICH MAY HAVE AUTHORITY OVER THIS PROJECT. PROVIDE ALL NECESSARY SAFEGUARDS, BARRIERS, TEMPORARY POWER, LIGHTING, FIRE PROTECTION, ETC AS REQUIRED DURING CONSTRUCTION.
#2	G.C. TO PROVIDE AND INSTALL MATERIALS PER MANUFACTURER'S RECOMMENDATION. PROVIDE ACCESSORIES, TRIM COMPONENTS, ETC REQUIRED FOR COMPLETE INSTALLATION OF SPECIFIED MATERIAL.
#3	REFER TO PLANS, ELEVATIONS, SECTIONS AND SPECIFICATIONS FOR ADDITIONAL MATERIALS, EXTENT OF FINISH AND ADDITIONAL INFO. CONFLICTING NOTES TO BE BROUGHT TO ARCHITECT FOR REVIEW AND FINAL DECISION.
#4	FLOOR, WALL, CEILING, OPEN AREAS BENEATH/BEHIND EQUIPMENT, CABINETS, AND MILLWORK, INSTALLER TO EXTEND NEW FINISH TO COVER OPEN AREA (APPLIES TO VIEWABLE AREAS ONLY, UNLESS NOTED OTHERWISE)
#5	COLORS NOTED ARE FOR BIDDING PURPOSES ONLY. FINAL COLOR SELECTIONS BY ARCHITECT PRIOR TO ORDERING MATERIALS.
#6	PROVIDE A SUBMITTAL SCHEDULE ALLOWING FOR LONG LEAD TIME ITEMS TO PREVENT SUBSTITUTIONS.
#7	INTERIOR WALL AND CEILING FINISH MATERIALS SHALL BE CLASSIFIED IN ACCORDANCE WITH NFPA 286 AND COMPLY WITH SECTION 803.1.1.1. MATERIALS COMPLYING WITH SECTION 803.1.1.1 SHALL BE CONSIDERED TO ALSO COMPLY WITH THE REQUIREMENTS OF CLASS A. INTERIOR WALL AND CEILING FINISH MATERIALS TESTED IN ACCORDANCE WITH ASTM E84 OR UL T23. SHALL BE ACCORDANCE WITH DEFINITIONS IDENTIFIED ON 803.1.2 CLASS A, CLASS B AND CLASS C. TABLE 803.1.3. GROUP 'E' NON SPRINKLED ROOMS: CLASS C, REFERENCE NOTE C ON TABLE FOR ADDITIONAL REQUIREMENTS.
FLOORING	
ID #	GENERAL NOTE
GN (FLR) #1	PROVIDE SHOP DRAWING LAYOUT SHOWING FLOOR PATTERN: INCLUDE EXPANSION JOINTS, SANGUIT JOINT, TRANSITIONS, RAMPS, ETC.
#1	RUBBER COVE BASE ON ALL BUILT-IN BASE CABINETS, EXPOSED STRUCT COLUMNS, ETC. G.C. TO PROVIDE AND INSTALL CABINET BASE. FRAMEWORK HEIGHT SHALL BE 4" HEIGHT. COORDINATE LENGTH AND WIDTH WITH MILLWORK CONTRACTOR.
#2	WHERE SPECIFIED PROVIDE CONTINUOUS LENGTH OF RUBBER BASE WITH FIELD FORMED CORNERS. SEE GENERAL NOTE: GN (WALL) #7.
BASE	
ID #	GENERAL NOTE
#1	RUBBER COVE BASE ON ALL BUILT-IN BASE CABINETS, EXPOSED STRUCT COLUMNS, ETC. G.C. TO PROVIDE AND INSTALL CABINET BASE. FRAMEWORK HEIGHT SHALL BE 4" HEIGHT. COORDINATE LENGTH AND WIDTH WITH MILLWORK CONTRACTOR.
#2	WHERE SPECIFIED PROVIDE CONTINUOUS LENGTH OF RUBBER BASE WITH FIELD FORMED CORNERS. SEE GENERAL NOTE: GN (WALL) #7.
WALL	
ID #	GENERAL NOTE
GN (WALL) #1	COORDINATE PRE-INSTALLATION MEETING FOR PATTERNED WALL TILE. PROVIDE SHOP DRAWINGS TO CONFIRM TILE LAYOUT BEFORE INSTALLATION.
#2	INTERIOR H.M. FRAMES AND DOORS; PAINT. COLOR VARIES. EXTERIOR H.M. DOORS AND FRAMES; PAINT. COLOR VARIES. PAINT COLORS TO BE SELECTED ON SHOP DRAWINGS BY ARCHITECT.
#3	G.C. TO PAINT EXPOSED SIDE OF G.M.B. AT NEW CONSTRUCTION, UNLESS OTHERWISE NOTED. PROVIDE A SMOOTH LEVEL 4 DRYWALL FINISH ON ALL GYPSUM WALLS AND CEILING SOFFITS, ETC. UNLESS OTHERWISE NOTED. LEVEL 4 IS PER CURRENT VERSION OF RECOMMENDED LEVELS OF GYPSUM BOARD FINISH ACCESSED ON THE GYPSUM ASSOCIATION WEBSITE. 0A-214-15
#4	GENERAL CONTRACTOR AND WALL FINISH CONTRACTOR SHALL COORDINATE INSTALL OF FINISH MATERIALS. G.C. SHALL INSURE THE SURFACE CONDITION WILL NOT ADVERSELY AFFECT THE INSTALLATION OF THE WALL FINISH.
#5	ALL ELECTRICAL RECEPTACLES/SWITCHES LOCATED WITHIN AREAS SCHEDULED TO RECEIVE NEW FINISHES, NEW AND EXISTING. PROVIDE STAINLESS STEEL METAL PLATES.
#6	PAINTED WALLS RECEIVE A TINTED PRIMER THAT COORDINATES WITH FINISH COLOR.
#7	CMU SCHEDULED TO RECEIVE TILE OR RUBBER WALL BASE. ADDITIONAL PREP REQUIRED AT CMU JOINT AND CMU TEXTURE FROM TELEGRAPHING THROUGH. ELIMINATE VOIDS WHERE CMU JOINTS OCCUR, INFILL WITH PAINTABLE SEALANT TO CONCEAL CMU JOINT WHERE VISIBLE AT EXPOSED EDGE OF TILE. TILE CONTRACTOR AND GENERAL CONTRACTOR SHALL COORDINATE INSTALLATION OF TILEWORK AND FINISHED CMU WALLS. RUBBER WALL BASE SHALL BE INSTALLED UNIFORM, LEVEL & SMOOTH.
CEILING	
ID #	GENERAL NOTE
GN (CLG) #1	CENTER CEILING GRID AND TILE LAYOUT IN EACH ROOM UNLESS OTHERWISE NOTED. DO NOT INSTALL LESS THAN 1/2" CLG TILE.
#2	REFER TO REFLECTED CEILING PLANS AND A2.4 FOR ADDITIONAL SOFFIT AND CEILING DETAILS.
MISCELLANEOUS	
ID #	GENERAL NOTE
GN (MISC) #1	OWNER RESPONSIBLE FOR MOVING AND INSTALLING WALL MOUNTED EQUIPMENT (MARKERBOARDS & MIRRORS)
#2	ROOM SIGNS ARE PROVIDED BY & INSTALLED BY GENERAL CONTRACTOR UNLESS OTHERWISE NOTED. ADA COMPLIANT.
#3	PAINT GRILLS, WALL DIFFUSERS, ELECTRICAL PANELS, WALL MOUNTED BOXES, ACCESS PANELS, ETC., WHICH ARE EXPOSED IN FINISHED SPACES TO MATCH THE SURFACE ON WHICH THEY OCCUR.
#4	PROVIDE FLOOR MATERIAL TRANSITION ACCESSORIES WHERE FLOOR FINISH MATERIALS OF VARYING HEIGHT ADJOIN, INCLUDING THRESHOLDS, ADAPTORS, TRANSITIONS AND REDUCERS. ALL ACCESSORIES ARE TO BE RUBBER AS MANUFACTURED BY ROPPE OR ALUMINUM AS MANUFACTURED BY SCHLUTER.

## FINISH MATERIAL LEGEND

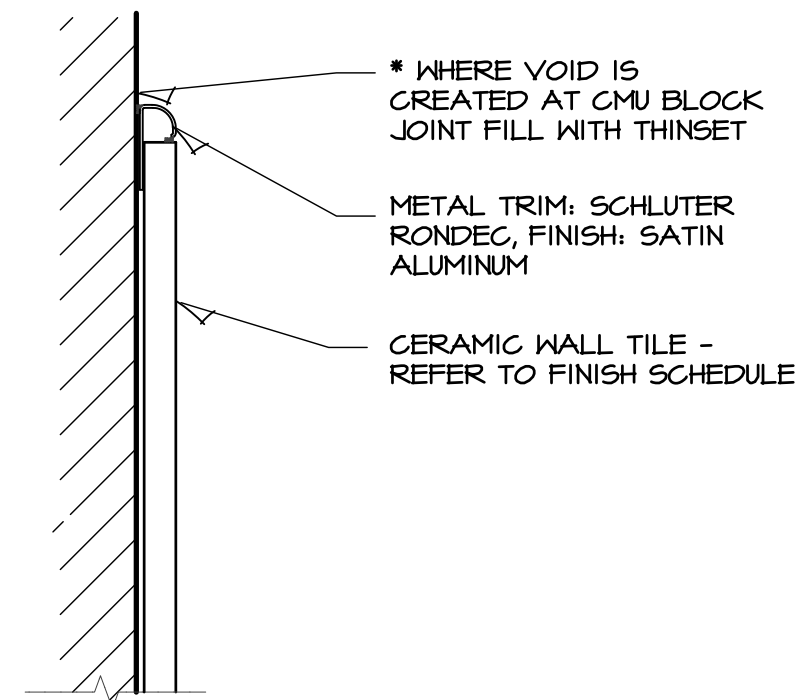
FLOOR MATERIAL										SETTING MATERIALS, UNDERLAYMENTS, MEMBRANE, SEALERS				
ID #	MATERIAL	MANUFACTURER	PRODUCT	COLOR	DIMENSION	APPLICATION	TRIM	ADDL INFORMATION		ID #	MANUFACTURER	PRODUCT	ADDITIONAL INFO	
F1	SEALED CONCRETE	SEAL-KRETE	DURA-SHELL WB	CLEAR	(FULL COVERAGE)	3 COATS		1. RESTROOM AND ENTRY ADD NON SLIP ADDITIVE, TEXTURE APPROVED BY OWNER PRIOR TO INSTALLATION. 2. SEAL SAW CUT JOINTS, SEE PATTERN: A/AB.2		SM-1	NOT USED	-	-	
F2	RECYCLED RUBBER- ALT 3	EARTH SAVER/ ES	RUBBERFLEX IMPACT	RFX-504 RED ECLIPSE	48" W x 9MM- ROLL		T-8	1. INSTALL TRANSITION STRIPS @ ALL LOCATIONS INDICATED. 2. FLOOR PATTERN : B/AB.2		SM-2	ADHESIVE	HEAVY DUTY	MANUF'S RECOMMENDED, FULL COVERAGE	
										SM-3	SETTING MATERIALS	REF TO SPEC	INCLUDE PROTECTION & SEALERS REFER TO GROUTS LISTED BELOW	
WALL BASE MATERIAL										GROUT				
ID #	MATERIAL	MANUFACTURER	PRODUCT	COLOR	DIMENSION	SETTING	MTL TRIM	ADDL INFORMATION		ID #	MANUFACTURER	PRODUCT	COLOR	LOCATION
B1	RUBBER WALL BASE	ROPPE	PINNACLE, STAND. COVE	100 BLACK	4" X 1/8"	SM-2	-	SPECIAL NOTE TO INSTALLER: PROVISIONS REQUIRED FOR A SMOOTH INSTALL. ADDITIONAL PREP AT CMU WALL PRIOR TO INSTALL. CONCEAL JOINT WITH PAINTABLE SEALANT.		G-1	BOSTIC	EZ-POXY	NEUTRAL, TBD	RESTROOM WALLS
B2	NOT USED									G-2	BOSTIC	TRU COLOR	NEUTRAL, TBD	DRINKING FOUNTAIN & VEST
										G-3	BOSTIC	SANDED	NEUTRAL, TBD	ALT 2- WINDOW SILL
WALL MATERIAL										TRIMS				
ID #	MATERIAL	MANUFACTURER	PRODUCT	COLOR	COATS/ DIMENSION	SETTING	MTL TRIM	ADDL INFORMATION		ID #	MANUFACTURER	PRODUCT	COLOR	
W1	WATER BASED EPOXY PAINT	SHERWIN WILLIAMS	PRE CAT WAT BASE EPOXY	T.B.D.	(1) PRIMER + (2) COATS	ADDITIONAL	-	LOW SHEEN		T-1	NOT USED			
W2	LATEX PAINT	SHERWIN WILLIAMS	PROMAR 200 PRM & ZERO	T.B.D.	(1) PRIMER + (2) COATS	PREP ON CMU, REF TO SPEC	-	SATIN SHEEN, FINISH LEVEL 4, GA-214-15		T-2	NOT USED			
W2a	LATEX PAINT	SHERWIN WILLIAMS	PROMAR 200 PRM & ZERO	T.B.D.	(1) PRIMER + (2) COATS	REF TO SPEC	-	SATIN SHEEN, FINISH LEVEL 4, GA-214-15		T-3	NOT USED			
W3	ENAMEL PAINT-DOOR FRAMES	BENJAMIN MOORE	IRONCLAD QUOX DRY ND ENAMEL	COLOR: CUSTOM MATCH	(1) MTL PRIMER + (2) COATS	REF TO SPEC	-	SEMI-GLOSS SHEEN, FINISH LEVEL 4, GA-214-15		T-4	SCHLUTER	JOLLY		SATIN ALUMINUM-LOCATE ON EXPOSED EDGES
W4	CERAMIC WALL TILE	DAL-TILE	COLOR WHEEL	WHITE OI/O, DESERT GRAY XII4, BLACK XII4	4" X 12" SHIT, CURRANT	SM-3	T-4, T-5	1. REF TO ELEVATIONS FOR PATTERN - A6.1 2. ENLARGED DETAILS THIS SHEET. 3. RESTROOM EPOXY GROUT		T-5	SCHLUTER	RONDEC		SATIN ALUMINUM- LOCATE ON EXP. EDGES
CEILING FINISH MATERIALS										DOOR STAIN, AND WOOD TRIM:				
ID #	MATERIAL	MANUFACTURER	PRODUCT	COLOR	DIMENSION	SETTING	MTL TRIM	ADDL INFORMATION		ID #	MANUFACTURER	PRODUCT	COLOR	LOCATION
C1	ACOUSTICAL TILE	ROCKFON, CLASS A	ARTIC. STONE WOOL	WHITE	24" x 24" x 5/8"	SQ EDGE	-	CI (A): 24 X 48 WITH 15/16" GRID. NRC: .75		ST-1	SHERWIN WILLIAMS	SEE SPEC	CUSTOM	NEW RESTROOMS
C5	LATEX PAINT (ON GYPSUM)	SHERWIN WILLIAMS	PROMAR 200 PRM & ZERO	WHITE, VERIFY COLOR NO.	(1) PRIMER + (2) COATS		-	SATIN SHEEN, FINISH LEVEL 4, GA-215-15		W3	BENJAMIN MOORE	SEE WALL MATERIALS	T.B.D.	NEW ADDITION
C6	LATEX PAINT (ON ACRYL-N)	SHERWIN WILLIAMS	PROMAR 200 PRM & ZERO	WHITE, VERIFY COLOR NO.	(1) PRIMER + (2) COATS		-	SATIN SHEEN, FINISH LEVEL 4, GA-215-15						
C6a	ACRYLIC PAINT (ON MILSTRUCT)	SHERWIN WILLIAMS	DRYFALL	WHITE	REF TO SPEC									
C6b	ACRYLIC PAINT (ON MILSTRUCT)	SHERWIN WILLIAMS	DRYFALL	BLACK	REF TO SPEC									
MILLWORK MATERIALS										SPECIAL PROVISIONS REQUIRED: ALL WOOD SHALL MATCH EXISTING WOOD				
ID #	MATERIAL	MANUFACTURER	PRODUCT	COLOR	DIMENSION	SETTING	EDGE	ADDL INFORMATION		ID #	MANUFACTURER	PRODUCT	COLOR	LOCATION
M1	LAMINATE COUNTER/SPLASH LAMINATE CABINET	FORMICA	HORIZONTAL POSTFORMING	T.B.D.	VARIES	SM-2	SELF EDGE	EDGE: 1 1/2" W. BACKSPLASH: 3/4" EDGE						
M2	NOT USED					SM-2	3MM PVC EDGE	INT: THERMOFUSED MELAMINE: WHITE						
WINDOW SILL MATERIALS														
ID #	MATERIAL	MANUFACTURER	PRODUCT	COLOR	DIMENSION	SETTING	MTL TRIM	ADDL INFORMATION		ID #	MANUFACTURER	PRODUCT	COLOR	LOCATION
WS1	QUARRY TILE- ALT 2	DAL-TILE	QUARRY TEXTURES	ASHEN GRAY OT03	8"x8"x1/2"	SM-3	T-7	1.MTL TRIM CONCEALS JOINT BETWEEN WALL AND BOTTOM OF QUARRY TILE. 2. INCLUDE BACKER ROD AT JOINT BETWEEN TILE AND WINDOW FRAME.						

## FEMA ADDITION FINISH SCHEDULE

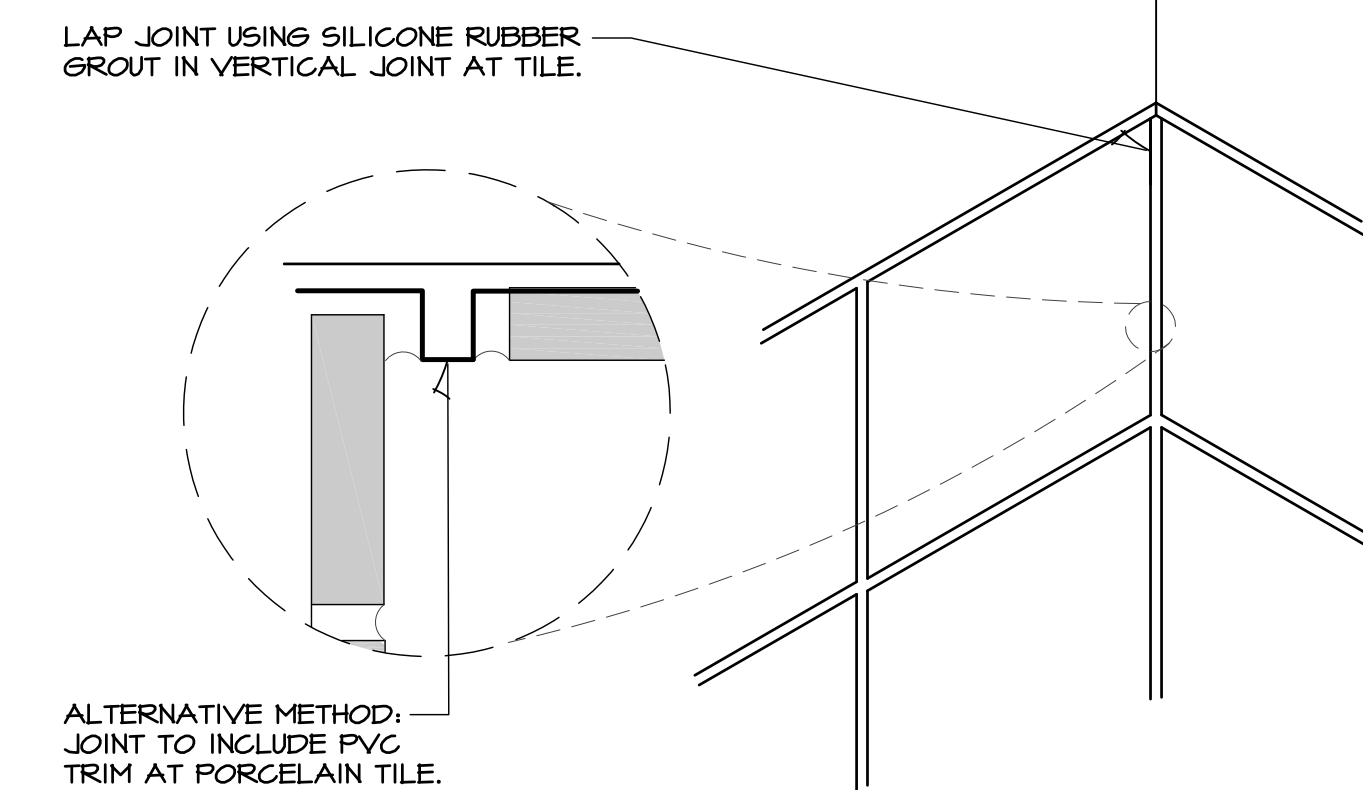
FIRST FLOOR	ROOM #	FLOOR	BASE	WALLS: DTL/SH				CEILING	MILLWORK	WINDOW	FINISH
ROOM NAME		DTL/SH	DTL/SH	NORTH	SOUTH	WEST	EAST	MATL	HEIGHT	SILL	NOTE
VESTIBULE	100	F1	B1	EXIST	-	EXIST.	W4/B1	CI	10'-0"	-	PATCH AND REPAIR EXISTING WALLS
WEIGHT ROOM- BASE BID	101	F1	B1	W2a	W2	W2	W2	C6a	VARIES	MI	ALT 2- WSI TILE @ DRINKING FOUNTAINS. REF TA/A6.1
WEIGHT ROOM - ALTERNATE 3	101	F2	B2 DETAIL "4"	W2a	W2	W2	W2	C6a	VARIES	MI	ALTERNATE #3 - SPORTS RUBBER FLOORING REF. B/AB.2
RESTROOM	102	F1	B1	W2/W4	W2/W4	W2/W4	W2/W4	CI	8'-0"	-	-
RESTROOM	103	F1	B1	W2/W4	W2/W4	W2/W4	W2/W4	CI	8'-0"	-	-
STORAGE	104	F1	B1	W2	W2	W2	W2	C6a	VARIES	-	-



1 WALL TILE - RUBBER BASE  
SCALE: N.T.S.



2 WALL TILE - T.O. WAINSCOT  
SCALE: N.T.S.



3 WALL TILE - TYPICAL DETAIL  
SCALE: N.T.S.



HANNEY & ASSOCIATES, ARCHITECTS  
1726 South Hillside, Wichita, Kansas, 67211  
Phone (316) 883-8985  
Fax (316) 884-1441  
www.haarchitects.com

2021  
UDALL HIGH SCHOOL  
FEMA SHELTER ADDITION  
UNIFIED SCHOOL DISTRICT #463



DRAWINGS ISSUED		
NO.	DATE	ITEM ISSUED
8	2/18	ADDENDUM 1
7	1/25	ISSUED FOR BIDS
6	1/11	BOE REVIEW
5	11/24	BOE REVIEW
4	11/9	BOE REVIEW
3	10/26	REVIEW
2	10/16	REVIEW
1	10/08	REVIEW

COMPUTER DRAWING

DATE: OCTOBER 2020  
DRAWN BY: MH, CH  
CHECKED BY: MRH

SHEET

A8.1

OF 1 SHEETS