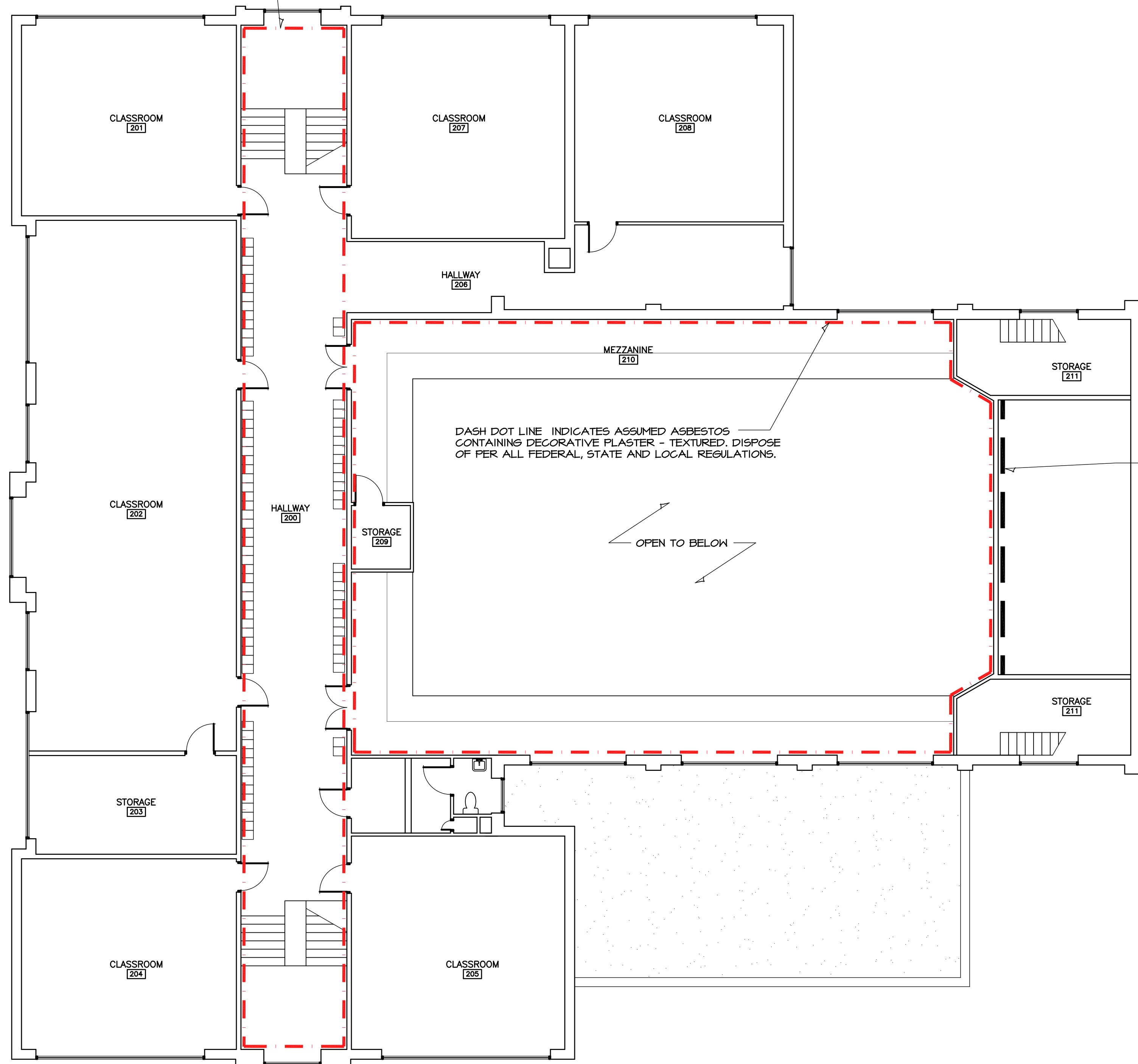


HANNEY & ASSOCIATES, ARCHITECTS
 1726 South Hillside, Wichita, Kansas, 67211
 Phone (316) 883-8965
 Fax (316) 884-1441
 www.haarchitects.com

DASH DOT LINE INDICATES ASSUMED ASBESTOS CONTAINING DECORATIVE PLASTER - TEXTURED. DISPOSE OF PER ALL FEDERAL, STATE AND LOCAL REGULATIONS.



DASH DOT LINE INDICATES ASSUMED ASBESTOS CONTAINING DECORATIVE PLASTER - TEXTURED. DISPOSE OF PER ALL FEDERAL, STATE AND LOCAL REGULATIONS.

DASHED LINE INDICATES LOCATION OF ASBESTOS CONTAINING STAGE CURTAIN. DISPOSE OF PER ALL FEDERAL, STATE AND LOCAL REGULATIONS.

DEMO OF EXISTING BUILDING IS TO REMOVE ALL FOOTINGS AND SUB-SURFACE MATERIALS RELATED TO THE CONSTRUCTION OF THIS BUILDING.

ALL ASBESTOS CONTAINING MATERIALS (BOTH KNOWN AND ASSUMED) LOCATIONS INDICATED ON THIS PLAN ARE BASED OFF THE ASBESTOS MANAGEMENT PLAN. REFER TO SPECIFICATIONS.

DEMO SCOPE
A SECOND FLOOR PLAN
 SCALE: 1/8" = 1'-0"



2021
5-6 BUILDING DEMO
UNIFIED SCHOOL DISTRICT 358
 -, Oxford, Kansas 67119

DRAWINGS ISSUED		
NO.	DATE	ITEM ISSUED
3	3/15/21	BIDS
2	3/1/21	REVIEW
1	2/8/21	REVIEW

COMPUTER DRAWING

DATE: FEBRUARY, 2021
 DRAWN BY: MH, CH, MB, JC
 CHECKED BY: MRH

SHEET
D1.2
 OF 1 SHEETS