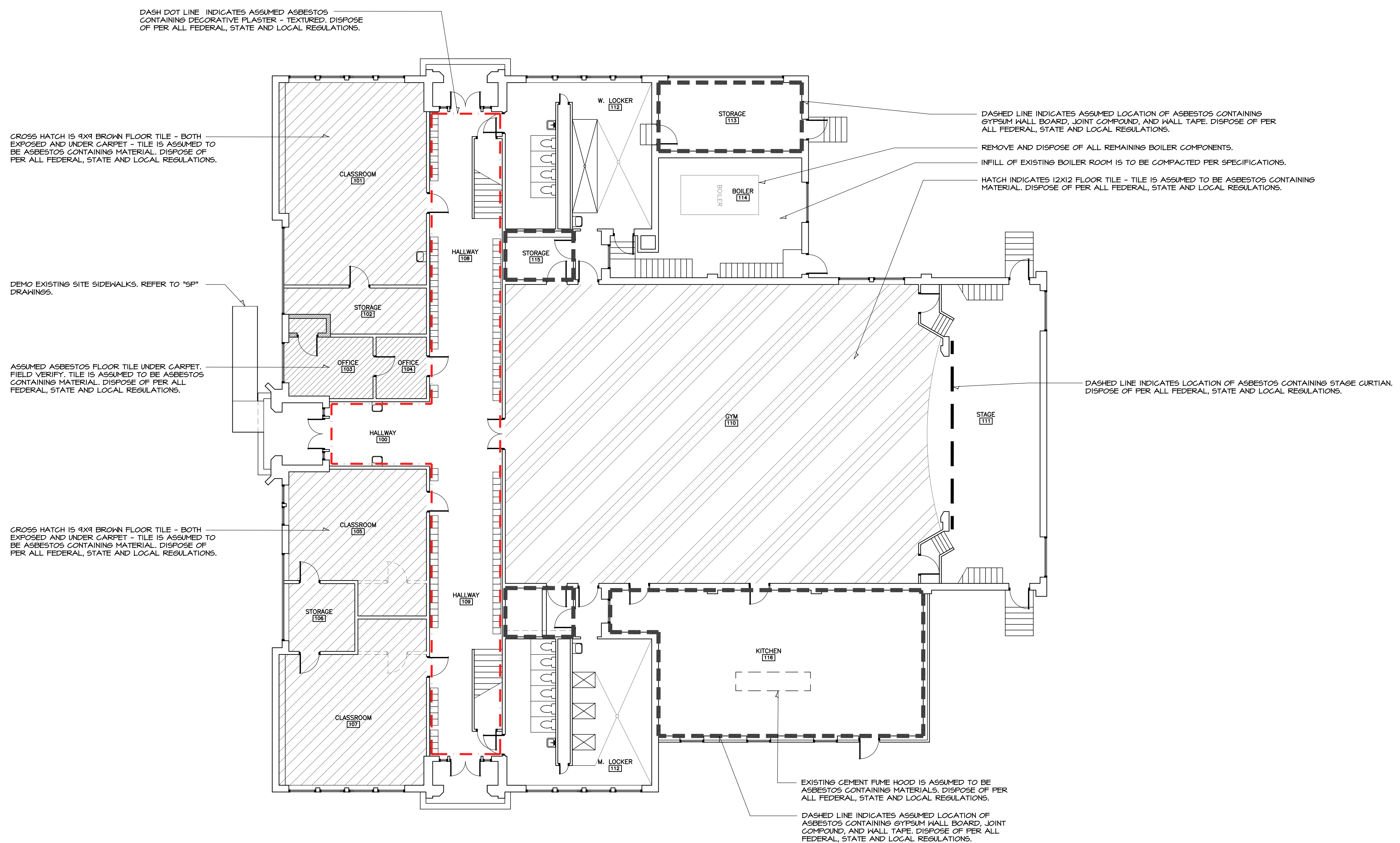


HANNEY & ASSOCIATES, ARCHITECTS
 1726 South Hillside, Wichita, Kansas, 67211
 Phone (316) 883-8965
 Fax (316) 884-1441
 www.hanarchitects.com

2021
5-6 BUILDING DEMO
UNIFIED SCHOOL DISTRICT 358
 -, Oxford, Kansas 67119



DEMO OF EXISTING BUILDING IS TO REMOVE ALL FOOTINGS AND SUB-SURFACE MATERIALS RELATED TO THE CONSTRUCTION OF THIS BUILDING.

ALL ASBESTOS CONTAINING MATERIALS (BOTH KNOWN AND ASSUMED) LOCATIONS INDICATED ON THIS PLAN ARE BASED OFF THE ASBESTOS MANAGEMENT PLAN. REFER TO SPECIFICATIONS.

| DRAWINGS ISSUED | | |
|-----------------|---------|-------------|
| NO. | DATE | ITEM ISSUED |
| 3 | 3/19/21 | BIDS |
| 2 | 3/2/21 | REVIEW |
| 1 | 2/8/21 | REVIEW |

COMPUTER DRAWING

DATE: FEBRUARY, 2021
 DRAWN BY: MH, CH, MB, JC
 CHECKED BY: MRH

SHEET

D1.1

OF 1 SHEETS

DEMO SCOPE
A FIRST FLOOR
 SCALE: 1/8" = 1'-0"

