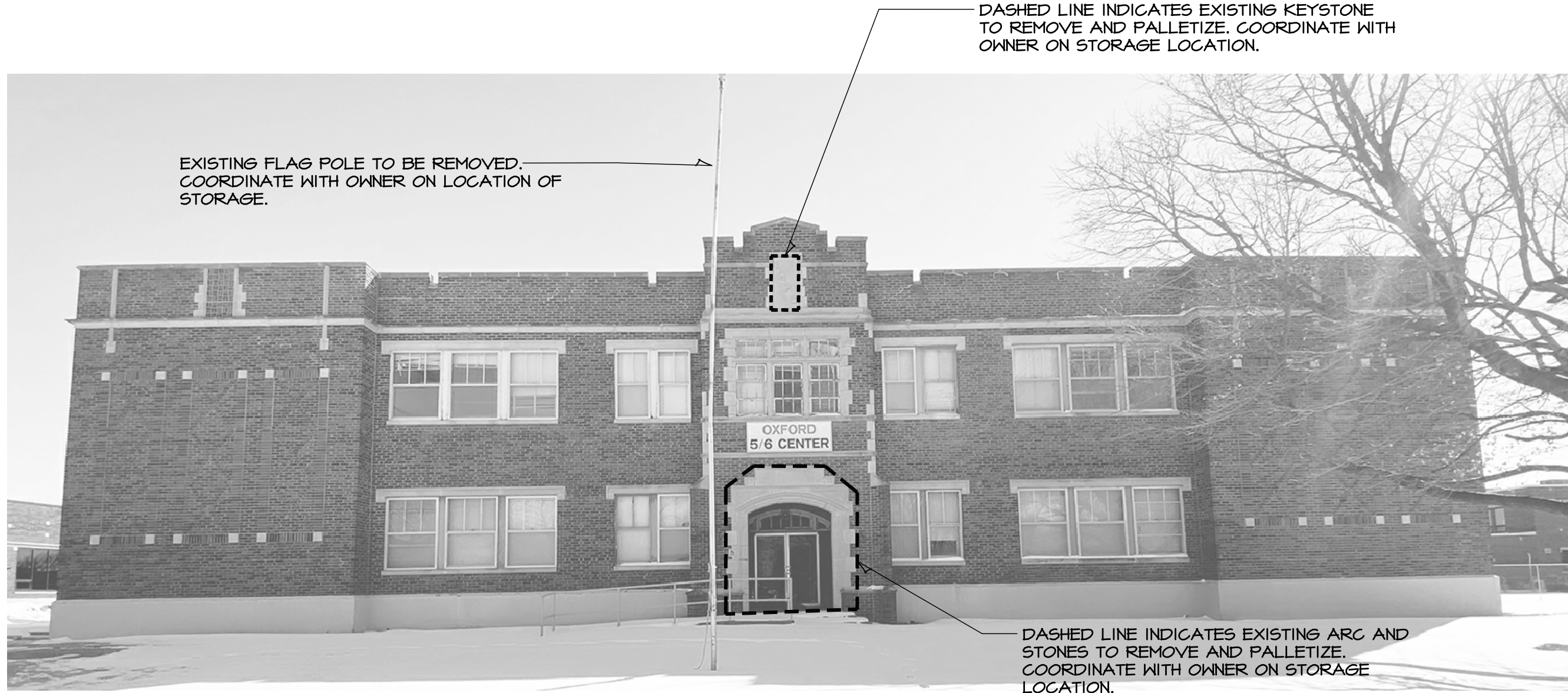


HANNEY & ASSOCIATES, ARCHITECTS
1726 South Hillside, Wichita, Kansas, 67211
Phone (316) 883-8965
Fax (316) 684-1441
www.haarchitects.com

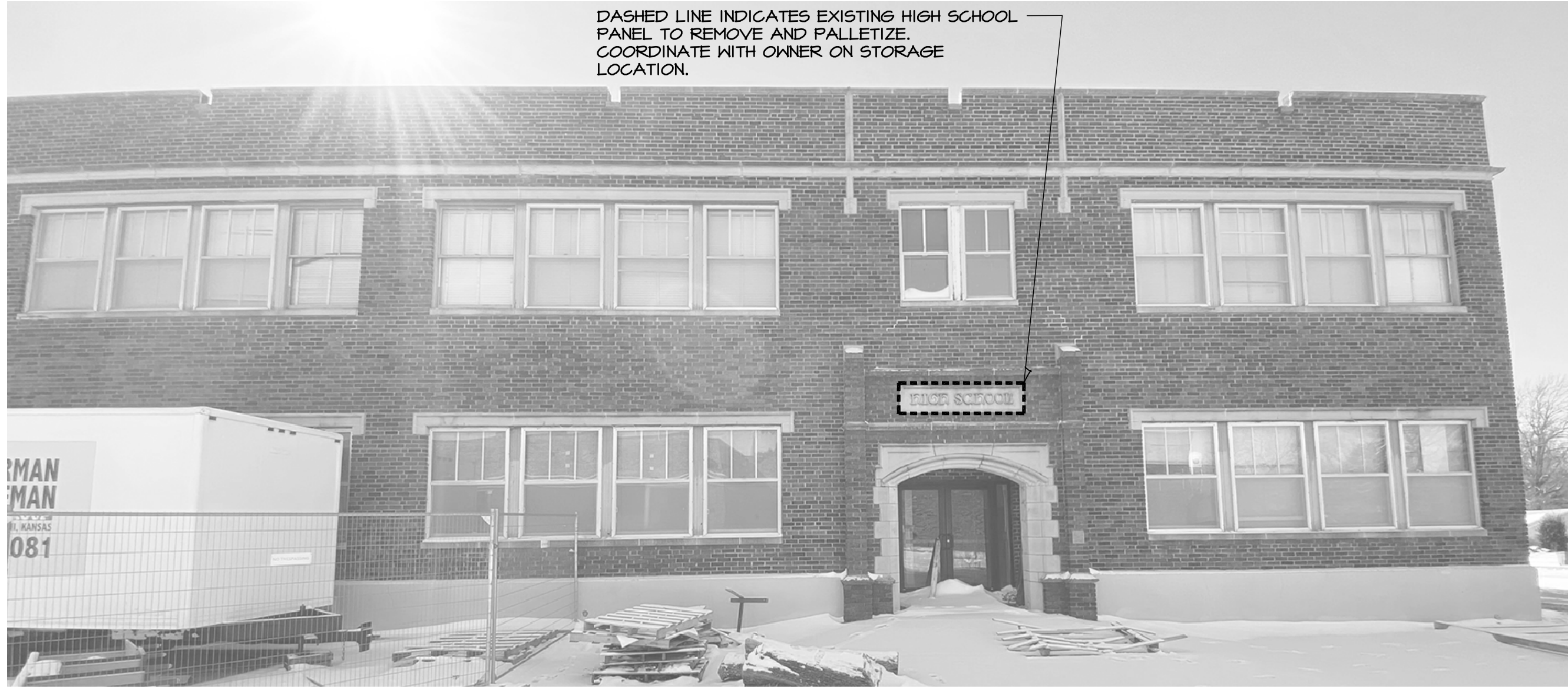
DEMO & ANY ASSOCIATED SUB-CONTRACTORS ARE TO REVIEW ANY EXISTING COMPONENTS TO BE SALVAGED WITH OWNER PRIOR TO DEMO.



SALVAGE COMPONENTS
A WEST ELEVATION
SCALE: N.T.S.



SALVAGE COMPONENTS
B SOUTH ELEVATION
SCALE: N.T.S.



SALVAGE COMPONENTS
C NORTH ELEVATION
SCALE: N.T.S.



SALVAGE COMPONENTS
D EAST ELEVATION
SCALE: N.T.S.

2021
5-6 BUILDING DEMO
UNIFIED SCHOOL DISTRICT 358
-, Oxford, Kansas 67119

DRAWINGS ISSUED		
NO.	DATE	ITEM ISSUED
3	3/15/21	BIDS
2	3/1/21	REVIEW
1	2/8/21	REVIEW

COMPUTER DRAWING
-

DATE: FEBRUARY, 2021
DRAWN BY: MH, CH, MB, JC
CHECKED BY: MRH