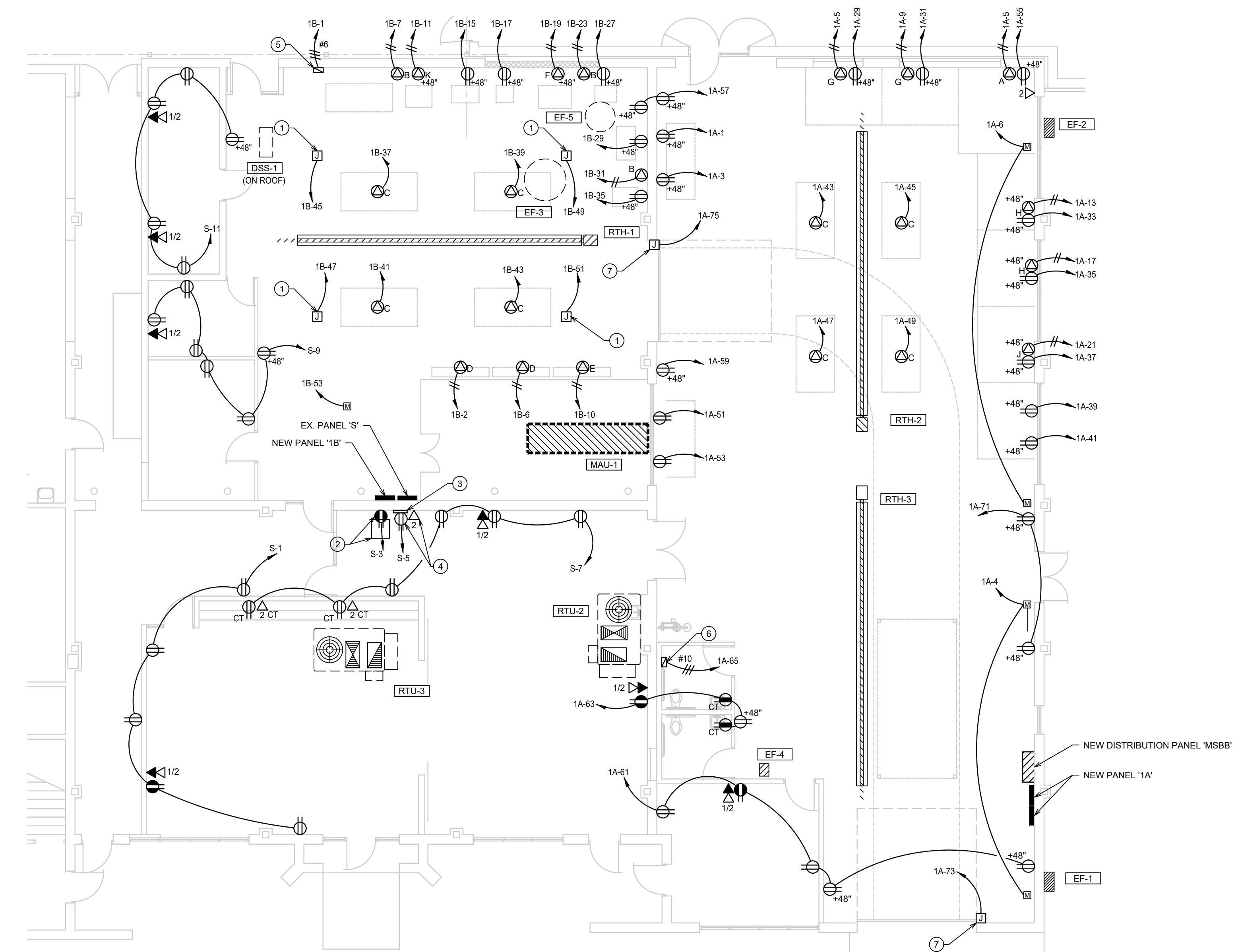


A STORM SHELTER - POWER
SCALE: 1/8" = 1'-0"
NORTH



B INDUSTRIAL ARTS PLAN - POWER
SCALE: 1/8" = 1'-0"
NORTH

GENERAL NOTES:

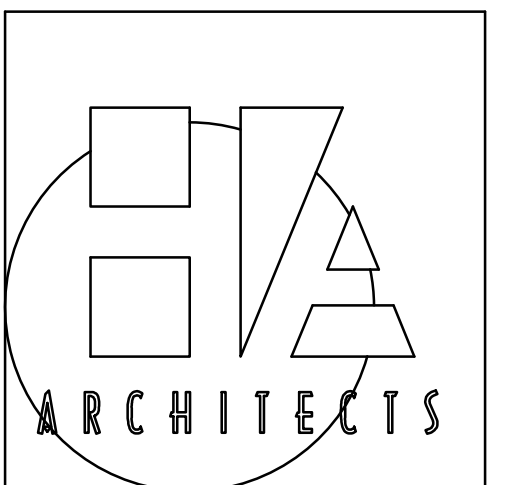
- ALL CIRCUITS INDICATED ON DRAWINGS SHALL BE 20A, 120V CIRCUITS WITH (2)-#12'S AND (1)-#12 G. IN 0.5" CONDUIT U.O.N.
- LABEL ALL SNAP SWITCH COVERPLATES WITH THE PANEL AND CIRCUIT NUMBER.
- REFER TO RELATED ARCHITECTURAL DRAWINGS FOR RELATED INFORMATION.
- REFER TO THE SPECIFICATIONS FOR DATA NOT ON THE DRAWINGS.
- WALL MOUNTING HEIGHTS TO CENTERLINE OF DEVICE UNLESS OTHERWISE NOTED.
- A GROUND CONDUCTOR SIZED PER N.E.C. ARTICLE 250 IS REQUIRED IN ALL POWER, RECEPTACLE, AND LIGHTING CIRCUITS. GROUND CONDUCTORS ARE NOT SHOWN ON DRAWINGS.

PLAN NOTES:

- PROVIDE JUNCTION BOX FOR 120V POWER CONNECTION TO FILTER BOX. CONTRACTOR SHALL COORDINATE EXACT LOCATION AND ELECTRICAL REQUIREMENTS WITH OWNER PROVIDED FILTER BOX PRIOR TO ROUGH IN. PROVIDE TOGGLE SWITCH DISCONNECT AS REQUIRED.
- QUAD RECEPTACLE AND I.T. RACK SHALL BE MOUNTED HIGH ON WALL. COORDINATE LOCATION WITH OWNER PRIOR TO ROUGH IN. CONTRACTOR TO PROVIDE NEW WALL MOUNTED RACK WITH DOOR FOR TELECOM SWITCHES AND PATCH PANELS. NEW I.T. RACK SHALL HAVE NEW 6 STRAIN FIBER RUN FROM THE DISTRICT I.T. CLOSET LOCATED IN THE MAIN SCHOOL BUILDING. REFER TO E2.0 FOR MORE INFORMATION.
- PROPOSED LOCATION OF MASTER CLOCK TRANSMITTER. CONTRACTOR TO PROVIDE SHELVES AND MOUNT HIGH ON WALL IN APPROXIMATELY THIS AREA.
- PROVIDE DUPLEX OUTLET AND DATA OUTLET MOUNTED HIGH ON WALL FOR 120V POWER CONNECTION TO MASTER CLOCK TRANSMITTER.
- PROVIDE 60A/3P/208V DISCONNECT SWITCH FOR POWER CONNECTION TO EXISTING 3-PHASE PLANNER. CONTRACTOR TO VERIFY EXACT ELECTRICAL REQUIREMENTS AND WIRING WITH EXISTING EQUIPMENT. PROVIDE NEW ON/OFF CONTACTOR BUTTON AS REQUIRED.
- PROVIDE 30A/3P/208V DISCONNECT SWITCH FOR POWER CONNECTION TO OWNER PROVIDER AIR COMPRESSOR. COORDINATE EXACT ELECTRICAL REQUIREMENTS WITH EXISTING EQUIPMENT.
- PROVIDE JUNCTION BOX FOR 120V POWER CONNECTION TO OVERHEAD DOOR OPENER. CONTRACTOR TO VERIFY EXACT ELECTRICAL REQUIREMENTS AND WIRING WITH OVERHEAD DOOR OPENER. PROVIDE PUSH BUTTONS AS REQUIRED FOR UP/DOWN OPERATION.
- ELECTRICAL WORK ASSOCIATED IN THIS AREA SHALL BE PRICED UNDER ALTERNATE #6.
- EXISTING GUTTER WAY, DISCONNECTS, AND PANELS IN BOILER ROOM SHALL REMAIN. REFER TO RISER DIAGRAM FOR ADDITIONAL INFORMATION.

CONTRACTOR SHALL COORDINATE ELECTRICAL REQUIREMENTS FOR ALL WOOD AND METAL SHOP EQUIPMENT WITH EQUIPMENT MANUFACTURE AND EXISTING EQUIPMENT THAT THE OWNER INTENDS TO MOVE TO THE RENOVATED SPACE. CONTRACTOR SHALL SURVEY EXISTING EQUIPMENT AS REQUIRED. CONTRACTOR SHALL REVISE PLUG TYPES, FEEDERS, VOLTAGES AND CIRCUIT BREAKERS AS REQUIRED TO COORDINATE WITH EQUIPMENT PROVIDED AS NEW OR EQUIPMENT BEING RELOCATED AND RE-USED.

ALL NEW ELECTRICAL DEVICES LOCATED WITHIN NEW WALLS SHALL BE RECESSED AND ALL NEW ELECTRICAL DEVICES LOCATED ON EXISTING WALLS (THAT ARE NOT BEING FURRED OUT) SHALL BE SURFACE MOUNTED. CONTRACTOR SHALL MAKE BEST EFFORT TO FEED ALL NEW SURFACE MOUNTED DEVICES FROM BEHIND TO MINIMIZE SURFACE MOUNTED RACEWAYS. CONTRACTOR SHALL COORDINATE WALL TYPES WITH ARCHITECTURAL DRAWINGS. CONTRACTOR TO VERIFY LOCATION OF ANY SURFACE MOUNTED RACEWAYS WITH ARCHITECT/ENGINEER PRIOR TO INSTALL. ANY SURFACE MOUNTED RACEWAYS SHALL BE PAINTED TO MATCH WALL COLOR. CONTRACTOR SHALL USE EMT CONDUIT FOR SURFACE MOUNT RACEWAYS IN METAL SHOP/WOOD SHOP AND PLUGMOLD FOR SURFACE MOUNT RACEWAYS IN ALL OTHER LOCATIONS.



HANNEY & ASSOCIATES, ARCHITECTS
1726 South Hillside, Wichita, Kansas, 67211
Phone (316) 683-8965
Fax (316) 684-1441
www.hanarchitects.com

2019
OXFORD JUNIOR/SENIOR HIGH SCHOOL
UNIFIED SCHOOL DISTRICT #358
 515 N Water St, Oxford, KS 67119

DRAWINGS ISSUED		
NO.	DATE	ITEM ISSUED
8	1/27/20	ADDENDUM #3
7	12/20/19	ISSUED FOR BIDS
6	12/16/19	99% BOARD REVIEW
5	12/13/19	99% SUBMITTAL
4	9/20/19	50% REVIEW
3	6/10/19	DESIGN DEVELOPMENT
2	5/13/19	SCHEMATIC DESIGN
1	4/8/19	SCHEMATIC DESIGN

COMPUTER DRAWING

DATE: AUGUST, 2019
DRAWN BY: CHECKED BY:

CK DR SHEET

E2.1
OF 1 SHEETS



Integrated Consulting Engineers, Inc.
319 South Hydraulic • Wichita, KS 67211
316.261.3588 • 316.261.3940 • www.icengines.com