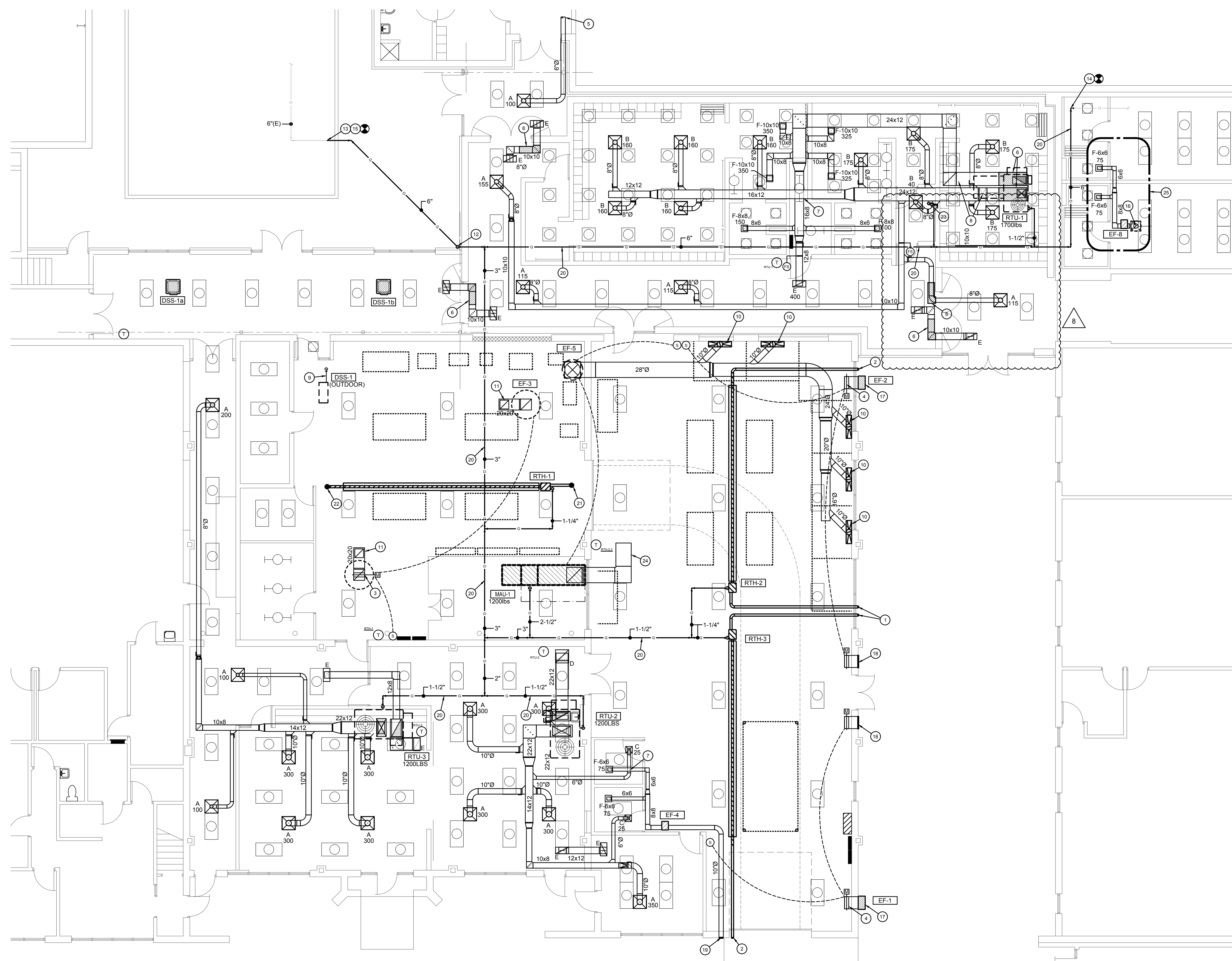


EXPIRES: 04-30-2021
HANNAY & ASSOCIATES, ARCHITECTS
 1726 South Hillside, Wichita, Kansas, 67211
 Phone (316) 683-8965
 Fax (316) 684-1441
 www.haarchitects.com

2019
OXFORD JUNIOR/SENIOR HIGH SCHOOL
UNIFIED SCHOOL DISTRICT # 358
 515 N Water St, Oxford, KS 67119



PLAN NOTES:

- 1 EXTEND INTAKE AIR FROM SIDE WALL TO RTH AND CONNECT. INSTALL PER MANUFACTURERS RECOMMENDATIONS.
- 2 EXTEND VENT PIPING THROUGH SIDE WALL AND TERMINATE PER MANUFACTURERS RECOMMENDATIONS.
- 3 EXTEND 20x20 DUCT UP THROUGH ROOF AND TERMINATE WITH COOK MODEL PR-20 (OR EQUAL) ROOF HOOD. SEAL ROOF PENETRATION WEATHER-TIGHT. PROVIDE NORMALLY-CLOSED 2-POSITION MOTORIZED DAMPER AND INTERLOCK TO OPEN WITH EXHAUST FAN AS INDICATED.
- 4 PROVIDE MOTORIZED DAMPER IN 24x24 EXHAUST DUCT. PROVIDE EXPANDED METAL GRATE TO COVER OPENING.
- 5 EXTEND 6"Ø BRANCH DUCT BACK TO GYM RTU AND CONNECT. PROVIDE MANUAL BALANCING DAMPER AND BALANCE DIFFUSER TO 100CFM.
- 6 PROVIDE STRUCTURAL STEEL DUCT SHROUD TO PROTECT DUCT PENETRATION INTO SHELTER. REFER TO DETAIL ON STRUCTURAL SHEETS FOR ADDITIONAL INFORMATION.
- 7 OFFSET DUCTWORK AS REQUIRED FOR DUCT ROUTING.
- 8 ROUTE DUCT WORK IN JOIST SPACE. EXTEND DUCTWORK DOWN BELOW JOIST SPACE. COORDINATE WITH BUILDING STRUCTURAL.
- 9 EXTEND E2-PULL LINE SETS FROM (1) OUTDOOR UNIT LOCATED ON ROOF TO CORRESPONDING (2) INDOOR UNITS. PROVIDE PIPING ROOF PENETRATION PER DETAIL ON SHEET MP1.3.
- 10 CONTRACTOR TO FABRICATE AND INSTALL SLOT HOOD. REFER TO TYPICAL DETAILS FOR INFORMATION. HOOD SHALL BE CENTERED ALONG THE WALL ON THE WORK TABLE. PROVIDE N/O BLAST GATE DAMPER FOR EACH RISER FROM THE WELDING HOOD. REFER TO DETAIL ON SHEET MP1.3 FOR ADDITIONAL INFORMATION.
- 11 PROVIDE 18x18 OPENING IN TOP OF DUCTWORK WITH 1/2" EXPANDED METAL GRATE.
- 12 EXTEND 6" GAS PIPING ABOVE GRADE TO ABOVE ROOF. PROVIDE SHUT-OFF VALVE AT GRADE. EXTEND TIGHT TO WALL AND PAINT PIPING TO MATCH EXTERIOR. COORDINATE WITH ARCHITECT FOR COLOR.
- 13 EXTEND 6" GAS PIPING BELOW GRADE TO EXISTING 6" GAS PIPING AND CONNECT. FIELD VERIFY EXISTING CONDITIONS.
- 14 EXTEND 6" GAS PIPING TO EXISTING 6" GAS PIPING LOCATED ON ROOF AND CONNECT. FIELD VERIFY EXISTING CONDITIONS.
- 15 CONTRACTOR TO COORDINATE WITH LOCAL UTILITY TO DETERMINE IF EXISTING GAS METER & SERVICE LINE HAS CAPACITY FOR NEW ADDITIONAL LOAD = TOTAL 1285MBH.
- 16 EXTEND 10"Ø EXHAUST DUCT UP THROUGH ROOF AND TERMINATE WITH COOK HOOD PR-8
- 17 MOUNT EXHAUST FAN AT 16' A.F.F. COORDINATE MOUNTING HEIGHT WITH EXISTING CONDITIONS AND BRICK COURSING.
- 18 PROVIDE 24x24 RUSKIN ELF375DX L LOUVER. PROVIDE MOTORIZED DAMPER IN 24x24 INTAKE AIR DUCT. PROVIDE EXPANDED METAL GRATE TO COVER OPENING. MOUNT LOUVER AT 16' A.F.F. COORDINATE MOUNTING HEIGHT AND LOCATION WITH EXISTING CONDITIONS AND BRICK COURSING.
- 19 EXTEND 10"Ø EXHAUST DUCT TO EXTERIOR AND TERMINATE WITH WALL CAP. COORDINATE WITH EXISTING CONDITIONS.
- 20 GAS PIPING LOCATED ON ROOF. PROVIDE WITH MIRO SUPPORTS PER DETAIL ON SHEET MP1.2.
- 21 EXTEND INTAKE AIR FROM SIDE ROOF TO RTH AND CONNECT. INSTALL PER MANUFACTURERS RECOMMENDATIONS.
- 22 EXTEND VENT PIPING UP THROUGH ROOF AND TERMINATE PER MANUFACTURERS RECOMMENDATIONS.
- 23 EXTEND 1-1/2" GAS PIPING DOWN THROUGH ROOF TO SERVE GWH-1. SEAL PENETRATION WEATHER TIGHT.
- 24 EXTEND 28x28 MAKE-UP AIR DUCT THROUGH WALL AND TERMINATE AS SHOWN. PROVIDE EXPANDED METAL GRATE TO COVER OPENING.
- 25 ALL WORK IN AREA TO BE A PART OF ALTERNATE #6

NOTE:
 PAINT ALL GAS PIPING
 LOCATED ON ROOF WITH UV
 PROTECTIVE PAINT.

DRAWINGS ISSUED		
NO.	DATE	ITEM ISSUED
8	1/21/20	ADDENDUM #3
1	12/20/19	ISSUED FOR BIDS
6	12/16/19	99% BOARD REVIEW
5	12/13/19	99% SUBMITTAL
4	9/20/19	50% REVIEW
3	6/10/19	DESIGN DEVELOPMENT
2	5/13/19	SCHEMATIC DESIGN
1	4/8/19	SCHEMATIC DESIGN

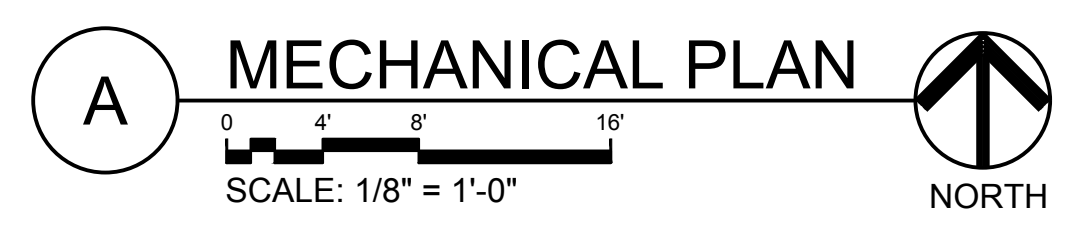
COMPUTER DRAWING

DATE: AUGUST, 2019
 DRAWN BY: JEH CHECKED BY: DDV

SHEET

M1.1

OF 1 SHEETS



1/29/2020 8:27:05 AM
 M:\2019\19115.00 - 107 - Oxford High School Renovation\Mechanical Files\19115.00 - M1.1 - M1.2.dwg

