

HANNEY & ASSOCIATES, ARCHITECTS
 1726 South Hillside, Wichita, Kansas, 67211
 Phone (316) 683-8965
 Fax (316) 684-1441
 www.haarchitects.com

2019
 OXFORD JUNIOR/SENIOR HIGH SCHOOL
 UNIFIED SCHOOL DISTRICT #358
 515 N Water St, Oxford, KS 67119

DRAWINGS ISSUED		
NO.	DATE	ITEM ISSUED
8	1/30/20	ADDENDUM
7	12/31/19	ISSUED FOR BIDS
6	12/16/19	99% BOARD REVIEW
5	12/13/19	99% SUBMITTAL
4	1/20/19	50% REVIEW
3	6/10/19	DESIGN DEVELOPMENT
2	5/13/19	SCHEMATIC DESIGN
1	4/8/19	SCHEMATIC DESIGN

COMPUTER DRAWING

DATE: DEC. 31, 2019
 DRAWN BY: PS CHECKED BY: PS

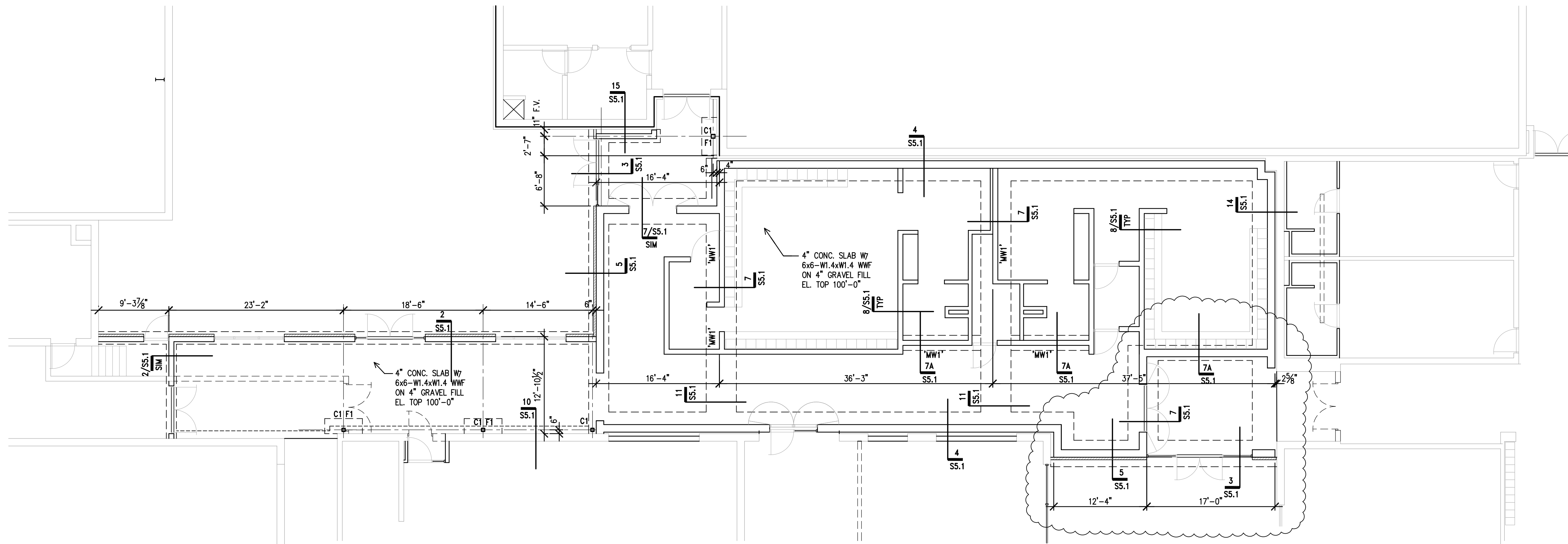
SHEET

S2.1

OF 1 SHEETS



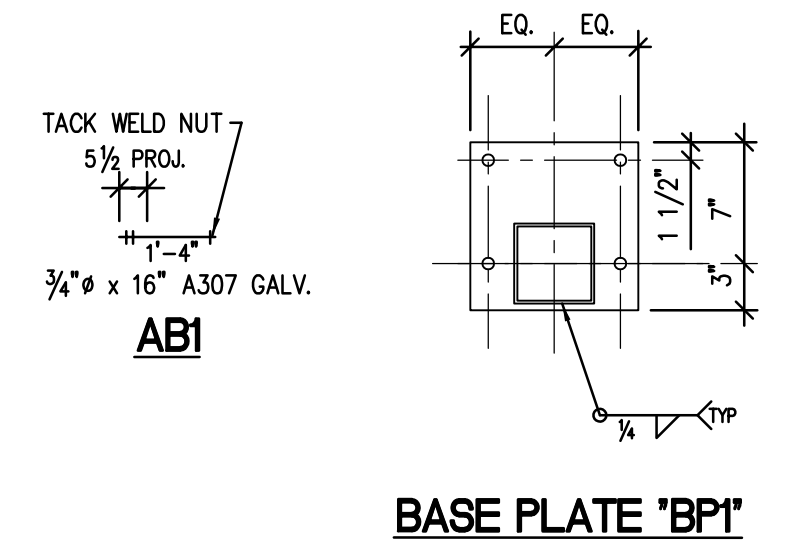
STEWART ENGINEERING
 CONSULTANTS, LLC
 2060 INDEPENDENCE ROAD
 SEDAN, KANSAS 67561
 Phone 620.262.2828
 EMAIL: patricia.pe@semail.com
 JOB NO. 19-109



A FOUNDATION PLAN
 1/8" = 1'-0"
 PLAN NOTES:
 1. VERIFY ALL DIMENSIONS W/ ARCH'L.

STEEL COLUMN SCHEDULE					
MARK	COLUMN SIZE	BASE PL.	DETAIL	EL. BOT.	REMARKS
C1	HSS 5 x 5 x 1/4	1" x 12" x 1'-0"	BP1	99'-5"	(4) "AB1" ANCHOR BOLTS

COLUMN FOOTING SCHEDULE				
MARK	EL. TOP	FOOTING SIZE	REINF. EACH WAY	REMARKS
F1	99'-4"	2'-0" x 5'-0" x 3'-6"	(3) #5 LONG. & #4 TIES @ 16"	--



BASE PLATE 'BP1'