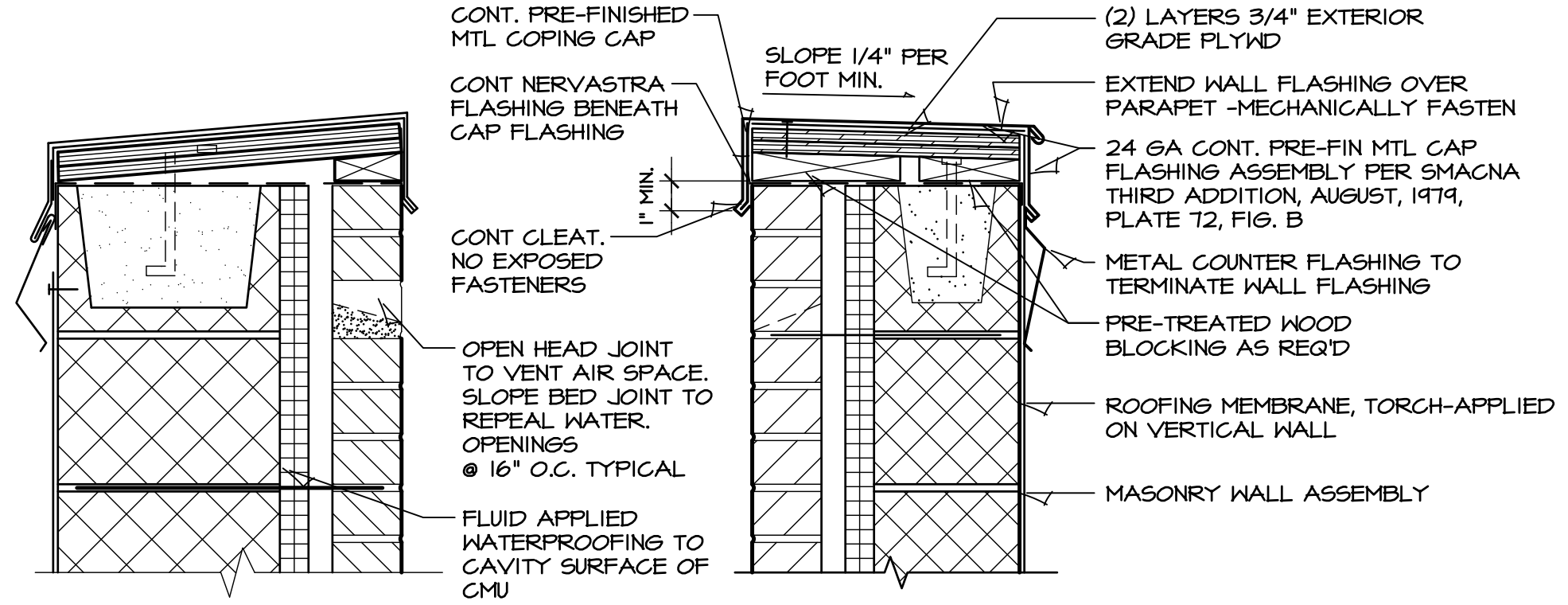


PROVIDE "END DAMS" ON ALL METAL FLASHING THAT TERMINATES AT MASONRY PENETRATIONS TO PREVENT MOISTURE FROM RUNNING OUT OF THE SIDES OF THE FLASHING PRIOR TO EXITING THE WALL SYSTEM VIA THE KEEP HOLES. THE GENERAL CONTRACTOR AND MASONRY CONTRACTOR SHALL REVIEW THE LOCATIONS WITH THE ARCHITECT PRIOR TO INSTALLATION.

THE LAP SEAMS OF THE WALL FLASHING SHALL BE SEALED WITH A SILICON SEALANT. THIS SYSTEM SHALL BE REVIEWED WITH THE ARCHITECT WHEN MASONRY ERECTION IS BEGINNING. LAP THE FLASHING A MINIMUM OF 4". BUILDING PAPER SHALL LAP OVER THE TOP OF THE WALL FLASHING. WHERE THE WALL FLASHING IS INSTALLED ABOVE THE FINISH FLOOR, EXTEND THE END TAB VERTICALLY TO FACILITATE ATTACHMENT TO THE GYP SHEATHING. ANCHOR EVERY 16" ON CENTER. SEAL TOP EDGE TO PREVENT MOISTURE PENETRATION BEHIND THE FLASHING - LAP BUILDING PAPER OVER TOP ATTACHMENT.

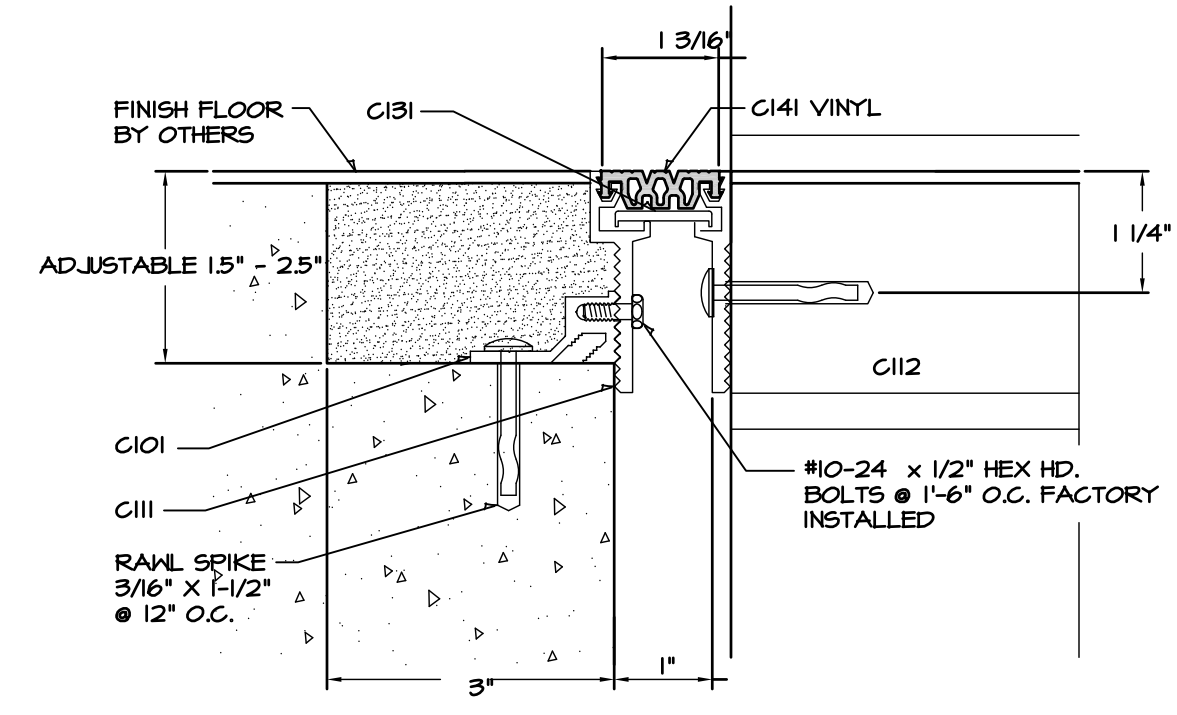
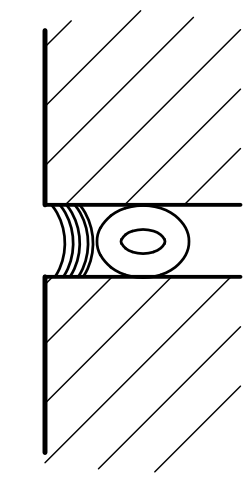
THROUGH-WALL FLASHINGS SHOULD BE EXTENDED TO WITHIN 1/2" OF THE EXTERIOR FACE OF THE BRICK AND SHOULD BE USED WHEREVER THERE IS A MASONRY WALL OPENING, CONTINUOUSLY AT THE UPPER FLOOR AND CONTINUOUSLY AT GRADE. GENERAL CONTRACTOR AND ARCHITECT TO REVIEW THE FINISH GRADE WITH RESPECT TO THE MOUNTING HEIGHT OF THE THROUGH-WALL FLASHING PRIOR TO BEGINNING THE MASONRY LAYOUT - RAISING THE FLASHING AND KEEP HOLES AS REQUIRED TO KEEP THE KEEPS AT LEAST 2" ABOVE THE FINISHED GRADE.



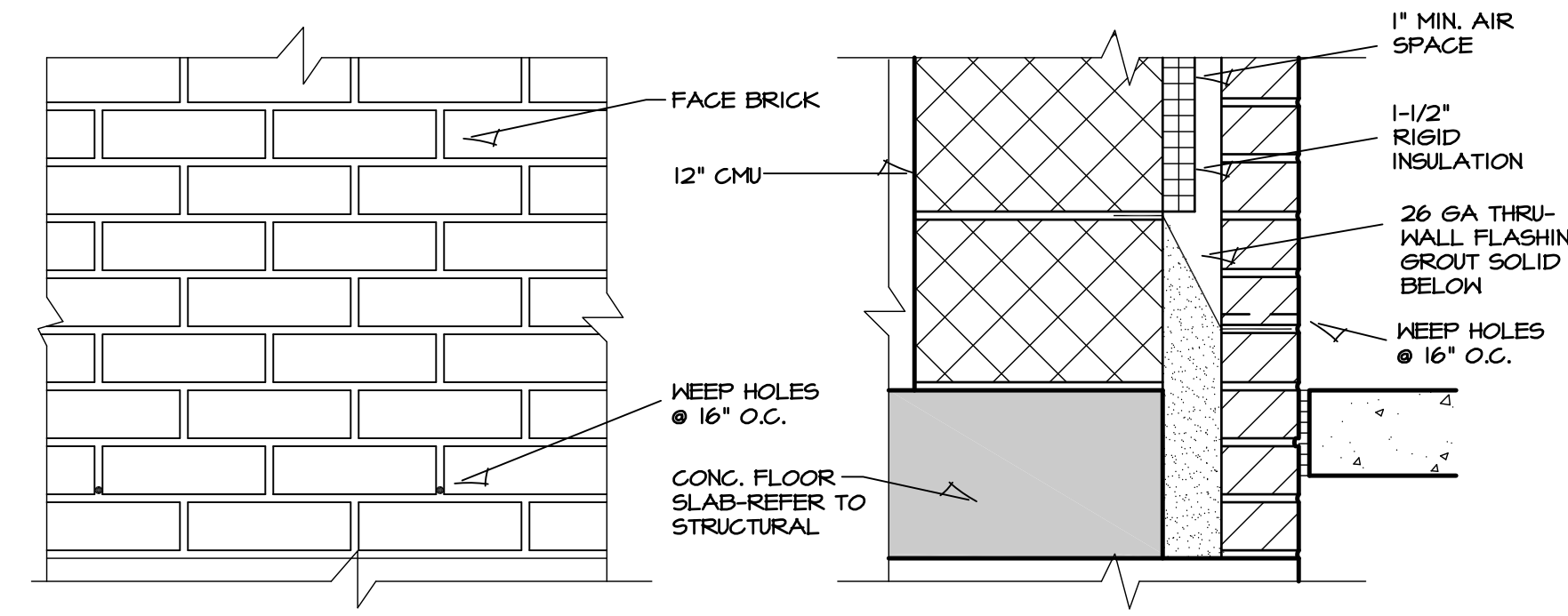
**1 DETAIL-OPEN HEAD JOINT**  
SCALE: 1-1/2" = 1'-0"

**3 DETAIL-CAP FLASHING**  
SCALE: 1-1/2" = 1'-0"

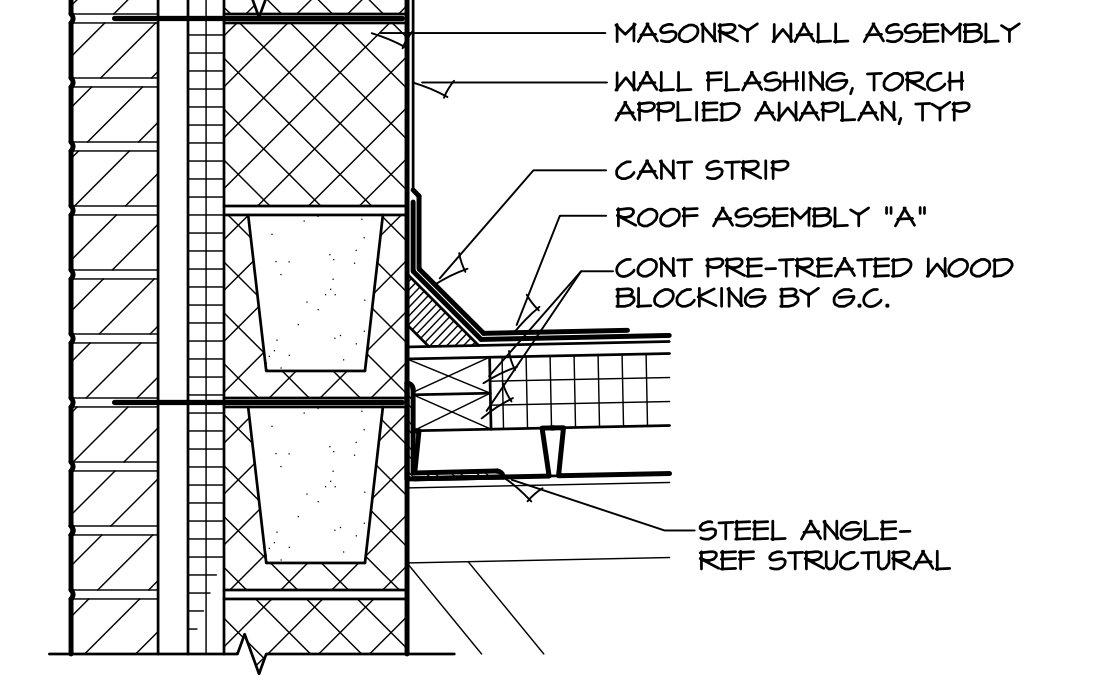
INDICATES THE FACE BRICK ON EACH SIDE OF THE JOINT-- MASONRY CONTROL AND EXPANSION JOINTS SHALL BE INSTALLED PER THE "BRICK INSTITUTE OF AMERICA" RECOMMENDATIONS FOR GOOD CONSTRUCTION PRACTICES. NOTIFY ARCHITECT OF ANY DEVIATIONS AND DEFICIENCIES PRIOR TO INSTALLATION. FINAL LOCATION OF THE JOINTS SHALL BE BY THE ARCHITECT. LEAVE JOINT FREE OF MORTAR AND DEBRIS. FULL HEIGHT OF JOINT. REINFORCING SHALL NOT EXTEND THROUGH JOINT UNLESS NOTED OTHERWISE. INSTALL BACKER ROD, SIZED FOR JOINT. INSTALL SEALANT AS SPECIFIED. COLOR SHALL BE SELECTED BY THE ARCHITECT FROM MANUFACTURER'S STANDARD COLORS. COLORS MAY VARY DUE TO CHANGES IN SUBSTRATE. FOLLOW TOOLING, LIGHTLY HAND BROADCAST MASON'S SAND ONTO THE SURFACE OF THE FINISHED SEALANT (ONLY NECESSARY WITH GREY GROUT TO APPEAR MORE LIKE MORTAR).



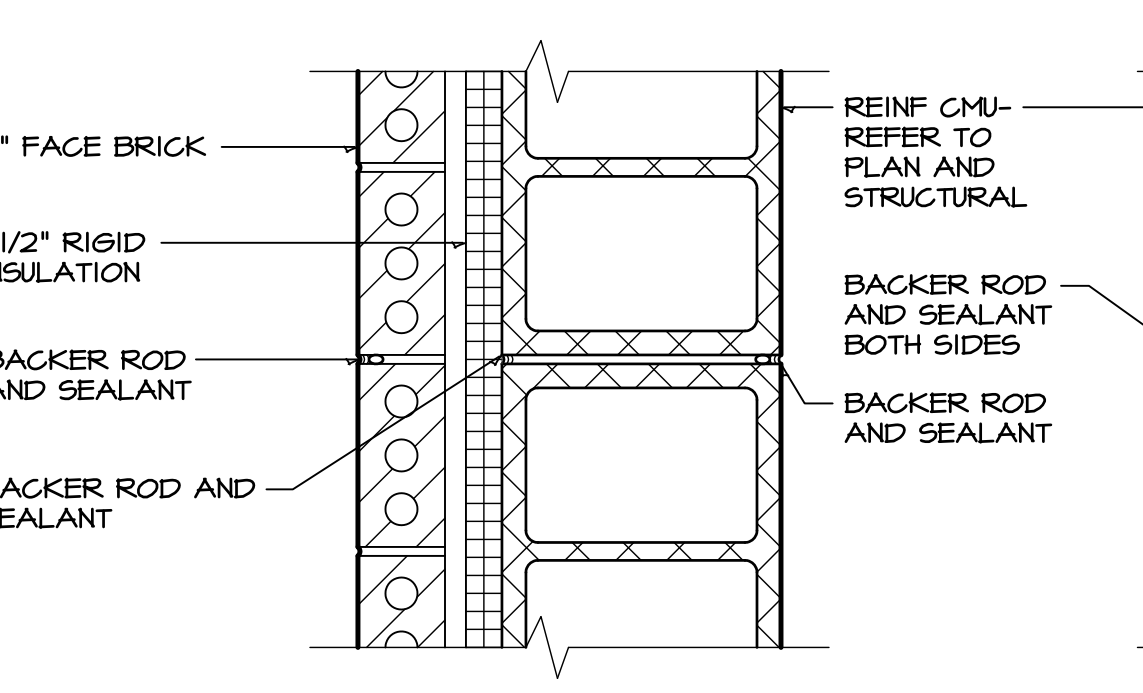
**6 DETAIL-EXPANSION JOINT**  
SCALE: 1-1/2" = 1'-0"



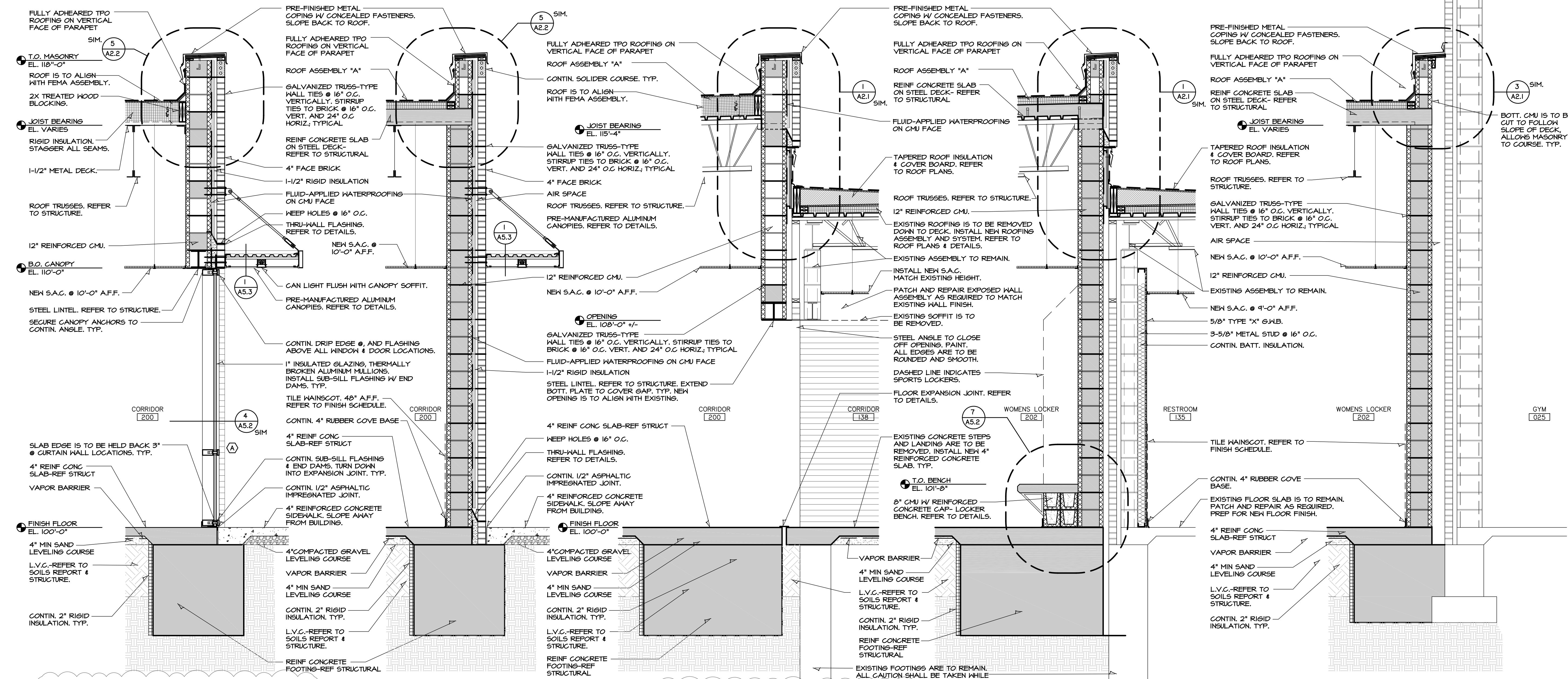
**2 DETAIL-WEEP HOLES**  
SCALE: 1-1/2" = 1'-0"



**4 DETAIL-BASE FLASHING**  
SCALE: 1-1/2" = 1'-0"



**5 DETAIL-EXPANSION JOINT**  
SCALE: 1-1/2" = 1'-0"



**A WALL SECTION**  
SCALE: 1/2" = 1'-0"

**B WALL SECTION**  
SCALE: 1/2" = 1'-0"

**C WALL SECTION**  
SCALE: 1/2" = 1'-0"

**D WALL SECTION**  
SCALE: 1/2" = 1'-0"

**E WALL SECTION**  
SCALE: 1/2" = 1'-0"



HANNEY & ASSOCIATES, ARCHITECTS  
1726 South Hillside, Wichita, Kansas, 67211  
Phone (316) 883-8965  
Fax (316) 884-1441  
www.hanneyarchitects.com

**2019**  
**OXFORD JUNIOR/SENIOR HIGH SCHOOL**  
**UNIFIED SCHOOL DISTRICT #358**  
 515 N Water St, Oxford, KS 67119

DRAWINGS ISSUED		
NO.	DATE	ITEM ISSUED
8	1/21/20	ADDENDUM # 3
7	2/20/19	ISSUED FOR BIDS
6	12/16/18	99% BOARD REVIEW
5	12/13/18	99% SUBMITTAL
4	9/20/18	50% REVIEW
3	6/10/18	DESIGN DEVELOPMENT
2	5/13/18	SCHEMATIC DESIGN
1	4/8/18	SCHEMATIC DESIGN

COMPUTER DRAWING  
358\_HIS\_A501.dwg

DATE: AUGUST, 2019  
DRAWN BY: MH, CH, MB, JC  
CHECKED BY: MRH

SHEET  
**A5.1**  
OF 1 SHEETS