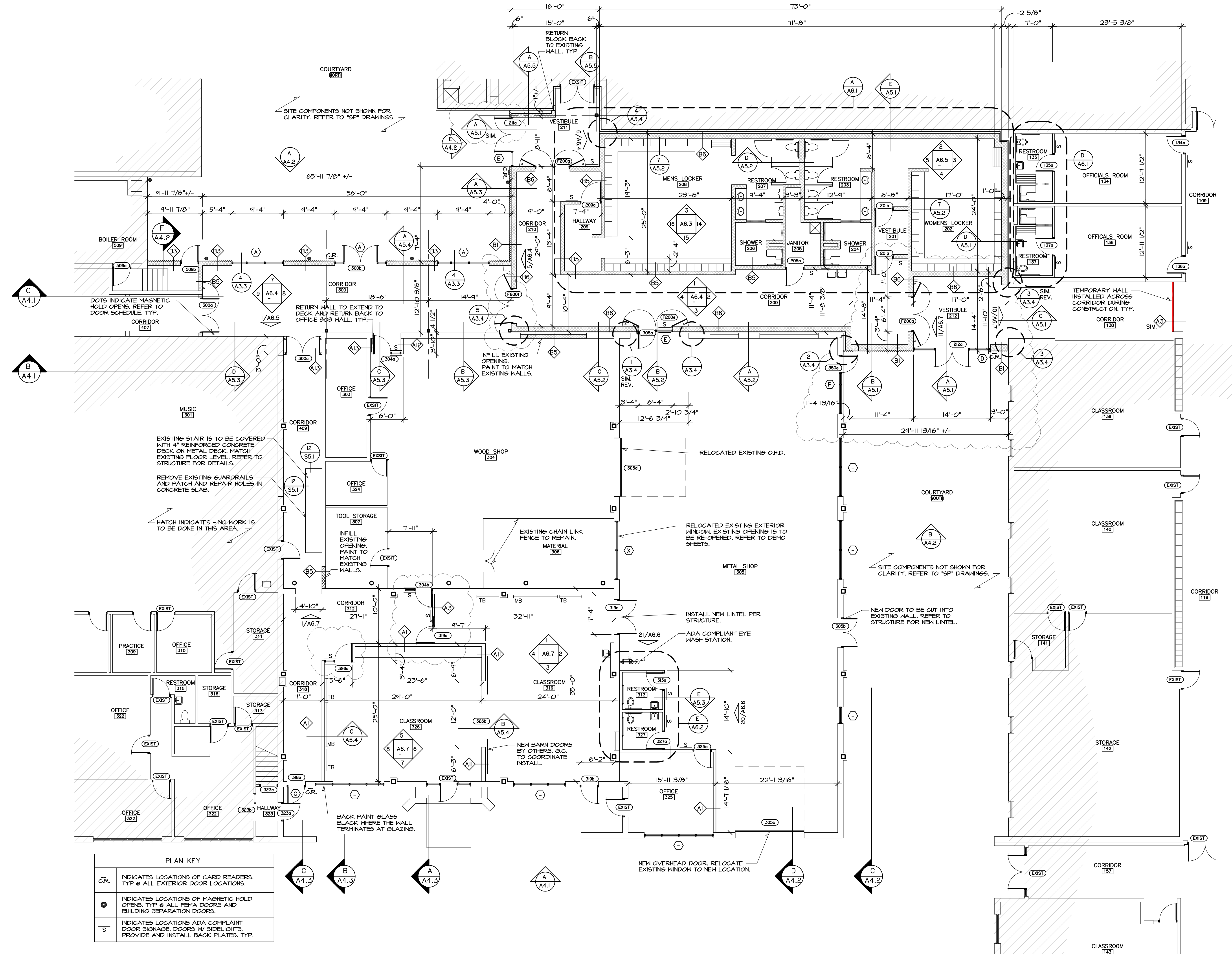




HANNEY & ASSOCIATES, ARCHITECTS
 1726 South Hillside, Wichita, Kansas, 67211
 Phone (316) 883-8985
 Fax (316) 884-1441
 www.hanarchitects.com

2019
 OXFORD JUNIOR/SENIOR HIGH SCHOOL
 UNIFIED SCHOOL DISTRICT #358
 515 N Water St, Oxford, KS 67119



PLAN KEY

C.R.	INDICATES LOCATIONS OF CARD READERS. TYP. ● ALL EXTERIOR DOOR LOCATIONS.
●	INDICATES LOCATIONS OF MAGNETIC HOLD OPENS. TYP. ● ALL FEMA DOORS AND BUILDING SEPARATION DOORS.
S	INDICATES LOCATIONS ADA COMPLIANT DOOR SIGNAGE. DOORS W/ SIDELIGHTS, PROVIDE AND INSTALL BACK PLATES. TYP.

A ENLARGED FLOOR PLAN
 SCALE: 1/8" = 1'-0"
 NORTH

DRAWINGS ISSUED

NO.	DATE	ITEM ISSUED
8	1/21/20	ADDENDUM # 3
7	2/20/19	ISSUED FOR BIDS
6	12/16/19	99% BOARD REVIEW
5	12/13/19	99% SUBMITTAL
4	9/20/19	50% REVIEW
3	6/10/19	DESIGN DEVELOPMENT
2	5/13/19	SCHEMATIC DESIGN
1	4/8/19	SCHEMATIC DESIGN

COMPUTER DRAWING
 358_ELEM_A401

DATE: AUGUST, 2019
 DRAWN BY: MRH
 CHECKED BY: MRH