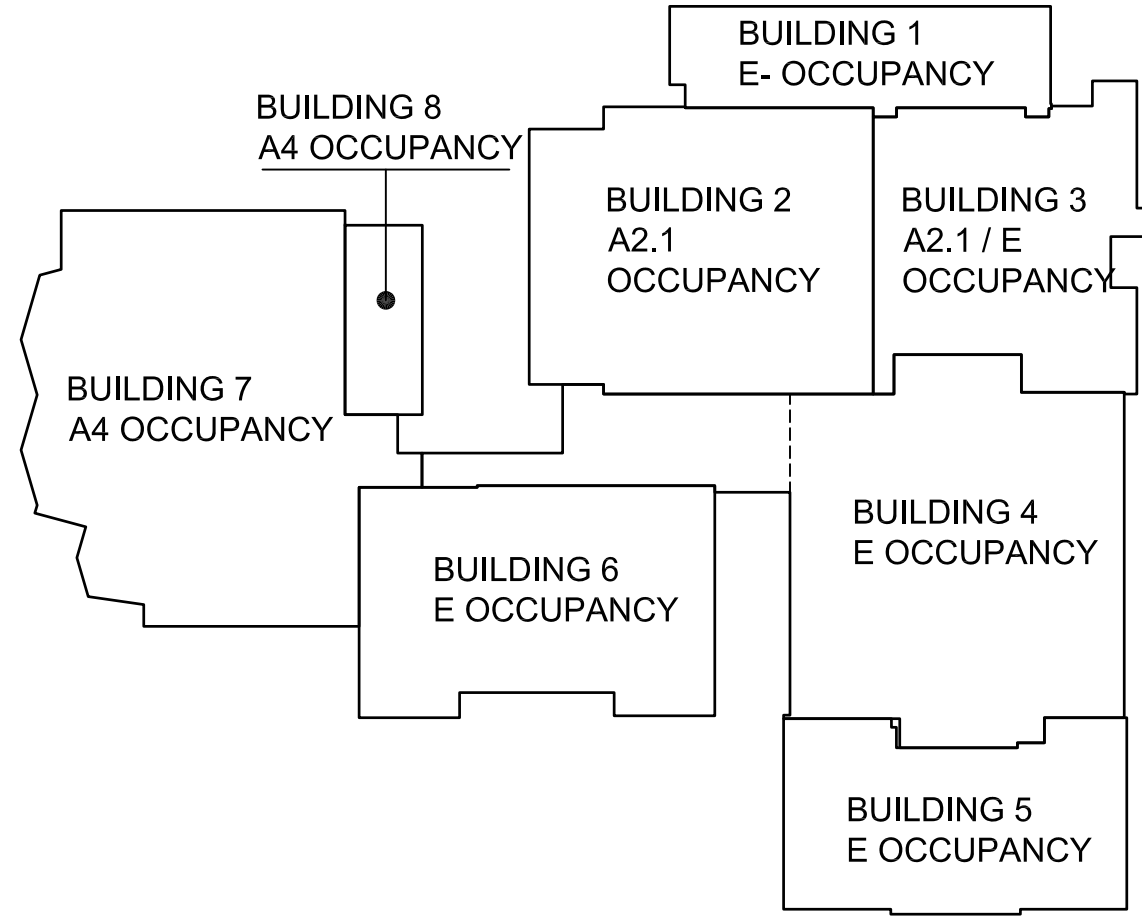
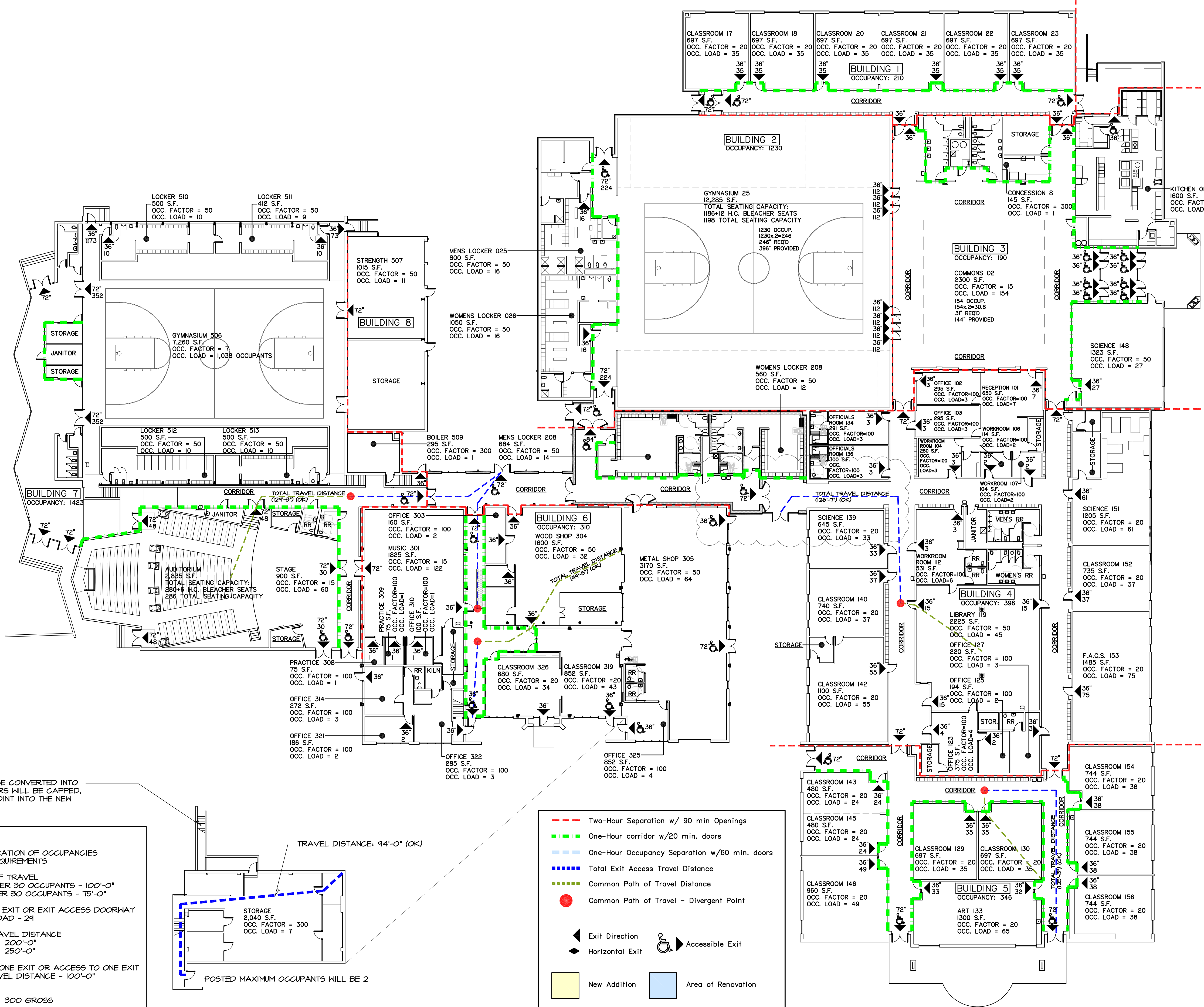




HANNEY & ASSOCIATES, ARCHITECTS
 1726 South Hillside, Wichita, Kansas, 67211
 Phone (316) 883-8965
 Fax (316) 884-1441
 www.hanneyarchitects.com

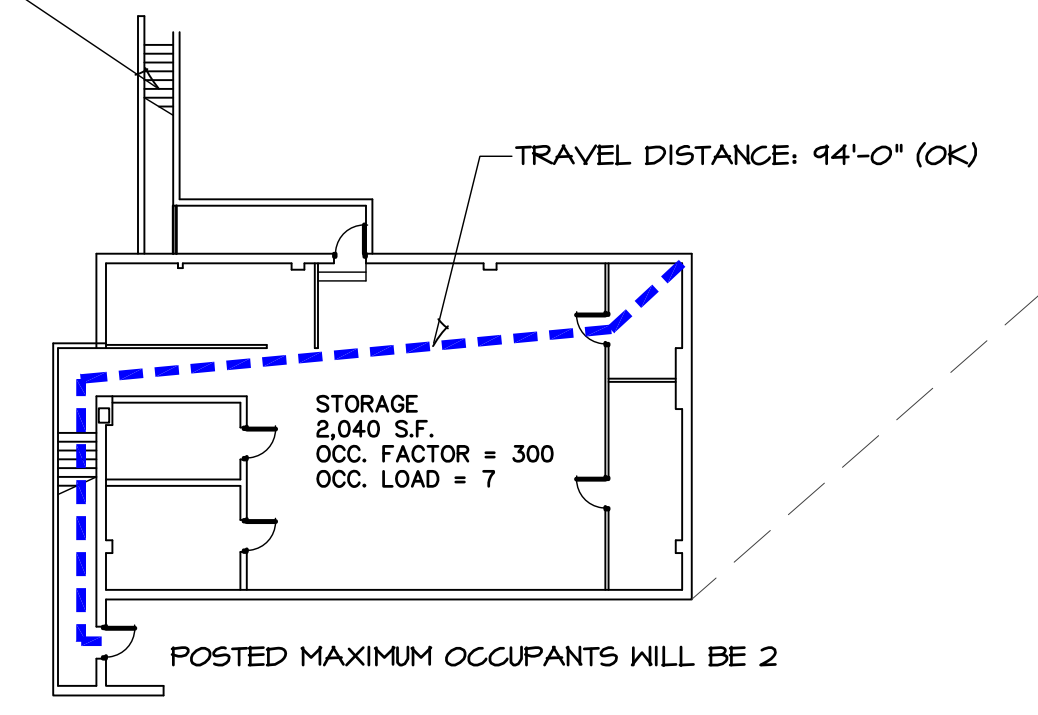


CODE KEY PLAN



EXISTING LOCKER ROOM IS TO BE CONVERTED INTO STORAGE. EXISTING NORTH STAIRS WILL BE CAPPED, ALLOWING ONLY ONE ACCESS POINT INTO THE NEW STORAGE ROOM.

IBC 2012:
 TABLE 508.4 - REQUIRED SEPARATION OF OCCUPANCIES E & S - NO SEPARATION REQUIREMENTS
 TABLE 1014.3 - COMMON PATH OF TRAVEL
 "S" - NON-SPRINKLED - UNDER 30 OCCUPANTS - 100'-0"
 OVER 30 OCCUPANTS - 75'-0"
 TABLE 1015.1 - SPACES WITH ONE EXIT OR EXIT ACCESS DOORWAY
 "S" - MAXIMUM OCCUPANT LOAD - 24
 TABLE 1016.2 - EXIT ACCESS TRAVEL DISTANCE
 "S-1" WITHOUT SPRINKLER 200'-0"
 WITH SPRINKLER 250'-0"
 TABLE 1021.2(2) - STORIES WITH ONE EXIT OR ACCESS TO ONE EXIT
 "S" - 24 OCCUPANTS & TRAVEL DISTANCE - 100'-0"
 ALLOWABLE FLOOR AREA:
 ACCESSORY STORAGE - 300 GROSS



Legend for Overall Code Plan:

- Two-Hour Separation w/ 90 min Openings
- One-Hour corridor w/20 min. doors
- One-Hour Occupancy Separation w/60 min. doors
- Total Exit Access Travel Distance
- Common Path of Travel Distance
- Common Path of Travel - Divergent Point
- Exit Direction
- Horizontal Exit
- Accessible Exit
- New Addition
- Area of Renovation

EXISTING NON-COMPLAINT AREA
B EXISTING BASEMENT LOCKER ROOM
 SCALE: 1" = 20'-0"
 NORTH

A OVERALL CODE PLAN
 SCALE: 1" = 20'-0"
 NORTH

2019
 OXFORD JUNIOR/SENIOR HIGH SCHOOL
 UNIFIED SCHOOL DISTRICT #358
 515 N Water St, Oxford, KS 67119

DRAWINGS ISSUED		
NO.	DATE	ITEM ISSUED
8	1/21/20	ADDENDUM # 3
7	12/20/19	ISSUED FOR BIDS
6	12/16/19	99% BOARD REVIEW
5	12/13/19	99% SUBMITTAL
4	11/20/19	50% REVIEW
3	6/10/19	DESIGN DEVELOPMENT
2	5/13/19	SCHEMATIC DESIGN
1	4/8/19	SCHEMATIC DESIGN

COMPUTER DRAWING
 858_18_CODE

DATE: AUGUST, 2019
 DRAWN BY: MRH, CH, MB, JC
 CHECKED BY: MRH