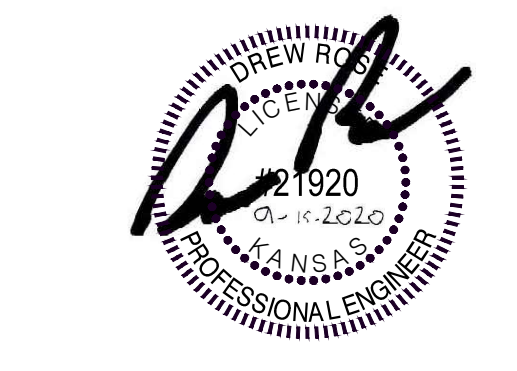


GENERAL NOTES:

1. ALL CIRCUITS INDICATED ON DRAWINGS SHALL BE 20A, 120V CIRCUITS WITH (2) #12'S AND (1) #12 G. IN 0.5" CONDUIT U.O.N.
2. LABEL ALL SNAP SWITCH COVERPLATES WITH THE PANEL AND CIRCUIT NUMBER.
3. REFER TO RELATED ARCHITECTURAL DRAWINGS FOR RELATED INFORMATION.
4. REFER TO THE SPECIFICATIONS FOR DATA NOT ON THE DRAWINGS.
5. WALL MOUNTING HEIGHTS TO CENTERLINE OF DEVICE UNLESS OTHERWISE NOTED.
6. A GROUND CONDUCTOR SIZED PER N.E.C. ARTICLE 250 IS REQUIRED IN ALL POWER, RECEPTACLE, AND LIGHTING CIRCUITS. GROUND CONDUCTORS ARE NOT SHOWN ON DRAWINGS.

PLAN NOTES:

1. PROVIDE A JUNCTION BOX FOR 120V POWER CONNECTION TO EXTERIOR BUILDING SIGNAGE. COORDINATE ALL REQUIREMENTS WITH SIGNAGE MANUFACTURE PRIOR TO ROUGH-IN.
2. PROVIDE A JUNCTION BOX FOR 120V POWER CONNECTION TO INTEGRAL CANOPY LIGHTING PROVIDED BY OTHERS. COORDINATE ALL REQUIREMENTS WITH EQUIPMENT PROVIDED PRIOR TO ROUGH-IN.
3. PROVIDE JUNCTION BOX AS REQUIRED FOR POWER CONNECTION TO TRACK LIGHTING.



HANNEY & ASSOCIATES, ARCHITECTS
 1726 South Hillside, Wichita, Kansas, 67211
 Phone (316) 683-8965
 Fax (316) 684-1441
 www.haarchitects.com

2020
24-7 TRAVEL STORE
 2477 Commerce Rd.
 Goodland, Kansas

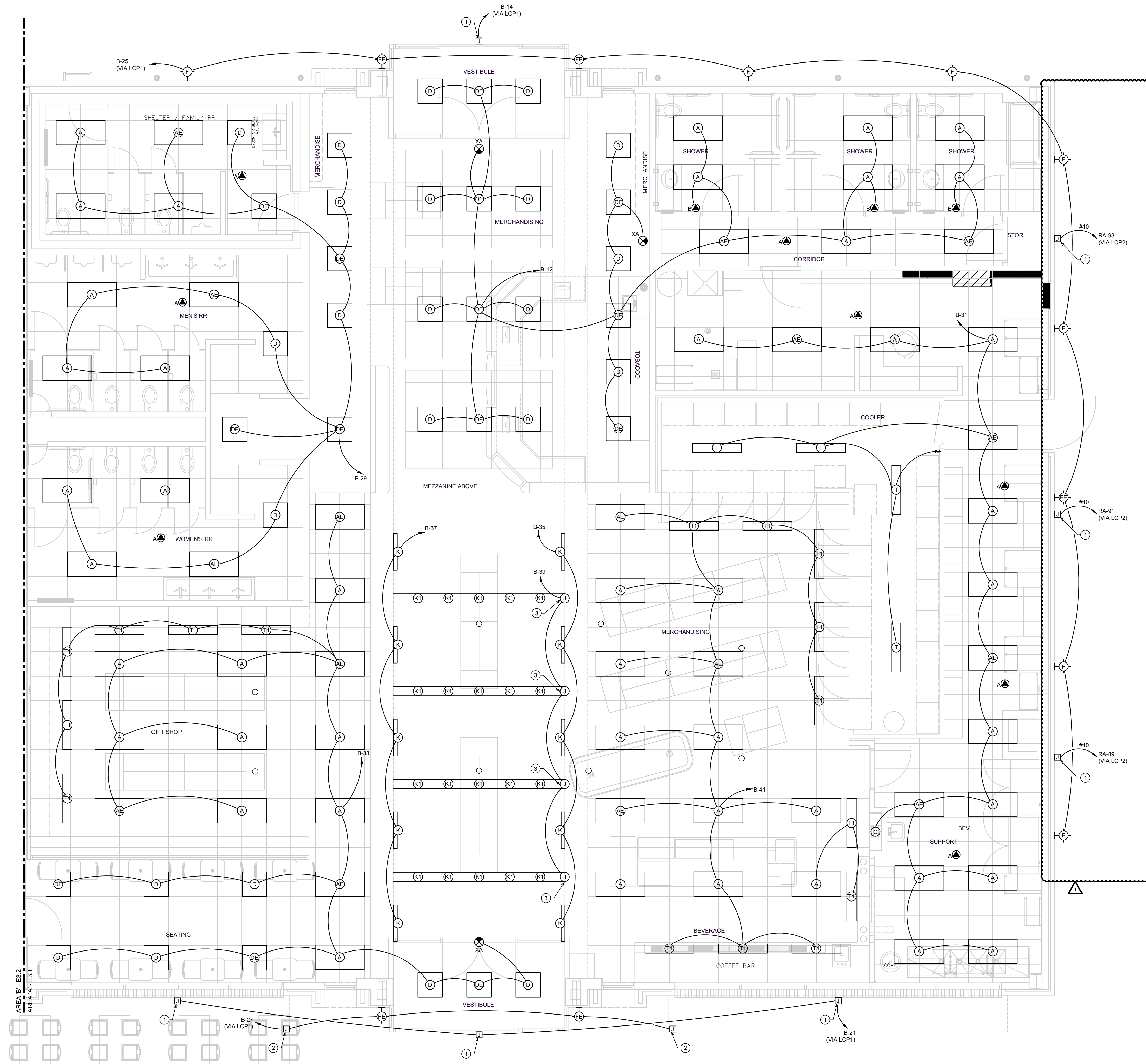
24-7 TRAVEL STORE

DRAWINGS ISSUED		
NO.	DATE	ITEM ISSUED
13	4/15/20	ADDENDUM NO. 2
12	4/09/20	ADDENDUM NO. 1
11	4/01/20	FOR BIDS
10	8/24/20	CHECK SET
9	1/21/20	REVISED PLAN
8	3/20/20	FOR BIDS
7	3/13/20	CHECK SET
6	2/28/20	CHECK SET
5	2/21/20	CHECK SET
4	2/13/20	CHECK SET
3	2/16/20	CHECK SET
2	1/30/20	CHECK SET

COMPUTER DRAWING

DATE: SEPTEMBER 2020
 DRAWN BY: CK
 CHECKED BY: DR

SHEET
E3.1
 OF 1 SHEETS



A FLOOR PLAN - LIGHTING
 SCALE: 1/4" = 1'-0"
 SCALE: 1/4" = 1'-0"

9/15/2020 7:34:42 AM
 M:\2019\19351.01 - 107 - Goodland 24-7 Travel Store Revisions\Electrical\19351.01 - E3.1.dwg