



PAVEMENT MARKING SHALL BE A FAST DRYING, WATER BASED, ACRYLIC RESIN TYPE PAINT CAPABLE OF WITHSTANDING AIR AND ROADWAY TEMPERATURES WITHOUT BLEEDING, STAINING, DISCOLORING, OR DEFORMING AS MANUFACTURED BY SHERWIN WILLIAMS OR EQUAL.

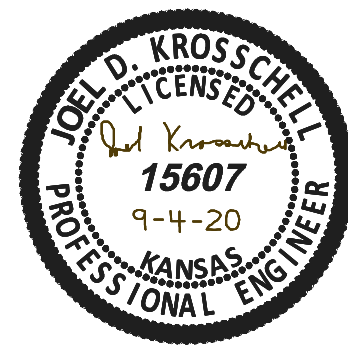
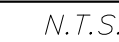
THE PAINTING SHALL BE PERFORMED ONLY WHEN THE SURFACE IS DRY, WHEN THE ATMOSPHERIC TEMPERATURE IS ABOVE 50° F, AND WHEN THE WEATHER IS NOT FOGGY OR WINDY. MARKINGS WILL NOT BE APPLIED WHEN THE PAVEMENT TEMPERATURE IS GREATER THAN 110 F.

IMMEDIATELY BEFORE APPLICATION OF THE PAINT, THE SURFACE SHALL BE DRY AND FREE FROM DIRT, GREASE, OIL, LAITANCE, OR OTHER FOREIGN MATERIAL, WHICH WOULD REDUCE THE BOND BETWEEN THE PAINT AND THE PAVEMENT. THE AREA TO BE PAINTED SHALL BE CLEANED BY SWEEPING AND BLOWING OR BY OTHER METHODS AS REQUIRED TO REMOVE ALL DIRT, LAITANCE, AND LOOSE MATERIALS.

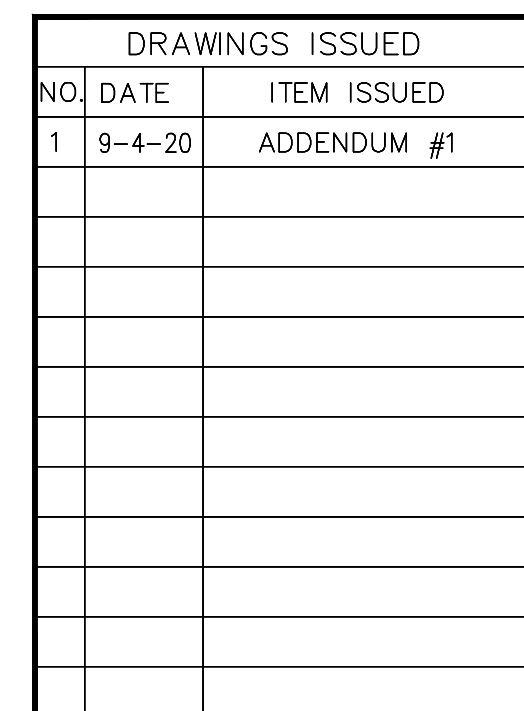
N.T.S

* CONTRACTOR SHALL USE OWNER PROVIDED STENCIL FOR HANDICAP MARKINGS

N.T.S



HANNEY & ASSOCIATES, ARCHITECTS
1726 South Hillside, Wichita, Kansas, 67211
Phone (316) 683-8965
Fax (316) 684-1441
www.haarchitects.com



DATE: AUGUST 2020	
DRAWN BY:	CHECKED BY:

SHEET
C1.7
PAVEMENT MARKING
& SITE DETAILS
OF SHEETS